

Einsleigh Uplands and Wet Tropics pasture photo standards

There are twenty-eight pasture photo standards and corresponding pasture yields for pasture communities in the Einsleigh Uplands and Wet Tropics region. These include:

- Alluvial
- Basalt
- Black speargrass
- Bluegrass, wiregrass
- Buffel grass
- Buffel regrowth
- Downs country
- Eucalypt woodlands
- Eucalyptus box and stylo
- Eucalyptus box
- Indian couch
- Lancewood, bendee, rosewood and spotted gum
- Narrow-leaved ironbark
- Northern Gulf black soils
- Northern Gulf frontage
- Northern Gulf granite
- Northern Gulf range soils
- Northern Gulf red basalt
- Northern Gulf red duplex
- Northern Gulf red earth
- Northern Gulf yellow earth
- Silver-leaved ironbark
- Spinifex desert uplands
- Upper Herbert black basalt
- Upper Herbert frontage
- Upper Herbert red basalt
- Upper Herbert red earth
- Upper Herbert yellow earth.

Alluvial

450 kg/ha



700 kg/ha



950 kg/ha





Alluvial

1940 kg/ha



2560 kg/ha



4250 kg/ha



**Queensland
Government**

Basalt

300 kg/ha



800 kg/ha



1400 kg/ha





Basalt

2000 kg/ha



3000 kg/ha



4000 kg/ha

Black speargrass

250 kg/ha



680 kg/ha



1480 kg/ha



Queensland
Government



Black speargrass

2450 kg/ha



2750 kg/ha



4700 kg/ha



Queensland
Government

Blue grass, wire grass

510 kg/ha



960 kg/ha



1170 kg/ha





**Blue grass,
wire grass**

1750 kg/ha



2710 kg/ha



3840 kg/ha

Buffel regrowth

750 kg/ha



1250 kg/ha



1500 kg/ha



Queensland
Government



Buffel regrowth

1750 kg/ha



2650 kg/ha



3750 kg/ha



Queensland
Government

Buffel grass

400 kg/ha



1050 kg/ha



1650 kg/ha



Queensland
Government



Buffel grass

2850 kg/ha



4750 kg/ha



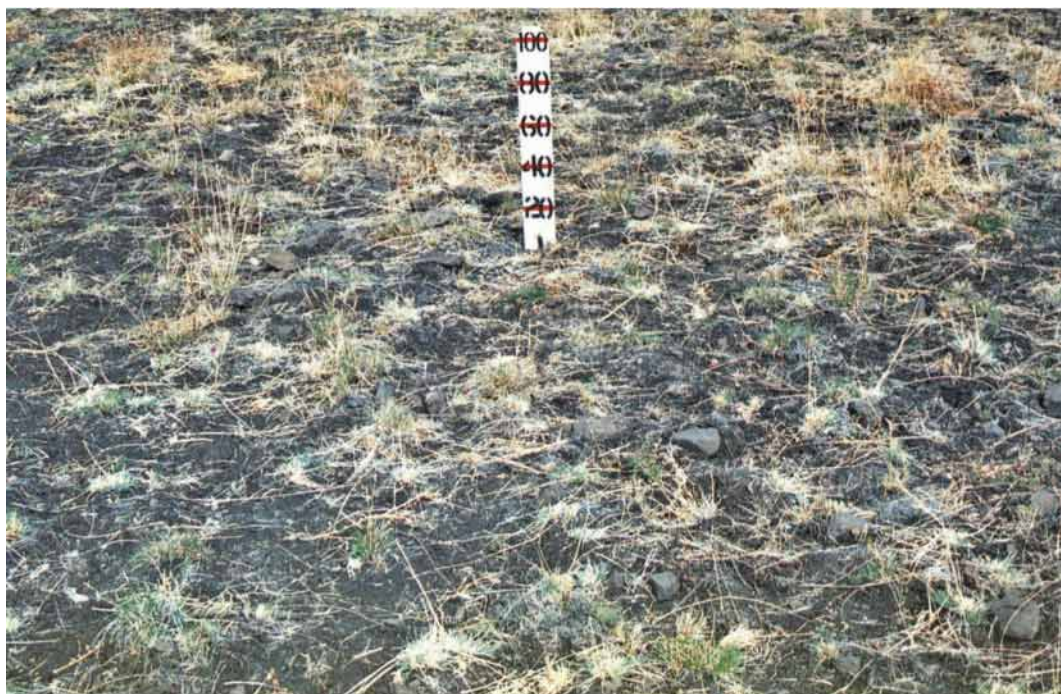
7550 kg/ha



Queensland
Government

Downs country

540 kg/ha



1080 kg/ha



2140 kg/ha



Queensland
Government

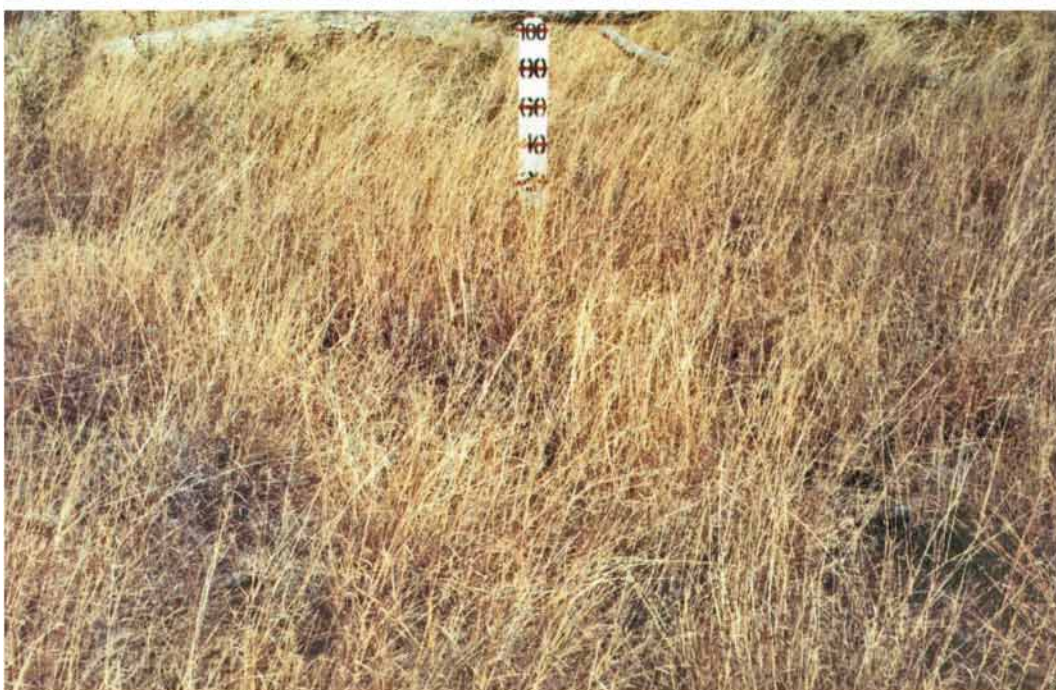


Downs country

3015 kg/ha



3850 kg/ha



5040 kg/ha



Queensland
Government

Eucalypt woodlands

500 kg/ha



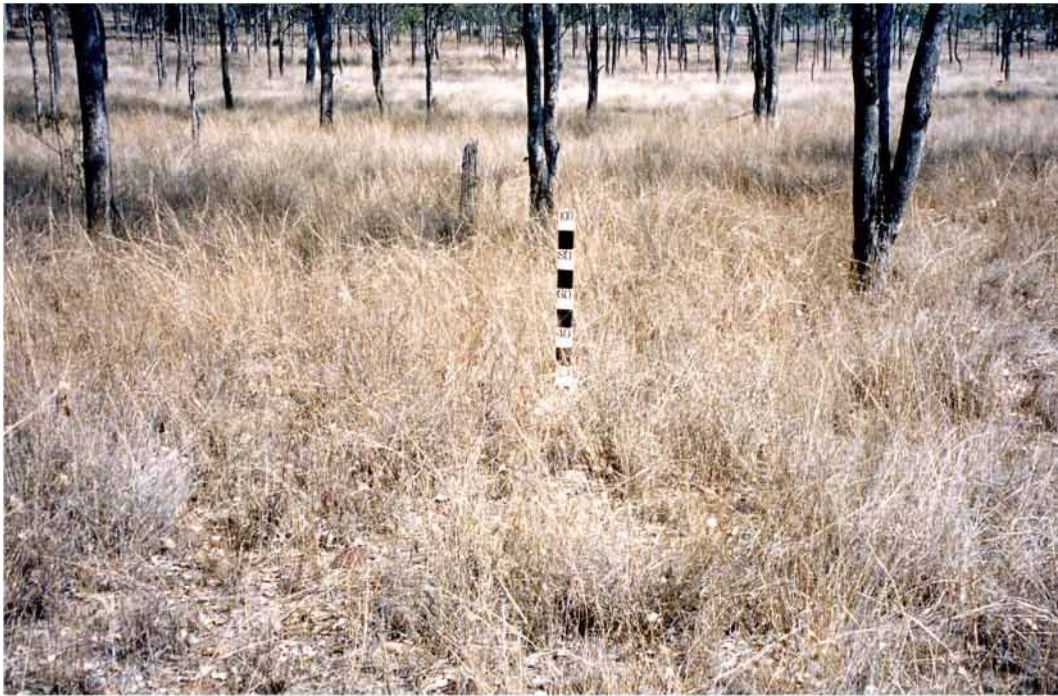
850 kg/ha



1200 kg/ha



Queensland
Government



Eucalypt woodlands

1800 kg/ha



2500 kg/ha



3600 kg/ha



Queensland
Government

Eucalyptus box and stylo

grass 245 kg/ha
stylo 835 kg/ha



grass 500 kg/ha
stylo 150 kg/ha



grass 620 kg/ha
stylo 220kg/ha



Queensland
Government



Eucalyptus box and stylo

**grass 1020 kg/ha
stylo 1200 kg/ha**



**grass 3125 kg/ha
stylo 5 kg/ha**

Eucalyptus box

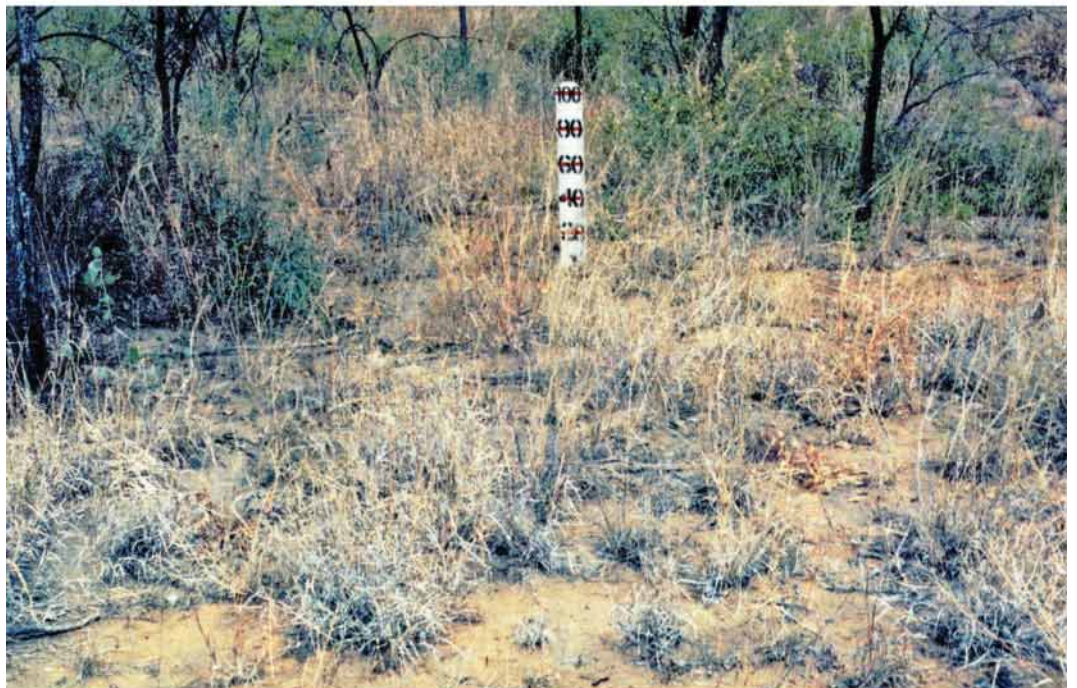
140 kg/ha



500 kg/ha



1020 kg/ha





Eucalyptus box

1230 kg/ha



3000 kg/ha



5490 kg/ha

Indian couch

170 kg/ha



650 kg/ha



1360 kg/ha



Queensland
Government



Indian couch

2450 kg/ha



3500 kg/ha



5750 kg/ha

**Lancewood,
bendee,
rosewood &
spotted
gum**

150 kg/ha



700 kg/ha



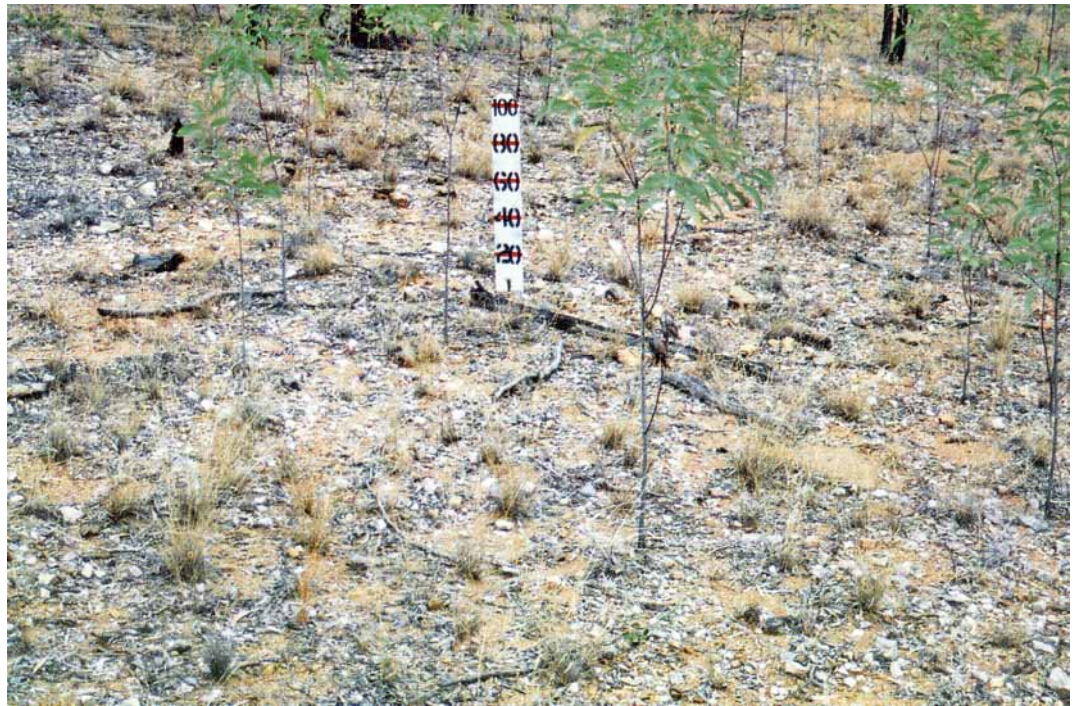
1600 kg/ha



**Queensland
Government**

Narrow leaved ironbark

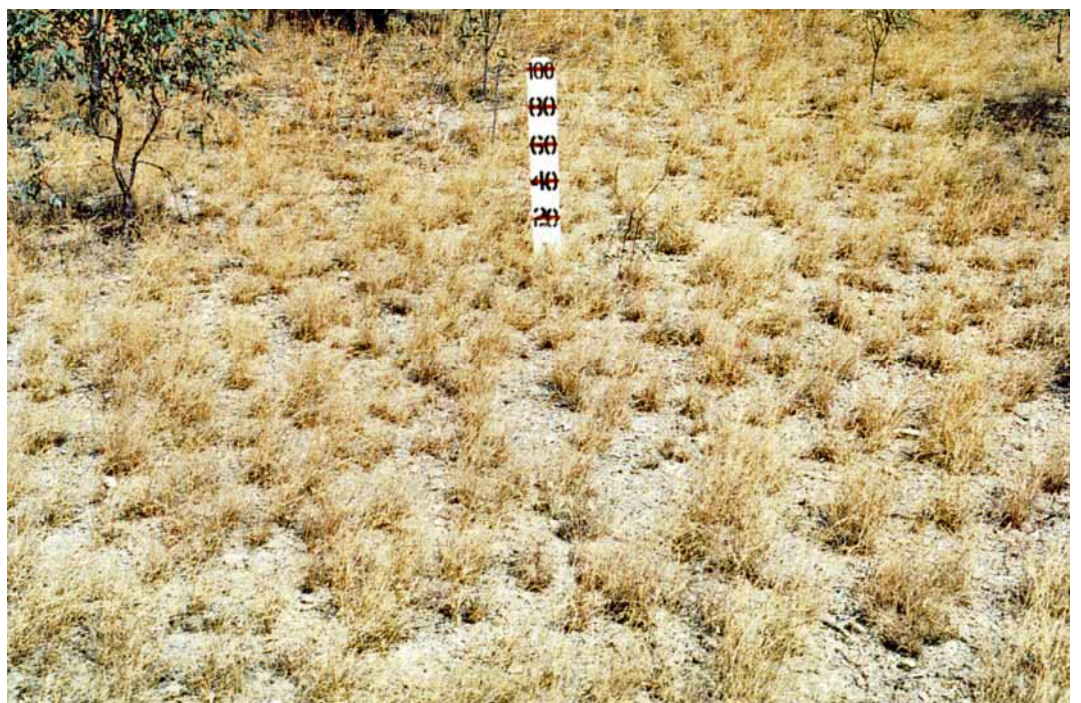
310 kg/ha



720 kg/ha



1200 kg/ha





Narrow leaved ironbark

1750 kg/ha



2250 kg/ha



5000 kg/ha



Queensland
Government

Pasture Yields in the Northern Gulf

Black Soils

3500 kg/ha



2300 kg/ha



1600 kg/ha



Pasture Yields in the Northern Gulf

Black Soils

1000 kg/ha



600 kg/ha



200 kg/ha



Pasture Yields in the Northern Gulf

Frontage

2400 kg/ha



2000 kg/ha



1600 kg/ha



Pasture Yields in the Northern Gulf

Frontage

800 kg/ha



500 kg/ha



250 kg/ha



NORTHERN GULF
RESOURCE
MANAGEMENT GROUP

Pasture Yields in the Northern Gulf

Granite

2000 kg/ha



1700 kg/ha



1200 kg/ha



NORTHERN GULF
RESOURCE
MANAGEMENT GROUP



Queensland Government
Department of Primary Industries and Fisheries

Pasture Yields in the Northern Gulf

Granite

900 kg/ha



600 kg/ha



400 kg/ha



NORTHERN GULF
RESOURCE
MANAGEMENT GROUP



Queensland Government
Department of Primary Industries and Fisheries

Pasture Yields in the Northern Gulf

Range Soils

1500 kg/ha



1100 kg/ha



800 kg/ha



Pasture Yields in the Northern Gulf

Range Soils

650 kg/ha



300 kg/ha



Pasture Yields in the Northern Gulf

Red Basalt

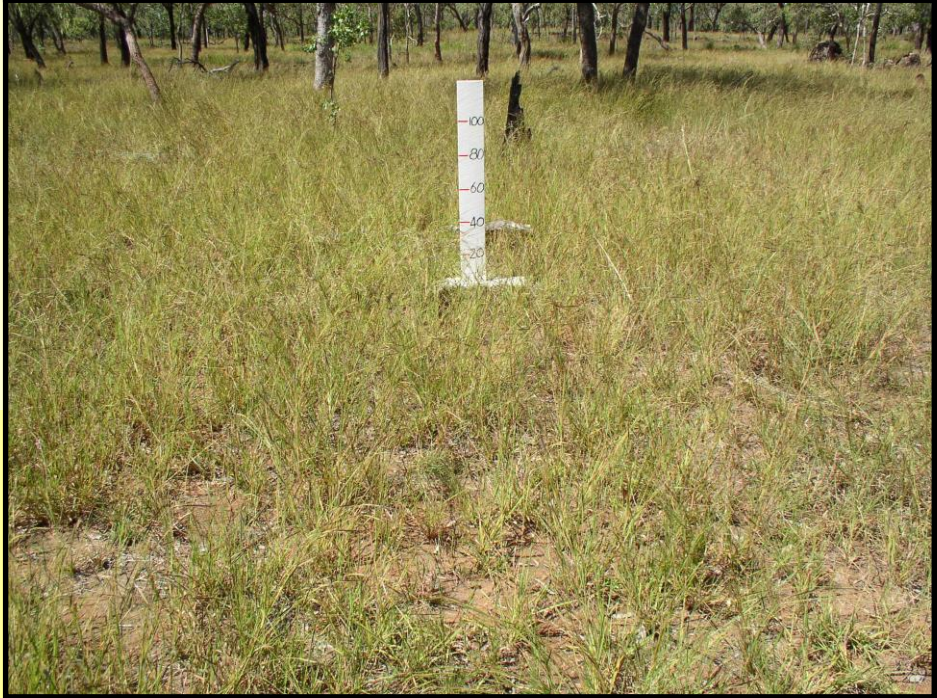
2800 kg/ha



2500 kg/ha



2000 kg/ha



NORTHERN GULF
RESOURCE
MANAGEMENT GROUP

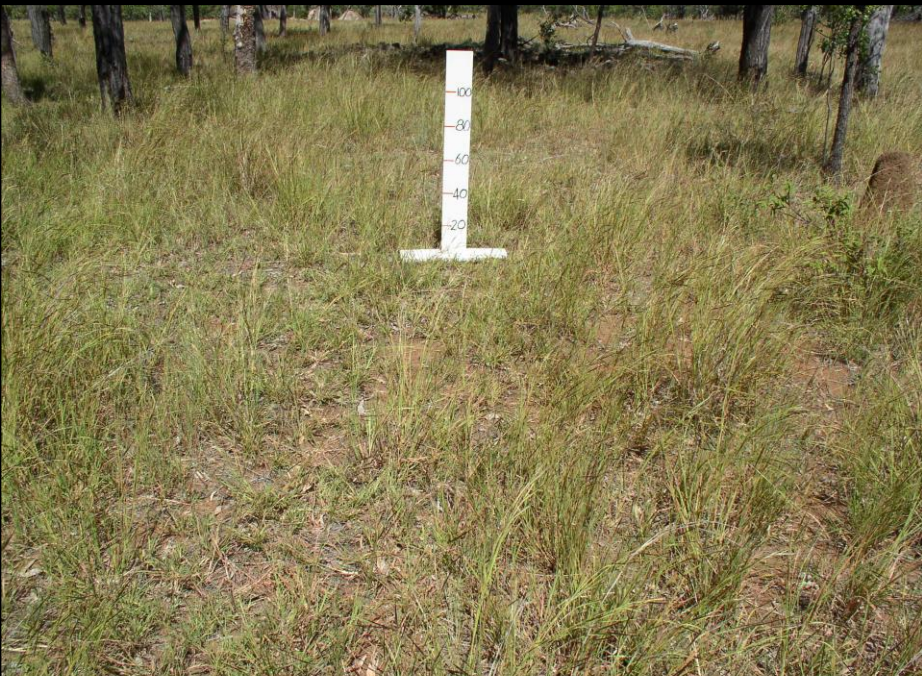


Queensland Government
Department of Primary Industries and Fisheries

Pasture Yields in the Northern Gulf

Red Basalt

1500 kg/ha



1000 kg/ha



600 kg/ha



NORTHERN GULF
RESOURCE
MANAGEMENT GROUP



Queensland Government
Department of Primary Industries and Fisheries

Pasture Yields in the Northern Gulf

Red Duplex

2900 kg/ha



1800 kg/ha



1500 kg/ha



Pasture Yields in the Northern Gulf

Red Duplex

1000 kg/ha



800 kg/ha



500 kg/ha



Pasture Yields in the Northern Gulf

Red Earth

2500 kg/ha



1300 kg/ha



1000 kg/ha

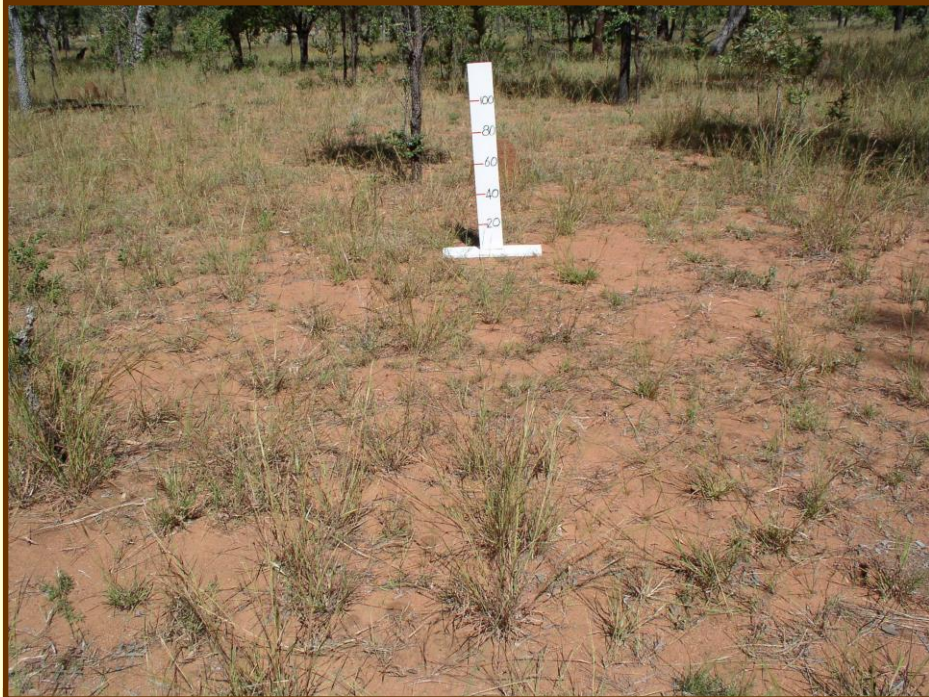


NORTHERN GULF
RESOURCE
MANAGEMENT GROUP

Pasture Yields in the Northern Gulf

Red Earth

600 kg/ha



400 kg/ha



Pasture Yields in the Northern Gulf

Yellow Earth

2200 kg/ha



1600 kg/ha



1300 kg/ha



Pasture Yields in the Northern Gulf

Yellow Earth

1100 kg/ha



600 kg/ha



300 kg/ha



Silver leaved ironbark

250 kg/ha



750 kg/ha



950 kg/ha





Silver leaved ironbark

2040 kg/ha



3300 kg/ha



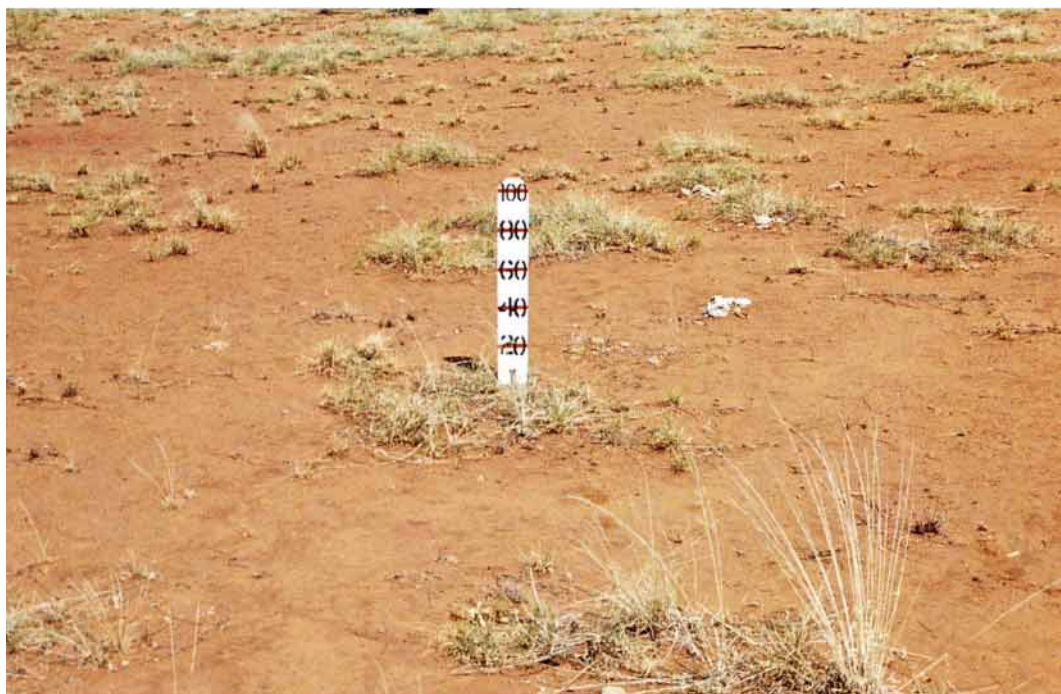
4600 kg/ha



Queensland
Government

Spinifex desert uplands

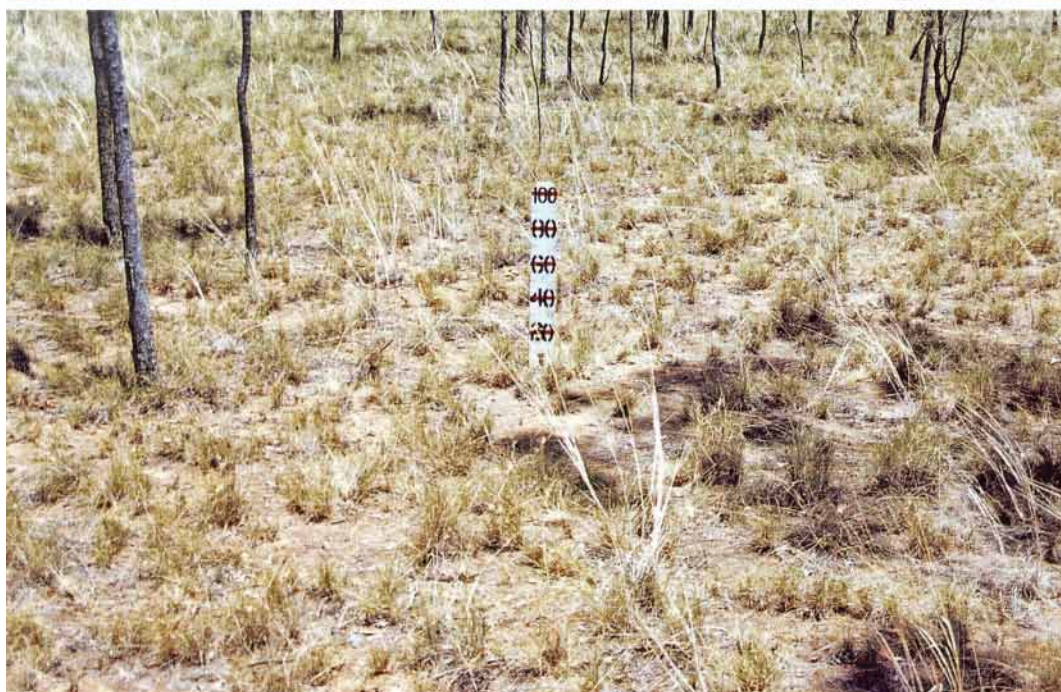
400 kg/ha



850 kg/ha



1400 kg/ha



Queensland
Government



Spinifex desert uplands

2000 kg/ha



3400 kg/ha



7200 kg/ha



Queensland
Government

Upper Herbert Black basalt

200 kg/ha



600 kg/ha



1000 kg/ha



Upper Herbert Black basalt



1800 kg/ha



2300 kg/ha



3500 kg/ha



**Queensland
Government**

Upper Herbert Frontage

250 kg/ha



500 kg/ha



1200 kg/ha



Upper Herbert Frontage



1800 kg/ha



2200 kg/ha



3100 kg/ha



**Queensland
Government**

Upper Herbert Red basalt

600 kg/ha



1000 kg/ha



1500 kg/ha



Upper Herbert Red basalt



1800 kg/ha



2500 kg/ha



2800 kg/ha



**Queensland
Government**

Upper Herbert Red earth

400 kg/ha



600 kg/ha



1000 kg/ha



Upper Herbert Red earth

1500 kg/ha



2300 kg/ha



Upper Herbert Yellow earth

600 kg/ha



1000 kg/ha



1300 kg/ha



Queensland
Government

Upper Herbert Yellow earth



1600 kg/ha



1800 kg/ha



2300 kg/ha



**Queensland
Government**