



V38 (11-12) NOV-DEC 06

alice springs Rural Review

A First for Central Australia

Ellena Hannah, Alice Springs

Central Australia's first GLM workshop was held at Tilmouth Well Roadhouse last week attended by six participants from four local stations.

The workshop delivered principles and tools for improving land condition as well as providing participants with an understanding of the components of the grazing land ecosystem. How these components are managed controls how much pasture grows and how much cattle can eat. Tools included working out Land Type carrying capacities and calculating forage budgets.

Other issues associated with managing a grazing enterprise were covered including the use of fire, pasture improvement and restoration (erosion), weed control and managing the tree grass balance. These topics were discussed within the context of the role they can play in improving land condition, evenness of grazing and diet quality.

The workshop exceeded expectation. The participants enjoyed the experience and found the content very relevant to their property.

Steven Gaff, manager of Napperby Station said, "it gives you science and maths for deciding your future direction. It is not hard, but it really helps you to make better choices."

The group will meet again for a follow up day to report back on progress, reflect on their experience as well as provide an opportunity to revisit the principles presented at the workshop.

The workshop was organised by the NTCA and the Department of Primary Industry, Fisheries and Mines and supported by FarmBis and the National Landcare Program.

For those who missed out on this workshop another is being held in Alice Springs from 11 to 14 March. For more information contact Ellena Hannah on 08 8951 8143 or ellena.hannah@nt.gov.au



ABOVE: Participants measuring how much feed is available



Contents

CAGLM

AA & the
Rangelands
Community

Horticultural
Happenings

WaterSmart
Update

Old Man Plains
Update

RD's Wrap

FramBis Briefs

Pregnancy
Testing School

ASPIAC Meeting

NABRUC

Events Calendar
07

Notices

Market Update

Editor: sally.leigo@nt.gov.au
Publisher: nanet.pagsanjan@nt.gov.au

AA & the Rangelands

Alison Kain, Alice Springs

Community...what do they have in common?

In the last issue of the Rural Review I provided Pastoral Intensification: Benefits and Risks
A fantastic and cohesive session focusing largely on the results of the Pigeonhole Project.

- A system with more inputs will be more susceptible to external drivers eg. markets.
- A less intense system requires less decision making - an important social observation.
- High Pasture Utilisation Rates:
 1. Higher utilisation rates require more uniform grazing distribution & infrastructure.
 2. Implementing high utilisation rates on only a portion of the property means you have some ability to absorb high stock rates if things go wrong.
 3. Weaning rates declined with increased utilisation.
- Most producers cannot afford to run long term 'safe' carrying capacity. Therefore they need to adjust stock numbers seasonally and they need to know their systems very well to do this.
- Studies at Pigeonhole showed very little difference in utilisation rates until a dry year. After the dry year, the higher utilisation rates were never as good as the lower rates, even with good rain. This prompted some discussion about whether to manage for environmental lags (change evident after a long time) or environmental shocks (e.g. drought) concluding that we should aim to have a system that can handle shocks rather than just reacting to shocks.
- Studies from now on will include some form of rotational grazing.
- Animal Behaviour
 1. Where the grazing gradient is >3km, more of the paddock is unused.
 2. Areas with highest pasture yields are often not preferred grazing areas.
 3. Cattle that walk the furthest are likely to have lower performance.
 4. Potential to select cattle based on their ability (or lack of ability) to walk/preference for country could help with achieving evenness of use. The difficulty is in identifying them.

Innovative Rangeland Tools

VegMachine is a monitoring tool that allows pastoralists to view satellite-based long-term cover change maps on

property and extract this information in a graphical format. It was developed and trialled in the NT (VRD) and QLD with pastoralists finding that it takes "the guess work out" of management decisions. Some uses include supporting suspicions that floodout country was declining in cover and stock numbers should be reduced, infrastructure placement and assessment of new grazing management systems. Useful to monitor parts of the property that are hard to reach.

Precision management systems such as remote telemetry, automatic weighing and drafting facilities and pasture growth models such as GRASP are helping pastoralists on-ground. These tools convert uncertainty (which is unmanageable) into risk (which is manageable). One pastoralist spoke about using GRASP predictively and linking this to animal performance to forecast animal production this would be a very exciting tool! Other examples were using NLIS to help with mothering and drafting of feral animals.

Desertification and Ecological Legacy

The key speaker was Philip Young, who spoke about desertification in China's rangelands. The following two speakers were from W.A. This was a very sobering session.

- Desertification and land degradation is no longer a scientific issue, we know it is happening. We need a much greater focus on policy, social issues and governance.
- INSTITUTIONAL FAILURE institutions have turned their backs on the problems of desertification.
- Pastoralists need to demand more accountability because those who are doing a good job are being degraded by those who aren't.

In summary there were two strong messages:



We must consider the implications of peak oil and climate change in every single project that we do.



And the message from Alcoholics Anonymous? We need to admit our problems (e.g. land degradation, poor communication), without any blame, and then we will be on the road to recovery! Simple, but very true.

Horticultural Happenings

Dave Maynard, Alice Springs



Table grape harvest in full swing

The local table grape harvest has been in full swing over the past couple of weeks and the outcome is looking sound as we approach the mid point of the harvest. Grape farms in the Ti Tree region have reported average to above average yields from healthy vines which are meeting expectations.

Some growers have reported patchiness in the crop particularly where nematodes are present. In recent years the industry in the area has been removing vines affected by nematodes in the soil and replacing

these with nematode tolerant rootstocks. As these vines further mature the industry can expect increases in yields in the years to come.

Local Alice Springs producer Rocky Hill Table Grapes is currently picking their largest crop since diversifying to Table Grapes and is reporting good quality fruit on their vines.

Demand and prices for the Central Australian produce have been lower than expected due to influences from the Queensland industry. Fruit is still being supplied from farms in the Emerald region and Mundubberah is just beginning to ramp up their supply to the market. Even so Territory Grapes manager Andrew O'Bree says "Prices are holding steady".

The harvest is expected to be completed by mid December.

Launch of Aputula Hort Block

Official opening of horticulture block at Aputula Wednesday the 8th of November saw the official opening of the horticultural plot at the community of Aputula (Finke). The 2ha plot which is comprised of around 50 per cent table grapes and 50 per cent vegetables and melons is being developed by residents of the community under a training program implemented by Geoff Miers (Geoff Miers Garden Solutions) and Arthur Dahlenburg (Outback Hort Services NT) and is being funded by DEET. Over 20 people made the trek down to Aputula to join community members in celebrating the success of the trainees and others who have been involved in the development of the plot over 2006. Thirty-nine people received Certificates of Participation and 11 indigenous trainees graduated with their Certificate 1 in Horticulture. Five more trainees will be graduating next week.

Local Member Alison Anderson formally opened the block and presented the certificates to the trainees. Certificates of Participation were awarded to those involved in the development of the Women's Centre nursery and garden. Following the opening ceremony and presentations guests were invited to the Women's Centre for a tour of the nursery and garden. The women recently held their first sale of the plants they had propagated in the nursery making over \$100 purely from the local community. To cap off the day, guests and participants were treated to a fantastic spread of food and drinks that were prepared by the women who have been conducting training in food preparation. With the horticultural plot a success there should be no end of fresh produce for the women to put to good use.



Pastoral Production update

After a great response from landholders across the three regions, the WaterSmart™ selection committee has chosen the following properties to test and demonstrate water reticulation, delivery and monitoring equipment allowing landholders to see technology in operation and demonstrate cost effective ways to utilise water as a property-wide management tool, providing better production and sustainable outcomes.

The North Australian Pastoral Company's Monkira Station is located in western Queensland's channel country. The 373,000 hectare grower property for weaner steers is dominated by the mighty flood plains of the Diamantina River, which produce highly productive pastures of blue bush and native sorghum. Monkira offers opportunities to look at technologies addressing evaporation, renewable energy and remote monitoring of water points cut off during the wet.

In Central Australia, De Rose Hill Station has been selected to represent the WaterSmart™ Project. Located 50km south of the Northern Territory/South Australian border on the Stuart Highway, the property runs agistment and Black Angus cattle. The Fuller family plans to increase their numbers of solar bores using solar powered submersibles to pump water to remote hilltop tanks and gravity feed to new water points. This system will be remotely monitored and controlled using a telemetry system.

Len & Joy Newton's Mt Ive Station has been named as the demonstration site in the Gawler Ranges of South Australia. Mt Ive is an 85,250 hectare, wool growing property with saltbush flats that borders Lake Gardiner in the North. This property offers a broad view of the regional water issues facing landholders

in the Gawler Ranges. Equipment installation will include remote monitoring, renewable energy, reticulation systems and new watering point locations.

Discussion and problem solving with other landholders and suppliers around the country through our on-line interactive forum is one of the many benefits of the newly activated WaterSmart™ webpage. The webpage is located on the Desert Knowledge CRC Website and offers guidance on reticulation systems design, pipe and valve information, control and monitoring systems and water point location planning. Information related to on-ground experiences and equipment in field trials, latest technologies, costs and benefits, field days, manufacturers, suppliers, funding and subsidies available and industry links.

The WaterSmart™ Webpage can be accessed at <http://www.desertknowledgecrc.com.au/research/waterSMART>. For further information on the project please contact Desert Knowledge CRC Project officer: QLD & SA - Colleen James ph: 07 4652 7826 or email: colleen.james@dcq.org.au Central Australia Adrian James ph: 08 8951 8155 or email: adrian.james@nt.gov.au

This is a DK CRC Project, funded by NLP, administered by the DAFF. Project partners are: Desert Channels Queensland Inc. (DCQ), the South Australian Arid Lands Natural Resource Management Board (SAAL NRM) and DPIFM.

WaterSmart™
pastoral
production



Old Man Plains update

Alison Kain, Sally Leigo & Peter Saville, Alice Springs

The Central Australian Grazing Strategies Partnership

Fencing for the four paddock rotation and the continuously grazed control paddock is complete and cattle have entered the trial. More appropriate watering point locations will be constructed in the near future to ensure that cattle can readily access available feed. A big thank you to the Station support staff, Bryan Gill, prisoners and staff from the Correctional Services.

Calibrating GRASP the Swiftsynd study

Six Swiftsynd harvests have been completed for the calcareous shrubby grassland (limestone) land type. These data document the soil moisture levels, rainfall, pasture growth, nutrient uptake and defoliation for four pasture growth events and will enable calibration of the pasture growth model GRASP for this land type early next year. Those of you who have participated in the GLM workshop will understand how useful this model can be for determining carrying capacities. Plans are under way to calibrate other land types on OMPRS and hopefully on a few other stations as well. Call Alison Kain on 8951 8184 if you would like Swiftsynd studies undertaken on your property.

LNT Cost/Benefit Study

LNT produce phosphorus supplementation for the extensive beef industry. They are keen to partner DPIFM in a future study investigating the costs and benefits of phosphorus supplementation on Old Man Plains. This project would be undertaken on the mulga and woollybutt sand plain country and given that everyone has a few square kilometres of this marginal country it will provide useful information to the whole of industry.

Remote Telemetry Studies with Adelaide Uni

Adelaide University have a range of on ground demonstration and technology evaluation projects throughout the agricultural industry. Early conversations have highlighted potential projects on Old Man Plains such as walk over weighing through

the use of telemetry. These projects would be largely focussed on promoting confidence in the technology for central Australian pastoralists. Remote telemetry has the potential to help you meet the pressures of high labour costs and rising fuel costs.

Impact of Weaning on Weight Gain

Observation of the 2006 AZRI weaners found that on average they lost 7kg within the first couple of days of yard weaning. Producers have noticed that it takes some time for weaners to regain their soft look prior to weaning. An application will be lodged with MLA's Producer Demonstration Sites program to fund this project. It is hoped to trial four management strategies in March 2008 to minimise the amount of weight that is lost during weaning. As a result of this trial a management strategy would be demonstrated to the industry that is practical, economical and efficient.

Performance Recording of the DPIFM Breeder Herd

At OMPRS we have been doing a lot of weighing, pregnancy testing and condition scoring. We aim to get data on our breeder herd is performing. We want to identify our gold star cows that calve every year and determine which cows are producing our best performing steers. From this we are also starting to get a more realistic measure on our mortality rates, conception rates, pregnancy rates and weaning percentage. The outcome will be a high performing and efficient breeder herd. We hope to share this information with the Droughtmaster Society to help develop the Estimated Breeding Values of the breed's seed stock.

Flight times - Breeding cool temperaments to make cold, hard cash!

One of the key messages that came out of the Meat Profit Day for OMPRS Management was the importance of having cattle with good temperament. We aim to purchase a flight time recording machine that we can use in our research trials but also to assist in identifying the breeders with good temperament to breed from.



Regional Directors Wrap



Looking back at a year's events invariably leads to the conclusion that we are all influenced by major and unpredictable events. So what was surprising about 2006?

The increasing intensity of drought at a national level is a standout influence on the pastoral industry. At a direct local level the Alice Springs region now has 12 properties declared severely droughted, mostly in the south east. The effects of drought interstate on availability of agistment and demand for cattle for growing out, feedlotting and slaughter is a significant change from recent years of buoyant domestic prices. Now prices offered for live export through Darwin are relatively more attractive.

A wider effect of national drought has been the increasing focus on water and competition for its use. Nationally the debate is increasingly about revaluing water. At a regional level, being able to demonstrate sustainable management of water resources is increasingly important. Industry and government input into the Ti Tree Water Advisory Committee is an example of this process. Meanwhile the waste water from Alice Springs is being converted from a liability to an asset by storing it underground at the Arid Zone Research Institute for reuse.

Another stand out change this year was the significant increase in costs of oil. Energy is like water in being increasingly part of national and local considerations. A focus on increasing costs at the property level probably explains more take up of the Commonwealth Renewable Energy Project which is locally administered by the department.



A glance over this year's editions of the Rural Review indicates that DPIFM is working with industry and stakeholders to enable sustainable development. In doing so the aim is to look forward and use appropriate methods to manage risk, i.e., both old and true as well as new and state of the art. For example, the teams which worked in assessing drought utilised outputs from the National Agricultural Monitoring System, ensuring a high level of credibility.

The myriad of regional pastoral initiatives include the 21st Century Pastoralism and Water Smart Projects in the DK-CRC, the Central Australian Grazing Partnerships Project, GLM Workshops, Meat and Livestock Australia's Edge Network Workshops, NT wide Heifer Performance project and grass books. The well attended Meat Profit Day provided knowledge on important strategic issues facing the pastoral industry.

The Indigenous Pastoral Program showed that its initial three years was successful with significant cattle on indigenous land, increases in indigenous employment and effective cooperation by the partners in the Central and Northern Land Councils, Indigenous Land Corporation and NT Government. New partners in the next five year contract include the NTCA and the Commonwealth's Department of Workplace Relations.

DPIFM staff look forward to continuing to work with many stakeholders and partners.

*Compliments
of the Season*
(and bring on the rain)

- Phil Anning

FarmBis Briefs

Ian McLean, FarmBis Alice Springs

2006 has absolutely flown past us! Looking back it was quite a busy year for FarmBis.

My transition into a new position within the Northern Territory Cattlemen's Association and the continuation of the FarmBis position was a very positive change and one that I am enjoying.

Training events throughout the year included further successful Nutrition EDGE and Grazing For Profit courses, the inaugural Central Australian Grazing Land Management Workshop. Feedback from attendees was very positive; attendees went home motivated and equipped to improve the performance of their business.

The Meat Profit Day held in September was well received by the 200 plus people who attended. The efforts of the committee should be noted in making the event locally relevant. The committee included: Anne Kilgariff, Roy Chisholm, Paula Kilgariff, Ben Hayes, Stuart Kenny, Peter Saville, Mark Ashley, Nanet Pagsanjan and Jillian Fisher. A special mention should be given to the Chairman Chris Nott who put a huge amount of time and effort into the event.

Thank you to those who supported courses and events throughout the year. There are already a

number of events planned for next year, a calendar of which will soon be made available on the NTCA web site. A Nutrition EDGE workshop has been scheduled for February 14 to 16. Following this will be a one-day follow-up for past participants, refreshing the content of the workshop and addressing technical issues and questions past participants may have.

A Grazing For Profit will be held from March 14 - 21 in Alice Springs, a KIT (Keep In Touch) day will be held on March 22 for past Grazing For Profit graduates.

As detailed in Ellena's article "GLM is Good!!" on page 1 Central Australian Grazing Land Management workshops will be held throughout the year with the first being held on March 11-14.

Other courses planned but without confirmed dates are:

- Jabiru Management Skills Development Course, possibly in May.
- Stock Handling School, possibly around show time
- Breeding EDGE, possibly August

Please contact me with any queries on planned courses or suggestions for any others; also keep an eye out on the NTCA website for the training calendar.

Merry Christmas to you all and I look forward to working with you again next year.

Pregnancy Testing School

Bryan Gill, Alice Springs

A Pregnancy Testing School has just been completed, hosted by The Garden Station. The school was taught by Brian Heim and is accredited through the Katherine Rural Campus. Participants came The Garden, Mount Riddock, Waite River, Yambah and De Rose Hill Stations took part in the two and a half day school.

The school involved both the theory and practical skills of pregnancy testing. Those attending also had to undertake a short exam at the end of the school.

All participants at this school were able to differentiate between pregnant and non-pregnant animals and with more practice could go on to be accredited to do their own animals for sale.

There was a lot of interest in this school and DPIFM is intending to organise another two schools in April 2007.



Above: Andy Hayes putting the theory to the test.

The schools are limited to six seven participants, so if you are keen to learn this skill you will need to register an expression of interest as soon as possible.

Properties are also needed to host the school and 150 to 200 breeders will be required for pregnancy testing.

Please Contact Bryan Gill 8951 8127 or Sally Leigo 8951 8144

ASPIAC meeting notes

Paul Smith, Sally Leigo & Peter Saville

The 67th ASPIAC Meeting was in what was a very packed agenda for mega-meeting day. There was good attendance from the committee and other pastoralists who had a couple of hours to sit in on the meeting.

For those who are not sure what ASPIAC does here are some things we achieved on the day:

- We had four presentations from DPIFM project officers on the Mt Riddock Herd Health and Performance, GLM, Swiftsynd project and 21st century pastoralism projects. The committee recommended that the FINAL report of the Mt Riddock Herd health and performance project be published over summer and be made available to all pastoralists as soon as possible so keep an eye out in your mailbag!
- The committee also raised strong concerns over the reduction in the number of staff involved in extension in Alice Springs. A letter is to be drafted to the NTCA to get them involved in finding a solution to improving the extension service in the Alice Springs region.
- With the Northern Territory Government questioning the value of research stations in association with the NTCA a letter will be drafted describing how the Alice Springs Pastoral Industry will stand to benefit from the projects being implemented on OMPRS.
- Paul Smith as Chair of ASPIAC was also able to fulfil some official duties by launching the Sample

Preparation Room located at AZRI.

This Prep Room will be useful to the central Australian region's pastoralists. It will reduce turn around times for results of the more basic testing as they can now be carried out locally.

This will mean faster results - instead of the usual six to seven days in some instances it can mean a wait of just two days.

It is important to note that the Prep Room will not take over the more complex testing Berrimah Farm carries out for Alice Springs.

It was a pretty full on day and we have a few actions to sort out before our next meeting. Thank you to all involved for your contribution to the committee this year and fingers crossed for a very wet 2007!! If you have any further questions or would like to raise any concerns please feel free to contact any of the following people:

- Paul Smith (Chairman), Teyon Station
- Dick Cadzow (NTCA Representative), Mt Riddock Station
- Chris Nott (NABRC Delegate), Alcoota Station
- Lance Cramer, Templebar Station
- Jamie Evans, Hamilton Downs Station
- Tracey Hayes, Deepwell Station
- Anne Kilgariff, Lyndavale Station
- Natalie Turner, CLMA
- Phil Anning, Sally Leigo (Secretary), Peter Saville, DPIFM



LEFT: Paul Smith doing the honours

ABOVE: The ASPIAC Committee at the launch



The North Australia Beef Research Council presents

Northern Beef Research Update Conference

Townsville

19, 20, 21 and 22 March 2007

Attention Beef Industry researchers, extension officers and producers

Get the latest technical information from some of Australia's best researchers in the areas of genetics and genomics, reproduction and breeder management, sustainable grazing, animal welfare and ruminant nutrition.

Monday 19 March – Registration and pre-dinner welcome reception.

Tuesday 20 March – Choose one of the field visits to inspect research activities at Swans' Lagoon Research Station, south-west of Ayr or Wambiana Grazing Project, south of Charters Towers.

Wednesday, 21 and Thursday 22 March

Southbank Convention Centre, Townsville – Technical presentations by researchers; Producer presentations "Profit drivers for the northern beef industry"; Conference Dinner.

Confirmed Sponsors:



Visit our Website www.nbruc.org.au for full program, accommodation and registration information or contact
Jackie Kyte – 07 5480 4412 or 0409 564 729; jackie.kyte@dpi.qld.gov.au
Janine Palmer - 07 5547 0774 or 0419 735 542; justkall@iinet.net.au

www.nbruc.org.au

Events Calendar 2007

DATE	EVENT	LOCATION	CONTACT
JANUARY			
FEBRUARY			
TBC	Nutrition EDGE	Alice Springs	Ian McLean 8952 5122 or Sally Leigo 8951 8144
TBC	Nutrition EDGE	Barkly	Ian McLean 8952 5122 or Andy Bubb 8962 4492
MARCH			
5-9	ASSOA In-School week	Alice Springs	
11 - 14	Grazing Land Management	Alice Springs	Ellena Hannah 8951 8143
14 – 21	Grazing for Profit	Alice Springs	Ian McLean 8952 5122 or RCS 07 4939 5255
29	Beef Up Forum	Katherine	MLA
30	NTCA Conference & AGM	Katherine	NTCA 8952 5122
APRIL			
6-9	EASTER		
16 – 22	Preg Testing School		Sally Leigo 8951 8144
MAY			
7	May Day Public Holiday	NT	
7	Beef Up Forum	Barkly	MLA
21-24	ASSOA In-School week	Alice Springs	
TBC	Grazing Land Management	Central Australia	Ellena Hannah 8951 8143
TBC	Grazing Land Management Follow Up day	Central Australia	Ellena Hannah 8951 8143
JUNE			
JULY			
TBC	Breeding EDGE	Barkly	
TBC	Breeding EDGE	Alice Springs	
AUGUST			
6	Picnic Day Public Holiday	NT	
SEPTEMBER			
24-27	ASSOA In-School week	Alice Springs	
OCTOBER			
NOVEMBER			
TBC	Grazing Land Management	Central Australia	Ellena Hannah 8951 8143
TBC	Grazing Land Management Follow Up day	Central Australia	Ellena Hannah 8951 8143
DECEMBER			
10-13	ASSOA In-School week	Alice Springs	

Drought Applications - Start taking photos!

Alison Kain, Alice Springs

As we head into summer it is timely to talk about drought applications. If you are going to lodge a drought application at the end of summer then you need to start preparing for it now.

Last year, some areas had a pasture growth event in October 2005. It was impossible for Drought Inspectors to accurately assess the extent of this pasture growth event when property inspections were made in May 2006. In some instances, holding paddocks and areas distant from water indicated that a good pasture growth event had

occurred however this was not assessable in grazed areas.

Should you receive pasture growth events this summer it would greatly enhance the accurate assessment of your application if you include photographic evidence of the extent of pasture growth. Good locations for photos include existing monitoring sites or other relocatable sites. Make sure photos document the productive parts of the landscape (drainage areas, alluvial plains, depressions, under trees) not just the rocky crests that don't ever grow much.

GET AMONGST IT!

Ensure you are operating for production and land condition outcomes.

CENTRAL AUSTRALIA GRAZING LAND MANAGEMENT WORKSHOP

Start: 6pm Sunday March 11th, 2007
Finish: 4pm Wednesday March 14 2007
Where: Alice Springs
Cost: \$2500 less 80% FarmBis subsidy
(rate is reduced for subsequent participants from the same business)
Contact: Ellena Hannah, Central Australia
Grazing Land Management
Officer 08 8951 8143

New Technote

**Water Medication Systems:
Checks for installation and
maintenance. Written by J
Coventry & K Hill 2006**

Available online at DPIFM's
website: www.nt.gov.au/dpifm

To our
ASRR
readers



Wishing you a very

**Merry
Christmas**

*and a wet and
prosperous*

New Year!




Pastoral Market Update

OTHER LIVESTOCK EXPORTS VIA DARWIN PORT (includes NT and Interstate Stock)

Destination	Buffalo			Camels			Goats			Deer			Horses			Sheep			Pigs		
	2005	2006	1-31 OCT	2005	2006	1-31 OCT	2005	2006	1-31 OCT	2005	2006	1-31 OCT	2005	2006	1-31 OCT	2005	2006	1-31 OCT	2005	2006	1-31 OCT
BRUNEI	816	230	60	34	0	0	1,097	741	275	0	0	0	0	0	0	0	0	0	0	0	0
INDONESIA	100	674	200	0	0	0	10	57	0	0	0	0	9	0	9	0	0	0	0	0	0
PHILIPPINES	0	0	0	0	0	0	0	0	0	0	0	0	0	0	0	0	0	0	450	0	0
W-MALAYSIA	672	5,430	730	0	343	208	0	3,702	0	0	0	0	0	0	0	0	781	0	0	0	0
SABAH	314	621	621	0	0	0	3,016	681	594	0	0	0	18	0	0	0	0	0	0	0	0
TOTAL	1,902	6,955	1,611	34	343	208	4,113	5,181	869	0	0	0	27	0	0	0	781	0	450	445	0

NATIONAL CATTLE PRICES - W/E 20/10/06

JAPAN OX									MEDIUM STEER										
Estimated dressed weight price (cents/kg)									Estimated dressed weight price (cents/kg)										
SALEYARDS				O.T.HOOKS					SALEYARDS				O.T.HOOKS						
NSW	QLD	SA	AV (Aust)	NSW	QLD	SA	AV (Aust)	NSW	QLD	SA	AV (Aust)	NSW	QLD	SA	AV (Aust)	NSW	QLD	SA	AV (Aust)
This week	318	323	246	310	303	321	nq	303	This week	282	307	317	256	302	308	Nq	303		
Last week	319	325	269	305	311	325	303	308	Last week	301	307	296	272	309	311	301	303		
Year ago	350	331	331	335	310	330	348	333	Year ago	352	351	357	332	317	344	344	332		
US COW									TRADE STEER										
Estimated dressed weight price (cents/kg)									Estimated dressed weight price (cents/kg)										
SALEYARDS				O.T.HOOKS					SALEYARDS				O.T.HOOKS						
NSW	QLD	SA	AV (Aust)	NSW	QLD	SA	AV (Aust)	NSW	QLD	SA	AV (Aust)	NSW	QLD	SA	AV (Aust)	NSW	QLD	SA	AV (Aust)
This week	214	233	156	205	240	228	nq	216	This week	294	304	256	289	305	289	nq	315		
Last week	257	265	173	231	258	269	239	240	Last week	318	316	271	302	319	299	310	324		
Year ago	308	287	304	395	271	293	273	264	Year ago	402	377	390	391	337	319	343	353		
LIVE EXPORT QUOTES									<p>Prices courtesy of Meat & Livestock Australia</p>  <p>www.mla.com.au</p>										
Estimated live weight price (cents/kg)																			
LIGHT STEERS (280-400 kg)				HEAVY STEERS (400+ kg)															
Darwin		Fremantle		Darwin		Fremantle													
This week	nq	nq	nq	nq	nq	nq	nq	nq											
Last week	190	nq	170	nq															
Year ago	165	nq	155	nq															

CURRENCY EXCHANGE RATES

Key Currencies 1AUD =	Current 27.10.2006	Previous month 1.10.2006	3 months ago 1.8.2006	1 Year ago 1.11.2005	Pre-devaluation 01.07.1997
Brunei Dollar	1.21102	1.9841	1.19442	1.28924	1.076
Indonesian Rupiah	6,976.94	6,881.29	6,952.10	7,852.38	1830
Philippine Peso	38.13367	37.59232	39.31115	42.69084	19.84
Malaysian Ringgit	2.80995	2.75680	2.71388	2.87820	1.9
Euro	0.60305	0.58913	0.58154	0.63132	N/A
US Dollar	0.76258	0.74662	0.74457	0.76030	0.752

Prepared by the NT Department of Primary Industry, Fisheries and Mines

This publication contains commodity market information prepared for DPIFM staff use in strategic research and extension planning. While DPIFM exercise care in the compilation and preparation of this information, no responsibility is taken for its accuracy or for the completeness of any information that is reproduced from other sources. DPIFM denies any loss or damage to any person whether caused directly or indirectly by the use of any of the information provided.

Pastoral Market Update

Live Cattle Exports via Darwin Port – **NOVEMBER 2006**

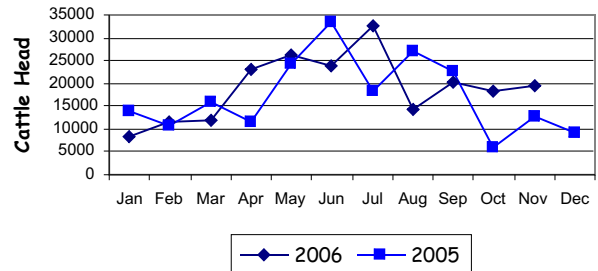
Please note that the "NT CATTLE" figures are NT cattle exported through the Port of Darwin only, some NT cattle are exported through interstate ports.

Destination	TOTAL CATTLE (including interstate)							# NT CATTLE						
	2004	2005	Last year 30/11/05	YTD 30/11/06	1-30 NOV	Previous Month	Difference	2004	2005	Last year 30/11/05	YTD 30/11/06	1-30 NOV	Previous Month	Difference
BRUNEI	14,101	6,642	5,208	6,517	936	706	+230	10,492	6,462	5,028	6,517	936	706	+230
INDONESIA	158,600	186,031	178,369	173,761	14,101	12,452	+1,649	150,048	184,767	177,105	171,883	14,101	12,452	+1,169
PHILIPPINES	31,623	13,052	13,052	10,071	0	0	0	29,393	12,438	12,438	10,071	0	0	0
SABAH	304	1,905	1,905	5,758	2,484	1,133	+1,351	304	1,905	1,905	4,944	2,484	1,133	+1,133
SARAWAK	320	04,893	4,893	1,883	0	0	0	0	4,893	4,893	1,883	0	0	0
W-MALAYSIA	6,379	93	93	12,412	2,113	4,095	-1,982	6,272	93	93	10,583	1,172	4,095	-2,923
EAST TIMOR	35	0	0	0	0	0	0	0	0	0	0	0	0	0
TOTAL	211,362	212,616	203,520	210,402	19,634	18,386	+1,248	196,509	210,558	201,462	205,881	18,693	18,386	-307
				+6,882							+4,419			

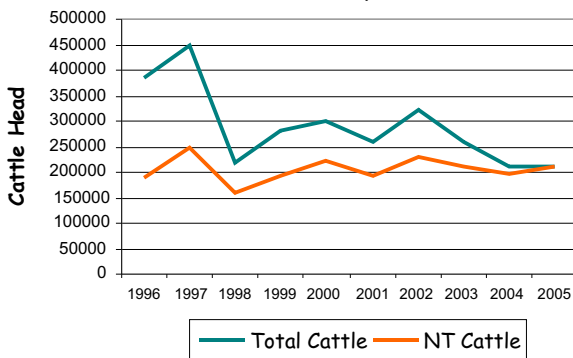
NOVEMBER at a glance

- 19,634 head of cattle through the Port of Darwin during November, 1,248 head more than October and 6,880 more than November last year.
- YTD figures indicate 6,882 head more than the same time last year.
- 576 buffalo and 6,309 goats were exported.
- 941 breeder cattle from Vic & Qld were exported to Malaysia.

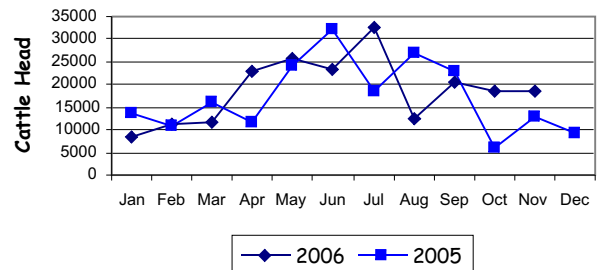
TOTAL Live Cattle Exports thru Port of Darwin 2005 v 2006



Live Cattle Exports thru the Port of Darwin (last 10 years)



NT Live Cattle Exports thru Port of Darwin 2005 v 2006



PREVIOUS 7 YEARS


Total Cattle, Port of Darwin							NT Cattle, Port of Darwin								
1998	1999	2000	2001	2002	2003	2004	2005	1998	1999	2000	2001	2002	2003	2004	2005
219,439	280,011	299,179	258,127	322,602	260,618	211,042	212,616	160,412	192,441	222,669	193,172	229,796	212,520	205,204	210,558

Pastoral Market Update

OTHER LIVESTOCK EXPORTS VIA DARWIN PORT (includes NT and Interstate Stock)

Destination	Buffalo			Camels			Goats			Deer			Horses			Sheep			Pigs			
	2005	2006	1-30 NOV	2005	2006	1-30 NOV	2005	2006	1-30 NOV	2005	2006	1-30 NOV	2005	2006	1-30 NOV	2005	2006	1-30 NOV	2005	2006	1-30 NOV	
BRUNEI	816	371	141	34	0	0	1,097	967	226	0	0	0	0	0	0	0	0	0	0	0	0	0
INDONESIA	100	724	50	0	0	0	10	57	0	0	0	0	9	0	9	0	0	0	0	0	0	0
PHILIPPINES	0	0	0	0	0	0	0	0	0	0	0	0	0	0	0	0	0	0	450	445	0	0
W-MALAYSIA	672	5,777	347	0	343	0	0	3,702	0	0	0	0	0	0	0	0	781	0	0	0	0	0
SABAH	314	659	38	0	0	0	3,016	6,764	6,083	0	0	0	18	0	5	0	0	0	0	0	0	0
TOTAL	1,902	7,531	576	34	343	0	4,113	11,490	6,309	0	0	0	27	0	5	0	781	0	450	445	0	0

NATIONAL CATTLE PRICES - W/E 1/12/06

JAPAN OX									MEDIUM STEER										
Estimated dressed weight price (cents/kg)									Estimated dressed weight price (cents/kg)										
SALEYARDS				O.T.HOOKS					SALEYARDS				O.T.HOOKS						
NSW	QLD	SA	AV (Aust)	NSW	QLD	SA	AV (Aust)	NSW	QLD	SA	AV (Aust)	NSW	QLD	SA	AV (Aust)	NSW	QLD	SA	AV (Aust)
This week	304	324	257	301	312	327	300	302	This week	281	320	275	291	308	304	295	298		
Last week	326	335	273	311	314	335	300	307	Last week	296	320	250	300	310	311	295	304		
Year ago	340	341	304	333	328	344	343	335	Year ago	341	340	312	336	322	339	339	334		
US COW									TRADE STEER										
Estimated dressed weight price (cents/kg)									Estimated dressed weight price (cents/kg)										
SALEYARDS				O.T.HOOKS					SALEYARDS				O.T.HOOKS						
NSW	QLD	SA	AV (Aust)	NSW	QLD	SA	AV (Aust)	NSW	QLD	SA	AV (Aust)	NSW	QLD	SA	AV (Aust)	NSW	QLD	SA	AV (Aust)
This week	221	240	195	217	240	243	207	209	This week	297	311	266	291	305	294	Nq	397		
Last week	243	272	195	233	244	253	210	213	Last week	311	323	269	312	308	302	Nq	311		
Year ago	305	296	279	296	275	294	270	264	Year ago	368	364	332	356	336	321	325	346		
LIVE EXPORT QUOTES									<p>Prices courtesy of Meat & Livestock Australia</p>  <p>www.mla.com.au</p>										
Estimated <u>live</u> weight price (cents/kg)																			
LIGHT STEERS (280-400 kg)				HEAVY STEERS (400+ kg)															
Darwin		Fremantle		Darwin		Fremantle													
This week	185		nq		170		nq												
Last week	185		nq		170		nq												
Year ago	175		nq		165		nq												

CURRENCY EXCHANGE RATES

Key Currencies 1AUD =	Current 1.12.2006	Previous month 1.11.2006	3 months ago 1.9.2006	1 Year ago 1.12.2005	Pre-devaluation 01.07.1997
Brunei Dollar	1.2304	1.21102	1.19442	1.26318	1.076
Indonesian Rupiah	7,200.55	6,976.94	6,952.10	7,407.34	1830
Philippine Peso	39.17207	38.13367	39.31115	39.93826	19.84
Malaysian Ringgit	2.81510	2.80995	2.71388	2.78178	1.9
Euro	0.59121	0.60305	0.58154	0.5701	N/A
US Dollar	0.78774	0.76258	0.74457	0.73629	0.752

Prepared by the NT Department of Primary Industry, Fisheries and Mines

This publication contains commodity market information prepared for DPIFM staff use in strategic research and extension planning. While DPIFM exercise care in the compilation and preparation of this information, no responsibility is taken for its accuracy or for the completeness of any information that is reproduced from other sources. DPIFM denies any loss or damage to any person whether caused directly or indirectly by the use of any of the information provided.

If undelivered return to:

Arid Zone Research Institute

PO Box 8760 ALICE SPRINGS NT 0871

Print Post Approved

PP54270/00020

**SURFACE
MAIL**

**POSTAGE
PAID
AUSTRALIA**

Glossary

ASPIAC: Alice Springs Pastoral Industry Advisory

CLMA: Centralian Land Management Association

CSIRO: Commonwealth Scientific & Industrial Research Organisation Committee

DAFF: Department of Agriculture, Fisheries and Forestry

DCQ: Desert Channels Queensland Inc.

DEET: Dept of Employment, Education and Training

DK-CRC: Desert Knowledge Cooperative Research Centre

DNRETA: Dept of Natural Resources, Environment and the Arts

DPIFM: Dept of Primary Industry, Fisheries and Mines

GLM: Grazing Land Management

GRASSp: Pasture Growth Model

MLA: Meat & Livestock Australia

NLIS: National Livestock Identification System

NLP: National Landcare Program

NTCA: Northern Territory Cattleman's Association

PIC: Property Identification Code

RFID: Radio Frequency Identification Device

SAAL NRM: South Australian Arid Lands Natural Resource Management Board

VRD: Victoria River District