

Goldfields country – red soils



Landform	Gently undulating to undulating rises.
Woody vegetation	Narrow-leaved ironbark and gum-topped bloodwood woodland with occasional forest red gum and Reid river box along drainage lines. Understorey of currant bush and corkwood wattle.
Expected pasture composition	<i>* Denotes non-native "Expected Pasture Composition" species.</i>
Preferred	Desert bluegrass, forest bluegrass, curly bluegrass, buffel grass*, urochloa*, cotton panic, black speargrass, kangaroo grass.
Intermediate	Hairy panic, golden beard grass, Indian couch*.
Non-preferred	Feathertop wiregrass, fairy grass, red Natal grass*.
Annuals	Button grass.
Suitable sown pastures	Buffel grass, urochloa, creeping bluegrass, butterfly pea, Shrubby stylo, Caribbean stylo, Caatinga stylo.
Introduced weeds	Chinee apple, rubbervine, bellyache bush, calotrope, lantana.
Soil	Brown loam over red clay duplex soil (chromosol).
Description	Surface: Friable where topsoil exists; Surface texture: loam; Subsoil texture: medium to heavy clay.
Water availability	Low

Fertility	Low
Salinity	Non-saline
Sodicity	Non-sodic
pH	Neutral to slightly acid.

Long-term carrying capacity information (A condition)

Based on fully watered area for 1AE = 450 kg animal consuming 8kg DM/day				
Median annual rainfall 608 – 739 mm				
Pasture type	Median tree cover (TBA m ² /ha) (FPC %)	Median annual pasture growth (DM kg/ha)	Safe annual utilisation pasture growth (%)	LTCC (ha/AE)
Native species	0 TBA/FPC	2200 - 2270	25%	5.1 – 5.3
	8 TBA 20 FPC	810 - 870	25%	13 – 14

Enterprise

Growing and finishing.

Land use and management Recommendations

- Rotational wet seasons spelling to maintain perennial pasture composition.
- Whoa boys are required on roads/tracks to control erosion.
- Maintain vigorous pasture to prevent weed invasion.
- Use fire to maintain preferred pasture composition and suppress woody species.
- Maintain at least 50% ground cover at end of dry season to maximise infiltration and reduce soil erosion.

Land use limitations

- Narrow-leaved ironbark and bloodwood thickening.
- Increased prevalence of currant bush in the understorey.
- Generally limited soil erosion hazard. However, past land uses, including mining and grazing, have had a widespread legacy effect in terms of sheet, rill and gully erosion.

Conservation features and related management

- Vulnerable to invasion by weed species such as rubbervine, mimosa, and chinee apple.

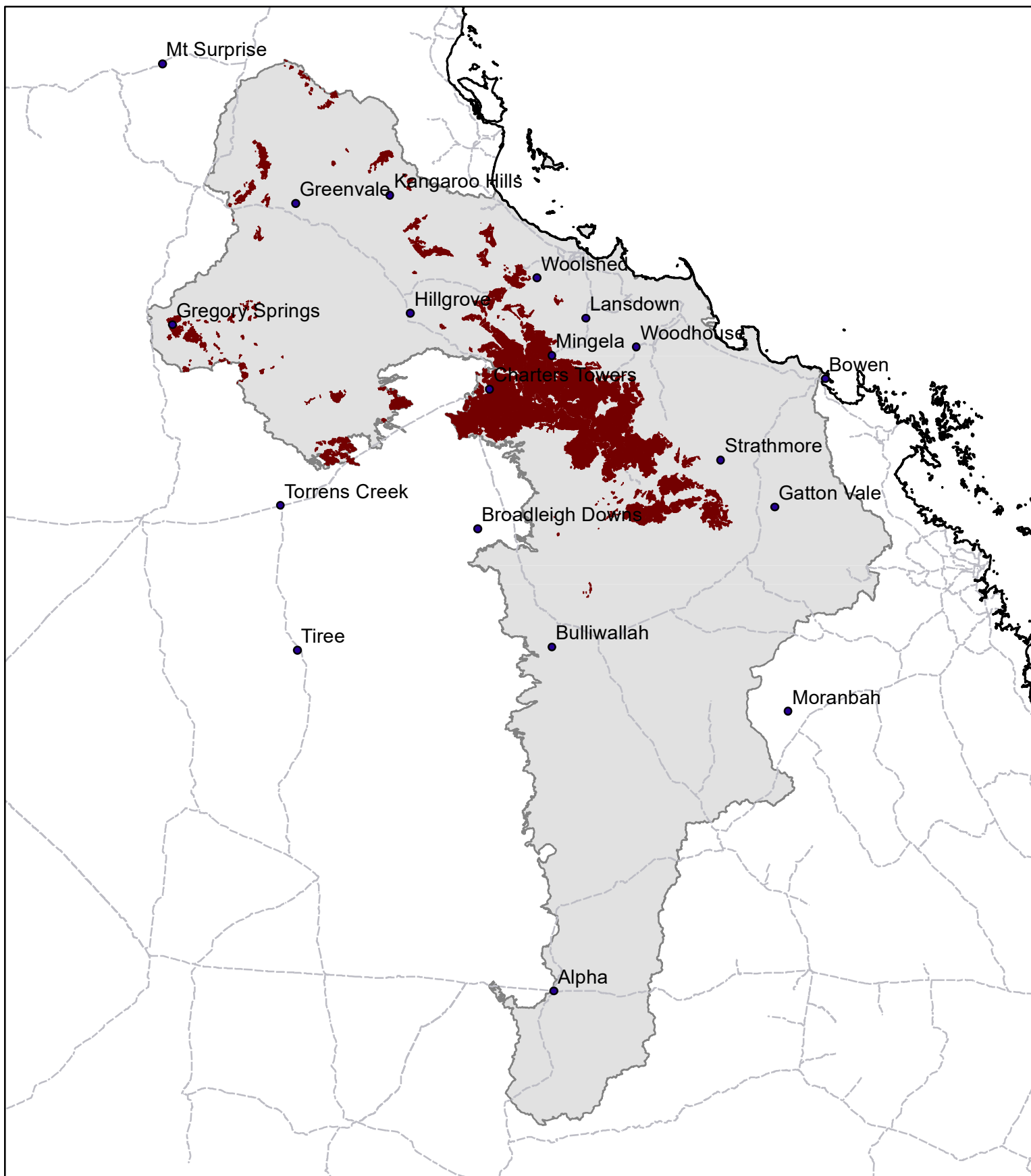
Regional Ecosystems

11.12.1, 9.12.1a, 9.12.1b, 9.12.1d, 9.12.1e, 9.12.1f, 9.12.21.

Land units; Agricultural management unit; Soil associations

Soil Associations (Rogers *et al* 1999) Dalrymple, Charters Towers.

BD11 Goldfields country – red soils



Area of land type in region: 7%
Median rainfall (region): 440 – 981 mm
Average rainfall (region): 476 – 1112 mm
Area of land type with FPC: 92%
Median FPC: 20%
Median TBA: 8 m²/ha



Queensland
Government