

Frontage / alluvial country



General description

Occasionally flooded alluvial plains, often with braided channels. Generally open woodland / shrublands of various woodland communities associated with open tussock grasslands and ephemeral forblands.

Alluvial country covers about 14.6% of the Channel Country.

Landform

Alluvial plains.

Woody vegetation

Coolibah, river red gum, mulga, gidgee, western bloodwood, yapunyah, Georgina gidgee, belalie, gooramurra, mineritchie, lignum, cassia.

Expected pasture composition

** Denotes non-native "Expected Pasture Composition" species.*

Preferred

Mitchell grass (barley, bull, occasionally curly and hoop), curly bluegrass, Queensland bluegrass, kangaroo grass, Queensland bluebush; increasing areas of buffel grass*.

Intermediate

Rat's tail couch, katoora, lovegrasses, silky browntop, golden beard grass, five-minute grass.

Non-preferred

Feathertop wiregrass.

Annual grasses

Downs couch, Flinders grass, button grass, comb windmill grass, delicate lovegrass, pepper grass. Kerosene grass (non-preferred).

Common forbs

Copperburrs, gidgee burrs, joyweed, bogan flea, daisy burrs, pop saltbush, annual saltbush.

Suitable sown pasture

Not suitable for sown pastures.

Introduced weeds

Noogoora burr, parkinsonia, Athel pine.

Soil

Generally clays – very deep red, brown and grey, some red earths and loamy or sandy surfaced texture contrast soils, some yellow sands in associated with sand dunes. Occasionally gilgaied and most are subject to seasonal scalding. Gypsum may be present at depth.

Description

Surface: Crusted to weakly self mulching, **Surface texture:** medium to heavy clays with some sandy or silty clays, **Subsoil texture:** medium to heavy clays with some sandy or silty clays.

Features

Some occurrence of scalding. Gravel though profile with gypsum occurring at depth in some areas.

Water availability

Rooting depth

Infiltration

Fertility

Salinity

Sodicity

pH

Utilisation

Moderate to good.

Can be in excess of 1 m if not limited by sodicity.

High initially on a dry soil profile, slowing to moderate levels after 35 mm of rain as surface seals and to low levels after 50 mm of rain. Estimates based on low to moderate intensity storm rain.

Moderate.

Very low to low at the surface increasing to very high at depth.

Sodic to strongly sodic at depth.

Slightly acid to very strongly alkaline.

Based on fully watered area for 1AE = 450 kg animal consuming 8kg DM/day				
Median annual rainfall 151 – 390 mm				
Pasture type	Median tree cover (TBA m ² /ha) (FPC %)	Median annual pasture growth (DM kg/ha)	Safe annual utilisation pasture growth (%)	LTCC (ha/AE)
Native species	0 TBA/FPC	200 - 2500	18%	6 - 81
	3 TBA 8 FPC	50 - 2050	18%	8 – 325

Enterprise

Land use and management recommendations

Breeding, backgrounding and finishing.

- Suitable for grazing of native pastures.
- Provides shade and useful top-feed.
- Maximise ground cover to reduce soil erosion.
- Strategic burning to manage gidgee thickening with late dry season hot fires.
- Some clay pan areas can be returned to deep cracking clays using shallow pondage systems.

Land use limitations

Conservation features and related management

- Minor stream bank erosion leading to sedimentation of permanent waterholes.
- Scalding occurs in some areas.
- Provides seasonal habitat and drought refuge for a wide range of wetland birds.
- Provides habitat for rare and threatened species such as grey grass wren and freckled duck.
- Potential impacts on riparian areas from total grazing pressure.
- In some areas 10–15% of gidgee trees stand dead.
- In some areas 30–50% of tall shrubs stand dead.
- Exotic weed species in some areas.
- Springs are within Great Artesian Basin discharge areas. Impacted by artificial extraction, excavation, pig diggings and stock trampling. Habitat for feral pigs and cats.
- Rills on tracks and fence lines may restrict floodwater reaching floodplain extremities.

Regional Ecosystems

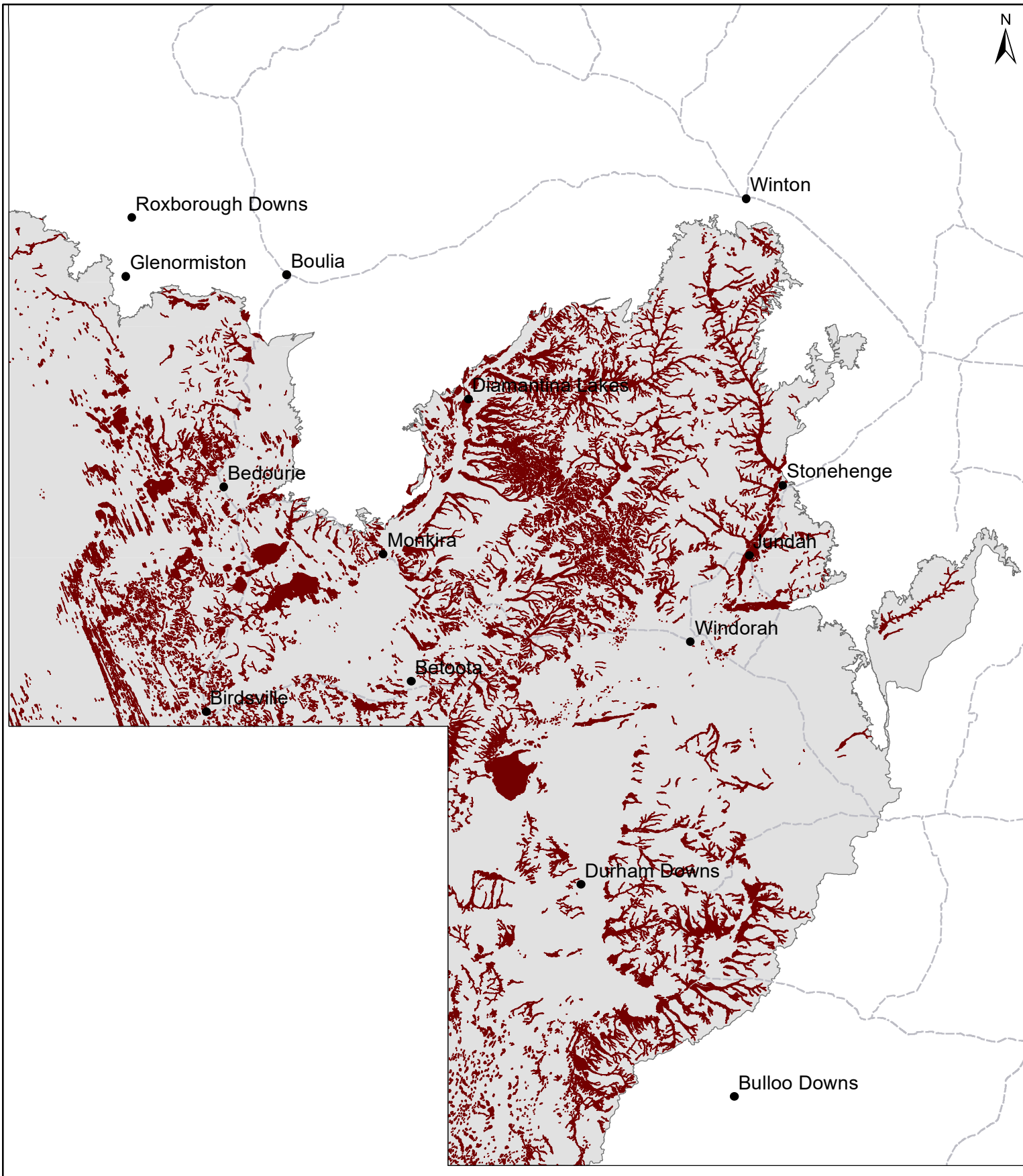
5.3.10, 5.3.2, 5.3.20a-c, 5.3.21a-b, 5.3.22a-b, 5.3.4, 5.3.5, 5.3.6, 5.3.6x1, 5.3.9, 5.3.9x1, 5.7.13, 6.3.2a, 6.3.3a.

WARLUS Part

Land systems

I	II	III	IV	V	VI
A1, A2, A3, A4, A5, A6, W1, W2, W3, W4, W5, W6, W7	A1, A2, A3, A4, A5, A6, W1, W2, W3, W4, W5, W6, W7				A1, A2, W1, W2

CC04 Frontage / alluvial country



Area of land type in region: 9%
Median rainfall (region): 151 – 390 mm
Average rainfall (region): 187 – 429 mm
Area of land type with FPC: 26%
Median FPC: 8%
Median TBA: 3 m²/ha



Queensland
Government