

Jump-ups / dissected residuals



General description

Actively eroding dissected low hills, mesas, buttes and tablelands, and scarps that form ranges with shallow soils and significant stone pavements. Slopes and flanks generally sparsely vegetated with hummock and tussock grasses. Tops, gullies and lower flanks usually timbered.

Jump-ups cover about 21% of the Channel Country.

Landform

Low hills, mesas, buttes and tablelands, and scarps.

Woody vegetation

Mulga, gidgee, bastard mulga, beefwood, mineritchie, lancewood, dead finish, bendee, dwarf needlewood, snappy gum, Normanton box, witchetty bush, turkey bush, Georgina gidgee, silver-leaved ironbark, tea tree, ghost gum.

** Denotes non-native "Expected Pasture Composition" species.*

Expected pasture composition

Preferred

Spinifex, kangaroo grass, neverfail, silky umbrella grass, mulga Mitchell, cotton panic.

Intermediate

Woollybutt, five-minute grass, lemon-scented grass, woollybutt wanderrie, mountain wanderrie.

Non-preferred

Pencil caustic bush, hard burrs.

Annual grasses

Australian dropseed. Kerosene grass (non-preferred).

Common forbs

Foxtails, abutilon, copperburrs, soft roly poly, sida.

Suitable sown pasture

Not suitable for sown pastures.

Introduced weeds

None

Soil

Very shallow lithosols with exposed rock and gibber stone cover, through to desert loams and shallow sandy red earths often with in some areas.

Description

Surface: Hard-setting and crusting, often with stone and gravel cover, **Surface texture:** sandy loam, **Subsoil texture:** weathered parent material.

Features

Eroded sediments and sandstones. Limestone outcrops. Limestone fragments in red soils.

Water availability

Very low.

Rooting depth

Very shallow to shallow.

Infiltration

Very low. High proportion of run-off following 5 mm of rain, even under low intensity rainfall. Run-off contributes to neighbouring land types.

Fertility

Very low.

Salinity

Very low.

Sodicity

Non-sodic.

pH

Acidic loams. Shallow red soils fair to very high at the surface decreasing rapidly to low values down the profile.

Long-term carrying capacity information (A condition)

Based on fully watered area for 1AE = 450 kg animal consuming 8kg DM/day				
Median annual rainfall 175 – 390 mm				
Pasture type	Median tree cover (TBA m ² /ha) (FPC %)	Median annual pasture growth (DM kg/ha)	Safe annual utilisation pasture growth (%)	LTCC (ha/AE)
Native species	0 TBA/FPC	60 - 550	10%	53 - 487
	<1 TBA 1 FPC	> 30 - 320	10%	< 91 – 974

Enterprise

Rarely grazed.

Land use and management recommendations

- These lands are generally unproductive but are of value for water-shedding and recreation.
- Maximise ground cover to reduce soil erosion, especially on slopes.
- These areas provide good run-off for adjacent country.
- Provides shade.

Land use limitations

- Useful run-off country, responds quickly to rainfall.
- Rarely grazed by cattle, except on lower slopes and gullies.
- Low palatability of perennial pastures.
- Limited top feed.
- Poisonous plants including pencil caustic, and Georgina gidgee within the Georgina basin.

Conservation features and related management

- Habitat for rare and threatened yellow footed rock wallaby, kowari and grey falcons.
- High density of raptors with nesting sites.
- Soils subject to sheet and gully erosion in some areas.
- Some areas require mosaic burning to retain diversity and restrict wildfires.

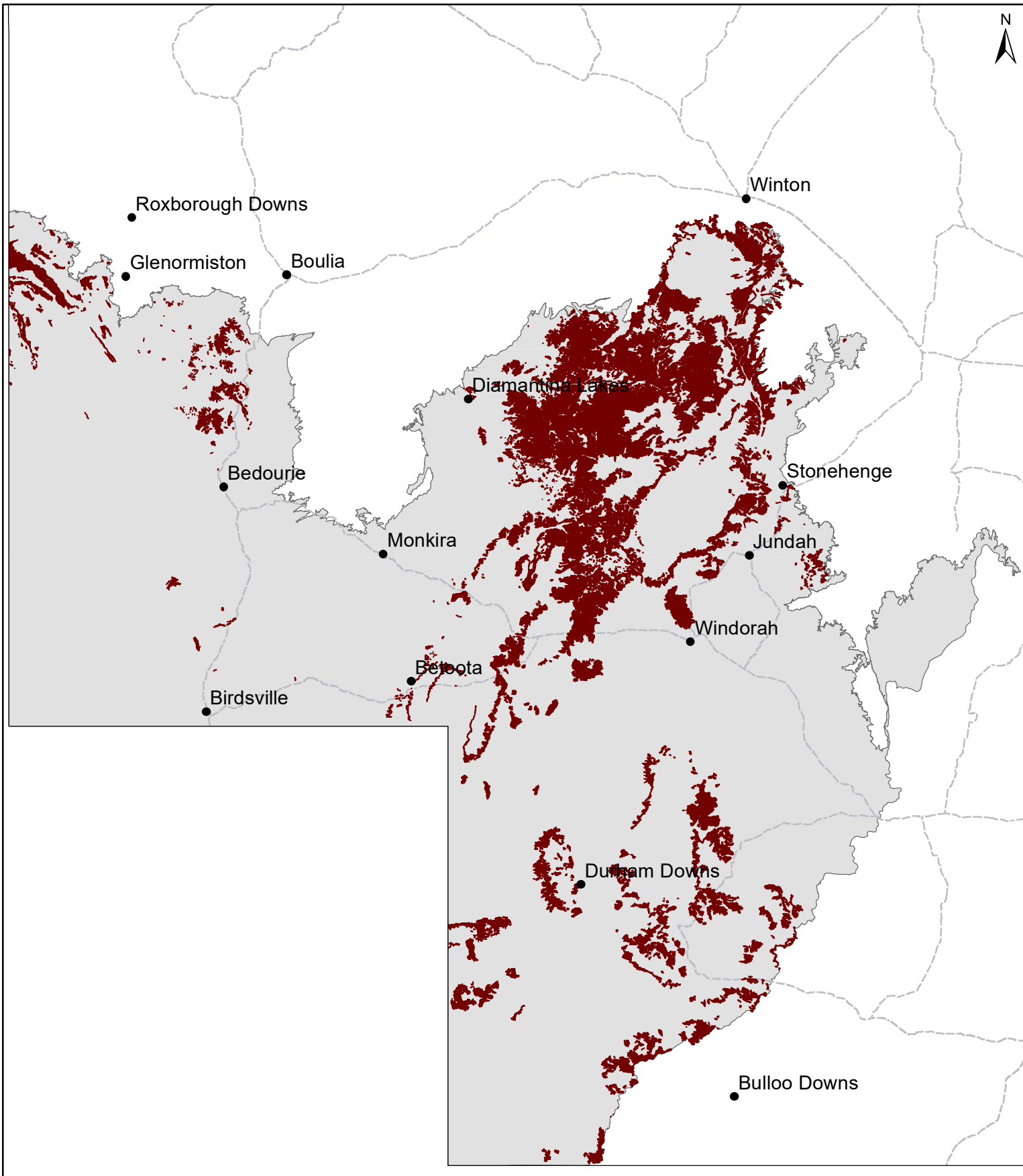
Regional Ecosystems

5.5.4, 5.5.4x1, 5.5.5, 5.7.1, 5.7.12, 5.7.14, 5.7.14x1, 5.7.15, 5.7.2, 5.7.3, 5.7.4, 5.7.5, 5.7.9, 5.9.1, 5.9.1a, 5.9.2.

WARLUS Part Land systems

I	II	III	IV	V	VI
R1, R2, R3, R4, R5, R6	R1, R2, R3, R4, R5, R6, R7, R8	R1, R2, R3	R1, R2, R3, R4	R1, R2, R3, R4	R1, R2, R3, R4, R5

CC13 Jump-ups / dissected residuals



Area of land type in region: 10%
Median rainfall (region): 151 – 390 mm
Average rainfall (region): 187 – 429 mm
Area of land type with FPC: 55%
Median FPC: 5%
Median TBA: 2 m²/ha



Queensland
Government