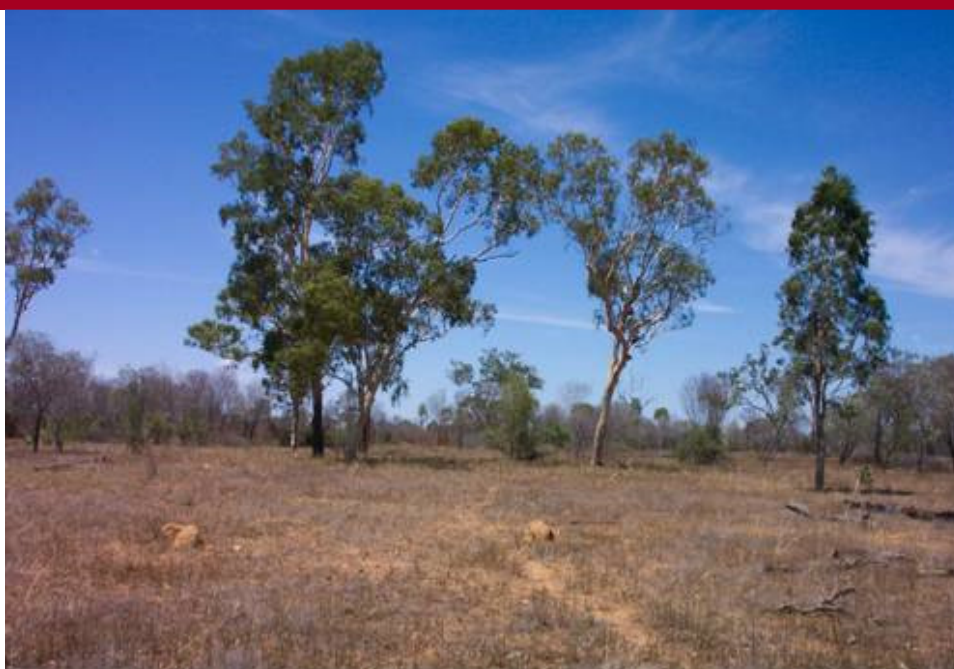


Eucalypts and bloodwood on sandy tableland



Landform	Mountains and ranges.
Woody vegetation	Silver-leaved ironbark, narrow-leaved ironbark, Moreton Bay ash, ghost gum, large-fruited bloodwood woodland. Understorey, where present, of red ash, wattles, heath myrtle, paperbark tea tree and quinine.
Expected pasture composition	<i>* Denotes non-native "Expected Pasture Composition" species.</i>
Preferred	Black speargrass, kangaroo grass, hairy panic, desert bluegrass.
Intermediate	Golden beard grass.
Non-preferred	Barbwire grass, many-headed wiregrass, dark wiregrass, wanderrie grass, bottlewasher grasses, summer grass, fairy grass, lovegrasses, five-minute grass.
Annual grasses	Small burr grass, comet grass.
Suitable sown pastures	Oversow with legumes, shrubby, Caribbean, Caatinga stylos.
Introduced weeds	
Soil	Red and yellow sandy earths (tenosol).
Description	Surface: Loose to firm; Surface texture: sand or loamy sand; Subsoil texture: sandy loam to sandy light medium clay.
Water availability	Very low.

Rooting depth	0.9 m
Fertility	Very low total nitrogen; very low phosphorus.
Salinity	Non-saline
Sodicity	Non-sodic
pH	Neutral to acid.

Utilisation 20%

Enterprise Breeding

- Land use and management recommendations**
- Do not develop.
 - Stock conservatively to maintain good grasses.

- Land use limitations**
- Very low fertility.
 - Regrowth

- Conservation features and related management**
- Important water recharge areas.
 - The bloodwoods that dominate these woodlands flower early in season (usually by early December) and provide food source for a wide range of arboreal mammals (e.g. brushtail possums, sugar gliders, little red flying foxes) and migratory birds especially over-wintering small birds. Red-tailed black cockatoos are attracted to seed capsules.
 - Some areas provide habitat for rock wallabies and quail thrushes.
 - Light grazing is recommended for these woodlands with patch/mosaic burning.

Regional ecosystems 8.5.5, 11.5.12a, 11.5.7, 11.5.12, 11.5.18.

Land units; Agricultural management unit; Soil associations Land units (Gunn *et al* 1967; Story *et al* 1967) Lennox 2, Tichbourne 2, Degulla 1, Ronlow 2, Monteagle 1, Humboldt 1; Soil associations (Burgess 2003) Bills Hut.