

BARKLY BEEF



Northern Territory Government
Department of Business, Industry & Resource Development

Published by the Northern Territory Department of Business, Industry and Resource Development, Tennant Creek. ISSN 1325-9539

Volume 9

Issue 3

September 2003

Landmark meeting on Barkly Tablelands

For the first time, the three groups responsible for the wellbeing of the pastoral industries on the Northern Territory's Barkly Tablelands held a joint meeting recently to discuss critical issues facing one of Australia's most remote areas.

Members of the NT Cattlemen's Association (NTCA), the Barkly Landcare & Conservation Association (BLCA) and the Barkly Region Bushfires Council came together for a meeting at Brunette Downs Station on the 4th of September.

Close to 65 people attended the combined meeting including many pastoralists, Department staff and other dignitaries.

Key coordinator for the meeting was NTCA executive director Stuart Kenny. Following the event he said that not only were a number of critical issues affecting the pastoralists of the region identified, but the Minister for Primary Industry, Chris Burns, attended and gave an undertaking to investigate

and report back on these issues.

The main issues on the agenda were roads, weeds, fire, health and communications, and these issues were the topic of many conversations throughout the day – not just during the formal meeting time.

The success of the combined meetings was obvious by the very large attendance throughout the day which provided the opportunity for everyone to be involved in the different aspects and priorities of the three key pastoral groups.

The meetings were kept to a strict time schedule to ensure everyone had plenty of daylight to travel home afterwards in. The majority of participants agreed the idea of a combined meeting had worked very well, and planned to continue similar forums on a more regular basis.

Brunette Downs were very impressive hosts, largely due to Bernadette & Henry Burke.

Position filled in DBIRD office

With the recent departure of temporary Administration Officer Catherine Lavery at the front desk of the DBIRD – Primary Industries office, a new permanent employee has now been assigned to the position. Local Tennant Creek resident Natalie Koehn took on the position and commenced on the 18th of August.

Natalie has lived in Tennant Creek for a total of 17 years. Originally from Modbury in Adelaide, South Australia, she moved to Tennant Creek with her family in 1981. She grew up in Tennant Creek and completed all of her schooling here (from pre-school through to high school).

After finishing high school Natalie worked with Normandy Poseidon in the Geology department as a draftsman, then decided to leave to study a Bachelor of Science at Northern Territory University in Darwin and at QUT in Brisbane. While studying at Uni she worked in areas of the mining and hospitality industries and with

various government agencies to support her Uni studies.

Two years ago, Natalie returned to Tennant Creek to fulfill a six-month contract at the Tennant Creek High School as a Laboratory Technician in the Science Faculty. To keep herself busy she also tutored students from the bush

communities at the local hostel in the evenings and a senior biology student on the week-ends.

Once Natalie's contract was up in the Science Faculty, she decided to stay on in Tennant Creek where she then took up a position as an Administration Assistant at the high school

which is where she has been working prior to her appointment with Primary Industries.

Natalie lives in Tennant Creek with her fiancé Anton (another long time local) and their two "children" - dogs Nanuk an Alaskan Malamute and Bella a Golden Labrador.



A word from the Regional Director...

It has been a very hectic three months since our last newsletter.

The Tennant Creek Show had us very busy getting things ready before hand, including painting the rails of the cattle yard, and then staffing our pavilion, assisting with the cattle section and the Droughtmaster BBQ during the Show. We would not have been able to cope without the willing hands of several people from our Alice Springs office.

Several of us also travelled to Borroloola for their Show where we erected our marquee and displayed a lot of our posters etc. Ted Martin's electronic eartag reader was a good drawcard for the display. Not surprisingly the majority of questions concerned fishing and the handout material about amateur fishing was very popular.

I attended the presentation evening for the NT Landcare Awards at Parliament House in Darwin in August. The Barkly region did extremely well receiving three awards and I extend a big thank you to all those involved in the projects that deservedly won the awards. I also acknowledge Ross Peatling's generosity in donating his \$1000 prize money

to the Barkly Landcare Association and also to Sally Towne for her untiring work as Facilitator of the group.

Catherine Lavery resigned as our Administration Officer in July to continue working her way around Australia and Natalie Koehn took up the position in August. Recruiting for a temporary technical Pastoral Officer and the Animal Production Officer is well under way.

Rural Consulting Services ran a very good two-day Cattle for Profit workshop in July & it was a pity that it was a bad time of year to hold the workshop. They are now aware of the need to consult re the timing of any future workshops.

The recent NTCA, Landcare & Bushfires Council meetings at Brunette Downs were a huge success with more than 60 people attending. Minister Burns attended and it was his first opportunity to visit some stations on the Barkly Tableland since taking up the Primary Industry & Fisheries portfolio. Top marks go to Henry & Bernadette Burke for being such wonderful hosts.

*Jenny Purdie
Regional Director*

Borroloola Show 2003

As Borroloola is located in DBIRD's Barkly region, staff from Tennant Creek travelled up to represent the department in this small community for their annual Show recently.

The Show is held in conjunction with their annual campdraft, gymkhana and rodeo and attracts residents from Borroloola and King Ash Bay as well as many local pastoralists from around the district.

A number of staff travelled up to Borroloola to represent the Department including Regional Director Jenny Purdie, Communications Officer Anna Barry, Pastoral Extension Officer Pam Allsop, Stock Inspector Ted Martin, FarmBis Officer Ian Maclean and Regional Manager for Business

& Trade Development, Peter Davenport.

Display information consisted of an interactive cattle crush with weighing mechanism and computerised reader of eartag details. This setup provides pastoralists with information on the soon to be introduced National Livestock Identification System. Posters on Fisheries and the Indigenous Fishing Officer program, a range of Business information, fossicking, mining, Amazing Facts posters, cattle production and rangeland information was on display. A selection of supporting brochures, flyer and leaflets were also provided.

The weekend was successful with the majority of showgoers visiting the display and taking away information or giveaway items.



↑ The DBIRD display at Borroloola Show attracted many visitors during the two days.



↑ Regional Director Jenny Purdie inside the DBIRD marquee, which was filled with information on the Primary Industries group & the Business & Trade Development group.

NLIS demonstration tool

The animal health staff in the Tennant Creek DBIRD office have been very busy building a portable demonstration tool to be used within the region to assist pastoralists with the uptake of the National Livestock Identification Scheme (NLIS).

The demonstration cattle crush, weigh scales with fitted NLIS reader system, is designed to travel on a customised trailer across the Barkly and Gulf regions when there are requests to visually see how the system works.

In mid-August the trailer had its first trip up to Borroloola to coincide with the annual Campdraft, Rodeo and Show which attracted a number of Station managers and staff to gain a better understanding of what is involved in NLIS.

Despite a few minor hiccups with the computer linkage to the system, onlookers at Borroloola could still gain a basic idea of what the Scheme was about. Stock Inspector Ted Martin towed the trailer to Borroloola, and was there to explain and demonstrate the system and answer any questions as they arose.

NLIS is the system Australia has adopted for improved and greater identification and traceability of livestock. Its main benefit is that it is a whole-of-life identification system enabling individual

animals to be tracked from property of birth to slaughter for food safety, product integrity, market access purposes and on-property data. The system is an enhancement of the current tail tag system that has been a successful tracing mechanism for the past 30 years in Australia.

For further information regarding NLIS or to let us know you are interested in seeing how it works through our portable system, please contact:

Ted Martin
Regional Stock Inspector
Tennant Creek
Ph. 08 8962 4490

Or

Pam Allsop
Pastoral Extension Officer
Tennant Creek
Ph. 08 8962 4494



↑ The portable system was a popular attraction at the Borroloola Show DBIRD display, providing a greater understanding of how the system works.

BARKLY REGION TAKES HOME THREE LANDCARE AWARDS

The Barkly Region has taken out three of the Northern Territory's major Landcare Awards.

Barkly Landcare Facilitator Sally Towne, DBIRD Regional Director Jenny Purdie and Executive Officer Helen Kempe travelled to Darwin to represent the Barkly Region for the awards on the 22nd of August.

Sally Towne accepted the awards on behalf of the Barkly Landcare & Conservation Association and said it was a great feeling to be accepting awards on behalf of the people of the Barkly Region. She said all the enthusiasm, hard work and dedication from all those involved in making these awards possible had most certainly paid off.

Not only have we been accomplishing some great results in Natural Resource Management in the Barkly, we are now being recognised as some of the leaders in the field in the Northern Territory.

An added bonus on top of winning the awards was that each award came with a beautiful trophy as well as \$1000.

The awards the Barkly Region received were:

Bushfires Management Award Won by Ross Peatling Manager Alexandria Station

“Awarded to a Landowner or Manager for excellence, innovation and the application of fire to maintain or enhance land conservation, biodiversity or sustainability of natural pastures”

Ross is an active member of the Barkly Bushfire Council and the Barkly Landcare and Conservation Association and has been the inspiration towards the implementation of a number of regional fire management projects. Projects include:

- The Barkly Highway firebreak to protect the Barkly Tablelands from the effects of adverse fires stemming from human activity;
- A NHT envirofund project that brings together pastoralists and indigenous people for collaborative bushfire training followed by the implementation of controlled burning practises on Mitchell Grassland.

The entire Barkly region has benefited from Ross's inspiration and foresight into fire management. Ross remains pro-active in wildfire control and continues to lead the way in pioneering the use of fire as a pasture management tool, and actively works towards the maintenance of pasture health for cattle production while conserving the unique biodiversity.

**Murray Darling Basin
Commission Rivercare Award
Won by the Barkly Landcare
and Conservation Association**

Awarded to a community organisation, person or group which has made a significant contribution to the sustainable management, conservation and rehabilitation of a waterway (i.e. rivers, streams, creeks and wetlands)

In 1999 a cooperative and integrated project was started by the Barkly Landcare and Conservation Association members and landholders in the Playford catchment to urgently address the threat being posed to the Playford River Catchment by Parkinsonia. As a result a collaborative approach was taken to eradicate the weed from the river system before it gained a stranglehold.

The Playford River Catchment is located on the Barkly Tableland, Northern Territory. The catchment runs through 5 large cattle stations covering an area in excess of 666 000 hectares. Prior to the work commencing on the Playford River catchment in 1999 the area had been suffering from negative impacts over many years. Native flora and fauna were outcompeted by the invasive woody weeds *Parkinsonia aculeata* (Parkinsonia), *Prosopis pallida* (Mesquite) and *Xanthium*

occidentale (Noogoora burr) which lead to loss of biodiversity and habitat for native flora and fauna.

As part of the success of this ongoing control program, we are now seeing evidence of natural revegetation, the repairing of streambank condition, the return of native fauna to their natural habitat and the slow rejuvenation of the wetland area. This all demonstrates that we have improved the catchment productivity and biodiversity leading to sustainable management, conservation and rehabilitation of the Playford Catchment.

This project has promoted community awareness and participation in the planning, management and implementation of on-ground woody weed control programs and watercourse protection for the Playford River. The encouraging results have prompted many Land Managers in the Region to become more involved in Regional Natural Resource Management Issues.

**Sensis Landcare Catchment
Award
Won by Barkly Landcare and
Conservation Association**

This award was made to a Landcare group, catchment committee or other organisation for excellence and innovation in creating and carrying out a Catchment Plan.

An interim strategy for the Barkly region has been developed and it was the culmination of community visions instigated at the Barkly Region Collaborative NRM Workshop held in September 2002, where over 50 participants voiced their opinions on appropriate directions. Only recently set in place the strategy is aimed directly at addressing the limitations encountered where the geography is harsh and immense, and the human resources overextended.

Preceding any form of regional or catchment planning within the NT, the strategy is a recognised tool in providing direction in 'community led' planning to the forthcoming regional planning process.

The Rivercare award and Catchment award will now be entered in the National Landcare Awards to be held in Canberra in August 2004.



← Barkly Landcare Facilitator Sally Towne accepting the awards on behalf of the Barkly Landcare group in Darwin recently.



← Minister for Primary Industries Chris Burns presents Ross Peatling (Alexandria Station) with his State Landcare Award for Bushfires Management.

100% clearance for NT Bull Sale

July saw the annual Show circuit traverse the Northern Territory once again, and included in the activities in Tennant Creek were the DBIRD display, commercial cattle competition and 2nd annual Droughtmaster Bull Sale.

The central theme of DBIRD's display was a maze featuring information about DBIRD's different groups - Primary Industries, Business & Trade, Minerals & Energy, Fisheries. A set of posters containing Amazing Facts specific to the Barkly region complemented the core theme. The display continued outside with a fishing competition for children, a 'sand pit' mine, an aluminium processing 'factory', citrus tasting and the ever popular 'guess the weight of a heifer' competition. A competition based around the main display also generated interest, as did the local content information which supported the central theme.

A wide array of Barkly Region beef cattle were entered into the various classes within the cattle section this year, with some unexpected results produced by judge Rob Atkinson of Toowoomba.

There were no surprises when Brunette Downs retained the Highest Aggregate Points award (as they have done for the past

four years now), but the results in the individual classes caught quite a few judging competition entrants unawares. The overall results are as follows:

Pen of 2 Bulls – 1st Herbertvale, 2nd Glenlands, 3rd Medway

Single Bull over 2 years – 1st Alroy, 2nd Brunette, 3rd Helen Springs

Pen of 3 Mature Breeding Cows – 1st Rockhampton Downs

Pen of 3 Heifers (250-400kg) – 1st Brunette, 2nd Alroy, 3rd Alroy

Pen of 3 Steers (250-350kg) – 1st Austral, 2nd Avon, 3rd Rockhampton Downs

Pen of 3 Steers (350-450kg) – 1st Austral, 2nd Brunette, 3rd Brunette

The 2nd Annual NT Droughtmaster Bull Sale was an all-round success this year with the average sale price down slightly on last years at \$2471 but with a 100% clearance compared with last years 91% clearance rate. The highest sale price was \$3500. Volume buyers during the sale included Peter & Brenda Saint from Kurundi Station in the Tennant Creek region.

The NT Droughtmaster Bull Sale committee said they were pleased with the results, and assured me they would return again to host the 3rd Annual Sale in 2004.

*Pam Allsop
Pastoral Extension Officer*



Field Notes' "Landcare direct from the field"

Hi once again, hope you are all well and happy. Since the last newspaper article it has been all systems go writing applications for the Barkly Region for Round One of the 2003/04 Envirofund applications and the 2003 National Landcare Awards.

The BLCA put in four Envirofund applications and four National Landcare Award applications, so it has been a busy few months. Thankfully all applications were in by the deadline dates. We will hopefully find out by the end of September how we went with our envirofund applications, and I am very happy to report that we won three out of the four Landcare Awards that we submitted (refer Landcare Award Article).

Following is a brief summary of each of the envirofund applications that we put in for:

1. Riparian restoration and biodiversity enhancement of the Tarrabool Lake Catchment

This project will lead to the sustainable land management and the enhancement of biodiversity through the rehabilitation of the fragile riparian area of the Tarrabool

Lake catchment. Native flora and fauna is increasingly being outcompeted by the invasive woody weed *Parkinsonia aculeata* leading to reduction in biodiversity values, loss of habitat for native fauna and streambank erosion.

A collaborative approach will be taken to manage the noxious weed infestations in the headwaters and along the length of Creswell Creek leading into the Tarrabool Lake. The project activities will result in improved catchment productivity and biodiversity, and underpin efforts to maintain the wetland area in its natural state.

Education and awareness will also be an integral part of this project to ensure that the community maintains the project outcomes into the future.

2. "Best Management Practises - Erosion Control" on the Barkly Tablelands

This project will provide hands on training and education for Indigenous and Pastoral Land Managers and heavy machinery operators in "Best Management Practices – Erosion Control" on the Barkly Tablelands.

It will involve a series of 3-day workshops incorporating both theoretical and practical sessions.

The project will increase awareness of pastoral and rangelands soil erosion along linear infrastructure such as access roads/fences, the cost of erosion to budgets production levels, and soil conservation planning in property and community management plans. The project will provide the opportunity for a collaborative approach to erosion control on the Barkly Tablelands and will act as a catalyst for ongoing workshops and improved sustainable land management practises in the region.

3. Exclusion of stock and rehabilitation of the Playford River Waterhole

This project will exclude stock and rehabilitate the fragile river frontage country of the Playford River Waterhole by fencing off the riparian area and relocating the stock watering point approximately 3km north. The water will be pumped to the new watering point from an existing bore. The fenced area will be approximately 150m by 300m.

The completion of these project works will lead to the return of native flora and fauna that in the past have been out-competed by the stock.

The fenced off area will act as a demonstration site adjacent to the Tablelands Highway for

land managers in the region and will also be enjoyed by many passing travellers as a natural area host to a diverse range of native flora and fauna species

4. Extending sustainable management of the Playford River

The proposed project involves fencing the southern frontage of the Playford river (on Alexandria Station) excluding livestock access to the riparian area for grazing and to a nearby bore. The fence will be approximately 13 km.

Fencing the river will allow effective control of grazing pressure along the river frontage in order to facilitate regeneration of native vegetation along the riverbanks and floodplains and prevent further destabilisation of the soil.

The fence will with also enable more effective management of the adjacent paddock to the south (Crouch's), as the bore will be able to be controlled and turned off, encouraging stock away from the southern portion of the paddock.

Lets hope we receive funding for these projects.

Bye for now, keep smiling, take care and remember, looking after our environment is looking after our future!!!

Sally Towne
Barkly Landcare Facilitator
Ph: 08 8962 4479

*Fax: 08 8962 4480
barklylandcare@switch .com.au*



RIRDC RURAL WOMEN'S AWARD 2004

Promoting Women in Agriculture and Natural Resource Management

The Rural Industries Research and Development Corporation's (RIRDC) Rural Women's Award 2004 is now open for applications.

The award supports women with a strong positive vision for the future of rural Australia and is open to all women involved in agriculture, including forestry & fisheries, natural resource management and related service industries.

The award comes with a \$15,000 bursary for the Northern Territory winner, to enable her to further develop her skills; to bring to fruition her vision for the future of her industry and to increase her capacity to contribute to agriculture and natural resource management for the benefit of rural Australia.

The Award also provides financial assistance of \$5,000 for the runner-up to be put towards her vision and skills development. The winner will also have the opportunity to attend an Australian Institute of Company Director's Course.

The bursary may be used for activities that build on leadership, management or business skills. Examples of eligible activities include an overseas study tour, formal training in a variety of fields from leadership or business management programs to quality assurance and product diversification or specific projects that benefit the winner's industry and its people.

Fliers with guidelines, selection criteria and application forms are available from the Tennant Creek Office of the Department of Business, Industry and Resource Development (phone 8962 4488) or can be downloaded from the Internet at www.ruralwomensaward.gov.au. Rural women may nominate themselves, or alternatively, if any of you know of a deserving rural woman you may nominate her. Remember that this award is for a **forward vision**, not a past performance. Applications close on 15th October 2003.

Pastoral Market Update

August, 2003

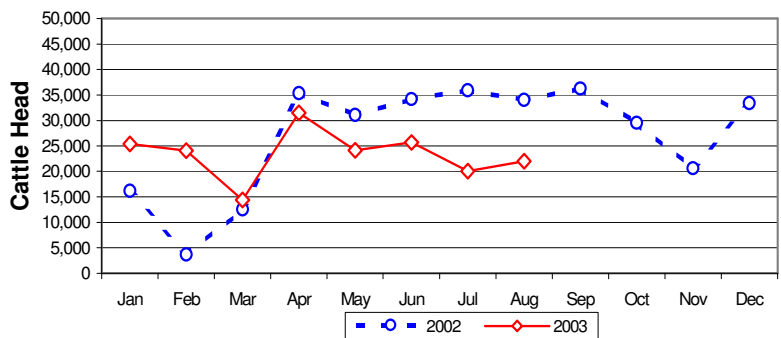
LIVE CATTLE EXPORTS VIA DARWIN PORT

Destination	Total Cattle (including interstate)							NT Cattle only						
	2001	2002	Last year 31.08.02	YTD 31.08.03	1-31 Aug	Previous Month	Difference	2001	2002	Last year 31.08.02	YTD 31.08.03	1-31 Aug	Previous Month	Difference
BRUNEI	16,155	19,085	11,785	11,126	0	783	-783	11,003	12,012	6,805	8,224	0	711	-711
EGYPT	52,692	10,873	7,135	0	0	0	0	30,376	10,873	7,135	0	0	0	0
INDONESIA	151,190	199,327	121,203	139,534	15,886	14,039	+1,847	121,632	133,763	87,275	104,228	13,782	13,782	0
PHILIPPINES	31,984	65,931	41,936	28,202	6,067	4,806	+1,261	25,701	52,692	32,612	23,838	5,388	4,638	+750
SABAH	110	318	198	224	0	0	0	110	17	0	224	0	0	0
SAUDI ARABIA	0	6,550	6,550	0	0	0	0	0	5,066	5,066	0	0	0	0
SARAWAK	0	1,033	0	320	0	0	0	0	846	0	92	0	0	0
VIETNAM	941	0	0	0	0	0	0	0	0	0	0	0	0	0
W-MALAYSIA	5,055	18,765	13,985	7,700	0	399	-399	4,350	13,839	10,692	5,727	0	399	-399
EAST TIMOR	0	32	32	0	0	0	0	0	0	0	0	0	0	0
JORDAN	0	688	0	0	0	0	0	0	688	0	0	0	0	0
TOTAL	258,127	322,602	202,824	187,106	21,953	20,027	+1,926	193,172	229,796	149,585	142,333	19,170	19,530	-360
				-15,718							-7,251			

"August at a glance"

- 21,953 head through the Port of Darwin during August. 1,926 head more than July but 12,039 less than August last year.
- Total live cattle exports through the Port of Darwin are now 15,718 head behind the same time last year.

Live Cattle Exports thru Port of Darwin
2002 v 2003



'OTHER' LIVESTOCK EXPORTS VIA DARWIN PORT (incl. NT and Interstate Stock)

Destination	Buffalo			Camels			Goats			Deer			Horses			Sheep			Pigs		
	2002	YTD 2003	1-31 Aug	2002	YTD 2003	1-31 Aug	2002	YTD 2003	1-31 Aug	2002	YTD 2003	1-31 Aug	2002	YTD 2003	1-31 Aug	2002	YTD 2003	1-31 Aug	2002	YTD 2003	1-31 Aug
BRUNEI	3,359	1,762	0	144	62	0	2,439	2,105	0	37	0	0	0	0	0	430	352	0	0	0	0
EAST TIMOR	0	0	0	0	0	0	0	0	0	0	0	0	0	0	0	0	0	0	0	0	0
W-MALAYSIA	173	32	0	609	145	0	7,182	6,436	0	0	0	0	4	0	0	1,573	625	0	0	0	0
SAUDI ARABIA	0	0	0	118	0	0	0	0	0	0	0	0	0	0	0	0	0	0	0	0	0
SARAWAK	57	0	0	64	100	0	225	239	0	0	60	0	0	0	0	0	0	0	0	0	0
PHILIPPINES	0	0	0	0	0	0	0	223	223	0	0	0	29	6	0	0	0	0	0	0	0
INDONESIA	0	0	0	0	0	0	0	25	9	0	0	0	11	1	0	0	0	0	0	0	0
THAILAND	0	0	0	0	0	0	0	0	0	320	0	0	0	0	0	0	0	0	0	0	0
TOTAL	3,589	1,794	0	935	307	0	9,846	9,028	232	357	60	0	44	7	0	2,003	977	0	686	0	0

CATTLE INDUSTRY SITUATION AND OUTLOOK

by

Valerie Hristova, Senior Economist
Department of Business, Industry &
Resource Development
Telephone: +61 8 89995093
E-mail: valerie.hristova@nt.gov.au

August 2003

1. AUSTRALIAN BEEF INDUSTRY

Australian saleyard prices for cattle averaged 258 c/kg dressed weight in 2002-03, a fall of 16% on the previous year. The decrease was mainly due to significantly higher slaughterings due to the drought, limited demand for restockers, especially in southern Australia, and decreased demand for Australian beef in the United States. Assuming sufficient rainfall to produce good pasture growth in the spring in southern areas, saleyard prices are forecast to average 9% higher in 2003-04 at 282 c/kg DW, driven by herd rebuilding.

The estimated size of the Australian cattle herd decreased to 26.7 million head in June 2003 as a result of increased slaughterings, due to the drought conditions that prevailed across much of Australia during the year. Beef and veal production increased although average slaughter weights for adult cattle fell. The forecast for 2003-04, dependent on climatic conditions, is some rebuilding of the cattle herd as pastoral conditions improve, resulting in fewer slaughterings and lower production of beef and veal.

Australian exports of beef and veal reached a high of 946,000 tonnes estimated shipped weight in 2002-03, with exports increasing on the previous year to both Japan and the Republic of Korea. The Japanese market showed some welcome recovery following the BSE (bovine spongiform encephalopathy or 'mad cow' disease) events of 2001-02, and sales to Korea continue to grow, along with the country's economic growth. Demand for Australian beef in the United States was well down in 2002-03, with exports to that market falling by 15% relative to the previous year. Weak demand from the United States for manufacturing beef due to their own drought, a stronger Australian dollar and the opening of the United States to Uruguayan beef were contributing factors.

The total value of beef exports decreased by some 7% to \$4.0 million, with the change in flow to lower-valued markets.

Per capita beef and veal consumption in Australia was estimated at 35.7 kg/head for 2002-03, a 9% increase on the previous year. Consumption is expected to decrease in 2003-04 as supplies of beef tighten and retail prices for beef and veal fall.

Total Australian live cattle exports are expected to reach a record 950,000 head in 2002-2003 due to increased availability of suitable cattle as a result of the drought. This is an increase of 19% on the previous year and comprises increased demand from Indonesia, Malaysia, Saudi Arabia and Brunei. However exports are forecast to ease in 2003-04 as the supply of cattle available for live export decreases with herd rebuilding and as cattle prices increase.

2. NORTHERN TERRITORY LIVE CATTLE TRADE

Both the total value and number of live cattle exported through the Port of Darwin increased in 2002-03. Numbers exported rose by 23% to 334,793 head. However, lower prices throughout the year resulted in the total value of cattle exported through Darwin increasing by only 5% to \$179.0 million.

Indonesia was the major destination for cattle exported through the Port of Darwin in 2002-03, taking 70% of all cattle, followed by the Philippines with 15%. Other destinations were Brunei (6%), Malaysia (5%), Egypt (3%), Saudi Arabia (1%) and Jordan (<1%). Indonesia imported 232,898 head through the Port of Darwin, an increase of 46% on the previous year. Cattle numbers to the Philippines increased slightly, by 2% to 48,786 while numbers to Egypt decreased by 67% to 10,873.

The number of Northern Territory cattle exported through the Port of Darwin in 2002-03 increased by 11% to 235,430. In addition Northern Territory cattle are exported through the Western Australian ports of Wyndham, Broome and Port Hedland.

Prices at Darwin for live export cattle were lower during the year, falling to \$1.30/kg live weight for steers in June 2003. The fall was mainly due to supply factors (high turnoff due to drought in eastern Australia and April to June being the main turnoff period for Territory cattle). Prices are expected to firm somewhat later in the year as supply diminishes.

The live export cattle trade is the main market for Territory cattle, taking 57% of turnoff in 2001-02. In addition to the export trade, 42% were turned off to interstate markets and 1% were slaughtered in Territory abattoirs.



Prepared by the NT Department of Business, Industry and Resource Development.

This publication contains commodity market information prepared for DBIRD staff use in strategic research and extension planning. While DBIRD exercise care in the compilation and preparation of this information, no responsibility is taken for its accuracy or for the completeness of any information that is reproduced from other sources. DBIRD denies any loss or damage to any person whether caused directly or indirectly by the use of any of the information provided.



To:

If undelieverd return to:
Dept of Business, Industry &
Resource Development
PO Box 159
TENNANT CREEK NT 0861