



Mitchell & District Landcare Association Inc.

Mitchell & District Landcare invites all current and prospective members to the Douglas Family Property

“Aqua Downs”, Morven, for a

# MULGA NUTRITION & FORAGE FIELD DAY

8:30am—4:30pm

FRIDAY, 27th OCTOBER, 2017

BYO Chair, Smokos & Lunch provided



**Desirée Jackson**  
Livestock Management Pty. Ltd.  
*Nutrition, Reproduction and Management Performance*

Guest Speakers: -

**Col Paton, EcoRich Grazing**

**Desiree Jackson, Desiree Jackson Livestock Management Pty Ltd**

**Rhonda Toms-Morgan, ConnectAg**



**EcoRich**  
GRAZING

## AGENDA

Land condition & forage budgeting for Mulga

Determining nutritional requirements of stock grazing Mulga and what are the primary limiting nutrients?

Property Tour of “Aqua Downs” Mulga management

Forage budgeting in Mulga

Pasture quality and diet quality. Dry matter intake and how we manage it. What do you feed? *(Bring in labels from any supplements you are currently feeding)*

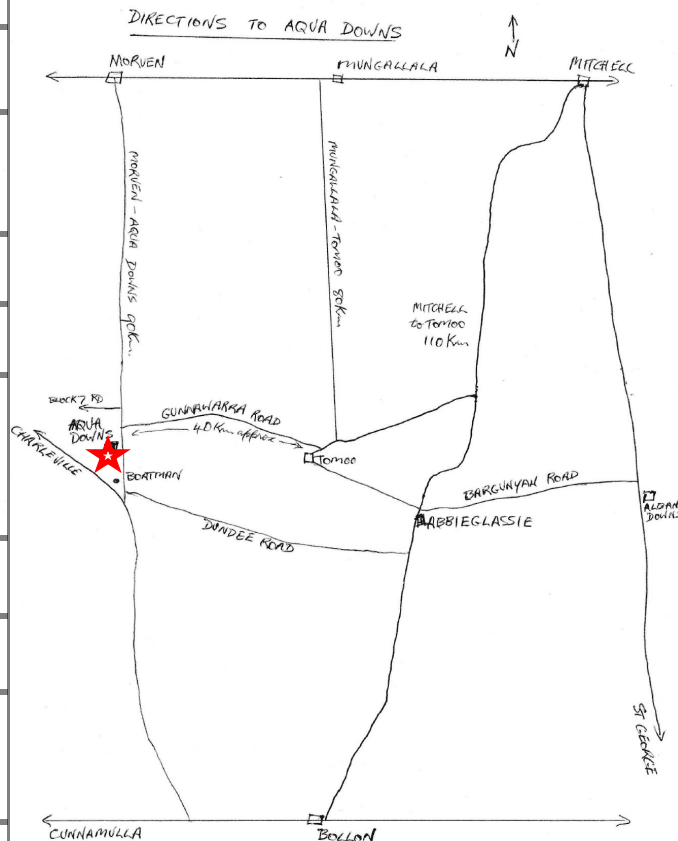
How to collect dung samples for NIRS analyses

Mitchell and District Landcare Association Inc AGM

Nutritional and supplementary requirements for stock on Mulga country – nutrient balance; differences between breeders and store cattle

Weaner nutrition – feeding programs for different weight groups

Opportunity to speak one on one with guest speakers about your current situation



RSVP by Wednesday, 25th October  
Rhonda Toms-Morgan  
Phone or Text 0407678574  
Email rhondatoms@bigpond.com

