

# The Long Paddock website: what's new, and it's all free!

## Webinar #1: "Getting the *Inside Edge* in grazing land management" series

Grant Stone for ***The Grazing Land Systems team***

[www.longpaddock.qld.gov.au](http://www.longpaddock.qld.gov.au)

Queensland Government

Site map Contact Us Help Search website

The Long Paddock

Home About Drought Declaration Drought & Climate Adaptation Southern Disasters State Seasonal Climate Outlook SILO AussieGRASS Rainfall/Pasture FORAGE Property Reports Climate Adaptation Rainfall Patterns

26 Sep, 2018  
Average G.S.I. index for the last 30 days  
6.86

Climate risk information for rural Queensland  
A Queensland Government initiative providing seasonal climate and pasture condition information to the grazing community

SILO AussieGRASS FORAGE Climate Adaptation

- *“Old to new”* Long Paddock website
- About us
- Drought and Climate Adaptation program
- Drought declaration + drought evolution
- SOI – Dashboard
- Seasonal Climate outlooks
- SILO climate data
- Grazing system models
- AussieGRASS maps and data
- FORAGE property Reports
- Climate Adaptation
- Rainfall Posters

# The “old ” Long Paddock website

Department of Environment and Science



Queensland Government

sitemap | contact us | help | Search

The Long Paddock

Home | Seasonal climate outlook | Rainfall and pasture growth | Drought | Our products | About us

A new beta version of the Long Paddock website is now available to view - [click here for a preview](#)

### Quick links

- Climate outlook
- Southern Oscillation Index
- Climate data
- AussieGRASS environmental calculator
- Climate science
- Climate change projections
- Climate Change Risk Management Matrix

### Features

1 2 3 4 5 6

#### Redeveloped Long Paddock - coming soon ...

Modernisation of The Long Paddock web site is a component of the Drought and Climate Adaptation Program (DCAP) initiative. This initiative includes formation of a Queensland Drought Mitigation Centre.

[Read more...](#)

A new 'beta' version of the Long Paddock website is available to view by clicking on the red banner above.

#### Latest Southern Oscillation Index (SOI) values

SOI values for 18 Sep 2017		Monthly average SOI values	
Average for last 30 days	5.11	June	9.45
Average for last 90 days	3.89	July	6.51
Daily contribution to SOI calculation	-1.42	August	3.50

[More SOI data >>](#)

### Latest maps

[Rainfall and pasture growth maps](#)

[Sea surface temperature variation](#)



## The Long Paddock

Home

About

Drought  
Declaration

Drought & Climate  
Adaptation

Southern  
Oscillation Index

Seasonal Climate  
Outlook

SILO

AussieGRASS  
Rainfall / Pasture

FORAGE Property  
Reports

Climate Adaptation

Rainfall Posters

26 Sep, 2018

Average SOI value for the last 30 days:

-6.86

## Climate risk information for rural Queensland

A Queensland Government initiative providing seasonal climate and pasture condition information to the grazing community

SILO

AussieGRASS

FORAGE

Climate Adaptation

Queensland Drought Mitigation  
Centre

**QDMC**

THE QUEENSLAND DROUGHT  
MITIGATION CENTRE

Drought

Southern Oscillation Index

Seasonal Climate Outlook

SILO

Home

About

Drought  
Declaration

Drought & Climate  
Adaptation

Southern  
Oscillation Index

Climate Outlooks  
& Weather

SILO

AussieGRASS  
Rainfall / Pasture

FORAGE  
Property Reports

Climate  
Adaptation

Rainfall Posters

## About Us

Useful Resources

Publications

[Home](#) / [About Us](#)

## About Us

The Long Paddock is a Queensland Government initiative that has provided climate and pasture information to the grazing community since 1995. With over 16,000 visits per month (on average), the site provides access to rainfall and pasture outlooks and decision support tools to support land management decision making and planning for land holders, education, consultants and extension officers.

In Australian bushlore, the national [stock route](#) network is euphemistically called the "long paddock" given its geographic extent - "the longest paddock in the world". In times of severe drought, some graziers take to droving to keep their livestock supplied with pasture, moving their livestock long distances along stock routes, sometimes across state boundaries. So "going on the long paddock" is an Australian way of mitigating drought risk, a unique adventure in its own right, and known for meeting with new people along the way. The Long Paddock website is operated by the Science Division of the Department of Environment and Science (DES) with support from the Department of Agriculture and Fisheries (DAF). For more information, please go to the [DES web site](#).





## The Drought and Climate Adaptation Program

[Current Projects \(Round 2\)](#)[Previous Projects \(Round 1\)](#)[Queensland Drought Mitigation Centre](#)[GrazingFutures](#)[Home](#) / [The Drought and Climate Adaptation Program](#)

## The Drought and Climate Adaptation Program

### About DCAP

The Drought and Climate Adaptation Program (DCAP) is an initiative to improve drought preparedness and resilience for Queensland producers. The program aims to do this by delivering a range of research, development and extension projects, improve seasonal forecasting and provide tools and systems that will support producers in their decision-making.

DCAP consists of a [number of projects](#) that are managed and funded through a series of partnerships with government and industry partners. The largest partnership is the establishment of the [Queensland Drought Mitigation Centre \(QDMC\)](#) with the University of Southern Queensland and the Department of Science, Information Technology and Innovation.

QDMC aims to improve seasonal forecasts for northern Australia, provide decision support tools for farm managers, and provide advice on climate change projections at regional level and how to adapt to the changing climate.

Another major component of DCAP is the [GrazingFutures](#) project that aims to help graziers in Western Queensland build resilience in their businesses and to recover from drought as quickly as possible.

DCAP will also fund other partnerships researching drought resilience, weather and seasonal forecasts, and mentoring programs led by other partners including Meat and Livestock Australia and the Bureau of Meteorology.

For a full list of DCAP research, development and extension projects, or for further information contact the department on 13 25 23 or email the DCAP program manager at [DCAP@daf.qld.gov.au](mailto:DCAP@daf.qld.gov.au).

### What's On

Find DCAP related events and workshops

[Future Beef](#)[Leading Sheep](#)

### DCAP news alerts

[Sign-up for alerts about the Drought and Climate Adaptation Program](#)

## Drought

### Drought Declarations

#### Further information on drought

#### ► Drought Declarations Archive

[Home](#) / [Drought](#) / Drought Declarations Archive

## Drought Declarations Archive

### Drought maps

### Drought declarations

Year

2018

Month

Sep

\*Day

19

\* Multiple declarations available on your selected month



Map - Colour (PNG234KB)

Last updated: 19 September 2018



Map - Shire & IDP List (PDF, 255KB)

Last updated: 19 September 2018



## QUEENSLAND DROUGHT SITUATION

As reviewed on 19 September 2018

23

FULLY DROUGHT-DECLARED LOCAL GOVERNMENT AREAS

5

PARTIALLY DROUGHT-DECLARED LOCAL GOVERNMENT AREAS

112

POTENTIALLY DROUGHT-DECLARED LOCAL GOVERNMENT AREAS

15

NOT DROUGHT-DECLARED LOCAL GOVERNMENT AREAS

THESE FIGURES REPRESENT

**58.1%**

OF THE LAND AREA OF QUEENSLAND

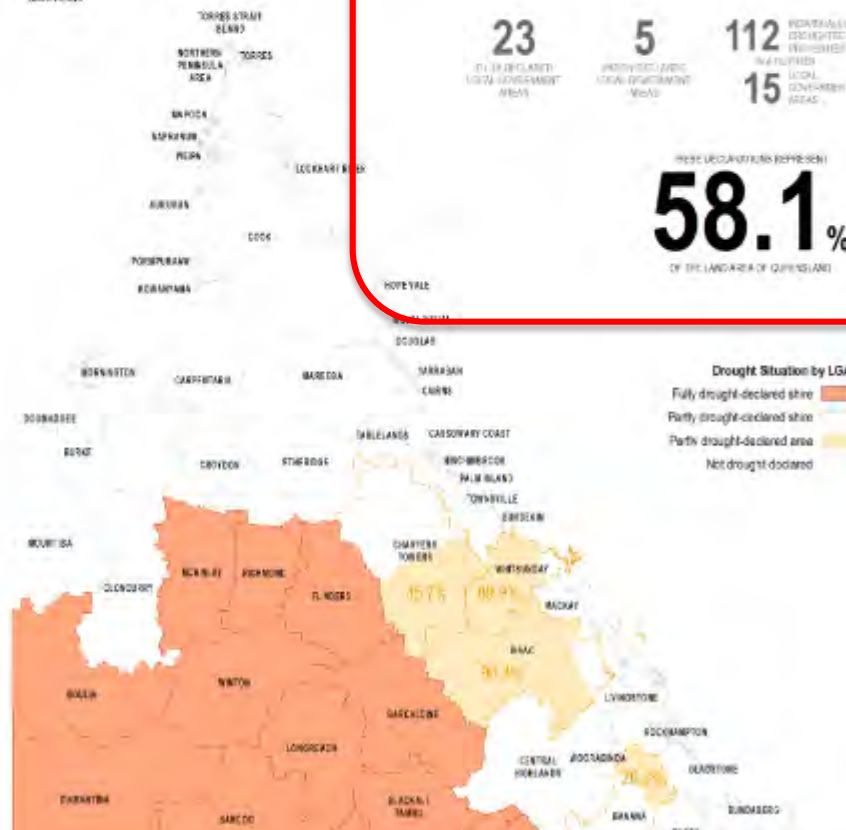
### Drought Situation by LGA

Fully drought-declared shire

Partly drought-declared shire

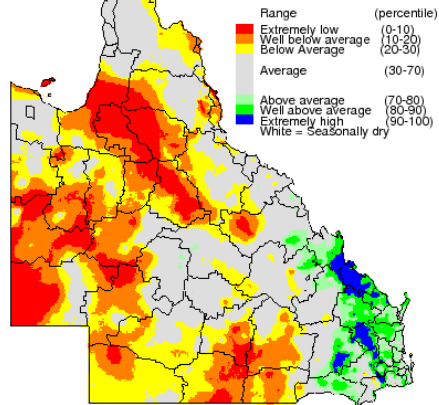
Partly drought-declared area

Not drought-declared



## 1yr Rain

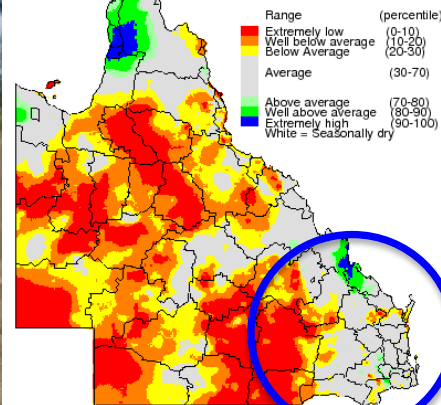
Rainfall Percentile  
April 2012 to March 2013



Map is Relative to Historical Records from 1890  
www.LongPaddock.qld.gov.au

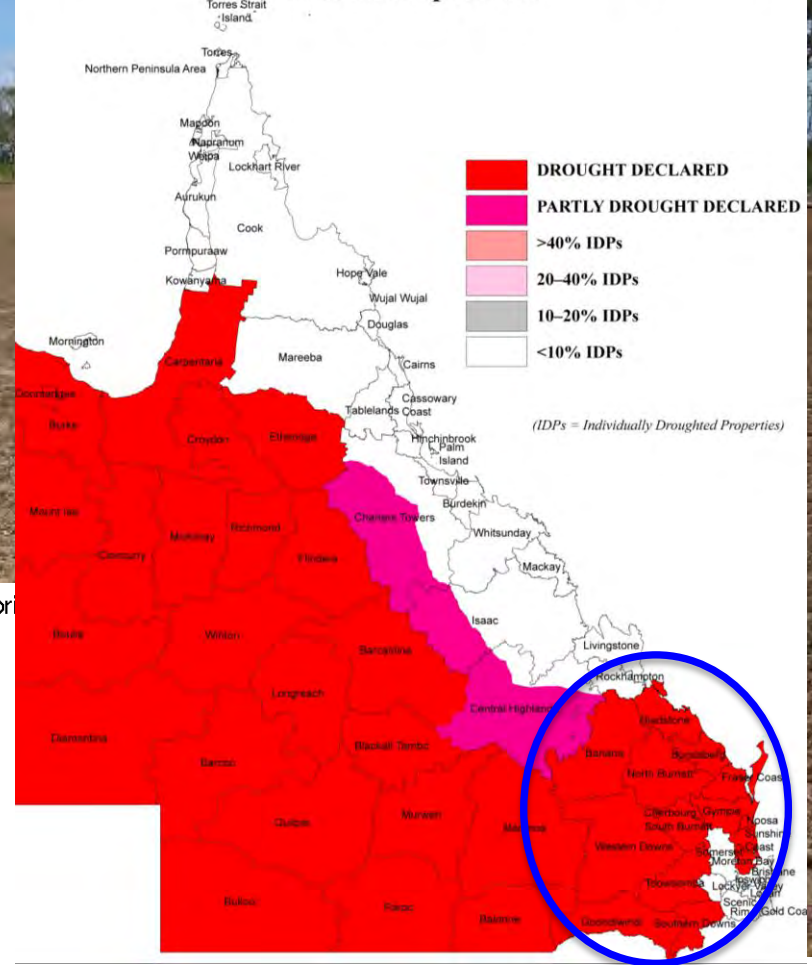
## 2yrs Rain

Rainfall Percentile  
April 2012 to March 2014



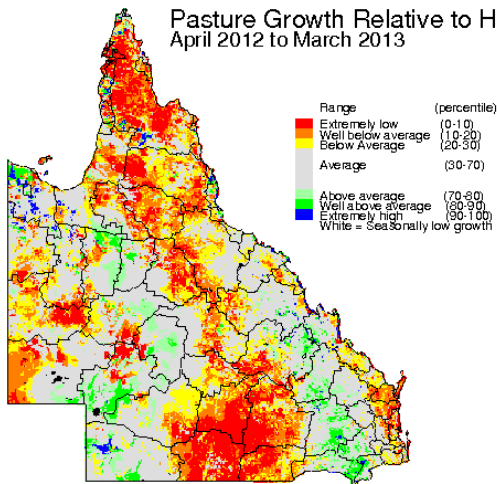
Map is Relative to Historical Records from 1890  
www.LongPaddock.qld.gov.au

## QUEENSLAND DROUGHT SITUATION as at 16th April 2014



## Failed Summer Growth

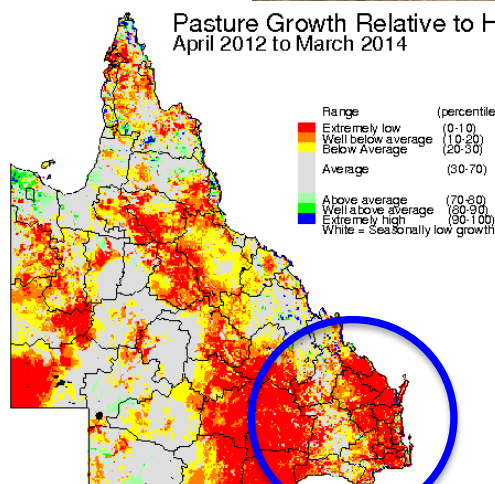
Pasture Growth Relative to Historic  
April 2012 to March 2013



www.LongPaddock.qld.gov.au

## 2 yrs Growth deficit

Pasture Growth Relative to Historic  
April 2012 to March 2014



www.LongPaddock.qld.gov.au



## SOI Dashboard

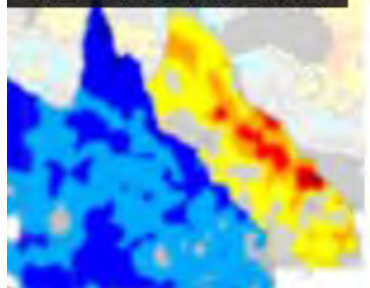
About

SOI Data Files

SOI Monthly Graphs



## Seasonal Climate Outlook



## Seasonal Climate Outlook

### About

### Monthly Climate Statements

### Rainfall Commentary

### Sea Surface Temperatures

### SOI Phase Rainfall Probabilities

[About SOI Phases](#)

### SPOTA-1 Reports

[About SPOTA-1](#)

[Papers and Presentations](#)

[Climate Tools Paper](#)

[Disclaimer](#)

Phase data updated 03:00pm, 02 Oct 2018, current for October 2018.

Latest phase: Consistently Near Zero

\*Phase

Consistently Near Zero

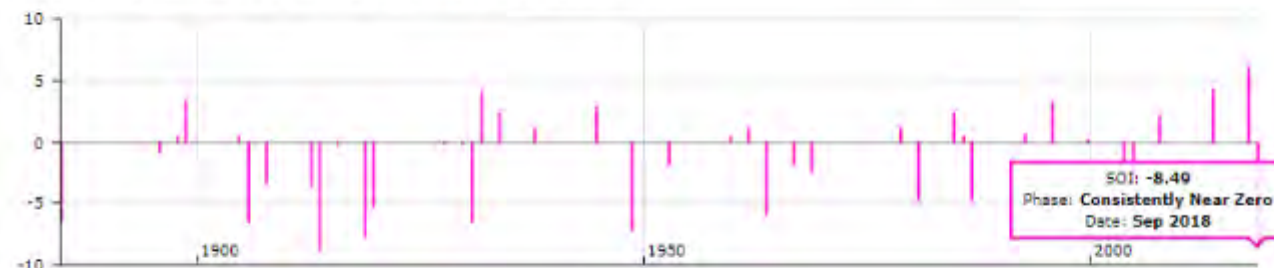
\*Month

Oct

\*Region

Australia

Years in history with the same SOI phase during August and September

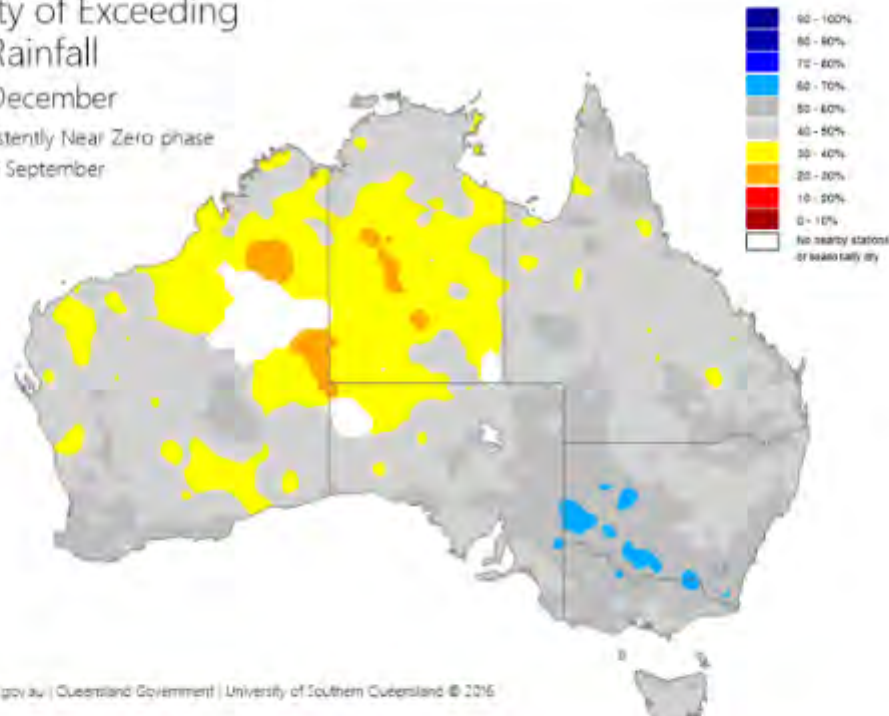


Chance of exceeding median rainfall in the period from October through December based on a consistently near zero SOI phase during August and September.

## Probability of Exceeding Median Rainfall

October / December

Based on Consistently Near Zero phase during August / September





SILO: Scientific information for land owners

[Log in](#) | [Register](#)

[Home](#) [About](#) [Request point data](#) [Gridded data](#) [API](#)

**SILO** is now available

<https://silo.longpaddock.qld.gov.au>

Request point data



Access gridded data



Learn about the API



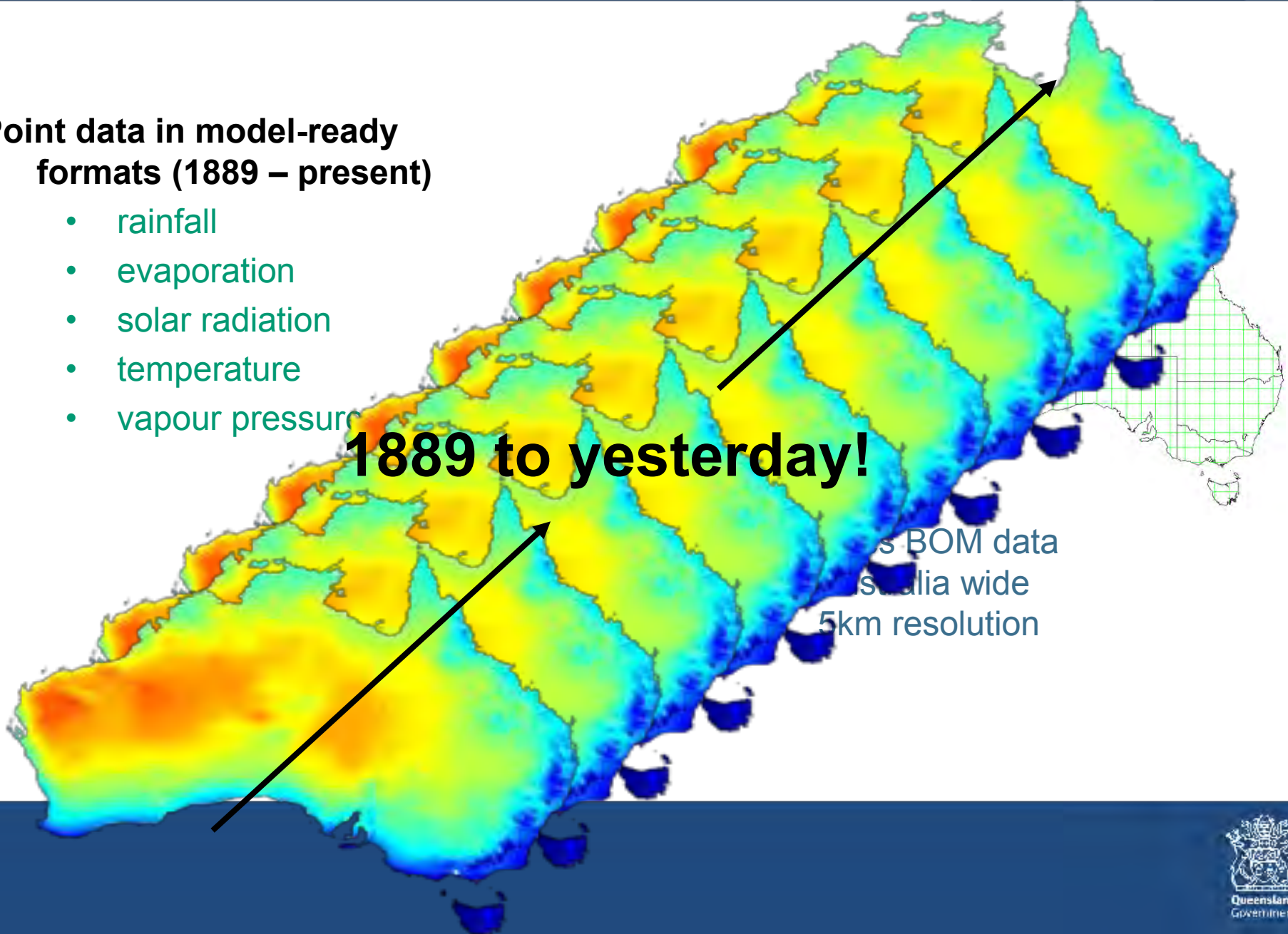


## Point data in model-ready formats (1889 – present)

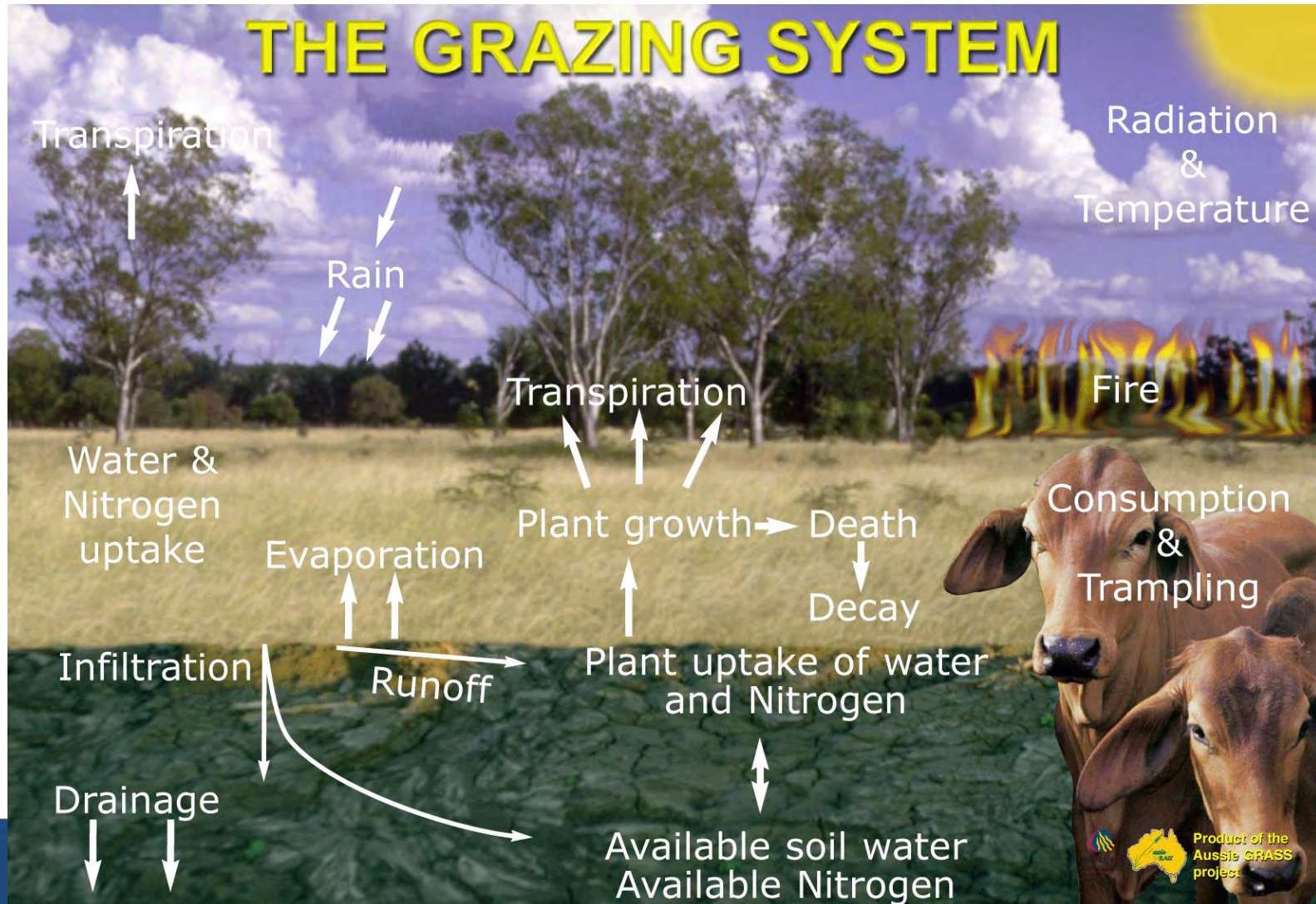
- rainfall
- evaporation
- solar radiation
- temperature
- vapour pressure

**1889 to yesterday!**

SILO BOM data  
Australia wide  
5km resolution



Aim: to combine major aspects of climate, pasture and grazing environment





Home

About

Drought Declaration

Drought & Climate Adaptation

Southern Oscillation Index

Seasonal Climate Outlook

SILO

AussieGRASS Rainfall / Pasture

FORAGE Property Reports

Climate Adaptation

Rainfall Posters

Australia

New South Wales

Northern Territory

Queensland

South Australia

Tasmania

Victoria

Western Australia

1 month

3 months

6 months

12 months

24 months

36 months

AussieGRASS

Home

AussieGRASS

AussieGRASS

Rainfall and pasture growth maps

Time series graphs

RegionAustralia

Map TypesPasture Growth Seasonal Probability

Duration3 months

End onDec2018

Files download

Maps (GIF, 28KB)

Maps (PDF, 152KB)

GIS file (ZIP, 140KB)

Chance of Exceeding Median Growth  
October to December 2018

www.LongPaddock.qld.gov.au

Rainfall Relative

Rainfall Total

Forecast Curing Anomaly

Pasture Curing Index

Pasture Grass Fire Risk

Potential Flow To Stream Seasonal Probability

Potential Flow To Stream Relative

2018

2018

2017

2016

2015

2014

2013

2012

AussieGRASS



## AussieGRASS

Rainfall and pasture growth maps

State

Queensland

Region

☒ Shire / LGA☒ Sub-IBRA

Shire / LGA

Carpentaria Shire

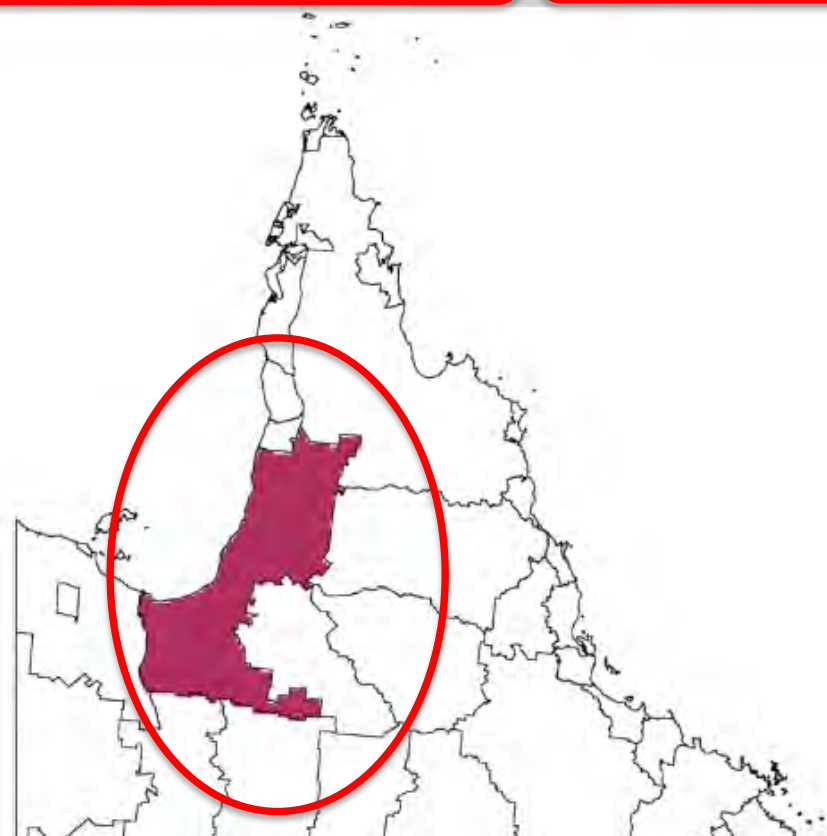
Files download:

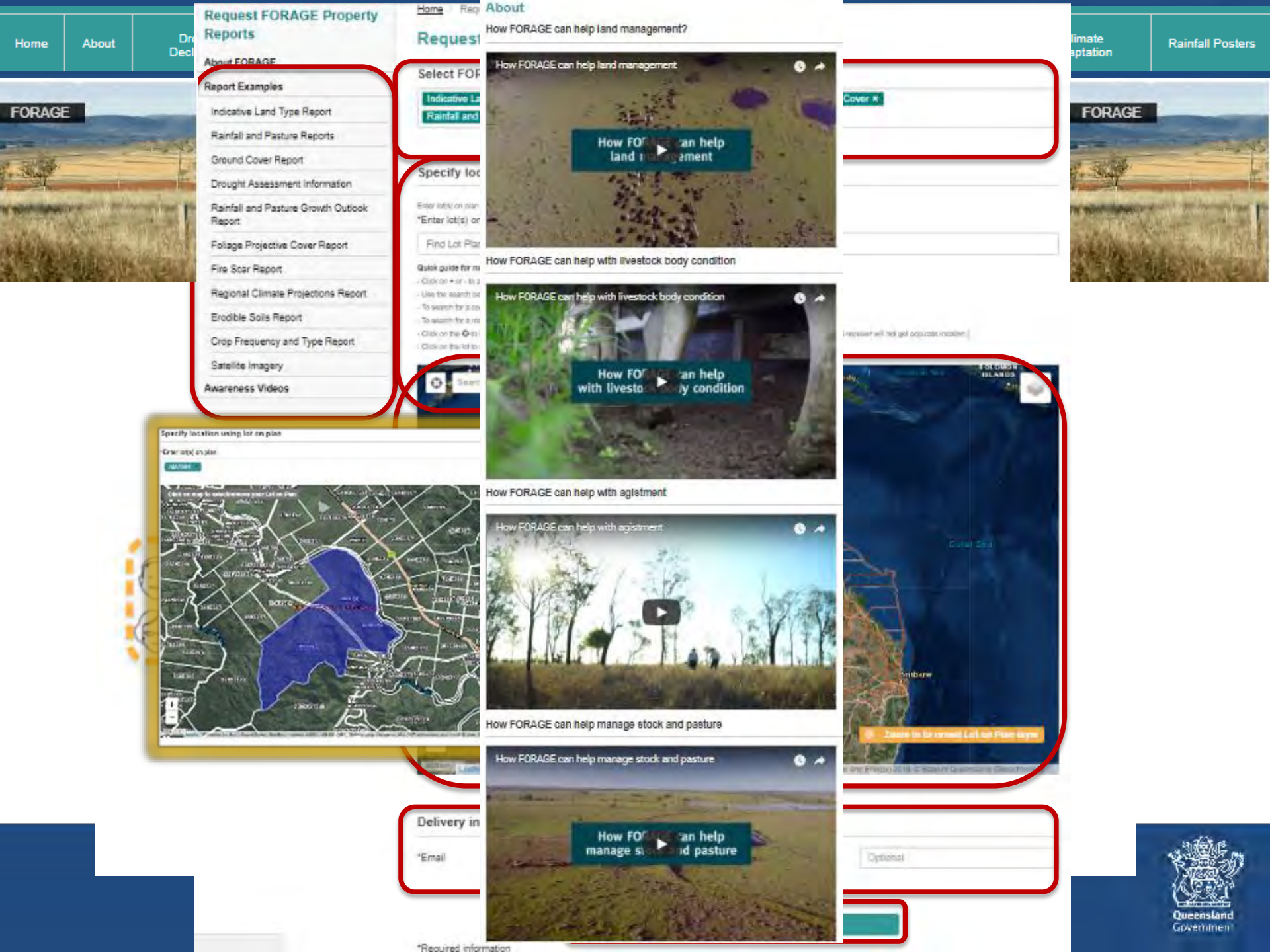


Time series graphs (PDF, 187KB)  
Last updated: 7 October 2018



Data file (TXT, 252KB)  
Last updated: 7 October 2018





Home

About

Request

# Request FORAGE Property Reports

## About FORAGE

### Report Examples

- Indicative Land Type Report
- Rainfall and Pasture Reports
- Ground Cover Report
- Drought Assessment Information
- Rainfall and Pasture Growth Outlook Report
- Foliage Projective Cover Report
- Fire Scar Report
- Regional Climate Projections Report
- Erodible Soils Report
- Crop Frequency and Type Report
- Satellite Imagery
- Awareness Videos

Home

## Request

How FORAGE can help land management?

### Select FORAGE

- Indicative Land Type Report
- Rainfall and Pasture Reports

### Specify location

Enter lot(s) on plan  
 \*Enter lot(s) on plan  
 Find Lot Plan

Quick guide for use  
 - Click on + or - to expand/collapse  
 - Use the search bar to search for a lot  
 - Click on the lot(s) you want to view  
 - Click on the lot(s) you want to view

Search



How FORAGE can help with livestock body condition



How FORAGE can help with agistment



How FORAGE can help manage stock and pasture



### Delivery information

\*Email

\*Required information

Climate adaptation

Rainfall Posters

## FORAGE



Cover

Intelligence will not get accurate location



Optional









Queensland Future Climate Dashboard

More...

Mean Climate

Heatwaves

Extreme temperature indices

Extreme precipitation indices

SPI-drought indices

SPI-flood indices

Queensland's climate is highly variable in space and time, ranging from tropical wet to arid in space and from extremely wet to extremely dry over time. Understanding how our future climate and variability is subject to changes is crucial for adaptation and preparedness.

Region:

Variable:

Local Government Areas

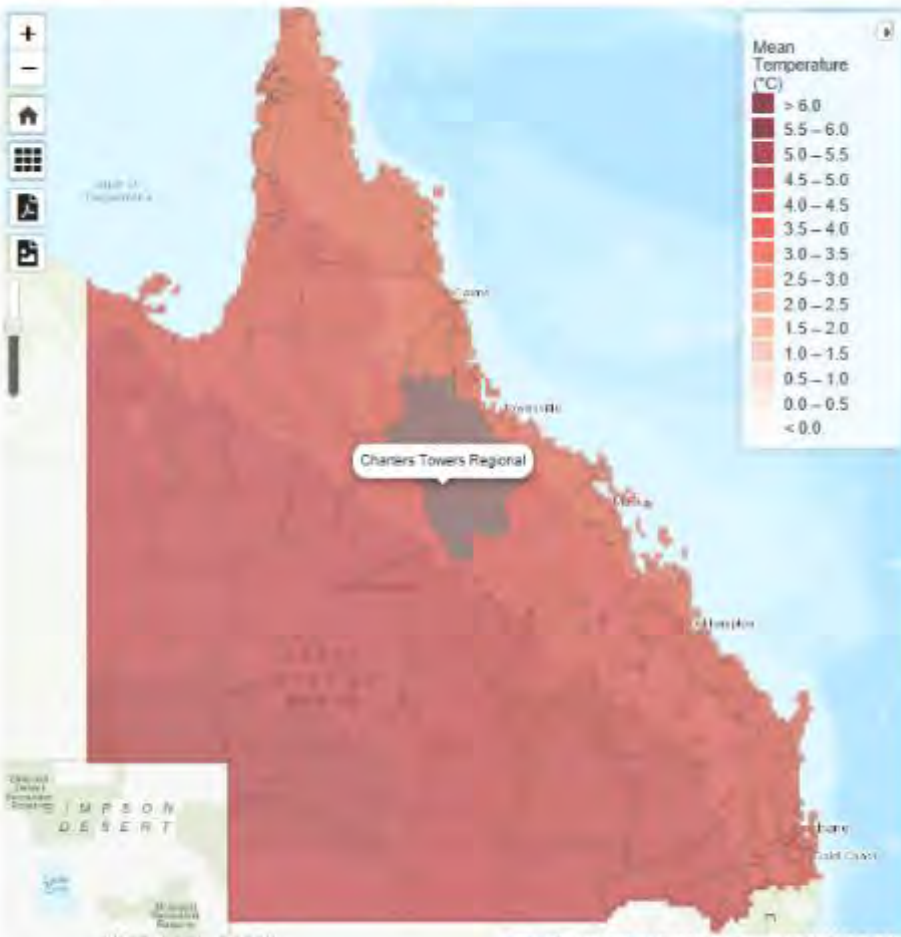
Mean Temperature

Season:

Year:

Annual

2090



Local Government Areas

Old

ON

Mean

ON

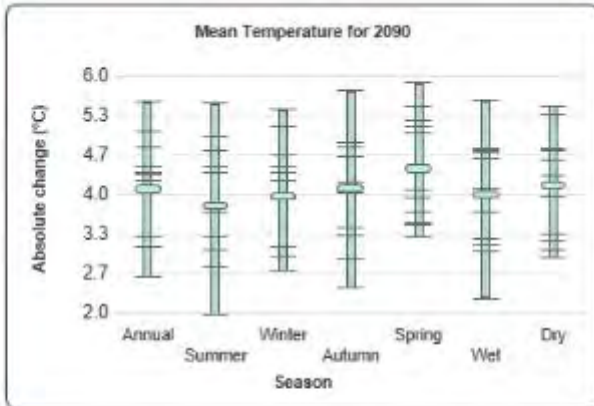
Range

ON

Models

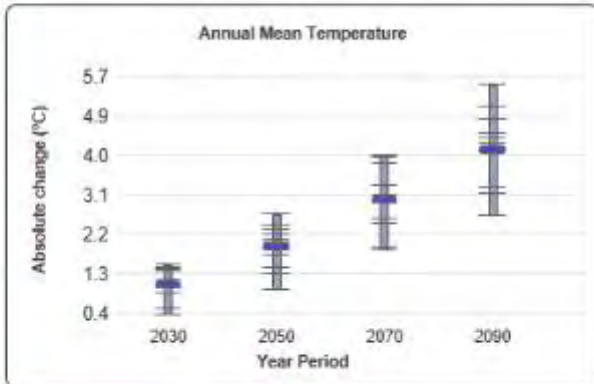
Changes across seasons for Queensland

Long-term state-wide changes in relation to reference period (1986-2005) across seasons



Changes over time for Queensland

Long-term state-wide changes in relation to reference period (1986-2005) over time



## Australia's Variable Rainfall

[ENSO year classification](#)[Classification Documentation](#)[Home](#) / [Australia's Variable Rainfall](#)

## Australia's Variable Rainfall

### Posters showing inter-annual (April to March) rainfall variability for Australia

This version of Australia's Variable Rainfall Poster depicts twelve monthly rainfall (April-March) in maps for the years 1890 through to 2018 alongside a graph of Southern Oscillation Index and Inter-decadal Pacific Oscillation values.

[Australia's Variable Rainfall poster \(1890 – 2018\) \(PDF\)](#)

Note: This poster replaces previous versions that covered periods 1900 to 1997, 1890 to 2004, 1890 to 2013 and 1890 to 2015. The April to March period best captures ENSO periods and is useful in most areas of the country.

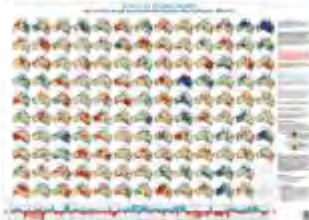
- Maps for updating the previous versions of the posters. This update contains maps for years (2016/17 and 2017/18) for all posters and can be used to extend your current A4 printed posters to 2017/18. (PDF)

### Rainfall Poster Map App

[Open the Rainfall Poster Map App](#)

## Poster Series

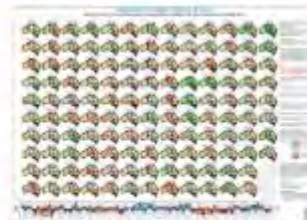
### Australia's Variable Rainfall poster

[Download PDF Poster](#)

### Queensland's Extended Wet and Dry Periods

[Download PDF Poster](#)

### Australia's Modelled Pasture Growth

[Download PDF Poster](#)

### Australia's Variable Rainfall with Tropical cyclone tracks

[Download PDF Poster](#)



**Long Paddock offers a diverse range of climate and pasture information for grazing land management – past, present and future.**

**Next in the “*Getting the Inside Edge*” webinar series:**

- Our rainfall and pasture growth – comparing current seasons with the past (Thurs 25<sup>th</sup> Oct)
- FORAGE – free property information to assist with grazing land management decisions:
  - Part 1 – currently available information (Thurs 15<sup>th</sup> Nov)
  - Part 2 – new and soon to be released information (Thurs 29<sup>th</sup> Nov)

**Questions and suggestions** - email The Long Paddock team at [longpaddock@qld.gov.au](mailto:longpaddock@qld.gov.au)

**[www.longpaddock.qld.gov.au](http://www.longpaddock.qld.gov.au)**

