

# Vegetation Management in Queensland

Helping landowners understand what is legally required when deciding to  
clear native vegetation.

Note that this presentation is tailored to South West QLD

## Today's key points

- Vegetation changes
- Fodder Harvesting
- Managing thickened vegetation
- Mapping and PMAVs
- Monitoring and Compliance
- Where to go for more information
- Tools to help

# Vegetation Management Laws

- Today's focus - the management of Queensland's vegetation:
  - *Vegetation Management Act 1999*
  - *Planning Act 2016*

# Vegetation Management Law Changes

Big Changes for out here:

- SAC for Managing Thickened Vegetation is gone. Now need a permit.
- Some fodder code changes.
- High value regrowth vegetation (Category C) on freehold (if you didn't have a PMAV).
- Redefine high value regrowth vegetation (VMA) – *from introduction*
  - native vegetation that has not been cleared in the last 15 years – and a regional ecosystem.
  - Leasehold, freehold and indigenous land and occupational licences (new tenure)

# Vegetation Management Laws

## Other Changes:

- Increased habitat and environmental protection
  - Essential habitat to include near-threatened wildfire in addition to endangered and vulnerable wildlife
- Remove provisions permitting clearing for high value agriculture (HVA) and
- Irrigated high value agriculture (IHVA) – *from introduction*
- Some scope for coordinated projects (Agricultural projects of State significance)
- Monitoring and Compliance
  - Penalty units increased for offences
  - Size of area change for PINS
  - Expanding powers of entry

# Vegetation Management Law Changes

- Expand regulation of vegetation along watercourses and drainage features in the Burnett Mary, Eastern Cape York and Fitzroy Great Barrier Reef catchments (VMA) – **from introduction**
- Category R areas will be regulated in the following catchments
  - Burnett Mary (new)
  - Eastern Cape York (new)
  - Fitzroy (new)
  - Burdekin (existing)
  - Mackay Whitsunday (existing)
  - Wet tropics (existing)
- If you are North of Roma, check.



# PMAVs and Mapping

- PMAVs are fine. It's the main layer of mapping in the veg laws.
- PMAVs applied for after the 8<sup>th</sup> March may have Cat C and Cat R on Freehold land.
- Landholders who are contesting Cat C are one of the priorities of the Charleville office.
- Some RE's have been re-classified (6.5.2).

# Fodder & Thinning

## Fodder harvesting:

- 500 ha/ notification. Can notify multiple times but need to complete a self audit.
- Strip width maximum now 50m & retain 75m
- Check your Supporting Map for RE's
- Can still self assess RE type but use caution.

## Thinning:

- There is no thinning SAC any more.
- Look at SDAP, apply through SARA
- <https://planning.dsdmip.qld.gov.au/planning/better-development/the-development-assessment-process/the-states-role/state-development-assessment-provisions>



https://planning.dsdmip.qld.gov.au/planning/better-development/the-development Job search | Employment and j... State Development Assess...

Our planning system Better planning Better development Regional Planning Interests Act SPA system Resources Online tools and services

Home / Better development / The development assessment process / State's role in development assessment / State Development Assessment Provisions (SDAP)

Types of assessment

The development assessment process

State's role in development assessment

SARA decisions

State Development Assessment Provisions (SDAP)

The DA Rules

Lodging a development application

Application forms and templates

Get involved with development

Offences and enforcement

Ministerial call-ins

Regional Planning Interests Act

SPA system

Resources

This 3:42 minute video explains the role of SDAP.

When submitting a development application to SARA, you should show how your application complies with the applicable state codes in SDAP. Appendix 1 of SDAP will help you identify which state codes you may need to address as part of your development application.

## Using versions of SDAP

SDAP is updated from time to time to reflect legislative and policy changes. The table below lists the current and past versions of SDAP.

The current SDAP, as well as [state code response templates](#) for applicants to complete and include with their development application, are available through the Resources page of this website.

Should you require copies of older SDAP materials not available on this website, please contact [saraplanningsupport@dsdmip.qld.gov.au](mailto:saraplanningsupport@dsdmip.qld.gov.au).

Note that, where possible, new versions of SDAP are typically published for information purposes two weeks before they commence. Applicants should address the current version of SDAP (i.e. the version that has commenced) at the time of submitting their application to the assessment manager.

SDAP version	Date of publication	Date of commencement
<b>SDAP version 2.3</b>  The changes culminating in SDAP version 2.3 are largely to complement changes to the <i>Vegetation Management Act 1999</i> (VMA), following assent of Vegetation Management and Other Legislation Amendment (VMOLA) Bill on 9 May 2018. The main changes to note are: <ul style="list-style-type: none"> <li>Removal of provisions relating to clearing for 'high value agricultural clearing' and 'irrigated high value agricultural clearing' in State code 16: Native vegetation clearing.</li> <li>Throughout State Code 16 – the term 'thinning' has been replaced with the term 'managing thickened vegetation'.</li> </ul> Other minor amendments have been made to better clarify provisions and update references and definitions to reflect new guidance material and content.  <a href="#">Download a complete version of SDAP v2.3</a>  <a href="#">Download the introductory sections of SDAP 2.3</a>  <a href="#">Download the state codes</a>	18 June 2018	2 July 2018
<a href="#">SDAP version 2.2</a>	9 March 2018	9 March 2018

https://dlilgpprd.blob.core.windows.net/general/sdap-v2-3.pdf

2:47 PM 9/07/2018

# Where to start?

Request a  
personalised  
property  
report.

- Provides detailed vegetation information and maps specific to your property



Like more information? Call 135VEG (13 58 34),  
email [vegetation@dnrme.qld.gov.au](mailto:vegetation@dnrme.qld.gov.au) or visit [www.qld.gov.au](http://www.qld.gov.au)

# Vegetation Maps

- Maps are included in the property report.

Regulated Vegetation  
Management map (RVM)

Vegetation Management  
Supporting map










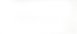
Protected Plants Flora  
Survey Trigger map

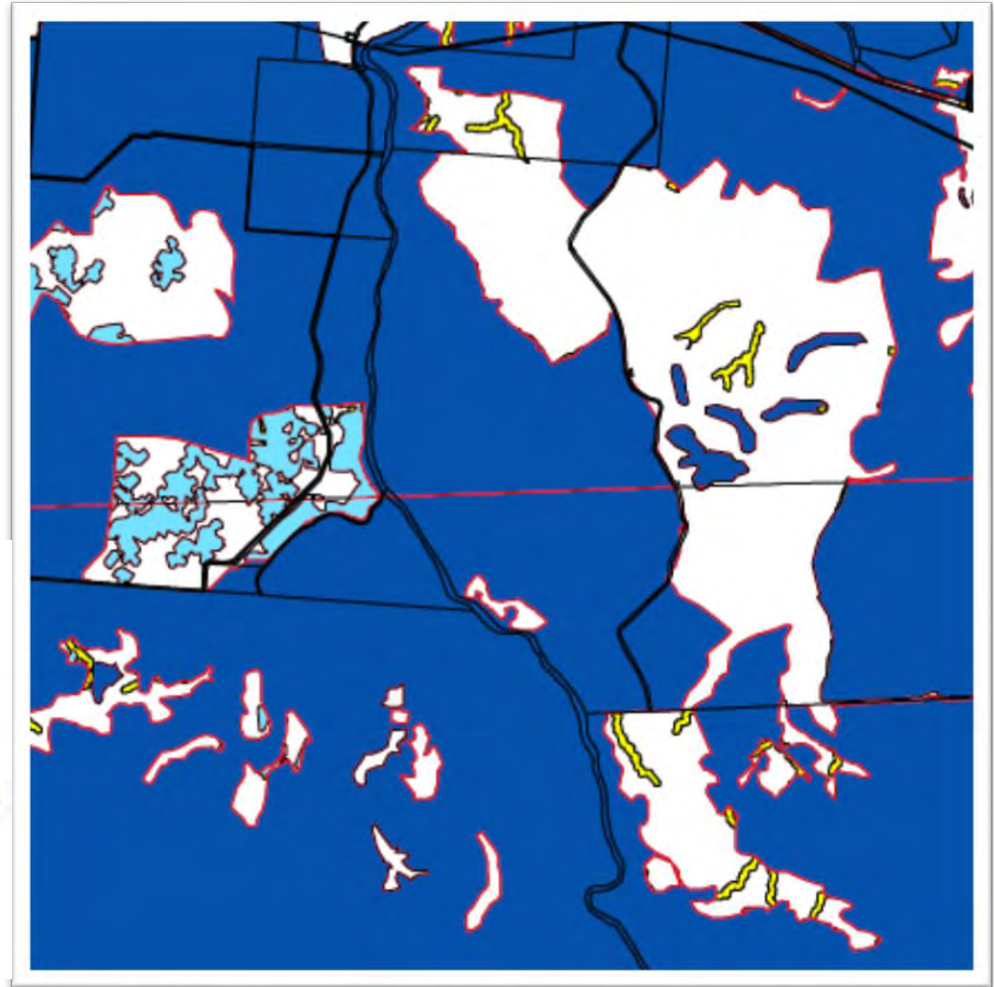
Property Map of  
Assessable Vegetation  
(PMAV)

# Regulated Vegetation Management map (RVM)

- Vegetation Categories
  - Category A - Red
  - Category B - Blue
  - Category C - Light blue
  - Category R - Red
  - Category X - White

## Legend

-  Lot and Plan
-  Category A area (Vegetation offsets/compliance notices/VDecs)
-  Category B area (Remnant vegetation)
-  Category C area (High-value regrowth vegetation)
-  Category R area (Reef regrowth watercourse vegetation)
-  Category X area (Legally cleared areas that have not reached regrowth status)
-  Water
-  Area not categorised
-  Cadastral line
-  Property boundaries shown are provided as a locational aid only




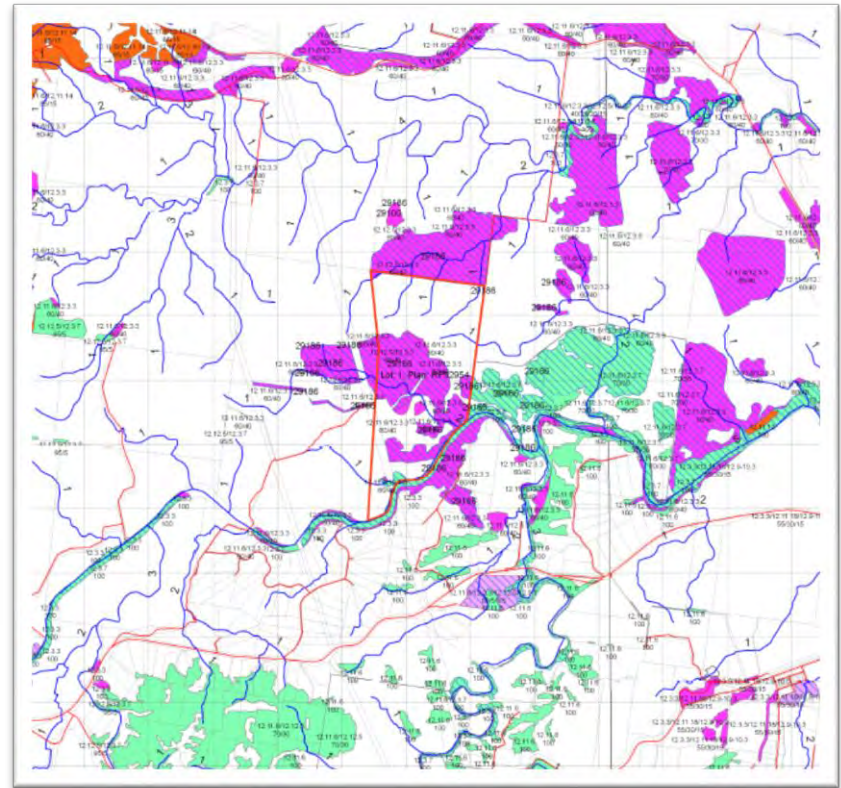


# Vegetation Management Supporting map

- Regional ecosystems
- Essential habitat
- Watercourses
- Wetlands

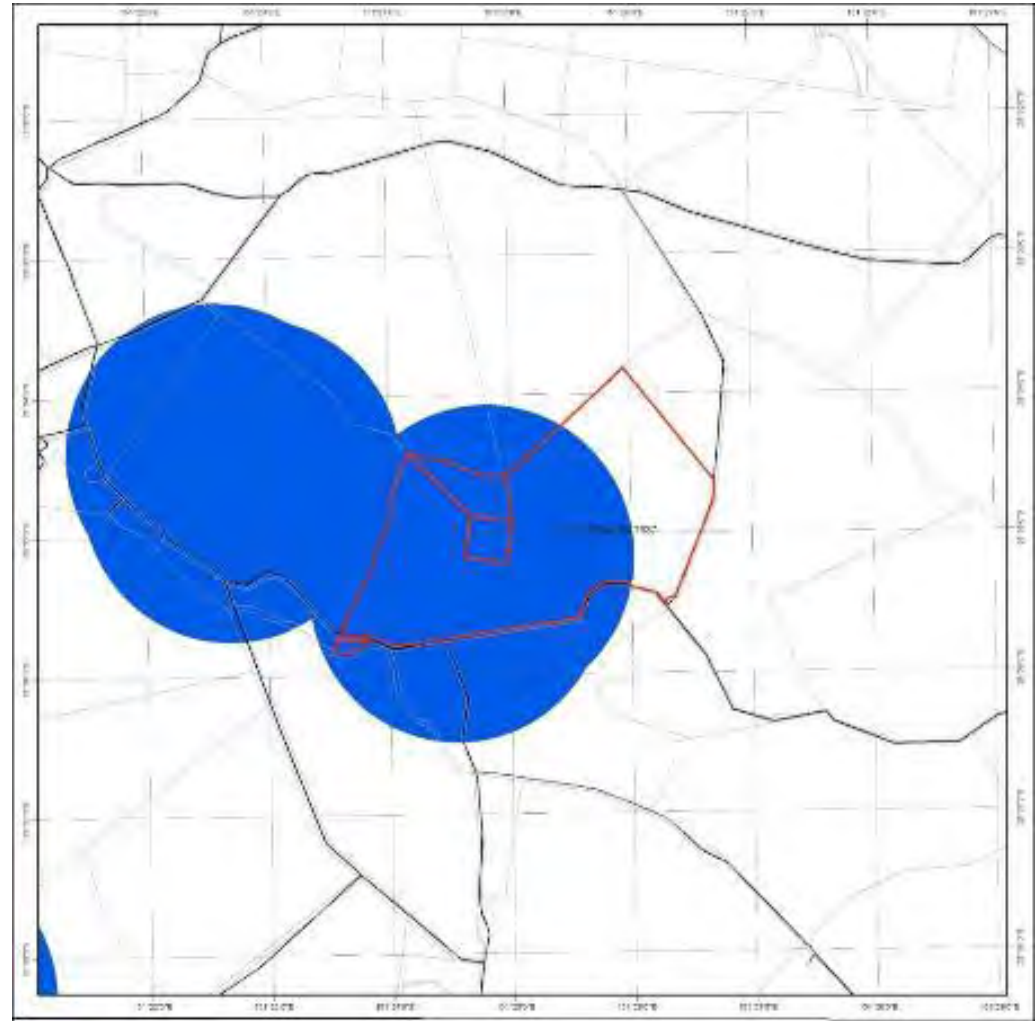
## Legend

-  Lot and Plan
-  Category A or B area containing endangered regional ecosystems
-  Category A or B area containing of concern regional ecosystems
-  Category A or B area that is a least concern regional ecosystem
-  Category A or B area under Section 20AH  
These areas are edged in yellow and filled with the remnant RE Status
-  Category C area containing endangered regional ecosystems
-  Category C area containing of concern regional ecosystems
-  Category C area that is a least concern regional ecosystem
-  Category C area under Section 20AI  
These areas are edged in purple and filled with the remnant RE Status
-  Non Remnant
-  Water
-  Wetland on the vegetation management wetlands map
-  Essential habitat on the essential habitat map
-  Essential habitat species record
-  Watercourses and drainage features on the vegetation management watercourse and drainage features map  
(Stream order shown as black number against stream where available)
-  Roads
-  National Parks, State Forest and other reserves
-  Cadastral line  
Property boundaries shown are provided as a locational aid only



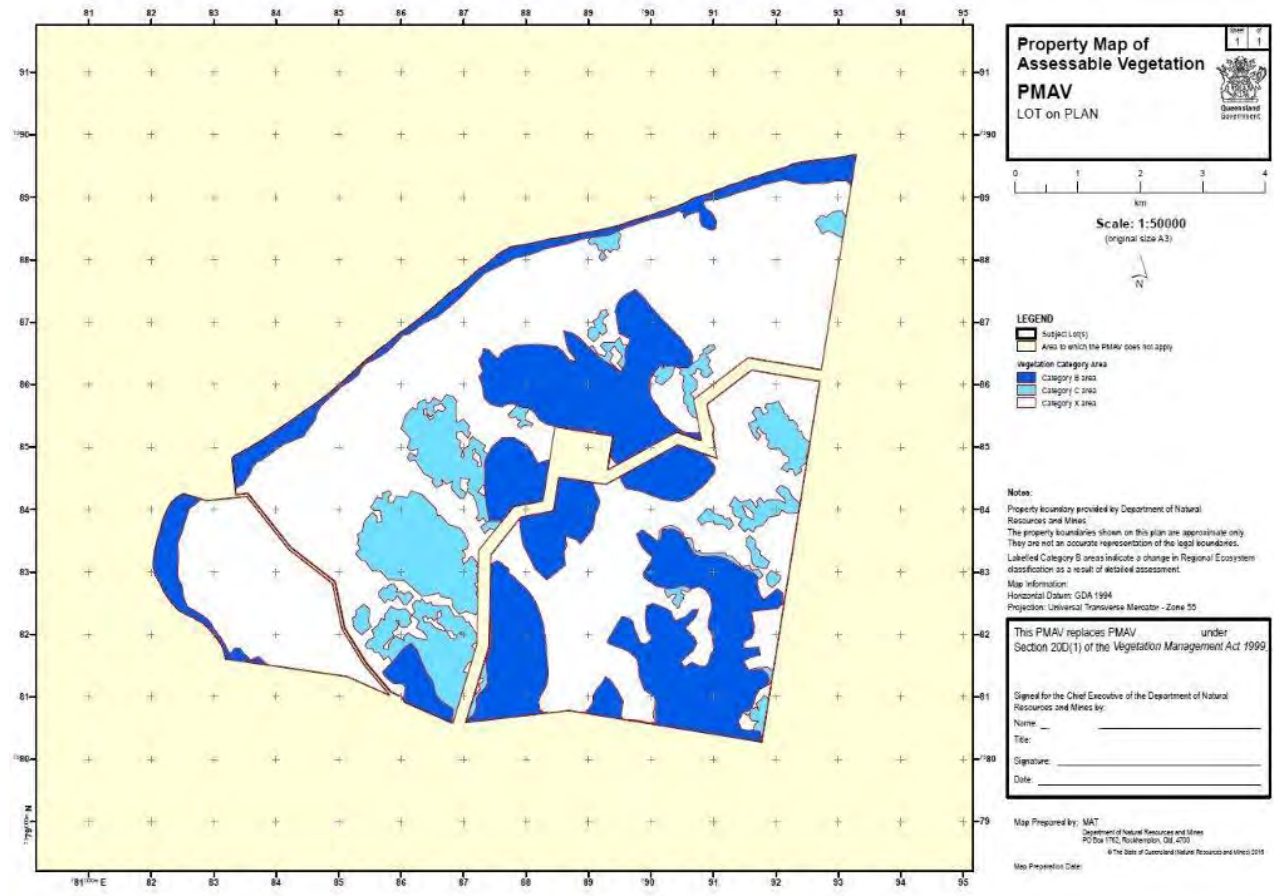
# Protected Plants Flora Survey Trigger map

- To determine if the clearing is within a high-risk area.
- For further information or assistance about protected plants contact the Department of Environment and Science:
  - [palm@des.qld.gov.au](mailto:palm@des.qld.gov.au)
  - 1300 130 372
  - [www.ehp.qld.gov.au](http://www.ehp.qld.gov.au).



# Property Map of Assessable Vegetation (PMAV)

PMAVs are the first point of truth



# Your next step



Check which  
clearing  
option  
applies to  
your  
property.

Exempt clearing work

Accepted development  
vegetation clearing code

Area Management Plan  
(AMP)

Development permit



# Other Tools:

<https://qldglobe.information.qld.gov.au/>



Queensland Parliament x Queensland Globe x

https://qldglobe.information.qld.gov.au

Queensland Government

Queensland Globe

Topics

Search

Layers

Places

Maps

Print

Help

int: 21170  
lon: 122.88785  
2D 3D

Topics

All Topics Featured

13 Topics

Sort By

360/3D

Agriculture

Construction

Resources

Tourism

Transport and motoring

360 Woolloongabba

360 Woolloongabba gives you the opportunity to explore the new feature of 360 mode. For the first time in Queensland...

Berlin 3D city model

A 3D environment for the location of Berlin, Germany.

Carmichael mine and rail project

Once complete, the \$22 billion Carmichael coal mine and rail project will be Australia's largest coal mine with the...

Show topics on startup

Queensland Government

Queensland Parliament

Queensland Globe

https://qldglobe.information.qld.gov.au

Search

Queensland Government

Queensland Globe

Log in or Sign Up

Topics

Search

Layers

Places

Maps

Print

Help

lat: -21.1710  
long: 122.88795  
2D 3D

Topics

All TopicsFeatured

1 Topic

Sort By

360/3D>

Agriculture>

Construction>

Resources>

Tourism>

Transport and motoring>

Vegetation management

This topic contains mapping products that assist you to work through the vegetation management framework. It details...

Agriculture 2D

Launch

Show topics on startup



Queensland Parliament

Queensland Globe



+

← → ↺ 🏠

🔒 <https://qldglobe.information.qld.gov.au>

⋮ 📧 ☆ 🔍 Search

🏠 📄 ☰



Topics

Search

Layers

Places

Maps

Print

Help

lat: -21.710  
long: 122.88785

2D 3D

How would you like to load this topic?

☒ Apply topic's map position

ADD TO GLOBE

REPLACE CURRENT TOPIC

Topics

×

←

×

How would you like to load this topic?

☒ Apply topic's map position

ADD TO GLOBE

REPLACE CURRENT TOPIC





 Queensland Government







 Edit layers

Add layers 

All Layers ▾

RVM category R - reef-regrowth watercourse vegetation

RVM category X - vegetation not regulated under the VMA

RVM area not categorised

Vegetation management  
regional ecosystem map  
labels

Category A or B area  
containing endangered  
regional ecosystems

Category A or B area  
containing of concern  
regional ecosystems

LAYER OPACITY 39%

## Metadata

### Query layer attributes

Zoom to layer extent

Make this the only visible layer

Category: A or B area that is  v

lat: -26.97103  
long: 147.24237

2D	3D	360
----	----	-----

material © CNES reproduced under licence from Airbus DS, all rights reserved. © 21AT © Earth-i, all rights reserved, 2018. © State of Queensland (Department of Natural Resources, Mines and Energy), 2018. © State of Queensland (Department o... Powered by Esri







<https://qldglobe.information.qld.gov.au/#>

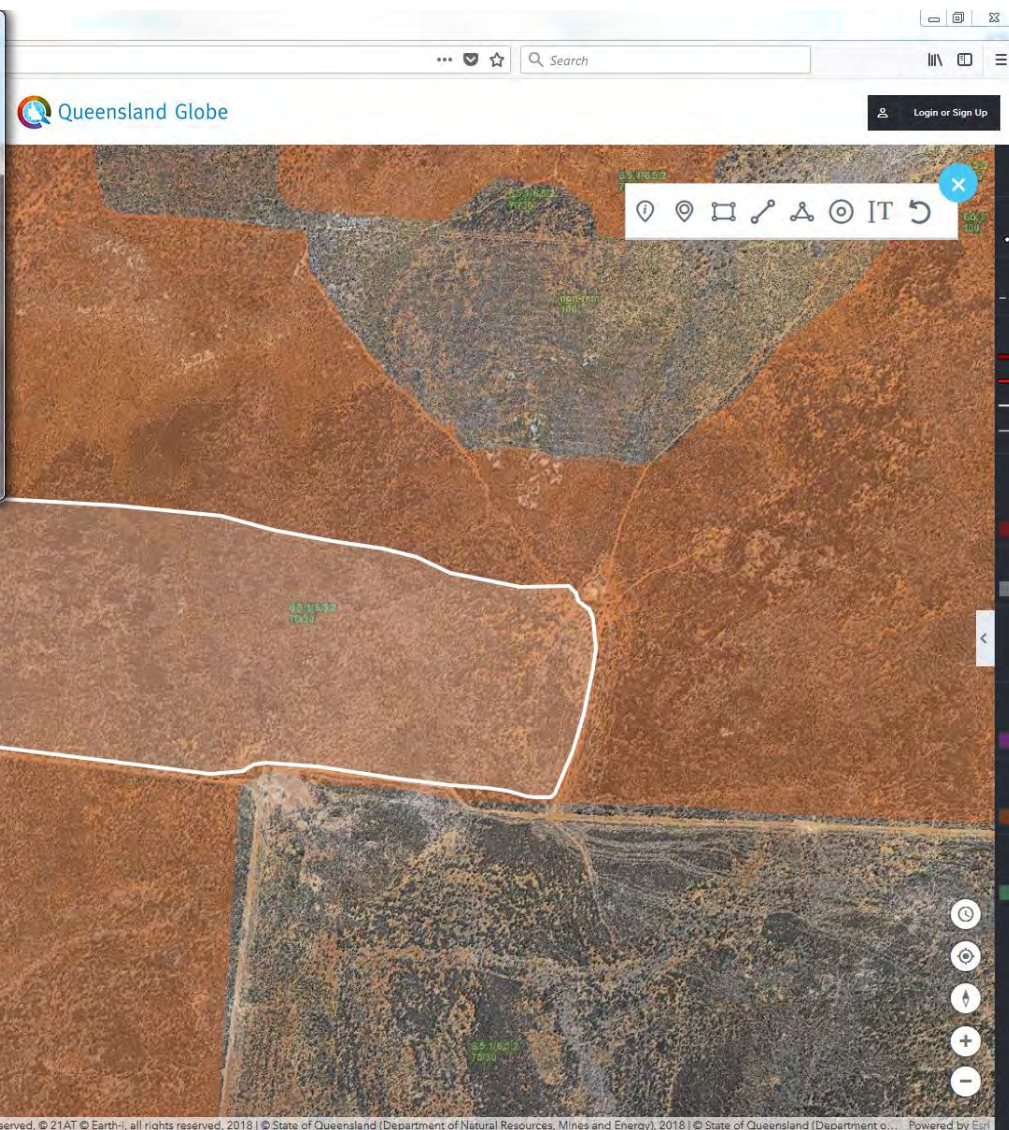












# Compliance and Monitoring

- A range of methods are used to monitor vegetation management activities and landholder compliance.

Information provided by  
members of the community

Early Detection System (EDS)

Audits

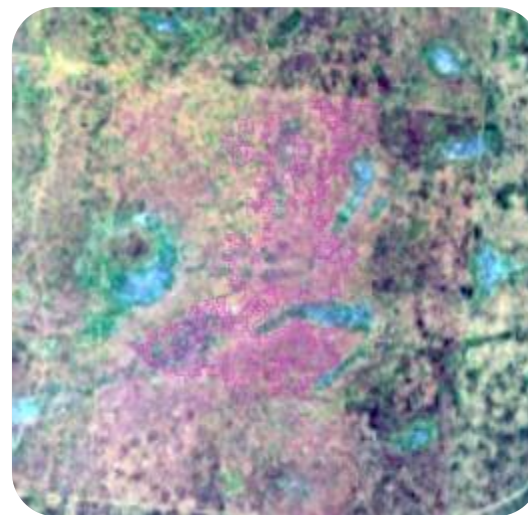
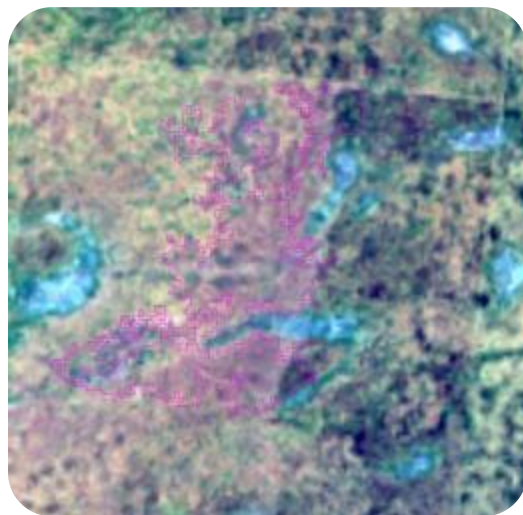
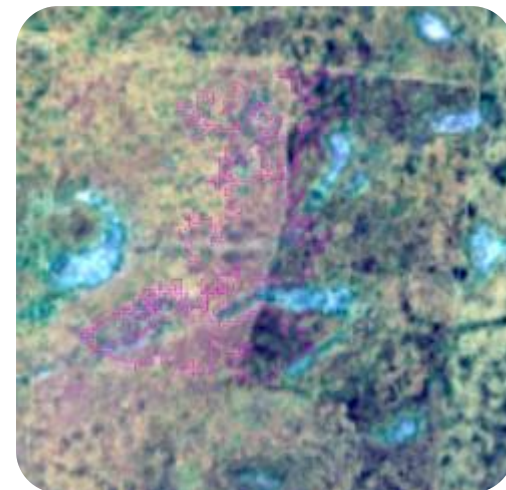
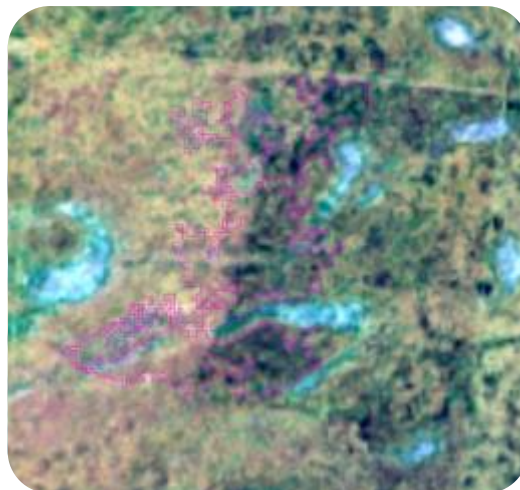
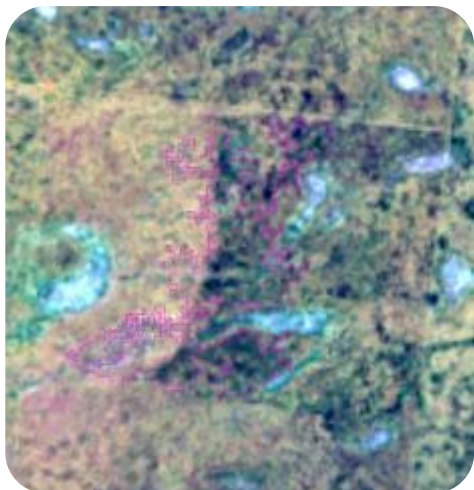
Statewide Landcover and  
Trees Study (SLATS)

# Early Detection System

- Early Detection System (EDS) uses satellite imagery captured on a 16-day cycle
- Experts filter EDS detections before they are determined to be 'explained' or 'unexplained'.
- DNRM may also want to contact a landholder for further clarification.



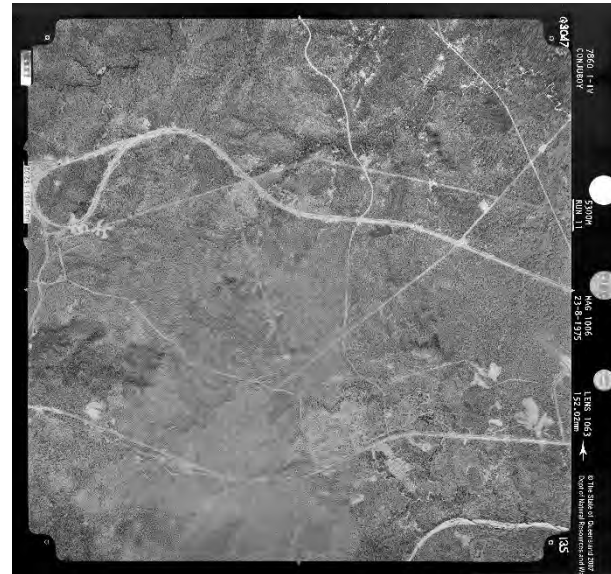




Like more information? Call 135VEG (13 58 34),  
email [vegetation@dnrme.qld.gov.au](mailto:vegetation@dnrme.qld.gov.au) or visit [www.qld.gov.au](http://www.qld.gov.au)

# Publicly available imagery

- Queensland Globe, Google Earth and QImagery



Like more information? Call 135VEG (13 58 34),  
email [vegetation@dnrme.qld.gov.au](mailto:vegetation@dnrme.qld.gov.au) or visit [www.qld.gov.au](http://www.qld.gov.au)



# Compliance Tools

- A range of methods are used to monitor vegetation management activities and landholder compliance.
- Low priority – map and educational letter
- Medium priority – Call and Warning letter
- High priority – further investigation, call and then Warning letter, reasonable belief PMAV, PIN
- Court action is a last resort – normally for those that won't stop clearing

# Compliance

- Who is legally responsible for vegetation clearing?
  - Landholders
  - Contractors



# Vegetation Management Laws

- Landholders are responsible for clearing work done by contractors
- Landholders should provide contractors with a copy of clearing authorisation
- Keep records of any clearing activities
- Supervise clearing activities undertaken on their property
- Contractors may also be held liable for any illegal activity.





# Key steps

What is the purpose of your clearing?

Understand which legislation applies to the purpose/activity

Obtain a property report

Check which clearing option applies to your property and progress as appropriate

Remember landholder and contractors are responsible for any clearing activity

Be aware of your responsibilities before any clearing activity starts

Like more information?

## ***Call Before You Clear***

Call  
**135VEG (13 58 34)**

Email  
[vegetation@dnrme.qld.gov.au](mailto:vegetation@dnrme.qld.gov.au)

Visit  
[www.qld.gov.au](http://www.qld.gov.au)  
[www.dnrme.qld.gov.au](http://www.dnrme.qld.gov.au)

Visit your local DNRME office