

# How to shop for a high-performing bull

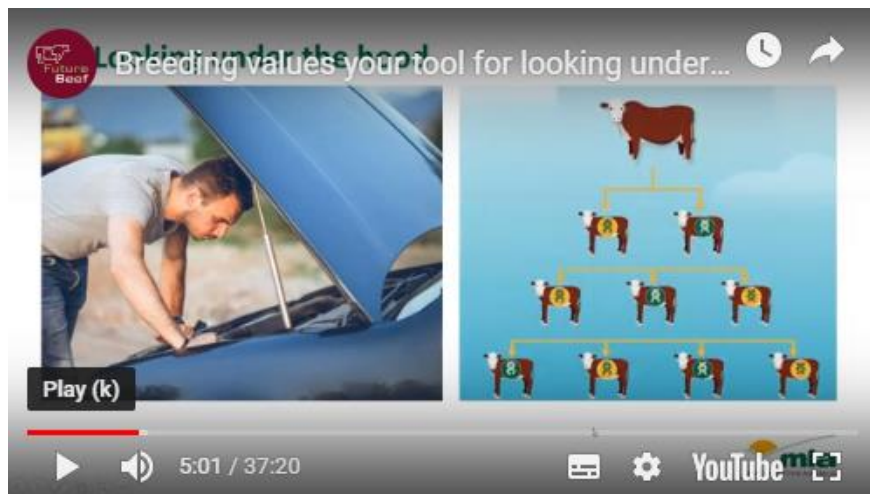
Clara Bradford  
National Adoption Manager – Genetics

Tim Emery  
Tropical Beef Technology Services



# Looking under the hood

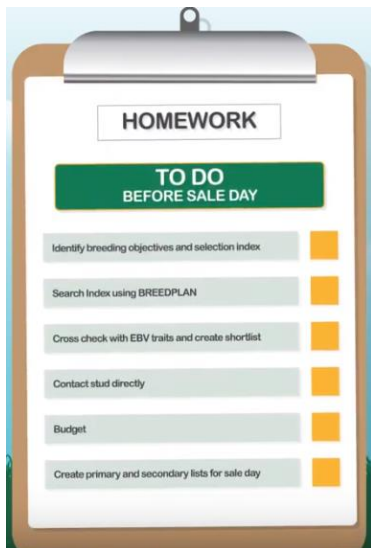
- ▶ **‘Breeding values: your tool for looking under the hood of your next sire’  
webinar recording**



Watch the webinar recording  
at [futurebeef.com.au](https://futurebeef.com.au) and search for ‘hood’

# Today's agenda

## Before the sale



**HOMEWORK**

**TO DO BEFORE SALE DAY**

- Identify breeding objectives and selection index
- Search Index using BREEDPLAN
- Cross check with EBV traits and create shortlist
- Contact stud directly
- Budget
- Create primary and secondary lists for sale day

## On sale day



## After the sale



**DOCUMENTATION**

- Brand
- Management tag
- Animal movement records  
LPA National Vendor Declaration
- Other relevant information

Tim, tell us about your (fictitious)  
operation?

## 1. Before the sale

# Before the sale

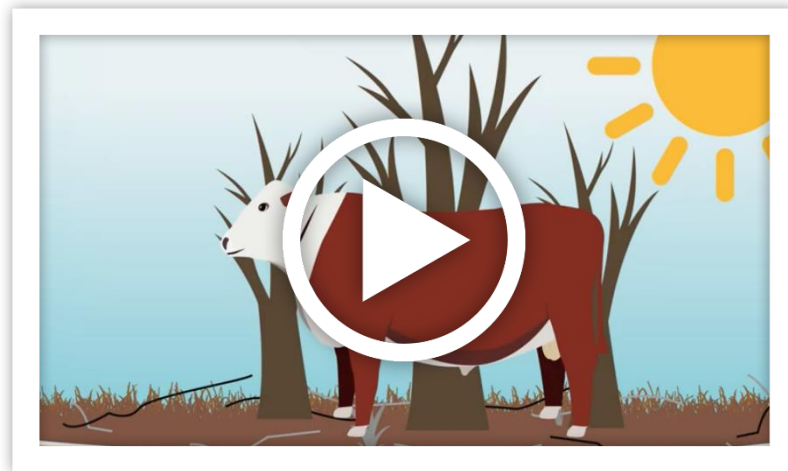
## Step 1

Identify your breeding objective/s

Example breeding objectives:

- **Over five years, increase weaning percentage by five percentage points**  
i.e. 80% to 85% from a nine week joining period
- **Over five years, increase steer turn-off weight by 20kg at the same age**  
i.e. 620kg to 640kg by 28-30 months

▶ How to set a breeding objective video



[genetics.mla.com.au](https://genetics.mla.com.au)

# Before the sale

## Step 2

Identify the relevant selection index

Example selection index:

- Export Index

▶ **What are beef indexes?**



[genetics.mla.com.au](https://genetics.mla.com.au)

# Before the sale

## Step 3

Identify the relevant Estimated Breeding Values

Example breeding objective:

---

- **Over five years, increase weaning percentage by five percentage points**

i.e. 80% to 85% from a nine week joining period

- **Over five years, increase steer turn-off weight by 20kg at the same age**

i.e. 620kg to 640kg by 28-30 months

Example selection index:

---

- Export Index

Example EBVs:

---

*Core EBVs*

- 600 day weight
- Days to calving

*Other important EBVs*

- 400 day weight
- Scrotal size
- Mature cow weight
- Rib and rump fat



# Before the sale

## Step 3

Identify the relevant Estimated Breeding Values

▶ What are Estimated Breeding Values?



[genetics.mla.com.au](https://genetics.mla.com.au)

# Before the sale

## Step 4

Find sires that match your desired Selection Index and Estimated Breeding Values using BREEDPLAN (EBV Enquiry/Sale Catalogues/Semen Catalogues)

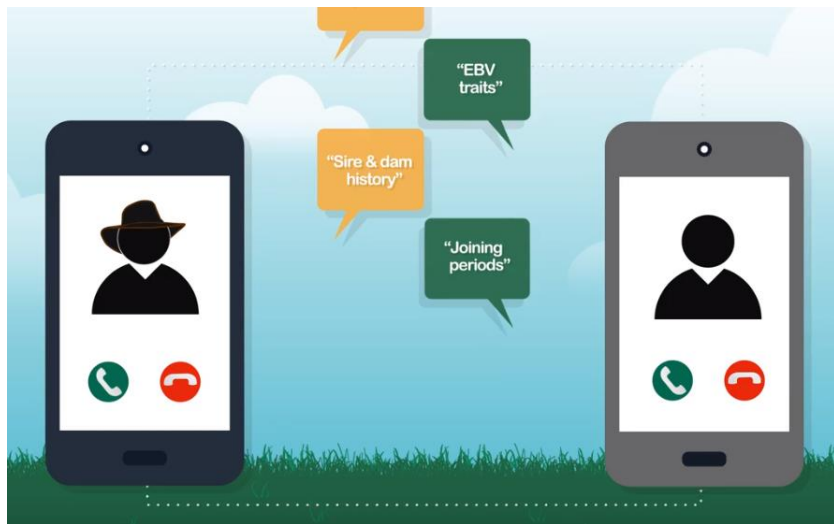


*(Slides 28-46 of this deck  
provide an 'offline' step-by-step version of this demonstration)*

# Before the sale

## Step 5

Contact the stud



Example information to ask the stud:

- ✓ Breeding objectives
- ✓ Length of joining period
- ✓ Culling protocols
- ✓ BULLCHECK certificate with morphology
- ✓ Vaccination program
- ✓ Biosecurity measures

# Before the Sale

## Step 6

Develop a top and second tier list of sires

August 2019 Santa Gertrudis GROUP BREEDPLAN																				
Lot	Name ID	Gestation Length (days)	Birth Wt (kg)	200 Day Wt (kg)	400 Day Wt (kg)	600 Day Wt (kg)	Mat Cow Wt (kg)	Milk (kg)	Scrotal Size (cm)	Days to Calving (days)	Carcass Wt (kg)	Eye Muscle Area (sq cm)	Rib Fat (mm)	Rump Fat (mm)	Retail Beef Yield (%)	IMF (%)	Percent Normal Sperm (%)	Flight Time (secs)	Domestic Index (\$)	Export Index (\$)
36	<a href="#">ROSEVALE NAIROBI N110 (PS)</a>	-	-	+20 70%	+32 70%	+44 72%	+49 68%	0 57%	+2.2 71%	-13.7 60%	+21 61%	+4.8 58%	+1.7 63%	+1.8 63%	+0.8 53%	+0.5 64%	-0.5 59%	+0.16 71%	+\$ 40	+\$ 58
60	<a href="#">ROSEVALE JETHRO N306 (P)</a>	-	-	+15 69%	+24 69%	+38 71%	+48 65%	+3 49%	+2.3 71%	-12.3 56%	-	+2.2 54%	+1.2 62%	+0.9 61%	+0.8 49%	+0.2 61%	+2.1 62%	+0.03 69%	+\$ 31	+\$ 50
31	<a href="#">ROSEVALE NIAGARA N124 (PS)</a>	-	-	+10 68%	+24 69%	+32 71%	+46 65%	-1 49%	+2.4 70%	-13.4 56%	-	+2.4 54%	+1.8 62%	+1.9 61%	+0.3 49%	+0.6 61%	+4.3 62%	+0.12 69%	+\$ 31	+\$ 49
78	<a href="#">ROSEVALE JETHRO N156 (PS)</a>	-	-	+15 69%	+28 70%	+37 71%	+51 65%	+3 50%	+2.9 57%	-12.4 57%	-	+2.4 56%	+1.0 62%	+0.9 61%	+0.4 51%	+0.7 62%	+3.0 62%	+0.10 70%	+\$ 32	+\$ 49
42	<a href="#">ROSEVALE NINTENDO N126 (P)</a>	-	-	+14 69%	+27 69%	+33 71%	+54 65%	-2 49%	+1.9 71%	-10.7 56%	-	+2.8 55%	+1.3 62%	+1.4 61%	+0.5 50%	+0.4 61%	+1.5 62%	+0.24 69%	+\$ 31	+\$ 45
47	<del>ROSEVALE NANANGO N333 (P)</del>	-	-	+10 66%	+28 67%	+38 68%	+45 62%	-1 41%	+2.2 69%	-9.0 50%	-	+2.6 53%	+0.8 60%	+0.7 59%	+0.6 47%	+0.3 59%	+4.3 55%	+0.10 68%	+\$ 31	+\$ 44
49	<a href="#">ROSEVALE NASHVILLE N590 (PS)</a>	-1.9 50%	-	+13 68%	+22 69%	+34 71%	+39 65%	0 49%	+2.1 70%	-11.0 55%	-	+2.1 54%	+1.3 62%	+1.4 61%	+0.2 49%	+0.4 60%	+5.2 61%	+0.13 69%	+\$ 26	+\$ 43
31	<del>ROSEVALE NASHVILLE N590 (PS)</del>	-	-	+15 68%	+26 69%	+38 70%	+48 64%	-3 48%	+2.4 70%	-6.6 54%	-	+3.8 54%	+0.6 61%	+0.2 60%	+1.1 49%	0.0 61%	+1.6 61%	-0.05 69%	+\$ 30	+\$ 42
146	<del>ROSEVALE KING BUN N128</del>	-	-	+12 64%	+29 66%	+36 63%	+38 59%	0 40%	+1.3 50%	-7.6 50%	-	+3.4 52%	+0.6 59%	+0.4 58%	+0.8 47%	+0.5 59%	+0.7 54%	+0.07 68%	+\$ 31	+\$ 41
68	<a href="#">ROSEVALE JOKER N42 (P)</a>	-	-	+14 67%	+29 68%	+37 70%	+37 64%	-2 47%	+2.0 70%	-6.7 54%	-	+5.2 54%	+1.7 61%	+1.6 60%	+0.7 49%	+0.5 61%	+2.1 60%	+0.07 67%	+\$ 32	+\$ 41
80	<a href="#">ROSEVALE JETHRO N304</a>	-2.5 51%	-	+17 69%	+26 69%	+41 71%	+42 65%	-1 50%	+1.7 71%	-6.6 56%	-	+3.9 55%	+0.9 62%	+0.8 61%	+0.7 50%	+0.3 61%	+5.5 59%	+0.13 69%	+\$ 28	+\$ 41
35	<a href="#">ROSEVALE NOKIA N608</a>	-	-	+12 69%	+25 70%	+34 71%	+34 67%	0 55%	+1.7 71%	-5.7 59%	+18 61%	+5.1 57%	+0.3 63%	+0.1 63%	+1.0 52%	+0.3 63%	+2.5 62%	+0.01 70%	+\$ 29	+\$ 37
132	<a href="#">ROSEVALE DOWNPOUR N112</a>	2nd	-	+15 69%	+26 69%	+35 71%	+48 67%	-3 53%	+2.6 71%	-4.7 57%	+15 60%	+3.2 55%	+1.2 63%	+1.3 62%	+0.2 51%	+0.2 62%	-0.6 63%	+0.16 70%	+\$ 24	+\$ 34
16	<a href="#">ROSEVALE NATAL N26</a>	2nd	-	+12 68%	+33 69%	+40 70%	+38 64%	-3 47%	+2.2 70%	-4.2 56%	-	+1.9 55%	+2.1 61%	+2.3 60%	-0.5 49%	+0.8 61%	+1.1 61%	+0.23 67%	+\$ 25	+\$ 32
67	<a href="#">ROSEVALE JOKER N36</a>	-	-	+18 68%	+25 69%	+37 70%	+39 64%	+2 48%	+1.6 70%	-2.3 54%	-	+5.0 55%	+0.9 61%	+0.7 60%	+1.0 50%	+0.1 61%	+1.2 47%	+0.10 68%	+\$ 25	+\$ 32
Breed Avg. EBVs for 2017 Born Calves		-0.2	+1.3	+11	+17	+23	+28	+0	+0.8	+0.2	+10	+2.3	+0.2	-0.2	+0.6	+0.0	+0.0	+0.04	+15	+17

# Before the sale

## Step 7

### Decide on your budget



Example budget:

Average bull price from last 5 sales = \$6,000

Breed average for Export Index = \$17

Shortlisted bull's Export Index = \$33 (top 10%)

Difference (\$33-\$17) = \$16

Value of sire component  $\$16/2 = \underline{\$8}$

Bull joined to 200 cows over lifetime (40 cows x 5 years)

Indicative value, break-even price that reflects the genetic merit of bull is  $200 \times \$8 = \$1,600$

Indicative value of bull  $\$6,000 + \$1,600 = \$7,600$

## 2. On sale day

# On sale day

## Step 1

Visually appraise your shortlisted sires



### Example checklist:

- ✓ Temperament
- ✓ Feet (scissor claws, cracks, interdigital fibroma etc.)
- ✓ Legs (post legged, sickle hocked, swelling etc.)
- ✓ Sheath (depth and angle)
- ✓ Testicles (size and abnormalities)
- ✓ Eyes

# On sale day

## Step 2

Make a plan on the order in which to make your bids

**Shopping List**

**PRIMARY SHORTLIST**

Animal name / ID

Animal name / ID	EBVs	BULLCHECK®	TEMPERAMENT	STRUCTURE	Rank
SIRE A M025	<input checked="" type="checkbox"/>	<input checked="" type="checkbox"/>	<input checked="" type="checkbox"/>	<input checked="" type="checkbox"/>	2
SIRE B M001	<input checked="" type="checkbox"/>	<input checked="" type="checkbox"/>	<input checked="" type="checkbox"/>	<input checked="" type="checkbox"/>	3
SIRE C M006	<input checked="" type="checkbox"/>	<input checked="" type="checkbox"/>	<input checked="" type="checkbox"/>	<input checked="" type="checkbox"/>	<input checked="" type="checkbox"/>
SIRE D M016	<input checked="" type="checkbox"/>	<input checked="" type="checkbox"/>	<input checked="" type="checkbox"/>	<input checked="" type="checkbox"/>	1

**SECONDARY SHORTLIST**

Animal ID

Animal ID	EBVs	BULLCHECK®	TEMPERAMENT	STRUCTURE	Rank
SIRE A M025	<input checked="" type="checkbox"/>	<input checked="" type="checkbox"/>	<input checked="" type="checkbox"/>	<input checked="" type="checkbox"/>	
SIRE B M001	<input checked="" type="checkbox"/>	<input checked="" type="checkbox"/>	<input checked="" type="checkbox"/>	<input checked="" type="checkbox"/>	
SIRE C M006	<input checked="" type="checkbox"/>	<input checked="" type="checkbox"/>	<input checked="" type="checkbox"/>	<input checked="" type="checkbox"/>	
SIRE D M016	<input checked="" type="checkbox"/>	<input checked="" type="checkbox"/>	<input checked="" type="checkbox"/>	<input checked="" type="checkbox"/>	



# On sale day

## Step 3

Only bid on the sires on your shortlist that tick the boxes for EBVs, fertility, structural soundness and temperament

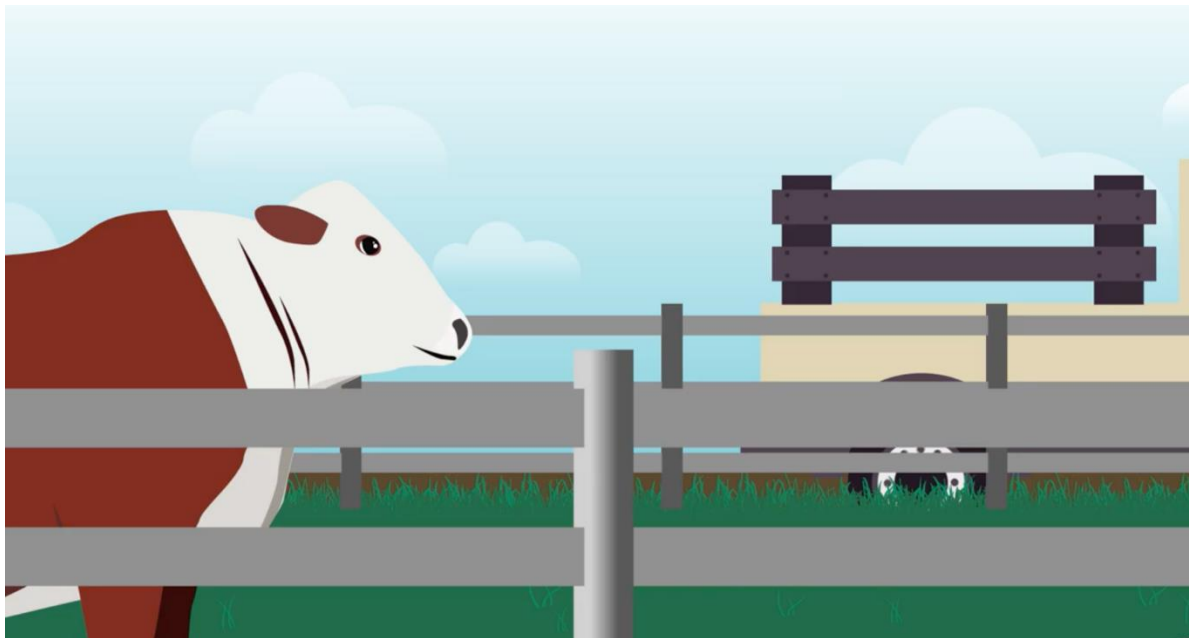


### 3. After the sale

# After the sale

## Step 1

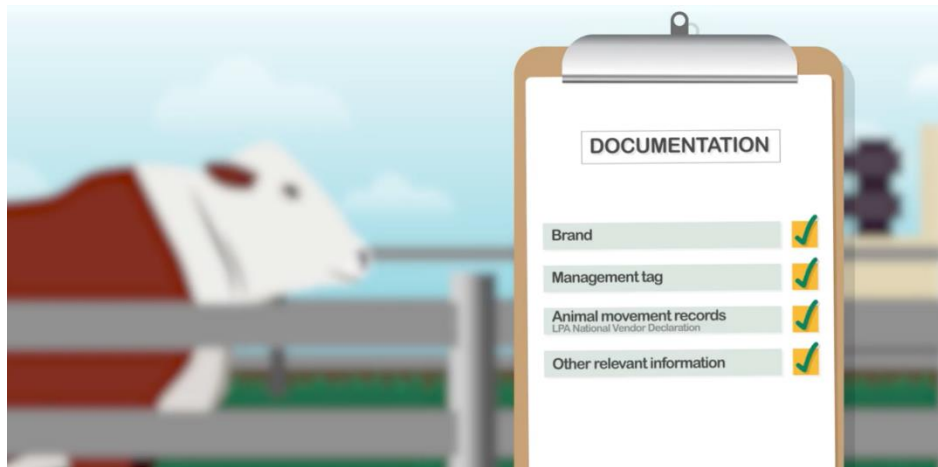
Practice sound biosecurity



# After the sale

## Step 2

## Record



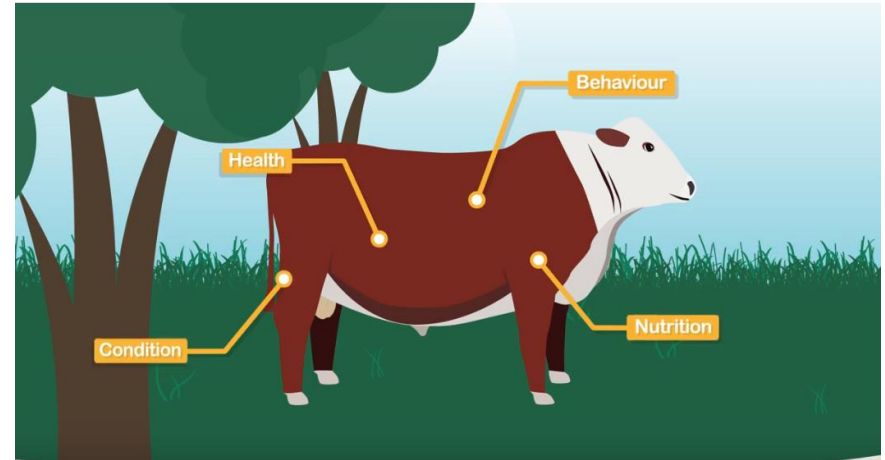
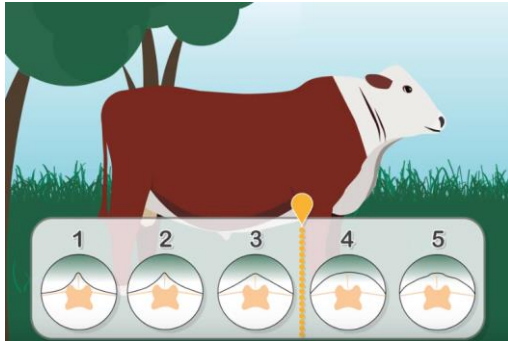
### Example records:

- ✓ Bull ID
- ✓ Birth date
- ✓ Sale price
- ✓ Vendor
- ✓ BULLCHECK results
- ✓ Estimated Breeding Values

# After the sale

## Step 3 Help your bull to settle in

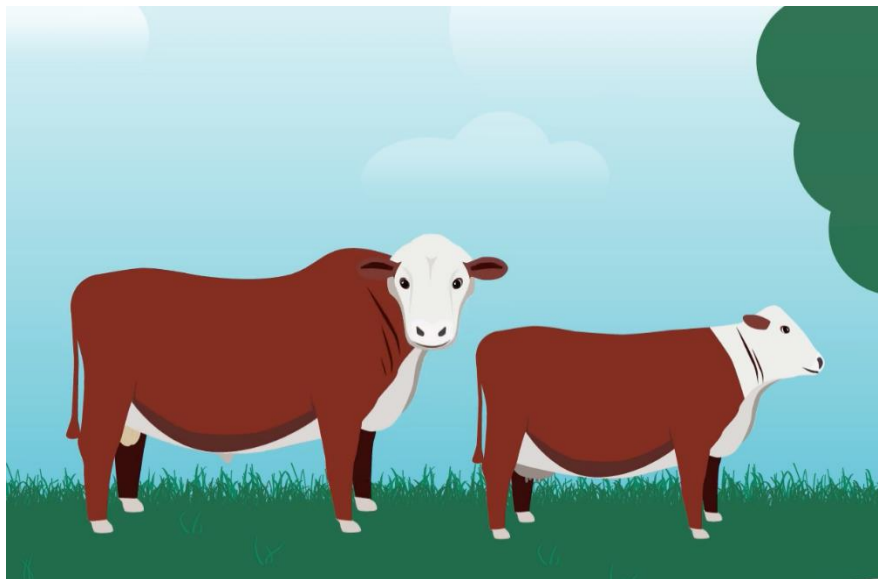
- Allow 6-8 weeks for the bull to de-stress prior to joining
- Monitor during the first few weeks
- Ensure 3.5 body condition score at joining



# After the sale

## Step 4

Confirm working order



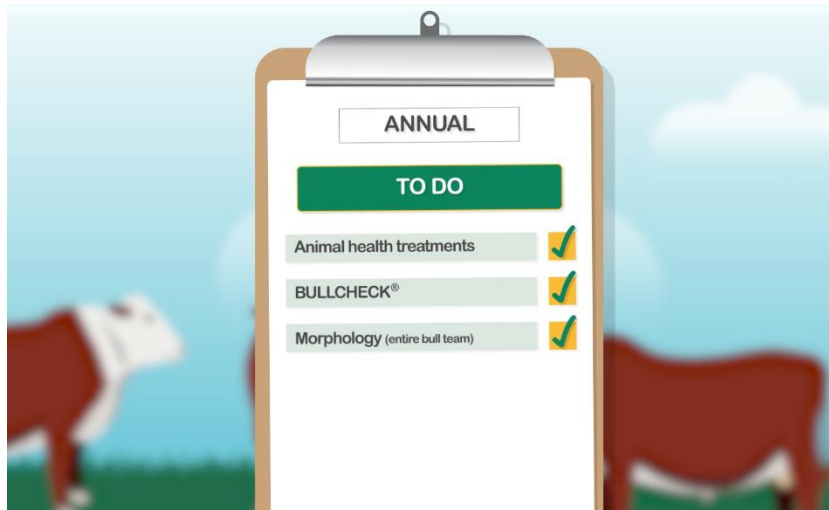
### Example checklist:

- ✓ Observe bulls on the off-side for potential penile abnormalities (corkscrew penis etc.)
- ✓ Monitor activity at a water square/lick trough

# After the sale

## Step 5

### Ongoing treatments



#### Example treatments:

- ✓ Vibrio
- ✓ Three day
- ✓ 7 in 1

# How to shop for a high-performing bull

## 1. Before the sale

Create a shortlist of high-performing bulls using objective selection

## 2. On sale day

Choose bulls from your shortlist that meet your physical assessments and budget

## 3. After the sale

Care for your bull once he's home to ensure he's fit and healthy to perform



# How to shop for a high-performing sire

MLA's new genetics hub contains resources – including a step-by-step video – on how to shop for a high-performing bull.



[genetics.mla.com.au/tropical](https://genetics.mla.com.au/tropical)

[genetics.mla.com.au/temperate](https://genetics.mla.com.au/temperate)

# More information

**Tim Emery**

Technical Officer

Tropical Beef Technology Services

[tim@tbts.une.edu.au](mailto:tim@tbts.une.edu.au)

0408 707 155

Based in Roma





# ACCELERATE

YOUR PRODUCTIVITY WITH GENETICS

---

better breeding values > better progeny > better performance

[genetics.mla.com.au](https://genetics.mla.com.au)



# Demonstration



# BREEDPLAN

[HOME](#)[OVERVIEW](#)[TECHNICAL](#)[DATABASE SEARCH](#)[MEMBER LOGIN](#)[LINKS](#)[CONTACTS](#)[STAFF](#)[Latest News](#)

## WELCOME TO BREEDPLAN

BREEDPLAN is a modern genetic evaluation system for beef cattle. Using Best Linear Unbiased Prediction (BLUP) technology, BREEDPLAN produces Estimated Breeding Values (EBVs) for cattle for a range of important production traits



[Charbray Society of Australia](#)  
[Charolais Society of Australia](#)  
[Chianina Society of Australia](#)  
[Devon Cattle Breeders Society of Australia](#)  
[Droughtmaster Stud Breeders Society of Australia](#)  
[Herefords Australia Ltd](#)  
[Lincoln Red Cattle Society](#)  
[Maine Anjou Society of Australia](#)  
[Mandalong Specials Cattle Association of Australia](#)  
[Murray Grey Beef Cattle Society](#)

[Performance Herds Australia](#)

[Queenslander Cattle Breed Society](#)

[Red Angus Society of Australia](#)

[Romagnola Breeders' Society](#)

[Santa Gertrudis Breeders \(Aust.\) Association](#)

[Shorthorn Beef](#)

[South Devon Cattle Society of Australia](#)

[Speckle Park International](#)

## Santa Animal Enquiry by EBV

[Home](#) [Animal Enquiry](#) [EBV Enquiry](#) [Mating Predictor](#) [Member Enquiry](#) [Sale Catalogues](#) [Semen Catalogues](#) [Download Files](#) [Online Transactions](#)

*Enter Selection Criteria Then Click Search*

Clear

Search

Name:	<input type="text"/>	<i>Enter the start of an animals name</i>
Stud Book No.(s):	<input type="text"/>	<i>Enter one or more stud book nos. separated by commas Use wildcard (%) if required (eg. 12345%)</i>
Tattoo:	<input type="text"/>	<i>Use wildcard (%) if required (eg. X23%)</i>
Calving Year(s):	<input type="text"/>	<i>Enter one or more calving years separated by commas</i>
Select if:	<input type="text"/>	▼
Select if:	<input type="text"/>	▼
Select if:	<input type="text"/>	▼

[EBV Enquiry](#) [Mating Predictor](#) [Member Enquiry](#) [Sale Catalogues](#) [Semen Catalogues](#) [Download Files](#)

**You'd  
normally  
simply click  
on the  
current sale  
options**

Sale Description	Sale Date	Lots
<a href="#">2019 Cree Santa Gertrudis Sale</a>	Friday 30th August, 2019, 11AM	75
<a href="#">2019 Rosevale Santa Gertrudis Sale</a>	Tuesday, 24th September, 2019	101

[View Completed Sale Catalogues](#)



**For demonstration purposes, we'll  
use an old sale catalogue – click on  
'View Completed Sale Catalogues'**



Sale Description	Sale Date	Lots
<a href="#">2018 ROSEVALE SALE</a>	25/09/2018	109

Numbers of bulls in the sale

Click here

[View Current Sale Catalogues](#)



## Santa Animal Listing 2018 ROSEVALE SALE

Entries: 1 ~ 15 of 109 are shown

[Show ALL EBVs](#) [Show All Entries](#) [Search/Sort Catalogue](#)

Selection Criteria: Select all

[Home](#) [Animal Enquiry](#) [EBV Enquiry](#) [Mating Predictor](#) [Member Enquiry](#) [@505](#) [Semen Catalogues](#) [Download Files](#) [Online](#)

Click here to kick  
start the online  
sorting process;  
then scroll to the  
bottom of the page

Lot	Name	Sex	Stud Book No.	Tattoo	Birth Date	Reg. Status	Calf Code
1	<a href="#">ROSEVALE NAUTICAL N20 (PP)</a>	Male	ROS17MN20	N20	15/08/2016	Classified	Purebred
2	<a href="#">ROSEVALE NOMINATOR N24 (P)</a>	Male	ROS17MN24	N24	21/08/2016	Classified	Purebred
3	<a href="#">ROSEVALE NAVARONE N32 (PP)</a>	Male	ROS17MN32	N32	26/08/2016	Classified	Purebred
4	<a href="#">ROSEVALE NORWAY N656 (PS)</a>	Male	ROS17MN656	N656	19/11/2016	Classified	Purebred
5	<a href="#">GLEN RUFUS PARK NEWTON N1198 (P)</a>	Male	GRP16MN1198	N1198	25/06/2016	Classified	Purebred
6	<a href="#">ROSEVALE NADAL N88 (ET)(AI)(P)</a>	Male	ROS17MN88	N88	09/09/2016	Classified	Purebred
7	<a href="#">ROSEVALE NASA N278 (PS)</a>	Male	ROS17MN278	N278	26/09/2016	Classified	Purebred
8	<a href="#">ROSEVALE NEPTUNE N296 (P)</a>	Male	ROS17MN296	N296	10/09/2016	Classified	Purebred
9	<a href="#">ROSEVALE NOSTRADAMUS N38</a>	Male	ROS17MN38	N38	27/08/2016	Classified	Purebred
10	<a href="#">ROSEVALE NEUTRON N402 (P)</a>	Male	ROS17MN402	N402	10/10/2016	Classified	Purebred
11	<a href="#">ROSEVALE NATIVE N66 (ET)(AI)(PS)</a>	Male	ROS17MN66	N66	05/09/2016	Classified	Purebred
12	<a href="#">ROSEVALE NETFLIX N284 (P)</a>	Male	ROS17MN284	N284	24/09/2016	Classified	Purebred
13	<a href="#">ROSEVALE NEWCASTLE N2 (P)</a>	Male	ROS17MN2	N2	04/08/2016	Classified	Purebred
14	<a href="#">ROSEVALE NAVAHO N432 (PS)</a>	Male	ROS17MN432	N432	13/10/2016	Classified	Purebred
15	<a href="#">ROSEVALE NED KELLY N28 (P)</a>	Male	ROS17MN28	N28	29/08/2016	Classified	Purebred

Trait Description	Min			Max			Min. Accuracy (%)			Breed Avg *
Gestation Length (days)										-0.2
Birth Wt (kg)										+1.3
200 Day Wt (kg)										+11
400 Day Wt (kg)										+17
600 Day Wt (kg)										+23
Mat Cow Wt (kg)										+28
Milk (kg)										+0
Scrotal Size (cm)										+0.8
Days to Calving (days)										+0.2
Carcase Wt (kg)										+10
Eye Muscle Area (sq cm)										+2.3
Rib Fat (mm)										+0.2
Rump Fat (mm)										-0.2
Retail Beef Yield (%)										+0.6
IMF (%)										+0.0
Percent Normal Sperm (%)										+0.0
Flight Time (secs)										+0.04
Domestic Index (\$)										+15
Export Index (\$)										+17

Sort By Lot No. ☒ Default ☐ Ascending ☐ Descending

On EBV Listing Display ☒ Name ☐ Stud Book No.

\* Breed Avg. EBVs for 2017 Born Calves [\(Click for Percentiles\)](#)

[Description of EBVs and S indexes](#)

Click here to bring up the  
Percentile Band Table

**Finding this table is essential – use the min/max columns  
to enter in the EBVs that you're after**

# Percentile Band Table

## Santa Percentile Bands for 2017 Born Calves

[EBV Enquiry](#) [Mating Predictor](#) [Member Enquiry](#) [Sale Catalogues](#) [Semen Catalogues](#) [Download Files](#)

Percentile Band	Gestation Length (days)	Birth Wt (kg)	200 Day Wt (kg)	400 Day Wt (kg)	600 Day Wt (kg)	Mat Cow Wt (kg)	Milk (kg)	Scrotal Size (cm)	Days to Calving (days)	Carcass Wt (kg)	Eye Muscle Area (sq cm)	Rib Fat (mm)	Rump Fat (mm)	Retail Beef Yield (%)	IMF (%)	Domestic Index (\$)	Export Index (\$)	Percent Normal Sperm (%)	Flight Time (secs)
Top Value	-4.2	-4.9	+37	+58	+68	+88	+9	+4.2	-20.4	+34	+7.8	+3.9	+4.1	+3.1	+1.3	+41	+69	+12.8	+0.70
Top 1%	-2.4	-1.6	+25	+39	+51	+65	+6	+2.8	-11.9	+25	+5.4	+2.1	+2.2	+1.8	+0.7	+32	+45	+8.0	+0.34
Top 5%	-1.6	-0.7	+21	+32	+43	+54	+4	+2.2	-7.9	+21	+4.5	+1.4	+1.4	+1.4	+0.5	+27	+36	+5.2	+0.20
Top 10%	-1.2	-0.2	+18	+28	+38	+48	+3	+1.9	-5.5	+18	+3.9	+1.1	+0.9	+1.2	+0.4	+24	+31	+3.8	+0.15
Top 15%	-0.9	+0.2	+17	+26	+35	+44	+2	+1.6	-4.1	+16	+3.5	+0.9	+0.7	+1.1	+0.3	+22	+27	+2.8	+0.12
Top 20%	-0.8	+0.4	+16	+24	+32	+40	+2	+1.5	-3.0	+15	+3.3	+0.7	+0.5	+1.0	+0.2	+21	+25	+2.1	+0.09
Top 25%	-0.6	+0.6	+15	+22	+30	+38	+2	+1.4	-2.2	+14	+3.0	+0.6	+0.3	+0.9	+0.2	+19	+23	+1.7	+0.08
Top 30%	-0.5	+0.8	+14	+21	+29	+35	+1	+1.2	-1.5	+13	+2.9	+0.5	+0.2	+0.8	+0.2	+18	+22	+1.3	+0.06
Top 35%	-0.5	+0.9	+13	+20	+27	+33	+1	+1.1	-0.9	+12	+2.7	+0.4	+0.1	+0.8	+0.1	+17	+20	+1.0	+0.06
Top 40%	-0.4	+1.0	+12	+19	+25	+31	+1	+1.0	-0.3	+11	+2.5	+0.3	+0.0	+0.7	+0.1	+16	+19	+0.7	+0.05
Top 45%	-0.3	+1.2	+11	+18	+24	+28	+0	+0.9	+0.2	+11	+2.4	+0.3	-0.1	+0.6	+0.1	+15	+17	+0.5	+0.04
Top 50%	-0.2	+1.3	+11	+17	+23	+27	+0	+0.8	+0.7	+10	+2.2	+0.2	-0.2	+0.6	+0.0	+14	+16	+0.2	+0.03
Top 55%	-0.1	+1.4	+10	+16	+21	+25	+0	+0.7	+1.1	+9	+2.1	+0.1	-0.3	+0.5	+0.0	+13	+15	+0.0	+0.02
Top 60%	-0.1	+1.5	+9	+15	+20	+23	-1	+0.7	+1.5	+8	+1.9	+0.0	-0.4	+0.5	+0.0	+13	+14	-0.2	+0.02
Top 65%	+0.0	+1.6	+9	+14	+19	+21	-1	+0.6	+2.0	+8	+1.8	-0.1	-0.5	+0.5	+0.0	+12	+12	-0.4	+0.01
Top 70%	+0.1	+1.8	+8	+13	+17	+19	-1	+0.5	+2.4	+7	+1.7	-0.1	-0.6	+0.4	-0.1	+11	+11	-0.6	+0.00
Top 75%	+0.3	+1.9	+7	+11	+16	+17	-1	+0.4	+2.9	+6	+1.5	-0.2	-0.7	+0.4	-0.1	+10	+10	-0.9	-0.01
Top 80%	+0.4	+2.1	+6	+10	+14	+15	-2	+0.3	+3.4	+5	+1.3	-0.3	-0.8	+0.3	-0.2	+9	+9	-1.2	-0.02
Top 85%	+0.6	+2.3	+5	+8	+12	+11	-2	+0.1	+4.1	+4	+1.1	-0.5	-1.0	+0.2	-0.2	+8	+7	-1.5	-0.04
Top 90%	+0.8	+2.6	+3	+6	+9	+7	-3	-0.1	+4.8	+2	+0.8	-0.7	-1.2	+0.1	-0.3	+6	+5	-1.9	-0.06
Top 95%	+1.1	+3.1	+1	+2	+4	+1	-4	-0.5	+6.1	-1	+0.5	-0.9	-1.5	+0.0	-0.4	+3	+2	-2.8	-0.09
Top 99%	+1.7	+4.2	-5	-4	-4	-8	-6	-1.2	+8.3	-6	-0.2	-1.5	-2.4	-0.3	-0.5	-2	-2	-5.7	-0.17
Low Value	+2.7	+6.5	-10	-15	-22	-30	-9	-2.3	+15.3	-19	-1.6	-2.6	-3.6	-1.4	-1.2	-10	-10	-16.5	-0.33

[Description of EBVs and \\$Indexes](#)

**For this demo: initial sort is for above average EBVs for '600 Day Wt', 'Days to Calving' and 'Export Index', with a list sorted by 'Export Index'**

Trait Description	Min	Max	Min. Accuracy (%)	Breed Avg *
Gestation Length (days)				-0.2
Birth Wt (kg)				+1.3
200 Day Wt (kg)				+11
400 Day Wt (kg)				+17
600 Day Wt (kg)	23			+23
Mat Cow Wt (kg)				+28
Milk (kg)				+0
Scrotal Size (cm)				+0.8
Days to Calving (days)		0.2		+0.2
Carcase Wt (kg)				+10
Eye Muscle Area (sq cm)				+2.3
Rib Fat (mm)				+0.2
Rump Fat (mm)				-0.2
Retail Beef Yield (%)				+0.6
IMF (%)				+0.0
Percent Normal Sperm (%)				+0.0
Flight Time (secs)				+0.04
Domestic Index (\$)				+15
Export Index (\$)	17			+17
Sort By: Export Index (\$)	Default Ascending Descending			
On EBV Listing Display	Name Stud Book No.			
* Breed Avg. EBVs for 2017 Born Calves (Click for Percentiles)				
Description of EBVs and \$Indexes				

Clear Search

Entries: 1 ~ 15 of 71 are shown

[Hide EBVs](#) [Hide EBV Acc](#) [Show All Entries](#) [Search/Sort Catalogue](#)

Selection Criteria: 600 Day Wt (kg) >= 23, Days to Calving (days) <= 0.2, Export Index (\$) >= 17,

[Home](#) [Animal Enquiry](#) [EBV Enquiry](#) [Mating Predictor](#) [Member Enquiry](#) [Sale Catalogues](#) [Semen Catalogues](#) [Download Files](#) [Online Transactions](#)

109 bulls have now gone to 71 bulls – plenty of options to start with that align with the example breeding objectives

To intensify the search and to add in additional criteria, go back to the table with the min/max columns

August 2019 Santa Gertrudis GROUP BREEDPLAN																				
Lot	Name/ID	Gestation Length (days)	Birth Wt (kg)	200 Day Wt (kg)	400 Day Wt (kg)	600 Day Wt (kg)	Mar Cow Wt (kg)	Milk (kg)	Scrotal Size (cm)	Days to Calving (days)	Carcass Wt (kg)	Eve Muscle Area (sq cm)	Rib Fat (mm)	Rump Fat (mm)	Retail Beef Yield (%)	D/F (%)	Percent Normal Sperm (%)	Flight Time (secs)	Domestic Index (\$)	Export Index (\$)
85	<a href="#">ROSEVALE MAJOR N82 (ET/AD)</a>	-3.5 55%	- 70%	+14 71%	+18 72%	+34 68%	+51 62%	+5 72%	+1.4 72%	-19.0 62%	+22 65%	+3.3 62%	-0.5 65%	-0.9 65%	+2.1 58%	+0.2 66%	+2.6 60%	+0.15 71%	+\$ 38	+\$ 65
46	<a href="#">ROSEVALE NIGEL N78 (ET/AD)</a>	-3.5 55%	- 70%	+16 71%	+22 72%	+36 68%	+57 62%	+5 72%	+1.2 72%	-15.6 62%	+26 65%	+3.9 62%	-1.0 65%	-1.4 65%	+2.6 58%	-0.1 66%	+2.9 60%	+0.31 71%	+\$ 41	+\$ 62
71	<a href="#">ROSEVALE MAJOR N76 (ET/AD)</a>	-3.5 55%	- 70%	+14 70%	+18 71%	+33 68%	+52 62%	+5 71%	+1.3 71%	-17.5 62%	+23 64%	+3.2 61%	-0.9 65%	-1.4 64%	+2.3 58%	0.0 65%	+2.2 59%	+0.24 71%	+\$ 38	+\$ 62
6	<a href="#">ROSEVALE NADAL N88 (ET/AD/P)</a>	-3.5 53%	- 68%	+21 69%	+25 69%	+46 70%	+54 66%	+4 58%	+0.6 71%	-12.8 59%	+24 63%	+4.0 60%	+0.9 65%	+1.0 64%	+1.9 57%	-0.2 65%	+5.3 69%	+0.31 69%	+\$ 38	+\$ 60
36	<a href="#">ROSEVALE NAIROBINI10 (PS)</a>	- -	- 70%	+20 70%	+32 72%	+44 68%	+49 57%	0 57%	+2.2 71%	-13.7 60%	+21 61%	+4.8 58%	+1.7 63%	+1.8 63%	+0.8 53%	+0.5 64%	-0.5 59%	+0.16 71%	+\$ 40	+\$ 58
34	<a href="#">ROSEVALE NINJA N26</a>	- -	- 69%	+23 70%	+33 71%	+49 67%	+58 57%	+2 57%	+2.0 71%	-11.7 61%	+17 62%	+2.2 59%	+0.5 64%	+0.4 63%	+0.2 54%	+0.7 64%	+5.6 64%	-0.07 71%	+\$ 32	+\$ 52
55	<a href="#">ROSEVALE JETHRON14 (P)</a>	- -	- 68%	+19 69%	+33 69%	+47 70%	+58 65%	+1 49%	+1.8 69%	-9.7 55%	- -	+4.3 55%	+0.6 61%	+0.5 60%	+0.7 50%	+0.4 61%	+2.4 61%	+0.03 70%	+\$ 35	+\$ 51
60	<a href="#">ROSEVALE JETHRON306 (P)</a>	- -	- 69%	+15 69%	+24 69%	+38 71%	+48 65%	+3 49%	+2.3 71%	-12.3 56%	- -	+2.2 54%	+1.2 62%	+0.9 61%	+0.8 49%	+0.2 61%	+2.1 62%	+0.03 69%	+\$ 31	+\$ 50
145	<a href="#">GLEN RUFUS PARK LACOSTE P069</a>	- -	- 67%	+19 68%	+25 68%	+37 66%	+38 62%	+4 46%	+2.0 70%	-9.8 52%	- -	+4.6 53%	+0.3 60%	+0.1 59%	+1.9 49%	-0.2 60%	+3.9 46%	+0.20 69%	+\$ 36	+\$ 49
31	<a href="#">ROSEVALE NIAGARA N124 (PS)</a>	- -	- 68%	+10 69%	+24 69%	+32 71%	+46 65%	-1 49%	+2.4 70%	-13.4 56%	- -	+2.4 54%	+1.8 62%	+1.9 61%	+0.3 49%	+0.6 61%	+4.3 62%	+0.12 69%	+\$ 31	+\$ 49
59	<a href="#">ROSEVALE EMPIRE N264 (P)</a>	- -	- 69%	+23 69%	+32 71%	+52 67%	+61 56%	+5 70%	+1.1 70%	-6.6 60%	+25 62%	+3.3 58%	-0.7 63%	-0.6 63%	+1.5 54%	-0.2 64%	+6.5 64%	+0.08 70%	+\$ 33	+\$ 49
78	<a href="#">ROSEVALE JETHRON156 (PS)</a>	- -	- 69%	+15 70%	+28 71%	+37 65%	+51 60%	+3 50%	+2.9 71%	-12.4 57%	- -	+2.4 56%	+1.0 62%	+0.9 61%	+0.4 51%	+0.7 62%	+3.0 62%	+0.10 70%	+\$ 32	+\$ 49
22	<a href="#">ROSEVALE NUDGE N8 (PS)</a>	- -	- 68%	+17 68%	+22 68%	+38 70%	+59 64%	+2 46%	+2.1 69%	-10.7 54%	- -	+2.7 54%	+1.4 60%	+1.4 59%	+0.6 49%	+0.4 61%	+3.3 60%	+0.13 69%	+\$ 27	+\$ 48
17	<a href="#">ROSEVALE NULLABOR N262</a>	- -	- 69%	+13 70%	+22 71%	+33 67%	+46 57%	+3 71%	+0.5 71%	-12.8 60%	+16 62%	-0.1 59%	-0.4 64%	-0.5 63%	+0.6 54%	+0.1 64%	+1.7 63%	+0.02 71%	+\$ 26	+\$ 46
42	<a href="#">ROSEVALE NINTENDO N126 (P)</a>	- -	- 69%	+14 69%	+27 71%	+33 65%	+54 49%	-2 49%	+1.9 71%	-10.7 56%	- -	+2.8 55%	+1.3 62%	+1.4 61%	+0.5 50%	+0.4 61%	+1.5 62%	+0.24 69%	+\$ 31	+\$ 45

**For this demo: the search has now intensified to come up with a much narrower shortlist of bulls to meet the breeding objectives**

Trait Description	Min			Max			Min. Accuracy (%)			Breed Avg *
Gestation Length (days)										-0.2
Birth Wt (kg)										+1.3
200 Day Wt (kg)										+11
400 Day Wt (kg)	Top 40%	19								+17
600 Day Wt (kg)	Top 25%	30								+23
Mat Cow Wt (kg)				54	Upper limit – Top 5%					+28
Milk (kg)										+0
Scrotal Size (cm)	Top 40%	1.0								+0.8
Days to Calving (days)				-2.2	Top 25%					+0.2
Carcase Wt (kg)										+10
Eye Muscle Area (sq cm)										+2.3
Rib Fat (mm)	Breed average	0.2								+0.2
Rump Fat (mm)	Breed average	-0.2								-0.2
Retail Beef Yield (%)										+0.6
IMF (%)	Breed average	0.0								+0.0
Percent Normal Sperm (%)										+0.0
Flight Time (secs)										+0.04
Domestic Index (\$)										+15
Export Index (\$)	Top 25%	23								+17
Sort By <input type="text" value="Export Index (\$)"/> <input checked="" type="radio"/> Default <input type="radio"/> Ascending <input type="radio"/> Descending										
On EBV Listing Display		<input checked="" type="radio"/> Name <input type="radio"/> Stud Book No.								
* Breed Avg. EBVs for 2017 Born Calves ( <a href="#">Click for Percentiles</a> )										
<a href="#">Description of EBVs and \$Indexes</a>										

**We've now got 17 bulls on the short-list and ranked by 'Export Index' – In this example, these are the bulls that I want to spend time looking at come sale day**

Entries: 1 ~ 15 of 17 are shown

[Hide EBVs](#) [Hide EBV Acc](#) [Show All Entries](#) [Search Sort Catalogue](#)

Selection Criteria: 600 Day Wt (kg) >= 19, 600 Day Wt (kg) >= 30, Mat Cow Wt (kg) <= 54, Scrotal Size (cm) >= 1.0, Days to Calving (days) <= -2.2, Rib Fat (mm) >= 0.2, Rump Fat (mm) >= -0.2, IMF (%) >= 0.0, Export Index

[Home](#) [Animal Enquiry](#) [EBV Enquiry](#) [Mating Predictor](#) [Member Enquiry](#) [Sale Catalogues](#) [Semen Catalogues](#) [Download Files](#) [Online Trar](#)

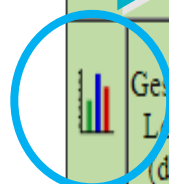
August 2019 Santa Gertrudis GROUP BREEDPLAN																					
Lor	Name ID	Gestation Length (days)	Birth Wt (kg)	200 Day Wt (kg)	400 Day Wt (kg)	600 Day Wt (kg)	Mat Cow Wt (kg)	Milk (kg)	Scrotal Size (cm)	Days to Calving (days)	Carcass Wt (kg)	Eye Muscle Area (sq cm)	Rib Fat (mm)	Rump Fat (mm)	Retail Beef Yield (%)	IMF (%)	Percent Normal Spots (%)	Flight Time (secs)	Domestic Index (\$)	Export Index (\$)	
36	<a href="#">ROSEVALE NAIROBIN110 (PS)</a>	-	-	+20 70%	+32 70%	+44 72%	+49 68%	0 57%	+2.2 71%	-13.7 60%	+21 61%	+4.8 58%	+1.7 63%	+1.8 63%	+0.8 53%	+0.5 64%	-0.5 59%	+0.16 71%	+\$ 40	+\$ 58	
60	<a href="#">ROSEVALE JETHRON306 (P)</a>	-	-	+15 69%	+24 69%	+38 71%	+48 65%	+3 49%	+2.3 71%	-12.3 56%	-	+2.2 54%	+1.2 62%	+0.9 61%	+0.8 49%	+0.2 61%	+2.1 62%	+0.03 69%	+\$ 31	+\$ 50	
31	<a href="#">ROSEVALE NIAGARA N124 (PS)</a>	-	-	+10 68%	+24 69%	+32 71%	+46 65%	-1 49%	+2.4 70%	-13.4 54%	-	+2.4 54%	+1.8 62%	+1.9 61%	+0.3 62%	+0.6 61%	+4.3 62%	+0.12 69%	+\$ 31	+\$ 49	
78	<a href="#">ROSEVALE JETHRON156 (PS)</a>	-	-	+15 69%	+28 70%	+37 71%	+51 65%	+3 50%	+2.9 71%	-12.4 57%	-	+2.4 56%	+1.0 62%	+0.9 61%	+0.4 51%	+0.7 62%	+3.0 62%	+0.10 70%	+\$ 32	+\$ 49	
42	<a href="#">ROSEVALE NINTENDON126 (P)</a>	-	-	+14 69%	+27 69%	+33 71%	+54 65%	-2 49%	+1.9 71%	-10.7 56%	-	+2.8 55%	+1.3 62%	+1.4 61%	+0.5 50%	+0.4 61%	+1.5 62%	+0.24 69%	+\$ 31	+\$ 48	
47	<a href="#">ROSEVALE NANANGO N538 (P)</a>	-	-	+10 66%	+28 67%	+38 68%	+45 62%	-1 41%	+2.2 69%	-9.0 50%	-	+2.6 53%	+0.8 60%	+0.7 59%	+0.6 59%	+0.3 55%	+4.3 55%	+0.10 68%	+\$ 31	+\$ 44	
49	<a href="#">ROSEVALE NASHVILLE N590 (PS)</a>	-1.9 50%	-	+13 68%	+22 69%	+34 71%	+39 65%	0 49%	+2.1 70%	-11.0 55%	-	+2.1 54%	+1.3 62%	+1.4 61%	+0.2 49%	+0.4 60%	+5.2 60%	+0.13 69%	+\$ 26	+\$ 43	
21	<a href="#">ROSEVALE NAVARA N10 (PP)</a>	-	-	+15 68%	+26 69%	+38 70%	+48 64%	-3 48%	+2.4 70%	-6.6 54%	-	+3.8 54%	+0.6 61%	+0.2 60%	+1.1 49%	0.0 61%	+1.6 61%	-0.05 69%	+\$ 30	+\$ 42	
146	<a href="#">ROSEVALE KUNG FU N1178</a>	-	-	+12 64%	+29 66%	+36 63%	+38 59%	0 40%	+1.3 68%	-7.6 50%	-	+3.4 52%	+0.6 55%	+0.4 58%	+0.8 53%	+0.5 54%	+0.7 54%	+0.07 68%	+\$ 31	+\$ 41	
68	<a href="#">ROSEVALE JOKER N41 (P)</a>	-	-	+14 67%	+29 68%	+37 70%	+37 64%	-2 47%	+2.0 70%	-6.7 54%	-	+5.2 54%	+1.7 61%	+1.6 60%	+0.7 49%	+0.5 61%	+2.1 60%	+0.07 67%	+\$ 32	+\$ 41	
80	<a href="#">ROSEVALE JETHRON304</a>	-2.5 51%	-	+17 69%	+26 69%	+41 71%	+42 65%	-1 50%	+1.7 71%	-6.6 56%	-	+3.9 55%	+0.9 62%	+0.8 61%	+0.7 50%	+0.3 59%	+5.5 59%	+0.13 69%	+\$ 28	+\$ 41	
35	<a href="#">ROSEVALE NOKIA N603</a>	-	-	+12 69%	+25 70%	+34 71%	+34 67%	0 55%	+1.7 71%	-5.7 59%	+18 61%	+5.1 57%	+0.3 63%	+0.1 63%	+1.0 52%	+0.3 63%	+2.5 62%	+0.01 70%	+\$ 29	+\$ 37	
132	<a href="#">ROSEVALE DOWNPOUR N112</a>	-	-	+15 69%	+26 69%	+35 71%	+48 67%	-3 53%	+2.6 71%	-4.7 57%	+15 60%	+3.2 55%	+1.2 62%	+1.3 62%	+0.2 51%	+0.2 62%	-0.6 63%	+0.16 70%	+\$ 24	+\$ 34	
16	<a href="#">ROSEVALE NATAL N26</a>	-	-	+12 68%	+33 70%	+40 70%	+38 64%	-3 47%	+2.2 70%	-4.2 56%	-	+1.9 55%	+2.1 61%	+2.3 60%	-0.5 49%	+0.8 61%	+1.1 61%	+0.23 67%	+\$ 25	+\$ 32	
67	<a href="#">ROSEVALE JOKER N36</a>	-	-	+18 68%	+25 69%	+37 70%	+39 64%	+2 48%	+1.6 70%	-2.3 54%	-	+5.0 55%	+0.9 61%	+0.7 60%	+1.0 50%	+0.1 61%	+1.2 61%	+0.10 68%	+\$ 25	+\$ 32	
Breed Avg. EBVs for 2017 Born Calves			-0.2	+1.3	+11	+17	+23	+28	+0	+0.8	+0.2	+10	+2.3	+0.2	+0.2	+0.6	+0.0	+0.0	+0.04	+15	+17



Click on each  
individual animal  
to find out more  
information

August 2019 Santa Gertrudis GROUP BREEDPLAN																					
Lot	Name ID	Gestation Length (days)	Birth Wt (kg)	200 Day Wt (kg)	400 Day Wt (kg)	600 Day Wt (kg)	Mar Cow Wt (kg)	Milk (kg)	Scrotal Size (cm)	Days to Calving (days)	Carcass Wt (kg)	Eye Muscle Area (sq cm)	Rib Fat (mm)	Rump Fat (mm)	Retal Beef Yield (%)	D/G (%)	Percent Normal Sperm (%)	Fertil Time (secs)	Domestic Index (\$)	Export Index (\$)	
36	<a href="#">ROSEVALE NAIROBI N110 (PS)</a>	-	-	+20	+32	+44	+49	0	+2.2	-13.7	+21	+4.8	+1.7	+1.8	+0.8	+0.5	-0.5	+0.16	+\$ 40	+\$ 58	
		-	-	70%	70%	72%	72%	68%	57%	71%	60%	59%	63%	63%	63%	53%	64%	71%			
60	<a href="#">ROSEVALE JETHRO N306 (P)</a>	-	-	+15	+24	+38	+48	+3	+2.3	-12.3	-	+2.2	+1.2	+0.9	+0.8	+0.2	+2.1	+0.03	+\$ 31	+\$ 50	
		-	-	69%	69%	71%	65%	49%	71%	56%	-	54%	62%	61%	49%	61%	62%	69%			
31	<a href="#">ROSEVALE NIAGARA N124 (PS)</a>	-	-	+10	+24	+32	+46	-1	+2.4	-13.4	-	+2.4	+1.8	+1.9	+0.3	+0.6	+4.3	+0.12	+\$ 31	+\$ 49	
		-	-	68%	69%	71%	65%	49%	70%	56%	-	54%	62%	61%	49%	61%	62%	69%			
78	<a href="#">ROSEVALE JETHRO N156 (PS)</a>	-	-	+15	+28	+37	+51	+3	+2.9	-12.4	-	+2.4	+1.0	+0.9	+0.4	+0.7	+3.0	+0.10	+\$ 32	+\$ 49	
		-	-	69%	70%	71%	65%	50%	71%	57%	-	56%	62%	61%	51%	62%	62%	70%			
42	<a href="#">ROSEVALE NINTENDO N126 (P)</a>	-	-	+14	+27	+33	+54	-2	+1.9	-10.7	-	+2.8	+1.3	+1.4	+0.5	+0.4	+1.5	+0.24	+\$ 31	+\$ 45	
		-	-	69%	69%	71%	65%	49%	71%	56%	-	55%	62%	61%	50%	61%	62%	69%			
47	<a href="#">ROSEVALE NANANGO N538 (P)</a>	-	-	+10	+28	+38	+45	-1	+2.2	-9.0	-	+2.6	+0.8	+0.7	+0.6	+0.3	+4.3	+0.10	+\$ 31	+\$ 44	
		-	-	68%	67%	68%	62%	41%	69%	50%	-	53%	60%	59%	47%	59%	55%	68%			
49	<a href="#">ROSEVALE NASHVILLE N590 (PS)</a>	-1.9 50%	-	+13	+22	+34	+39	0	+2.1	-11.0	-	+2.1	+1.3	+1.4	+0.2	+0.4	+5.2	+0.13	+\$ 26	+\$ 43	
		-	-	68%	69%	71%	65%	49%	70%	55%	-	54%	62%	61%	49%	60%	61%	69%			
21	<a href="#">ROSEVALE NAVARA N10 (PP)</a>	-	-	+15	+26	+38	+48	-3	+2.4	-6.6	-	+3.8	+0.6	+0.2	+1.1	0.0	+1.6	-0.05	+\$ 30	+\$ 42	
		-	-	68%	69%	70%	64%	48%	70%	54%	-	54%	61%	60%	49%	61%	61%	69%			
146	<a href="#">ROSEVALE KUNG FU N1178</a>	-	-	+12	+29	+36	+38	0	+1.3	-7.6	-	+3.4	+0.6	+0.4	+0.8	+0.5	+0.7	+0.07	+\$ 31	+\$ 41	
		-	-	64%	66%	63%	59%	40%	68%	50%	-	52%	59%	58%	47%	59%	54%	68%			
68	<a href="#">ROSEVALE JOKER N42 (P)</a>	-	-	+14	+29	+37	+37	-2	+2.0	-6.7	-	+5.2	+1.7	+1.6	+0.7	+0.5	+2.1	+0.07	+\$ 32	+\$ 41	
		-	-	67%	68%	70%	64%	47%	70%	54%	-	54%	61%	60%	49%	61%	60%	67%			
80	<a href="#">ROSEVALE JETHRO N304</a>	-2.5 51%	-	+17	+26	+41	+42	-1	+1.7	-6.6	-	+3.9	+0.9	+0.8	+0.7	+0.3	+5.5	+0.13	+\$ 28	+\$ 41	
		-	-	69%	69%	71%	65%	50%	71%	56%	-	55%	62%	61%	50%	61%	59%	69%			
35	<a href="#">ROSEVALE NOKIA N608</a>	-	-	+12	+25	+34	+34	0	+1.7	-5.7	+18	+5.1	+0.3	+0.1	+1.0	+0.3	+2.5	+0.01	+\$ 29	+\$ 37	
		-	-	69%	70%	71%	67%	55%	71%	59%	61%	57%	63%	63%	52%	63%	62%	70%			
132	<a href="#">ROSEVALE DOWNPOUR N112</a>	-	-	+15	+26	+35	+48	-3	+2.6	-4.7	+15	+3.2	+1.2	+1.3	+0.2	+0.2	-0.6	+0.16	+\$ 24	+\$ 34	
		-	-	69%	69%	71%	67%	53%	71%	57%	60%	55%	63%	62%	51%	62%	63%	70%			
16	<a href="#">ROSEVALE NATAL N26</a>	-	-	+12	+33	+40	+38	-3	+2.2	-4.2	-	+1.9	+2.1	+2.3	-0.5	+0.8	+1.1	+0.23	+\$ 25	+\$ 32	
		-	-	68%	69%	70%	64%	47%	70%	56%	-	55%	61%	60%	49%	61%	61%	67%			
67	<a href="#">ROSEVALE JOKER N36</a>	-	-	+18	+25	+37	+39	+2	+1.6	-2.3	-	+5.0	+0.9	+0.7	+1.0	+0.1	+1.2	+0.10	+\$ 25	+\$ 32	
		-	-	68%	69%	70%	64%	48%	70%	54%	-	55%	61%	60%	50%	61%	47%	68%			
Breed Avg. EBVs for 2017 Born Calves		-0.2	+1.3	+11	+17	+23	+28	+0	+0.8	+0.2	+10	+2.3	+0.2	-0.2	+0.6	+0.0	+0.0	+0.04	+15	+17	

Click here to look at the  
EBV Percentile Graph



August 2019 Santa Gertrudis GROUP BREEDPLAN

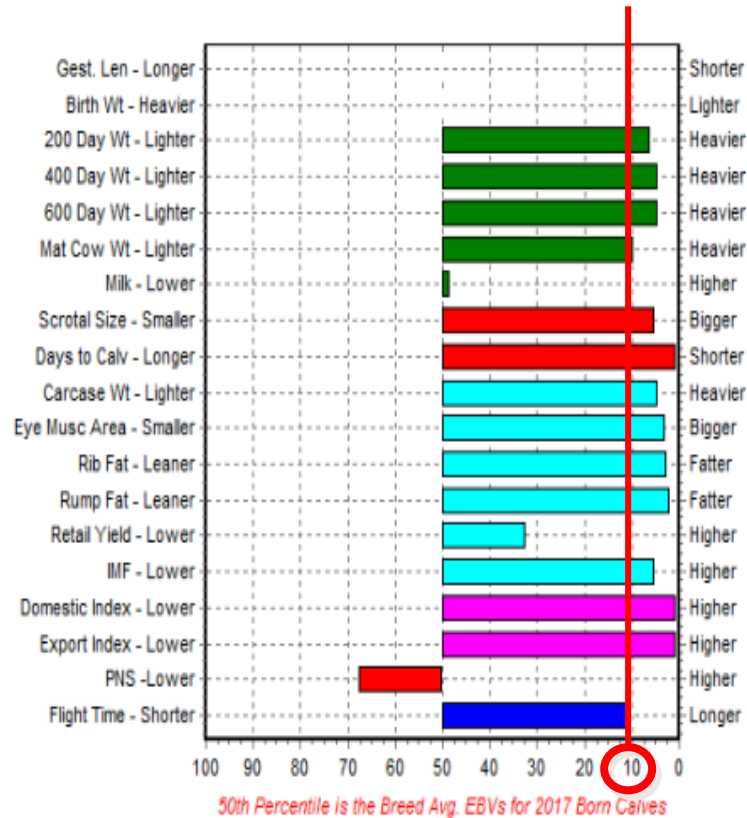
	Gestation Length (days)	Birth Wt (kg)	200 Day Wt (kg)	400 Day Wt (kg)	600 Day Wt (kg)	Mat Cow Wt (kg)	Milk (kg)	Scrota Size (cm)	Days to Calving (days)	Carcase Wt (kg)	Eye Muscle Area (sq cm)	Rib Fat (mm)	Rump Fat (mm)	Retail Beef Yield (%)	IMF (%)	Percent Normal Sperm (%)	Flight Time (secs)
EBV	-	-	+20	+32	+44	+49	0	+2.2	-13.7	+21	+4.8	+1.7	+1.8	+0.8	+0.5	-0.5	+0.16
Acc	-	-	70%	70%	72%	68%	57%	71%	60%	61%	58%	63%	63%	53%	64%	59%	71%
Breed Avg. EBVs for 2017 Born Calves <a href="#">Click for Percentiles</a>																	
EBV	-0.2	+1.3	+11	+17	+23	+28	+0	+0.8	+0.2	+10	+2.3	+0.2	-0.2	+0.6	+0.0	+0.0	+0.04

Traits Observed: 200WT,400WT,600WT,SS,FAT,EMA,IMF,PNS,FLT

Traits  
observed/measured  
on the actual animal

SELECTION INDEX VALUES		
Market Target	Index Value	Breed Average
Domestic Index (\$)	+\$ 40	+\$ 15
Export Index (\$)	+\$ 58	+\$ 17

## EBV Percentiles for ROSEVALE NAIROBI N110 (PS)



## EBV Percentile Graph for N110

- Top 10% for the majority of traits:
- Green (growth)
- Red (fertility)
- Light blue (carcass)
- Purple (indexes)
- Dark blue (other traits)

For further information, read this factsheet on the TBTS/SBTS websites:

[Where does this animal rank? Introducing the EBV Percentile Graph](#)

— Sire: [WIGHTFIELDS DOWNPOUR G21 \(P\)](#)

— [ROSEVALE MATLOCK W28 \(A\)\(P\)](#)

— [WIGHTFIELDS A032](#)

— [WIGHTFIELDS WJ76](#)

Animal: [ROSEVALE NAIROBI N110 \(PS\)](#)

— [WAVE HILL MAJOR \(P\)](#)

— [STRATHMORE SERGEANT X152 \(PS\)](#)

— [STRATHMORE 87L](#)


— Dam: [ROSEVALE CLASSIC G417 \(P\)](#)

— [DIAMOND H FREEMAN](#)

— [ROSEVALE CLASSIC A407](#)

— [ROSEVALE X199](#)

 Click here to look  
up dam data

August 2019 Santa Gertrudis GROUP BREEDPLAN																		
	Gestation Length (days)	Birth Wt (kg)	200 Day Wt (kg)	400 Day Wt (kg)	600 Day Wt (kg)	Mat Cow Wt (kg)	Milk (kg)	Scrotal Size (cm)	Days to Calving (days)	Carcase Wt (kg)	Eye Muscle Area (sq cm)	Rib Fat (mm)	Rump Fat (mm)	Retail Beef Yield (%)	Percent IMF (%)	Normal Sperm (%)	Flight Time (secs)	
EBV	-	-	+20	+32	+44	+49	0	+2.2	-13.7	+21	+4.8	+1.7	+1.8	+0.8	+0.5	-0.5	+0.16	
Acc	-	-	70%	70%	72%	68%	57%	71%	60%	61%	58%	63%	63%	53%	64%	59%	71%	
Breed Avg. EBVs for 2017 Born Calves <a href="#">Click for Percentiles</a>																		
EBV	-0.2	+1.3	+11	+17	+23	+28	+0	+0.8	+0.2	+10	+2.3	+0.2	-0.2	+0.6	+0.0	+0.0	+0.04	

Traits Observed: 200WT,400WT,600WT,SS,FAT,EMA,IMF,PNS,FLT

SELECTION INDEX VALUES		
Market Target	Index Value	Breed Average
Domestic Index (\$)	+\$ 40	+\$ 15
Export Index (\$)	+\$ 58	+\$ 17

## ROSEVALE CLASSIC G417 (P)

[EBV Enquiry](#) [Mating Predictor](#) [Member Enquiry](#) [Sale Catalogues](#) [Semen Catalogue](#)

Stud Book No.: ROS11FG417

Sex: Female

Tattoo: G417

Birth Date: 06/10/2010

Registration Status: Classified

Classification: Classified S- on 16/04/2012

Calf Code 3rd Cross

Calving Year: 2011

Status: Active

Horn: Polled

Sire: [STRATHMORE SERGEANT X152 \(PS\)](#)

Dam: [ROSEVALE CLASSIC A407](#)

Breeder: [G.A. GREENUP & CO.](#)

Current Owner: [G.A. GREENUP & CO.](#)

PR Form No.: 53693

Progeny: [\[7 - View\]](#)

Pedigree: [\[View\]](#)

 [Click here](#)

<u>Name</u>	<u>Sex</u>	<u>Stud Book No.</u>	<u>Tattoo</u>	<u>Birth Date</u>	<u>Reg. Status</u>	<u>Calf Code</u>
<a href="#">ROSEVALE YOGI J382</a>	Male	ROS13MJ382	J382	26/09/2012	Commercial	Purebred
<a href="#">ROSEVALE CLASSIC K307 (P)</a>	Female	ROS14FK307	K307	20/10/2013	Commercial	3rd Cross
<a href="#">ROSEVALE CLASSIC L475</a>	Female	ROS15FL475	L475	19/10/2014	Classified	3rd Cross
<a href="#">ROSEVALE CLASSIC M181</a>	Female	ROS16FM181	M181	19/09/2015	Classified	3rd Cross
<a href="#">ROSEVALE NAIROBI N110 (PS)</a>	Male	ROS17MN110	N110	25/09/2016	Classified	Purebred
<a href="#">ROSEVALE PACINO P436</a>	Male	ROS18MP436	P436	30/10/2017	Classified	Purebred
<a href="#">ROSEVALE PETER Q120</a>	Male	ROS19MQ120	Q120	27/09/2018		Purebred

**Calving record – if something  
doesn't look right, contact the  
seedstock producer**