



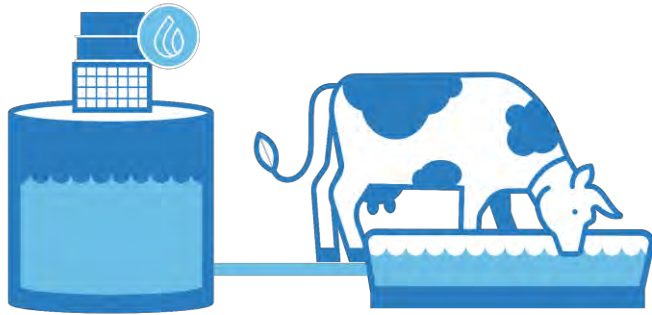
**FARMBOT**  
MONITORING SOLUTIONS

E-Beef - Improving Productivity  
& Profitability in Grazing  
June 2020

EVERY FARMER'S  
FIRST THOUGHT  
OF THE DAY IS ABOUT  
**WEATHER  
& WATER**



# Reduce water runs by 75% or more



WATER LEVEL  
MONITOR



Self-install, solar-powered  
**Remote Water Level  
Monitor** with multiple “add-  
on” capabilities

**DATA & REAL-TIME ALERTS = KNOWLEDGE = BETTER DECISIONS & LOWER LABOUR & FUEL COSTS**

# FARMBOT IS EMPOWERING FARMERS & GIVING THEM PEACE OF MIND

---



## COMPLETE CERTAINTY

- WORKS ANYWHERE VIA SATELLITE / 3G/4G/LTE
- ALWAYS ON DUTY - 24/7/365
- SENDS SMS ALERTS IN REAL-TIME
- CAN BE VIEWED FROM A DESKTOP/ MOBILE DEVICE



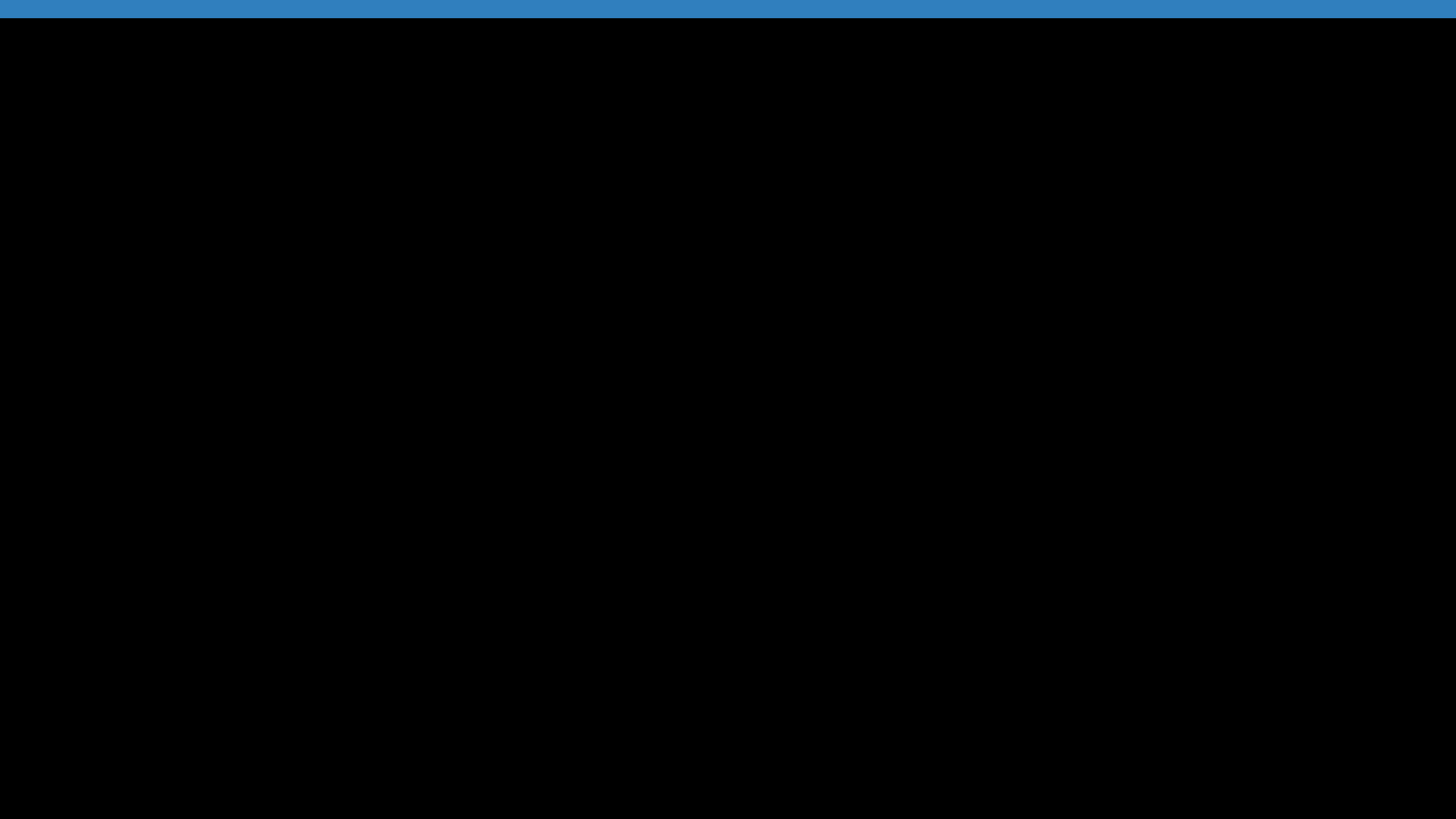
## BETTER DECISIONS

- TRACK DETAILED WATER USAGE AND TREND ANALYSIS
- SUPPORTS PLANNING FOR THE FUTURE
- ENABLES MORE PRODUCTIVE MANAGEMENT ROUTINES



## COST-EFFECTIVE SOLUTIONS

- REDUCES WATER INSPECTIONS BY UP TO 90%
- REDUCE LABOUR AND FUEL COSTS
- ARRIVES IN THE MAIL – EASY TO INSTALL AND RELOCATE – PLUG & PLAY



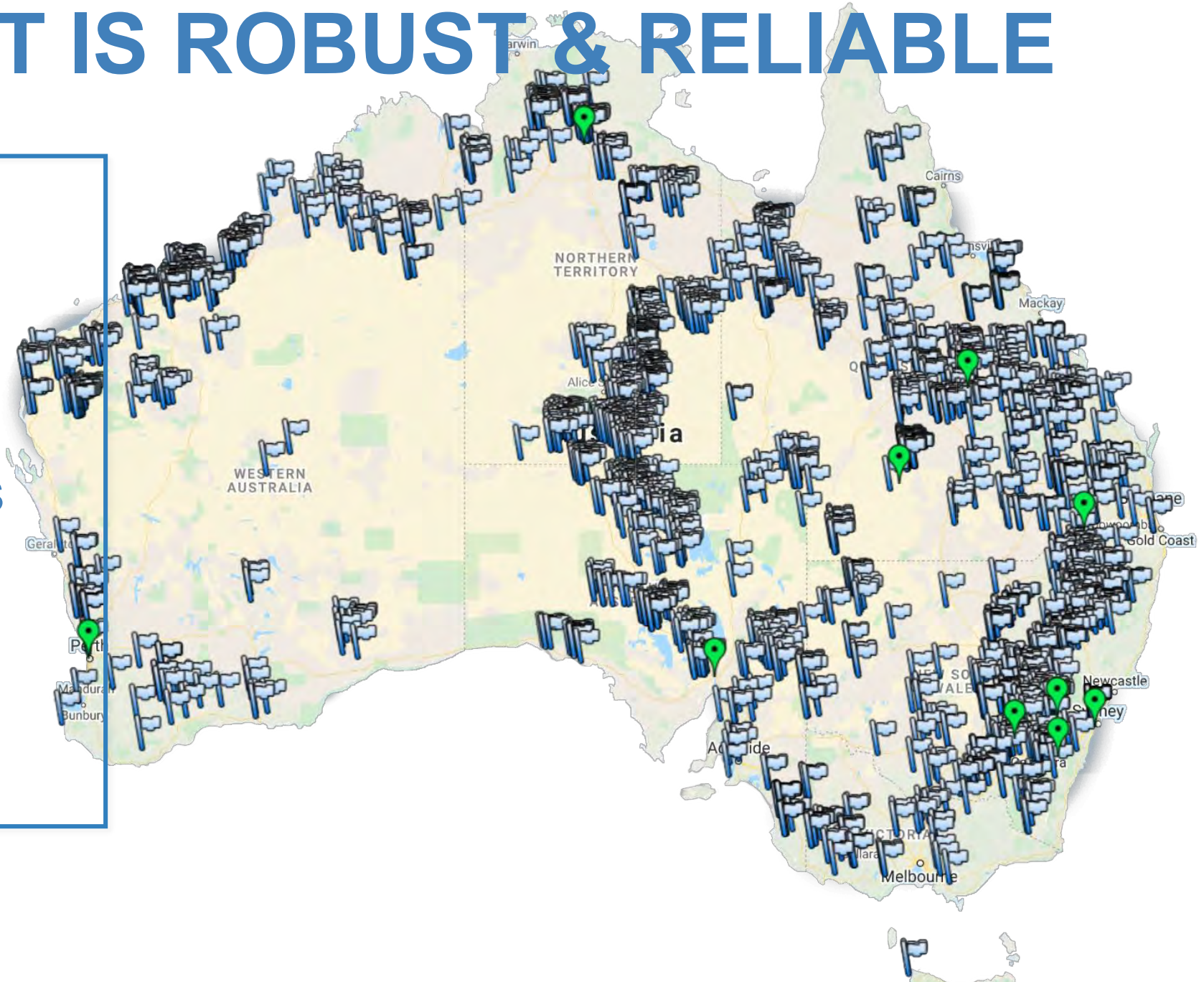


# FARMBOT IS ROBUST & RELIABLE

More than

# 2500

FARMBOT MONITORS  
EMPLOYED ACROSS  
**AUSTRALIA**



# FARMBOT'S ON-FARM ECOSYSTEM



WATER LEVEL MONITOR



RAIN GAUGE



LINE PRESSURE



FLOW



FUEL



SAFETY CHECK-IN



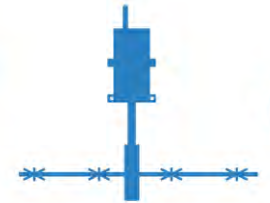
TROUGH



PUMP



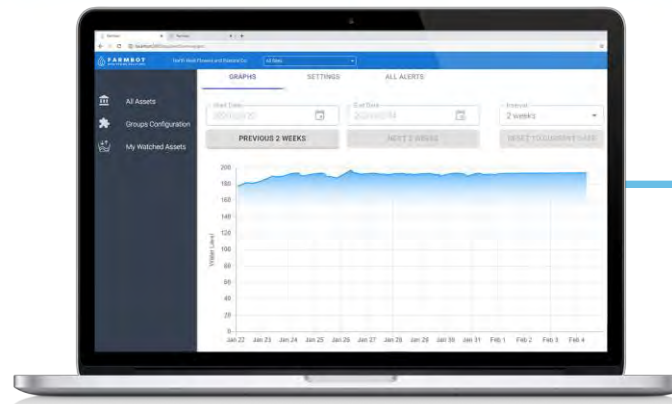
CAMERA



ELECTRIC FENCE



THIRD PARTY SENSORS



AN EMERGING ECOSYSTEM TO MANAGE MORE ASPECTS OF YOUR BUSINESS USING

# WHAT YOU NEED TO KNOW, WHEN YOU NEED TO KNOW IT

REAL-TIME DATA &  
ALERTS



ACTIONABLE INSIGHTS



BUILDING MORE PRODUCTIVE &  
SUSTAINABLE BUSINESSES







# WHY FARMBOT IS DIFFERENT

- Farmbot sends data as often as required – NOT AT SET INTERVALS
- Trend forecast – alerts are event-drive – FARMBOT IS LIVE
- Farmbot sends water-level data when a notable change has occurred, and intervention is needed
- Other telemetry options tend to send data at fixed intervals, and they often miss key events and intervention points
- The Farmbot Monitor can transmit data for up to 20 add-on sensors
- Satellite monitors will work anywhere
- Cellular (3G/4G/LTE) monitors will work wherever you have a single bar, or better

# WHAT DOES FARMBOT COST?



FARMBOT MONITOR  
Water Level Monitoring

**\$1190**

+

CELLULAR 3G/4G  
SUBSCRIPTION

Annual Data & Service Fee

**\$342**

**\$1/Day**

SATELLITE  
SUBSCRIPTION

Annual Data & Service Fee

**\$456**

**\$1.25/Day**





**FARMBOT**  
MONITORING SOLUTIONS



THIS IS AN ISOLATED DEAL  
PURCHASE A FARMBOT  
IN APRIL & RECIEVE

**6 MONTHS  
FREE DATA**

# COST / BENEFIT ANALYSIS

Cost/unit	1,019\$/unit
Cost per month	\$36
Total Initial Cost	\$9,171
Total Monthly Cost	\$324
<b>Water Monitoring Cost Savings</b>	
Bore Runs required of original	35%
Monthly Bore Run Cost	\$1,094
Monthly Cost	\$324
Monthly Total	\$1,418
Cost Savings per month	\$1,708/month
Cost Savings per year	\$20,495/year

***Payback period is less than 6 months.***





**USING FARMBOT**

---

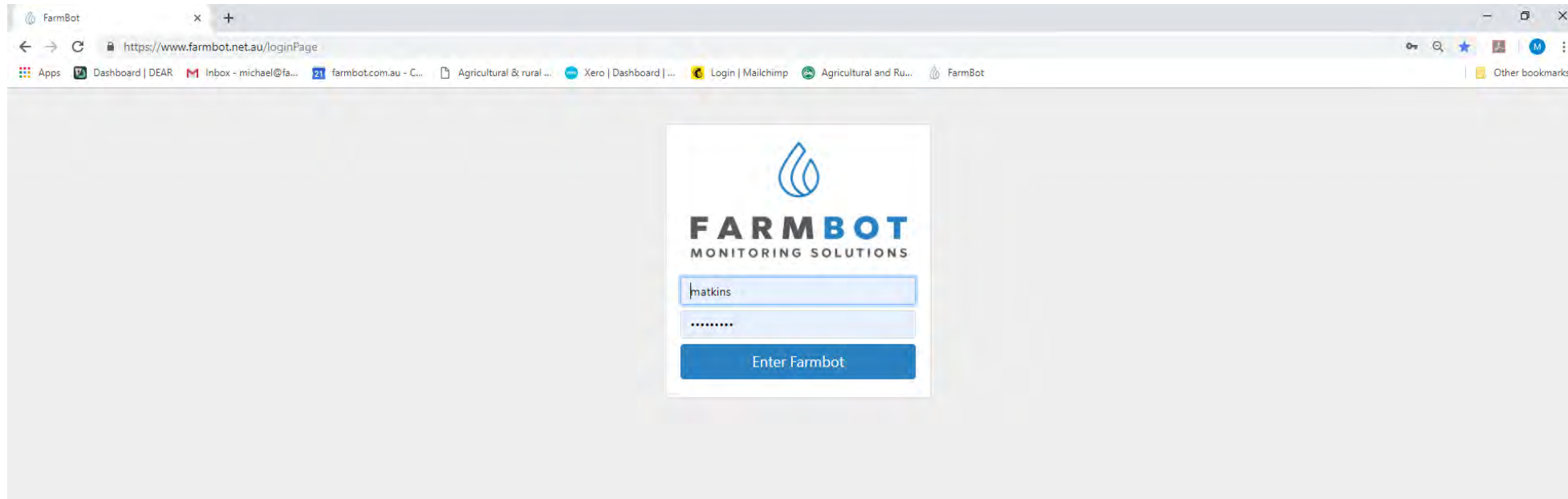
**#KNOWYOURWATER**

---



**FARMBOT**  
MONITORING SOLUTIONS

# Web-based Application – Online Dashboard Login



Access your water resources on any device, anywhere, using a *Username & Password*



Maximum Flow rate exceeded (60 litre/min) Junction Tank Flow 1	83.8 litre/min <a href="#">Action</a>	16:07 26-09-19 <a href="#">Acknowledge</a>	Acknowledged
Water level below Minimum limit (100 cm) North Swamp Header	92.8 cm <a href="#">Action</a>	02:48 27-09-19 <a href="#">Acknowledge</a>	Acknowledged
Water level below Minimum limit (80 cm) Martharinga	80 cm <a href="#">Action</a>	08:37 27-09-19 <a href="#">Acknowledge</a>	Acknowledged
Water level above maximum limit (275 cm) McDonalds	354.9 cm <a href="#">Action</a>	21:20 27-09-19 <a href="#">Acknowledge</a>	Acknowledged

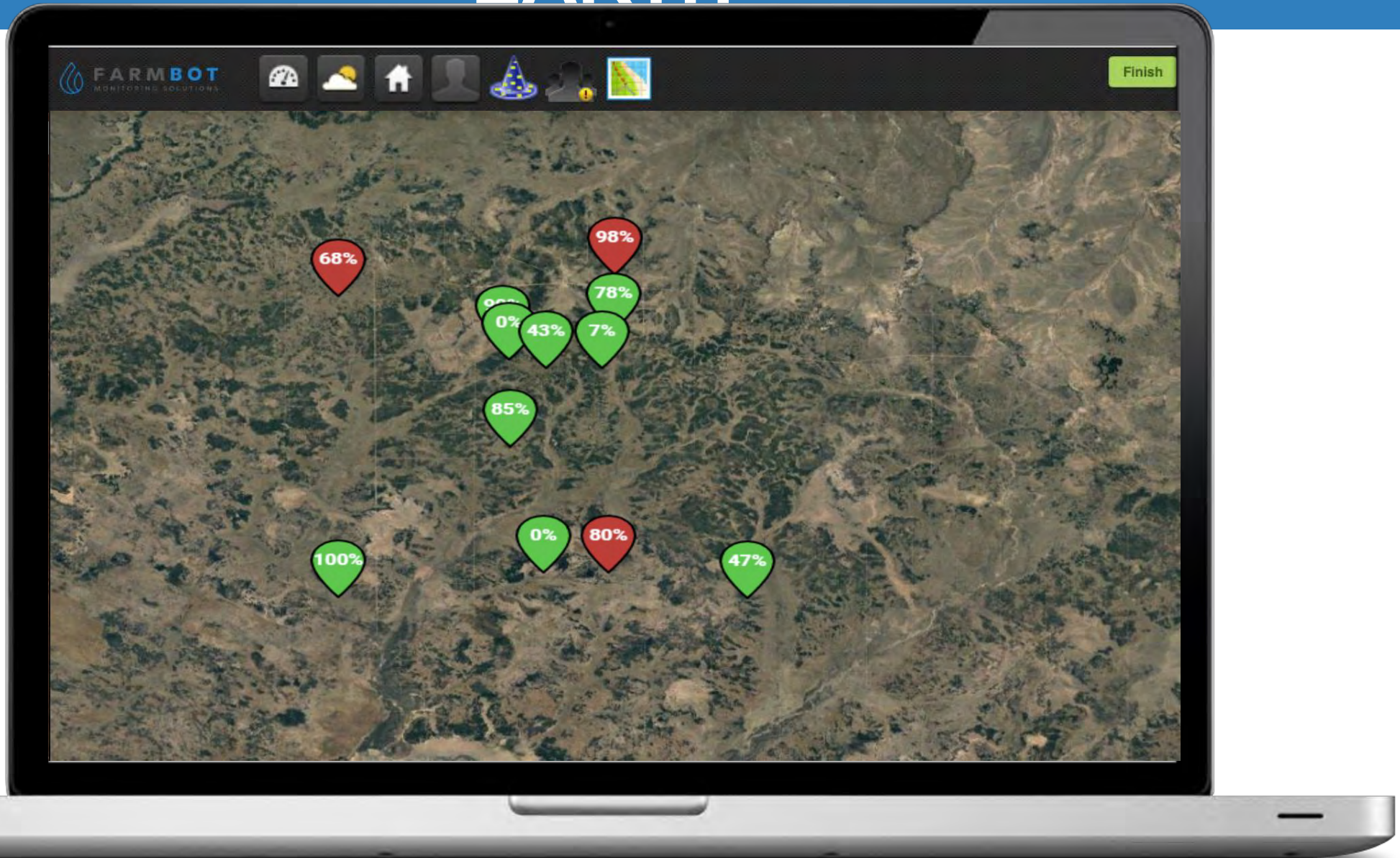
Water Level Status as at: 29-09-19 : 19:16

Sensor	Percent Full	Direction	Value	Alerts
Birthday Well	69%		103.7 cm	-
Bothwells	91%		144.9 cm	-
JRP Header	71%		127.5 cm	-
Junction tank Water Level	83%		174.5 cm	-
Martharinga	71%		95.7 cm	-
Mount Gunson	96%		131.9 cm	-
PeeGee	94%		164.5 cm	-
Ponds	95%		209.8 cm	-
Scrubby	94%		173 cm	-

# YOUR FARMBOT DASHBOARD

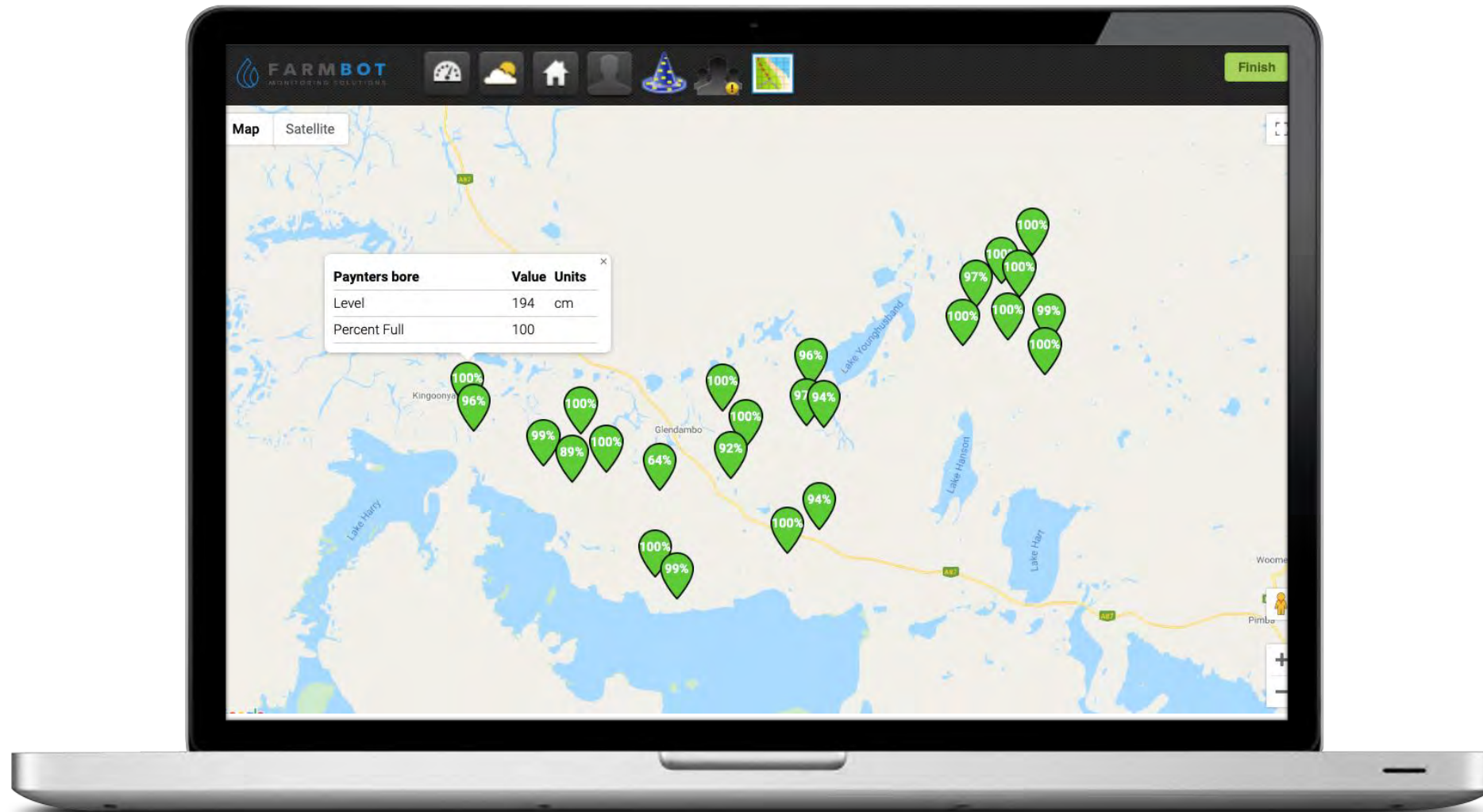
Remote water monitoring makes it possible to check your tanks and dams over a cup of tea in the morning, while planning your day.

# YOUR WATER AT A GLANCE – IN GOOGLE EARTH

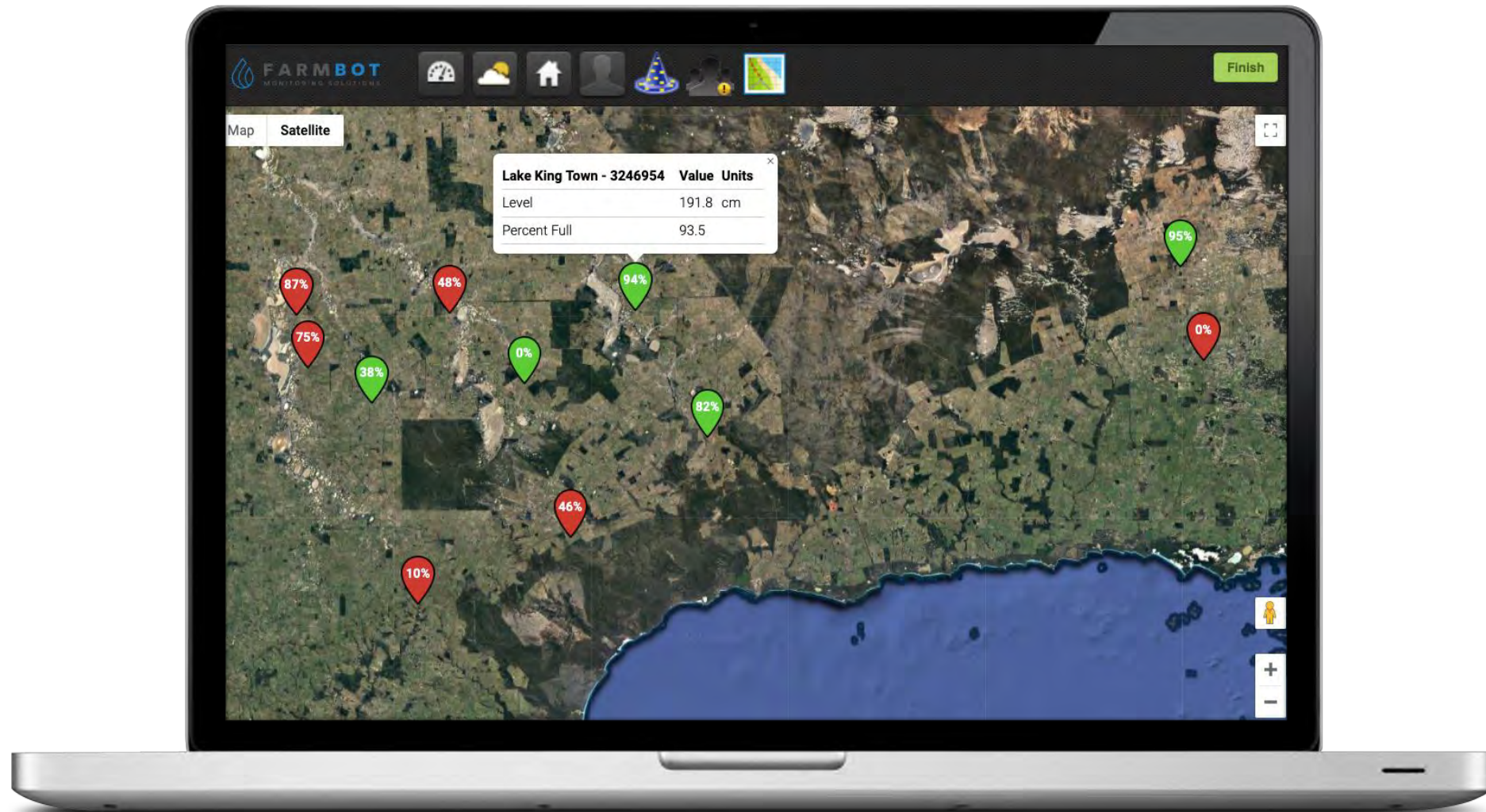





# YOUR WATER AT A GLANCE – IN GOOGLE MAPS




# GPS POSITIONING & GOOGLE EARTH INTEGRATION



# DETAILED INSIGHTS – WATER USE TRENDS

 **Willalooka**      Date: 13:21 26-02-20      [Delete Data](#)      [Delete Sensor Module](#)      [Display Days](#)      [Display Percent](#)      [Alert Triggers](#)      [Finish](#)

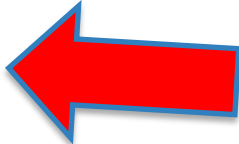
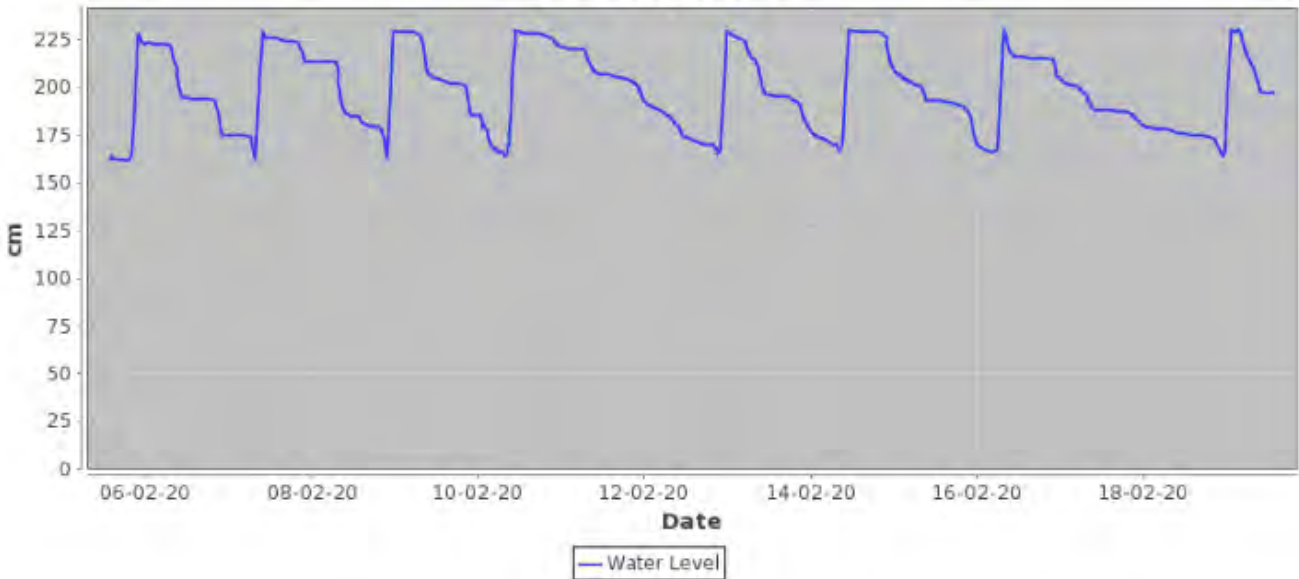
 **W - Camphill 5**      83%      186.2      cm      23:51 26-02-20      **Min** 162.1      **Max** 230.4 cm      [Edit](#)

The level is steady

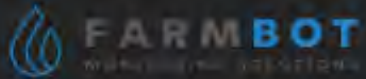
[<< Previous Week](#)

[Next Week >>](#)

**W - Camphill 5**



# REAL-TIME ALERTS – AVOID DISASTERS



Minimum Level




Add Trigger

Finish

Willalooka Pastoral

Date: 23:53 26-02-20

## Alert Trigger Summary for: W - Camphill 5

Trigger Description	State	Value	Last Triggered	
 W - Camphill 5 - Water Level : Maximum Water Level	Enabled	232 cm	18:10 16-02-20	
 W - Camphill 5 - Water Level : Minimum Level	Enabled	70 cm	12:04 19-01-20	
 W - Camphill 5 - Water Level : Excessive Rate of Fall	Enabled	90 cm	12:04 19-01-20	

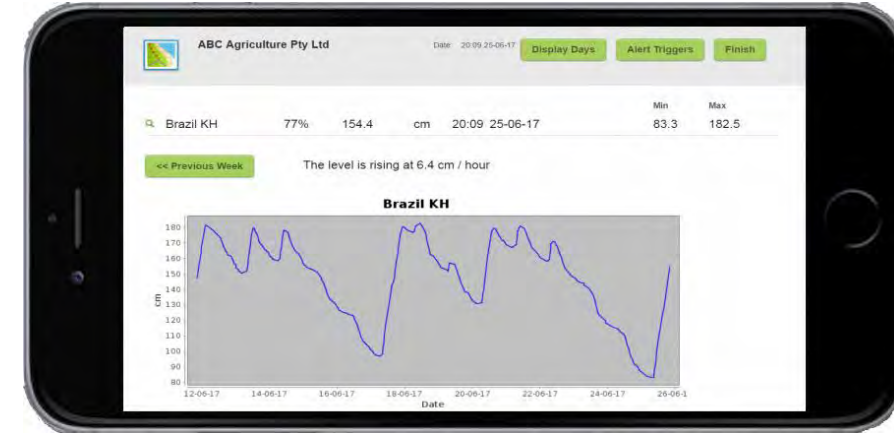
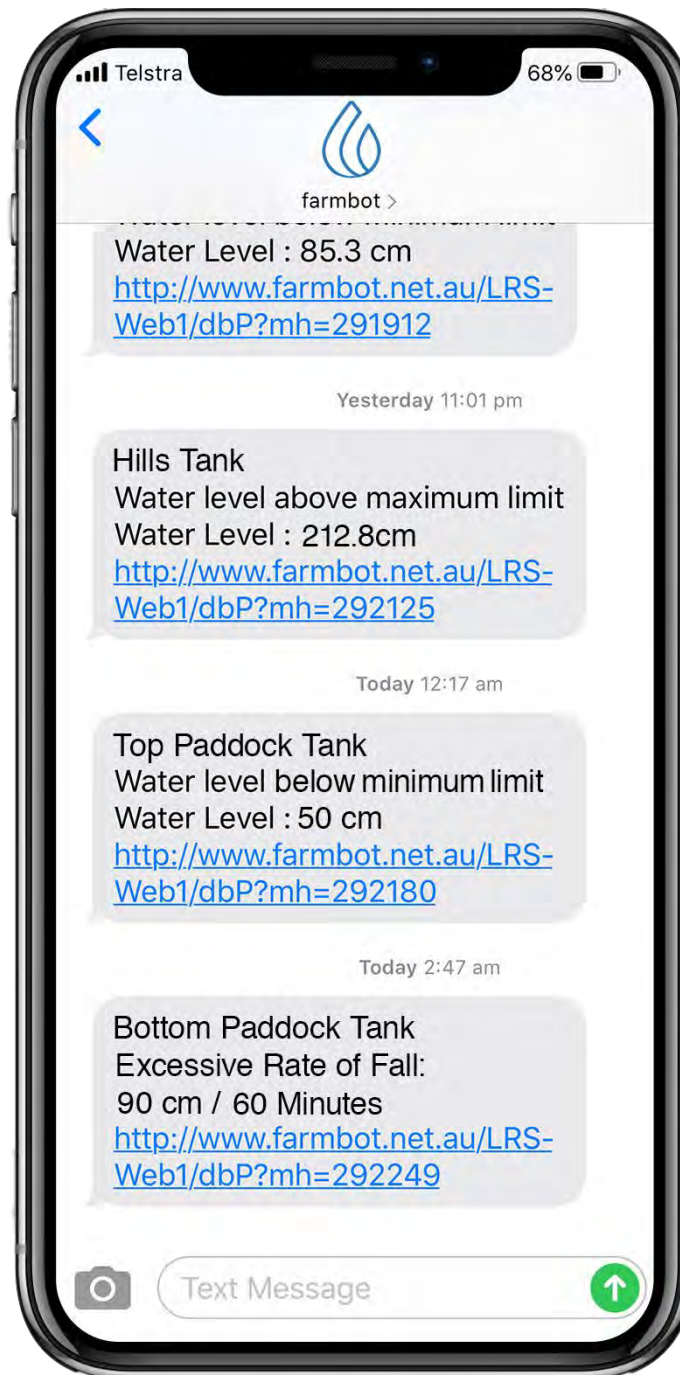


# SMS ALERTS in real time

Maximum level reached

Minimum level reached


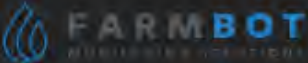
Excessive rate of fall



# YOUR WATER, IN YOUR POCKET



# EASY TO USE – ADJUST ALERTS IN SECONDS

Finish

### Maintain Trigger Details

Date: 13:24 26-02-20

Trigger Desc:

Trigger Type:

Value:  (cm)

Trigger Status:

Alert Message:

State:

Hysteresis:

Maximum Alerts per Day:

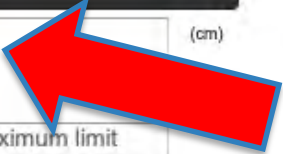
Maximum Alerts per Hour:

Duration:

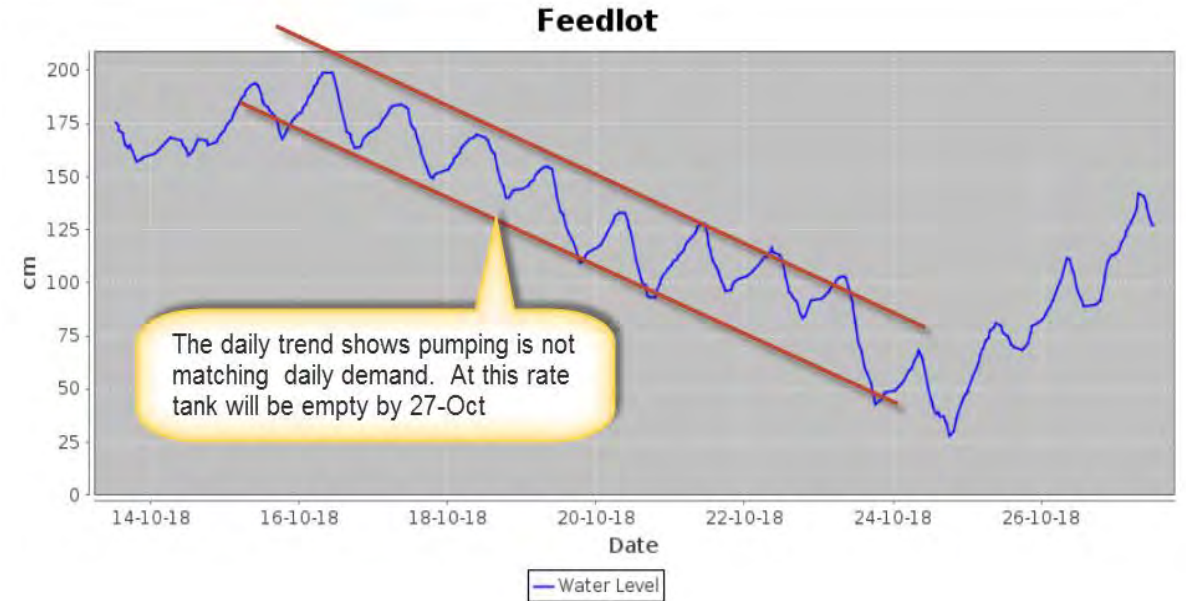
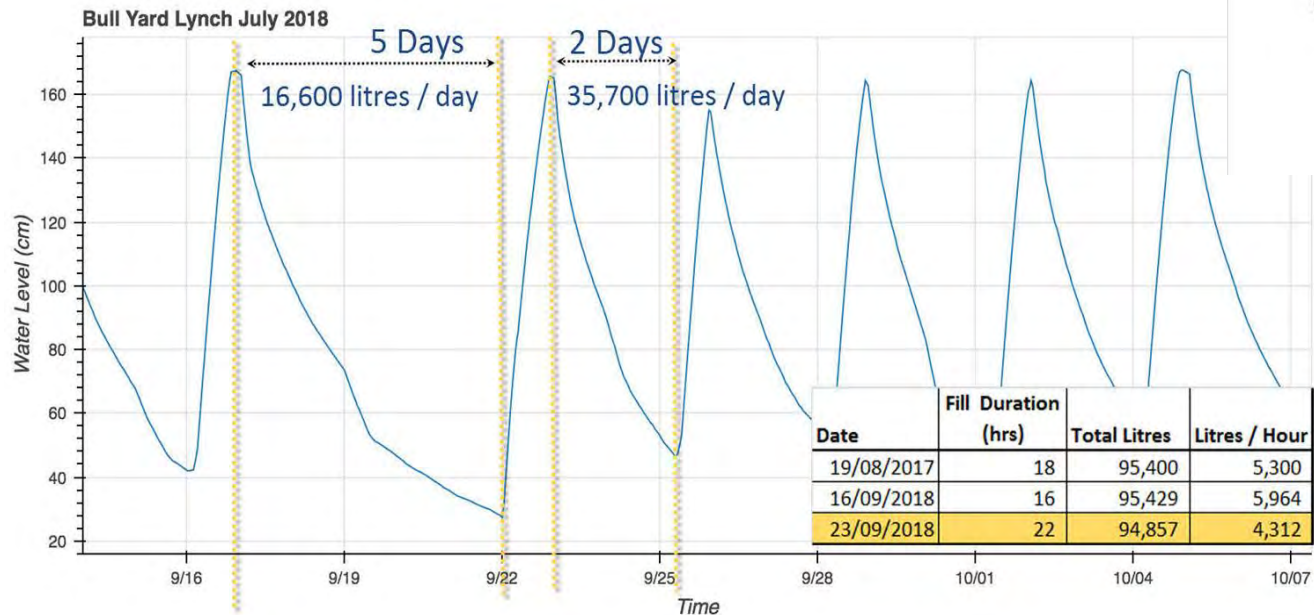
Duration Units:

Last Triggered: 18:10 16-02-20

Last Edited: 16/02/20 9:47:29 PM.000



# VALUE OF ACTIONABLE INSIGHTS



# REMOTELY MONITOR & RECORD RAINFALL



Florina

Select Site

Alert History

Logout

Florina - - Nick Bradley - Super User

Date: 17:10 12-03-20

Alert Message

Value

Time - Date

Rain Gauge Status as at: 12-03-20 : 17:10

## Rain Gauges



**Black Black Tank** [Edit](#)

Today	This Week	This Month	Last Month
0 mm	5 mm	8 mm	34 mm

System is operating correctly [details](#)

**East Hoe Twins** [Edit](#)

Today	This Week	This Month	Last Month
0 mm	2 mm	3 mm	40 mm

System is operating correctly [details](#)

**Mac Hill Overflow Tank** [Edit](#)

Today	This Week	This Month	Last Month
0 mm	0 mm	20 mm	2 mm

System is operating correctly [details](#)

**Outalpa Twin Tank** [Edit](#)

Today	This Week	This Month	Last Month
0 mm	0 mm	8 mm	47 mm

System is operating correctly [details](#)

**Shorts Transfer** [Edit](#)

Today	This Week	This Month	Last Month
0 mm	4 mm	22 mm	0 mm

System is operating correctly [details](#)





# RAINFALL DATA – ACCESS ANY TIME

The screenshot displays the FARMBOT web interface for a user named Nick Bradley. The main content area is titled "RAINFALL: Waterview Turkey Nest" and shows a report for the period 07/Jan/2020 to 05/Feb/2020. The report includes a table of daily rainfall data and a corresponding bar chart.

**User Profile:** S&N Daley - - Nick Bradley - Super User

**Alert Message:** Rain Gauge Status as at: 05-02-20 : 10:28

**Summary Table:**

Today	This Week	This Month
29 mm	41 mm	41 mm

**Daily Rainfall Data Table:**

Date	Rain (mm)
2020-01-17 (Fri)	33.2
2020-01-18 (Sat)	0
2020-01-19 (Sun)	0
2020-01-20 (Mon)	0
2020-01-21 (Tue)	0
2020-01-22 (Wed)	25.4
2020-01-23 (Thu)	0
2020-01-24 (Fri)	4.3
2020-01-25 (Sat)	0
2020-01-26 (Sun)	0

**Bar Chart:** A bar chart showing rainfall in mm for each day from 2020-01-07 to 2020-02-05. The y-axis ranges from 0 to 35 mm. The chart shows significant rainfall on 2020-01-17 (33.2 mm) and 2020-01-22 (25.4 mm). Other days with rainfall are 2020-01-15 (11.7 mm), 2020-01-16 (6.3 mm), 2020-01-24 (4.3 mm), 2020-02-03 (6.4 mm), 2020-02-04 (5.2 mm), and 2020-02-05 (29.6 mm).

# FARMBOT FLOW MONITORING



ABC Agriculture Pty Ltd

Date: 03:51 24-07-19

Display Days

Display Percent

Alert Triggers

Finish

						Min	Max	
Q	Tank level	95%	184.8	cm	14:09 24-07-19	162.2	187.1 cm	<a href="#">Edit</a>
Q	Flow in	0%	0	litre/min	14:09 24-07-19	0	152.6 litre/min	<a href="#">Edit</a>
Q	Flow out	0%	0	litre/min	14:09 24-07-19	0	93.7 litre/min	<a href="#">Edit</a>
Q	Flow out 2	5%	9.5	litre/min	14:09 24-07-19	0.7	100.6 litre/min	<a href="#">Edit</a>



The level is steady

Tank level

<< previous 2 days

next 2 days >>

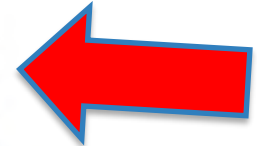
Jul 23 - Jul 24

Days

Summary

Flow in	48840 litres
Flow out	38530 litres
Flow out 2	29370 litres

SHOW DETAILS



# FARMBOT PRESSURE MONITORING



ABC Agriculture Pty Ltd

Date: 03:51 24-07-19

Display Days

Display Percent

Alert Triggers

Finish



Pumps

21%

167.7

kPA

14:15 24-07-19

Min

48.6

Max

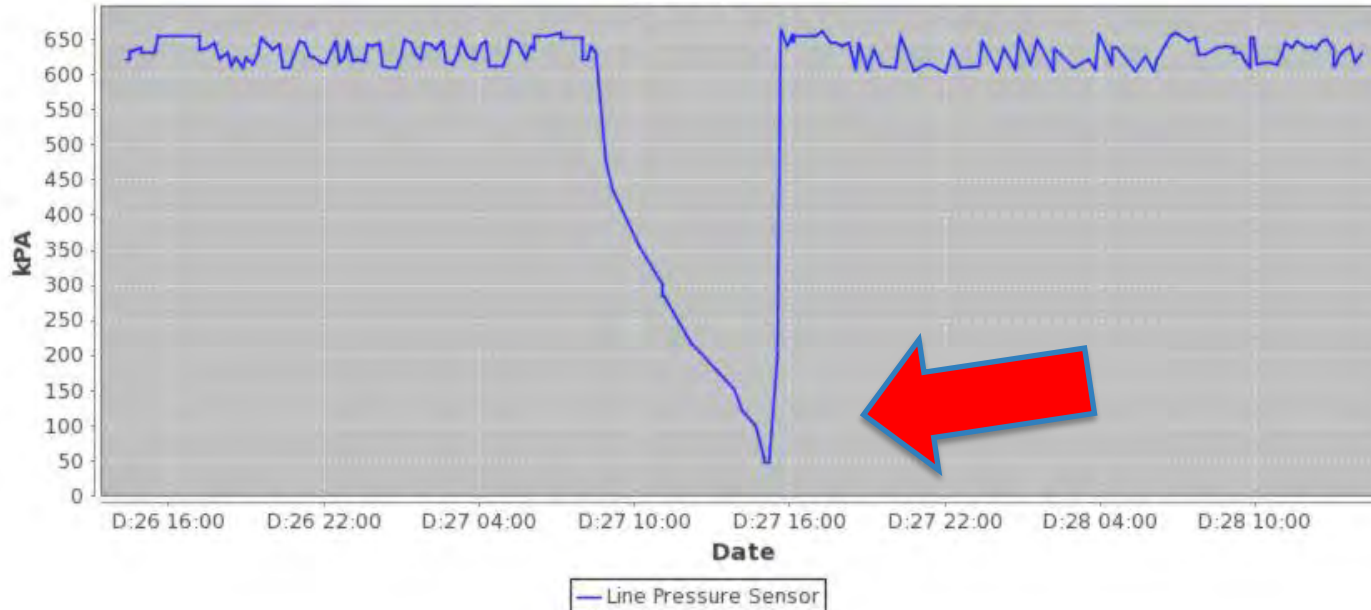
664.3 kPA

Edit

<< Previous Day

Next Day >>

### Pumps



# FARMBOT BORE MONITORING



ABC Agriculture Pty Ltd

Date: 03:51 24-07-19

Display Days

Display Percent

Alert Triggers

Finish



Bore 1

44%

22

m

13:55 24-07-19

Min

2.8

Max

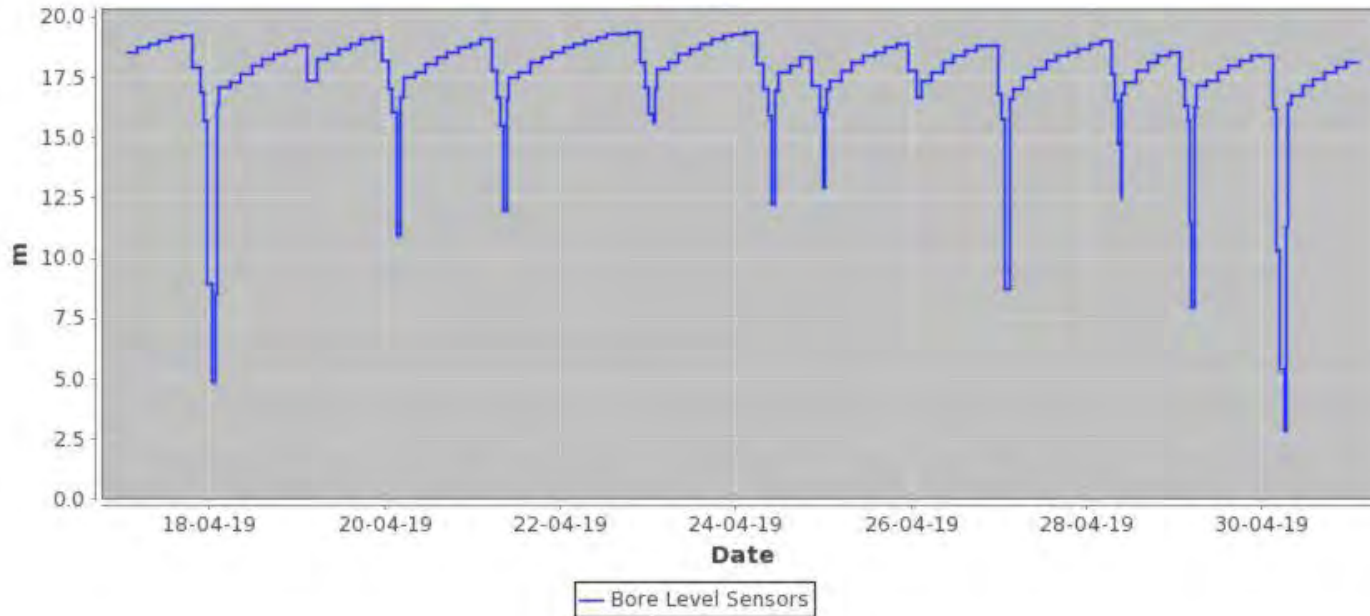
19.4 m

Edit

<< Previous Week

Next Week >>

### Bore 1



# FARMBOT FENCE MONITORING



Artimore

Date: 12:46 26-02-20

Delete Data

Delete Sensor Module

Display Weeks

Display Percent

Alert Triggers

Finish



K7

100%

310

cm

23:16 26-02-20

Min

Max

281

318.5 cm

Edit



Kildonan Electric Fence

2%

6

Power

23:16 26-02-20

0

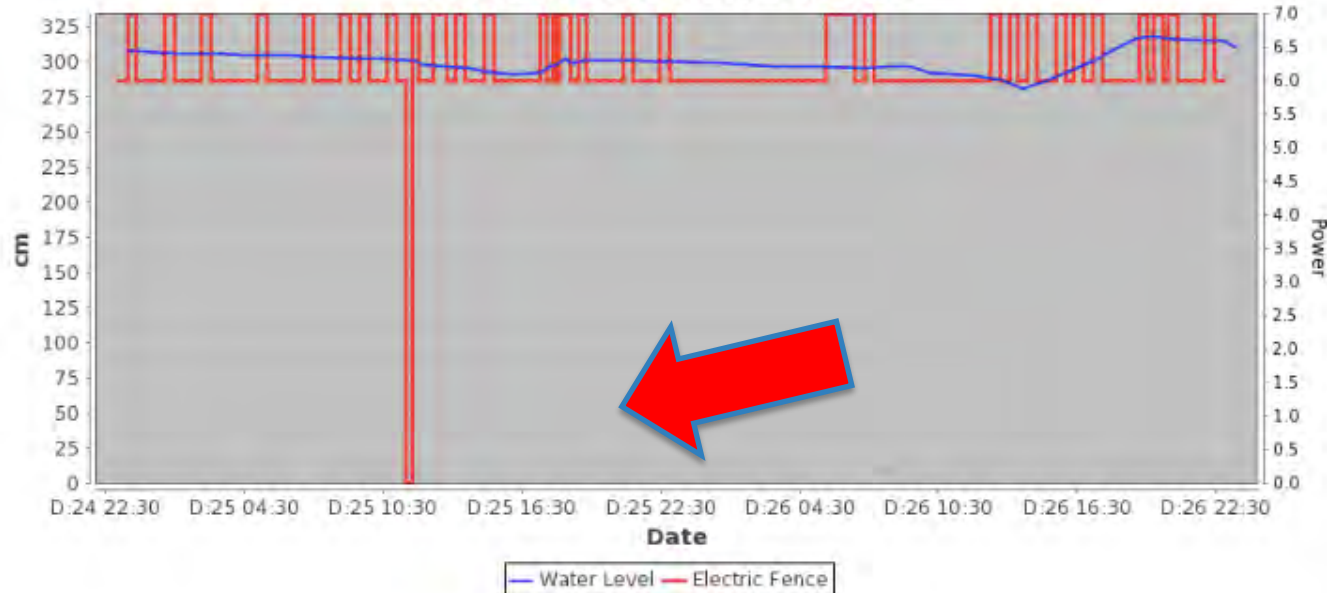
7 Power

Edit

The level is falling at 0.7 cm / hour

<< Previous Day

## Water Level-Electric Fence



# AND WE GET A TICK OF APPROVAL

---



“WE CAN HIGHLY RECOMMEND THE FARBOT SYSTEM AND THE AMAZING SERVICE THAT WE HAVE RECEIVED DURING THE TIME WE HAVE OWNED THE UNITS.”

*DAVID BARRETT,*  
MOUNT OX, THEODORE QLD

---

“OCCASIONALLY IN THE IT WORLD, AN INNOVATION COMES ALONG THAT WE **GRAB WITH BOTH HANDS AND DESCRIBE AS A ‘NO BRAINER’**. THIS HAS BEEN ONE OF THOSE FOR US

*C.H MACLACHLAN,*  
JUMBUCK PASTORAL

IMAGES  
OF  
**FARMBOT**  
@ WORK

























 **FARMBOT**  
MONITORING SOLUTIONS



# PARTNERS & AWARDS



PEOPLE. LAND. OPPORTUNITY.



# THE EXPERIENCED TEAM BEHIND FARMBOT



**ANDREW COPPIN**  
MANAGING DIRECTOR



**CRAIG HENDRICKS**  
COO/FOUNDER



**HAMISH GRIFFIN**  
CFO



**TESS O'HAGAN**  
CSO



**PASCAL HENDRICKS**  
PRODUCT  
DEVELOPMENT R&D



**ALEX MANTAUT**  
LEAD SOFTWARE  
ENGINEER



**RACHAEL DUNN**  
BDM – Northern  
Regions



**MARY CARTER**  
HEAD OF MARKETING

**THANK YOU**



**FARMBOT**  
MONITORING SOLUTIONS

#knowyourwater

**RACH DUNN**

RACHAEL@FARMBOT.COM.AU

0406 897 575

