

Mountain coolibah woodlands



| | |
|-------------------------------------|---|
| Landform | Undulating downs. |
| Woody vegetation | Mountain coolibah open woodland with occasional silver-leaved ironbark and gum-topped bloodwood. Black tea tree occurs along drainage lines. Understorey is generally sparse, but shrubby layer of currant bush, Leichhardt bean, black wattle, corkwood wattle, bauhinia, emu apple, limebush or boonaree may develop in some areas. |
| Expected pasture composition | * Denotes non-native "Expected Pasture Composition" species. |
| Preferred | Kangaroo grass, black speargrass, Queensland bluegrass, desert bluegrass, forest bluegrass, cotton panic, silky browntop. |
| Intermediate | Pitted bluegrass, native millet, yabila/star grass, barbwire grass, curly windmill grass. |
| Non-preferred | White speargrass, feathertop wiregrass, fairy grass, bottlewasher grasses, lovegrasses. |
| Annual grasses | Flinders grass, button grass. |
| Suitable sown pastures | Angleton grass, Bambatsi panic, creeping bluegrass, butterfly pea (>90 cm) and Caatinga stylo on deeper soils. Caribbean and shrubby stylos on shallow and rocky soils. |
| Introduced weeds | Parthenium, mimosa. |
| Soil | Self-mulching brown or black cracking clay (brown or black vertosol). |
| Description | Surface: Strong and fine self-mulching, common basaltic fragments; Surface texture: medium clay; Subsoil texture: medium to heavy clay. |
| Water availability | Low |
| Rooting depth | Below 45 cm. |

| | |
|-----------|---|
| Fertility | Low to moderate total nitrogen, low to moderate phosphorus. |
| Salinity | Low |
| Sodicity | Non-sodic |
| pH | Strongly alkaline. |

Long-term carrying capacity information (A condition)

| Based on fully watered area for 1AE = 450 kg animal consuming 8kg DM/day | | | | |
|--|--|--|--|-----------------|
| Median annual rainfall 521 – 645 mm | | | | |
| Pasture type | Median tree cover (TBA m ² /ha) (FPC %) | Median annual pasture growth (DM kg/ha) | Safe annual utilisation pasture growth (%) | LTCC (ha/AE) |
| Native species | 0 TBA/FPC | 2510 - 3000 | 20% | 4.9 – 5.8 |
| | 5 TBA 13 FPC | 1720 - 2320 | 20% | 6.3 – 8.5 |

Enterprise

Growing and finishing.

Land use and management recommendations

- In open areas, fire is only useful to remove older (rank) grass.
- Burning should occur only after adequate rainfall; a dry, hot fire could kill the grass.

Land use limitations

- Not usually suited to cropping as soils are too shallow.
- Parthenium weed invasion potential.

Conservation features and related management

- In the Springsure area these woodlands are associated with a rare ironbark (*Eucalyptus sicilifolia*) that has a very restricted distribution.
- Woodlands provide good koala and spectacled-hare wallaby habitat.
- The pebble-mound mouse is found in this land type. The pebble-mound mouse forms little stone volcano-like craters/mounds and they access entrances to a burrow system under these mounds.
- Even though these areas are usually on rocky and high slopes it is possible that they can become overgrazed with severe shrub regrowth occurring at the base of the mountain coolibah trees.
- It is important to stock these areas according to their capacity, especially where they occur as small remnants in cultivated paddocks.
- If overgrazed these areas can become severely infested with parthenium that could spread down slope during wet seasons.

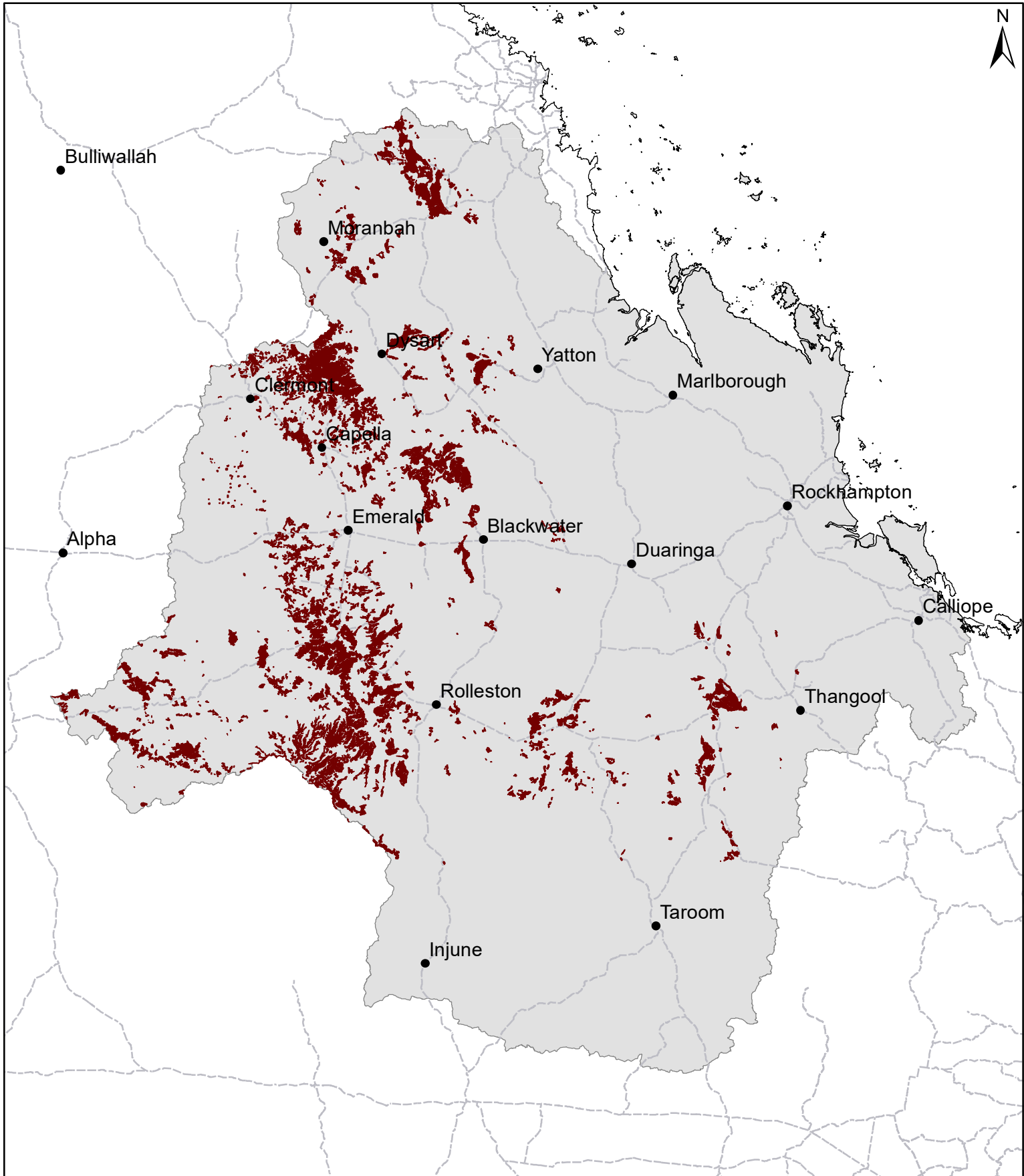
Regional Ecosystems

11.4.13, 11.8.2, 11.8.5a, 11.11.11, 11.12.2a.

Land units; Agricultural management unit; Soil associations

Land units (Gunn *et al* 1967; Story *et al* 1967) Waterford 1, Oxford 1, Craven 3, Kinsdale 2, Bedourie 1, Girrah 1; AMU (DPI 1993) Orion, Jimbaroo; Soil associations (Burgess 2003) Carfax, Kirkcaldy.

FT19 Mountain coolibah woodlands



Area of land type in region: 4%
Median rainfall (region): 494 – 830 mm
Average rainfall (region): 560 – 869 mm
Area of land type with FPC: 43%
Median FPC: 13%
Median TBA: 5 m²/ha



**Queensland
Government**