

Yellowjacket country



Landform	Tableland.
Woody vegetation	Yellowjacket woodland with understorey of pretty wattle, desert oak and heartleaf poison bush.
Expected pasture composition	* <i>Denotes non-native "Expected Pasture Composition" species.</i>
Preferred	Soft spinifex, black speargrass, silky umbrella grass, hairy panic, cotton panic, kangaroo grass, plume sorghum.
Intermediate	Golden beard grass, silky oil grass, white grass.
Non-preferred	Wiregrasses (particularly Jericho, dark), wanderrie grasses, buck spinifex, bottlewasher grasses, lovegrasses, five-minute grass.
Annual grasses	Fire grass, kerosene grass (non-preferred).
Common forbs	Flannel weeds (non-preferred).
Suitable sown pastures	Not suitable for sown pastures.
Introduced weeds	
Soil	Red sand (kandosol).
Description	Surface: Firm to friable; Surface texture: sandy loam; Subsoil texture: sandy clay loam.
Water availability	Low

Rooting depth	0.6–0.9 m.
Fertility	Low total nitrogen; low phosphorus.
Salinity	Non-saline
Sodicity	Non-sodic
pH	Acid to neutral.

Long-term carrying capacity information (A condition)

Based on fully watered area for 1AE = 450 kg animal consuming 8kg DM/day				
Median annual rainfall 581– 604 mm				
Pasture type	Median tree cover (TBA m ² /ha) (FPC %)	Median annual pasture growth (DM kg/ha)	Safe annual utilisation pasture growth (%)	LTCC (ha/AE)
Native species	0 TBA/FPC	2650 - 2980	20%	4.9 – 5.5
	13 TBA 32 FPC	740 - 880	20%	17 – 20

Enterprise

Breeding

Land use and management recommendations

- Not suitable for development.
- Recharge area.

Land use limitations

- Intake area for salinity management.
- Heartleaf poison bush.

Conservation features and related management

- These woodlands provide important habitat trees for arboreal fauna. In some areas the number of larger sized habitat trees has decreased as a result of logging.
- The woodlands provided habitat for rare and threatened flora species *Grevillea singuliflora*, *Homoranthus decumbens*, *Acacia chinchillensis* and *Dodonaea macrossanii*. Habitat for localised *Acacia johnsonii*.
- These woodlands may include species with restricted and disjunct distributions including *Eucalyptus suffulgens* and *Corymbia bunites*.

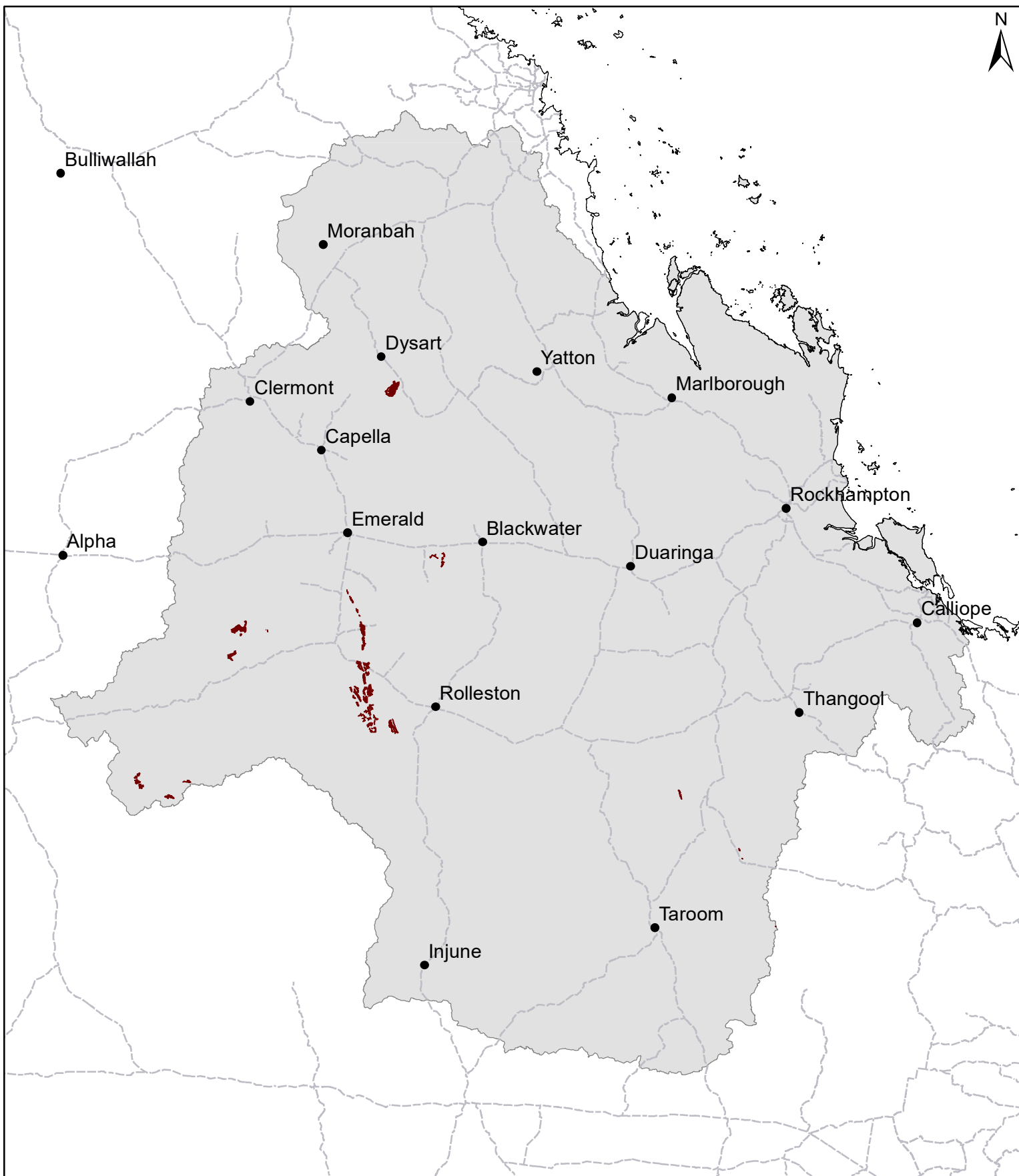
Regional Ecosystems

11.10.1a, 11.10.13b, 11.12.5, 11.12.20.

Land units; Agricultural management unit; Soil associations

Land units (Gunn *et al* 1967) Ronlow 1.

FT31 Yellowjacket country



Area of land type in region: 0.1%
Median rainfall (region): 494 – 830 mm
Average rainfall (region): 560 – 869 mm
Area of land type with FPC: 91%
Median FPC: 32%
Median TBA: 13 m²/ha



Queensland
Government