

# Coolibah floodplains



<b>Landform</b>	Flat plains (0–1%).
<b>Woody vegetation</b>	Coolibah, river red gum, black box, myall, poplar box, yapunyah, lignum and gidgee.
<b>Expected pasture composition</b>	* Denotes non-native “Expected Pasture Composition” species.
Preferred	Forest bluegrass, Queensland bluegrass, buffel grass*.
Intermediate	Mitchell grass (bull), golden beard grass, early spring grass, neverfail, native millet.
Non-preferred	Weeping lovegrass, umbrella canegrass, rat’s tail couch, fairy grass.
Legumes	Sesbania pea, gilgai darling pea.
Annual grasses	Red Flinders grass.
<b>Suitable sown pastures</b>	Bambatsi, Angleton grass, purple pigeon grass, desmanthus, medic (barrel) Caatinga stylo. Leucaena where not frequently or severely flooded. Short term (2 to 5 years) lucerne, burgundy bean, snail medic.
<b>Introduced weeds</b>	Bathurst burr, Noogoora burr, lippia, parkinsonia, parthenium.
<b>Soils</b>	Soils are deep cracking clays (black or brown vertosol).
Description	<b>Surface:</b> Fine self-mulching; <b>Surface texture:</b> medium heavy clay; <b>Subsoil texture:</b> heavy clay.
Water availability	Low
Rooting depth	Moderate
Fertility	Low total nitrogen; high phosphorus.
Salinity	Deep subsoils are highly to very highly saline.

Sodicity

Subsoils are sodic to strongly sodic.

pH

Strongly alkaline.

**Long-term carrying capacity information (A condition)**

Based on fully watered area for 1AE = 450 kg animal consuming 8kg DM/day				
Median annual rainfall 400 – 615 mm				
Pasture type	Median tree cover (TBA m <sup>2</sup> /ha) (FPC %)	Median annual pasture growth (DM kg/ha)	Safe annual utilisation pasture growth (%)	LTCC (ha/AE)
Native species	0 TBA/FPC	1180 - 2330	30%	4.2 – 8.3
	7 TBA 18 FPC	550 - 1360	30%	7.2 – 18

**Enterprise**

Growing and Finishing.

**Land use and management recommendations**

- Mainly grazing of sheep and cattle on native pastures.
- Suitable for pasture improvement.

**Land use limitations**

- Establishment problems with improved pastures due to crusting / cracking or coarse self-mulching surface.
- Restricted access in wet conditions.
- Flooding is a moderate hazard.
- Potential for weed invasion from upstream sources following flooding.
- Overgrazing native pastures may lead to an invasion of lippia.
- Dense stands of burrs (galvanised) and broad-leaved plants (pigweed) may limit pasture growth, productivity and be toxic to stock.

**Conservation features and related management**

- These grassy woodlands provide habitat for rare and threatened species (e.g. squatter pigeon, black-chinned honeyeater, little pied bat, and powerful owl).
- Coolibah flood plains are very important for a whole suite of woodland-dependant birds (e.g. finches, fairy wrens, brown tree creeper and speckled warbler).
- Mature trees provide hollows for nesting birds, possums and gliders, and some hollow-dwelling reptiles like the freckled monitor (a small goanna) and the pale-headed snake.
- The tussock grasses provide habitat and refuge for mammals such as bandicoots, swamp wallabies and rufous bettongs.
- These areas have incurred extensive modification to the tree canopy structure, including the removal of large hollow-bearing trees, and to the ground layer and cover of tussock grasses.
- Coolibah floodplains are adapted to periodic flooding events, and hydrological changes (e.g. damming upstream, levee banks) can threaten the long term health of this system, and impact on episodic regeneration events. Parkinsonia and parthenium have invaded some areas.
- Maintenance of ground cover is important to minimise risk of sheet and gully erosion, reduce runoff, improve water quality and protect the wildlife habitat.
- Vigilance in controlling weed and feral animals can help prevent the degradation of these areas.

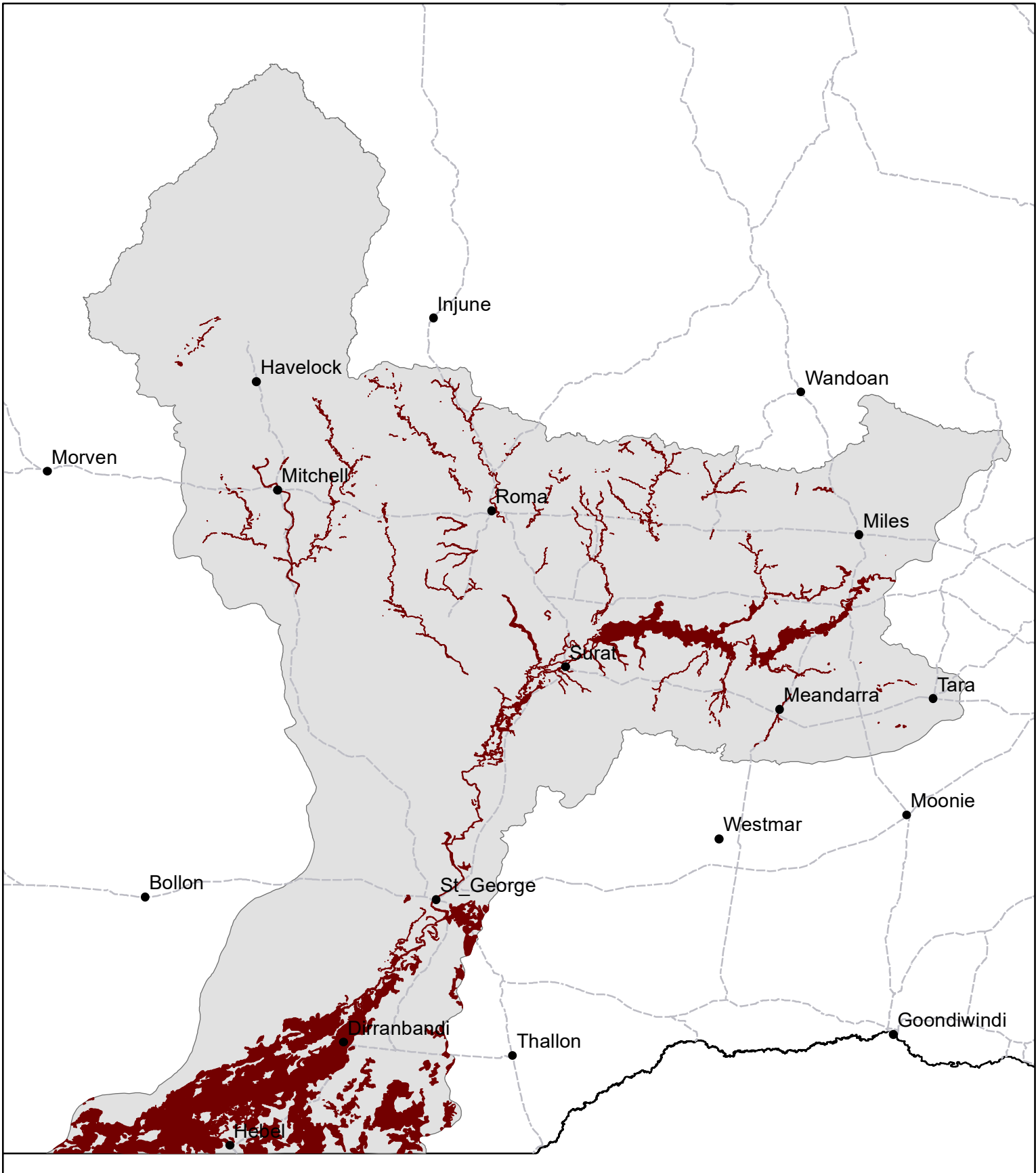
**Regional Ecosystems**

6.3.3, 6.3.25, 11.3.3, 11.3.37, 11.3.4, 11.3.15, 11.3.15a, 11.3.16, 11.3.25, 11.3.27i, 11.3.28.

**Land units; Map units; land resource areas, Soil associations**

Land Units (Galloway *et al* 1974) 71; Map Units (DPI 1984) 32a, 32b; LRA, Soil Associations (DPI 1996) Clay Alluvial Plains, Condamine1b; LRA (DPI 1987) 6 - Balonne.

# MB05 Coolibah floodplains



Area of land type in region: 7%  
Median rainfall (region): 400 – 615 mm  
Average rainfall (region): 438 – 630 mm  
Area of land type with FPC: 36%  
Median FPC: 18%  
Median TBA: 7 m<sup>2</sup>/ha



**Queensland  
Government**