

Pebbly downs



Photo: F5 (Vergemont) Land System

General description	Flat to very gently sloping open Mitchell grass plains on moderately cracking clay soils with ironstone or gidgee stone cover prominent. Can be dominated by sparse forbland or annual grassland. Generally drain into open or wooded alluvial plains and adjacent to soft mulga and/or hard gidgee.
Landform	Flat to very gently sloping plains.
Woody vegetation	Scattered whitewood, vine tree, leopardwood, boonaree and occasionally western bloodwood or cassias.
Expected pasture composition	* Denotes non-native "Expected Pasture Composition" species.
Preferred	Mitchell grass (mainly barley), Queensland bluegrass, finger panic.
Intermediate	Star grass/native millet, lovegrasses, knottybutt grass, bottlewasher grasses.
Non-preferred	Feathertop.
Annual grasses	Flinders grass, button grass, downs couch, pepper grass.
Common forbs	Native legumes (e.g. grey rattlepod, glycine, rhynchosia), lamb's tongue, daisy burr, wild carrot, sida, potato bush, saltbush (e.g. Mueller's), pigweed, red spinach, soda bush. Non-preferred species include black roly poly, goathead burr, gidgee burr, copperburrs, roly poly.
Suitable sown pasture	Not suitable for sown pastures.
Introduced weeds	Parthenium, mesquite (hybrid), prickly acacia, Bathurst burr.
Soil	Deep, red clays with self-mulching surfaces dominated by scattered stones through to stone pavement in parts with some shallower clay soils. Clay soils moderately cracking to depth.
Description	Surface: Self-mulching with stone cover; Surface texture: heavy clay; Subsoil texture: heavy clay.
Features	Prevalent ironstone and gidgee stone cover. Gilgai depressions benefit from run-on. Gypsum is present at depth.
Water availability	Moderate

Rooting depth	Deep
Infiltration	High initially on a dry soil profile, slowing to moderate levels after 35 mm of rain as cracks close and to low levels after 60 mm of rain. High runoff following 60 mm of rain. Estimates based on low to moderate intensity storm rain.
Fertility	Moderate
Salinity	Non-saline at surface, increasing to very high levels with depth.
Sodicity	Non-sodic at surface; subsoils sodic.
pH	Neutral to mildly alkaline throughout profile.

Long-term carrying capacity information (A condition)

Based on fully watered area for 1AE = 450 kg animal consuming 8kg DM/day				
Median annual rainfall 291 – 391 mm				
Pasture type	Median tree cover (TBA m ² /ha (FPC %))	Median annual pasture growth (DM kg/ha)	Safe annual utilisation pasture growth (%)	LTCC (ha/AE)
Native species	0 TBA/FPC	240 - 680	22%	20 - 55
	2 TBA 6 FPC	160 - 350	22%	38 – 83

Enterprise Breeding, fattening and wool production.

- Land use and management recommendations**
- Suitable for grazing of native pastures.
 - Rotational wet season spelling to maintain perennial pasture composition.
 - Maintain adequate ground cover to minimise soil erosion.

- Land use limitations**
- Lack of shade and browse trees.
 - Seasonal prominence of poisonous plants, such as pimelea.
 - Light clay soils that require 25–50 mm of rain for Mitchell grasses to grow.

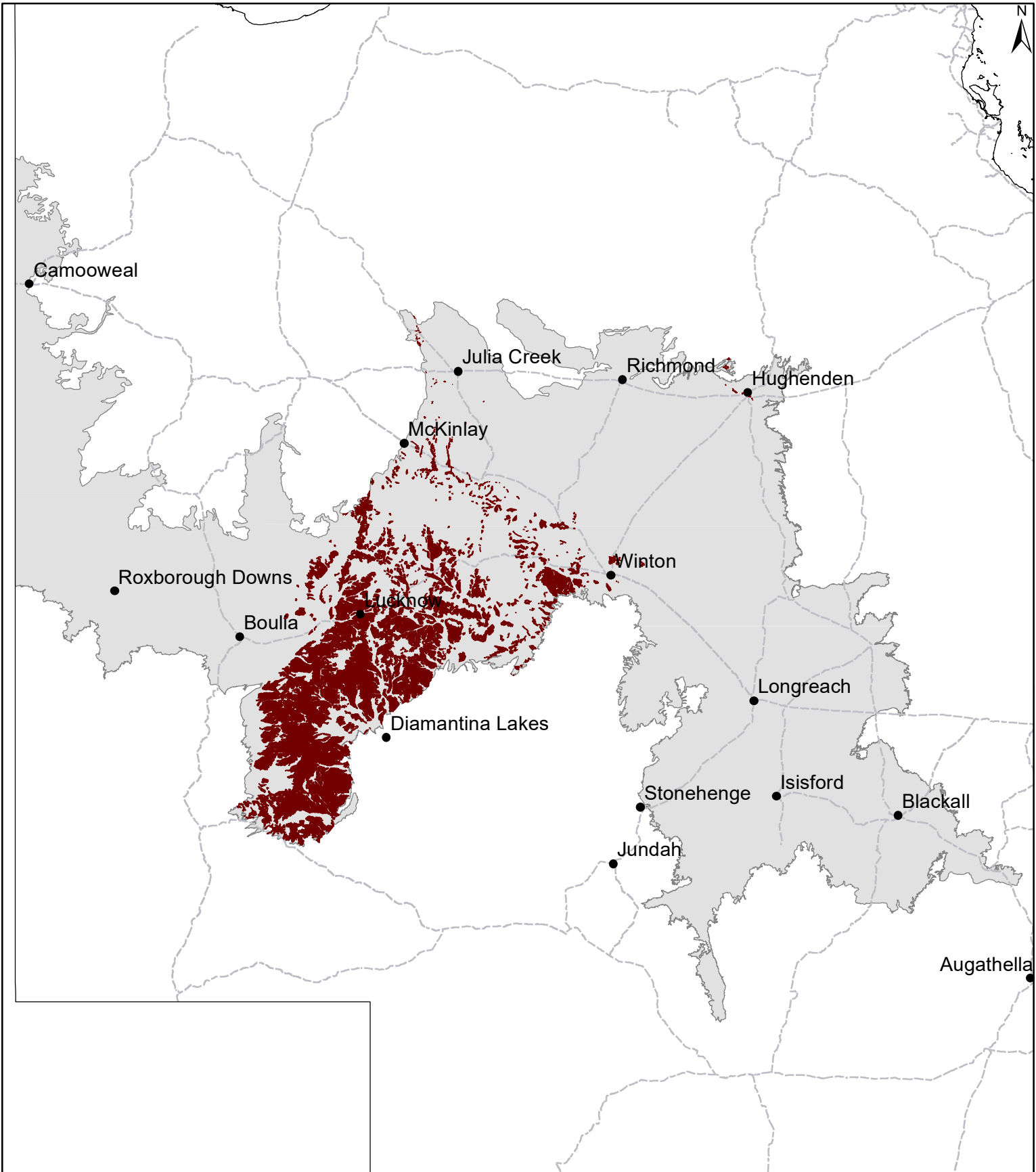
- Conservation features and related management**
- Potential habitat for rare and threatened fauna including bilby, kowari and plains wanderer.

Regional Ecosystems 4.4.1x5, 4.4.1x6, 4.9.2a, 4.9.5, 4.9.5a, 4.9.5b, 4.9.5d.

WARLUS land systems

I	II	III	IV	V	VI
F2, F3	F2, F3, F4	F1		F5	F4

MGD03 Pebbly downs



Area of land type in region: 7%
Median rainfall (region): 233 – 494 mm
Average rainfall (region): 253 – 533 mm
Area of land type with FPC: 6%
Median FPC: 6%
Median TBA: 2 m²/ha



**Queensland
Government**