

Wooded downs



Photo: T3 (Mackunda) Land System

General description

Flat to gently undulating open wooded plains dominated by Mitchell grass and other short grasses on clay soils, often with seasonal scalding and light stone cover. Generally drain into open or wooded alluvial plains and adjacent to hard gidgee, open downs or eucalypt woodlands.

Landform

Flat to gently undulating plains.

Woody vegetation

Bauhinia, whitewood, boonaree, eastern dead finish, ironwood, vine tree, leopardwood, patchy gidgee or boree and occasionally mimosa, gundabluie, broom bush. Often with a false sandalwood layer and occasionally cassia or turkey bush.

Expected pasture composition

* Denotes non-native "Expected Pasture Composition" species.

Preferred

Mitchell grasses, Queensland bluegrass, buffel grass*.

Intermediate

Knottybutt grass, bottlewasher grasses, katoora, lovegrasses.

Non-preferred

Feathertop, fairy grass.

Annual grasses

Button grass, downs couch.

Common forbs

Sida, potato bush, pigweed, red spinach, soda bush. Non-preferred species include black roly poly, goathead burr, gidgee burr, copperburrs, roly poly.

Suitable sown pasture

Not suitable for sown pastures.

Introduced weeds

Parthenium, rubbervine, mother-of-millions, cactus (snake, devil's rope, harrisia and coral), mesquite (hybrid), spiked malvastrum, prickly acacia.

Soil

Shallow to moderately deep grey and brown clays and minor texture contrast soils. Clay soils moderately cracking to depth.

Description

Surface: Moderate crust; **Surface texture:** heavy clay; **Subsoil texture:** heavy clay.

Features

Light stone cover. Ironstone and lime occurs throughout the profile.

Water availability

Moderate to low.

Rooting depth

Variable, moderately deep to shallow.

Infiltration

Moderate to low initially on a dry soil profile, slowing to low levels after 25–35 mm of rain as cracks close. Increasing runoff following 35 mm of rain. Estimates based on low to moderate intensity storm rain.

Fertility

Moderate

Salinity

Non-saline at surface, increasing to moderate levels in subsoils.

Sodicity

Non-sodic

pH

Moderately to strongly alkaline throughout profile.

Long-term carrying capacity information (A condition)

Based on fully watered area for 1AE = 450 kg animal consuming 8kg DM/day				
Median annual rainfall 233 – 468 mm				
Pasture type	Median tree cover (TBA m ² /ha) (FPC %)	Median annual pasture growth (DM kg/ha)	Safe annual utilisation pasture growth (%)	LTCC (ha/AE)
Native species	0 TBA/FPC	170 - 1560	20%	9 - 86
	3 TBA 8 FPC	130 - 920	20%	16 – 112

Enterprise

Breeding, fattening and wool production.

Land use and management recommendations

- Suitable for grazing of native pastures.
- Potential for goat and/or meat sheep production.
- Good shade with top-feed usually present.
- Rotational wet season spelling to maintain perennial pasture composition.
- Maintain adequate ground cover to minimise soil erosion.

Land use limitations

- Shallow soils may limit productivity.
- Thickening of woody species, especially false sandalwood.
- Minor erosion and seasonal scalding.
- Seasonal impact from poisonous plants, such as pimelea and turkey bush.
- Moderate clay soils that require 50–75 mm of rain for Mitchell grasses to grow.

Conservation and related management

- Shrubland or woodland with grassy ground layer is habitat for seed and insect eating birds. Invasion by buffel grass reduces habitat quality.

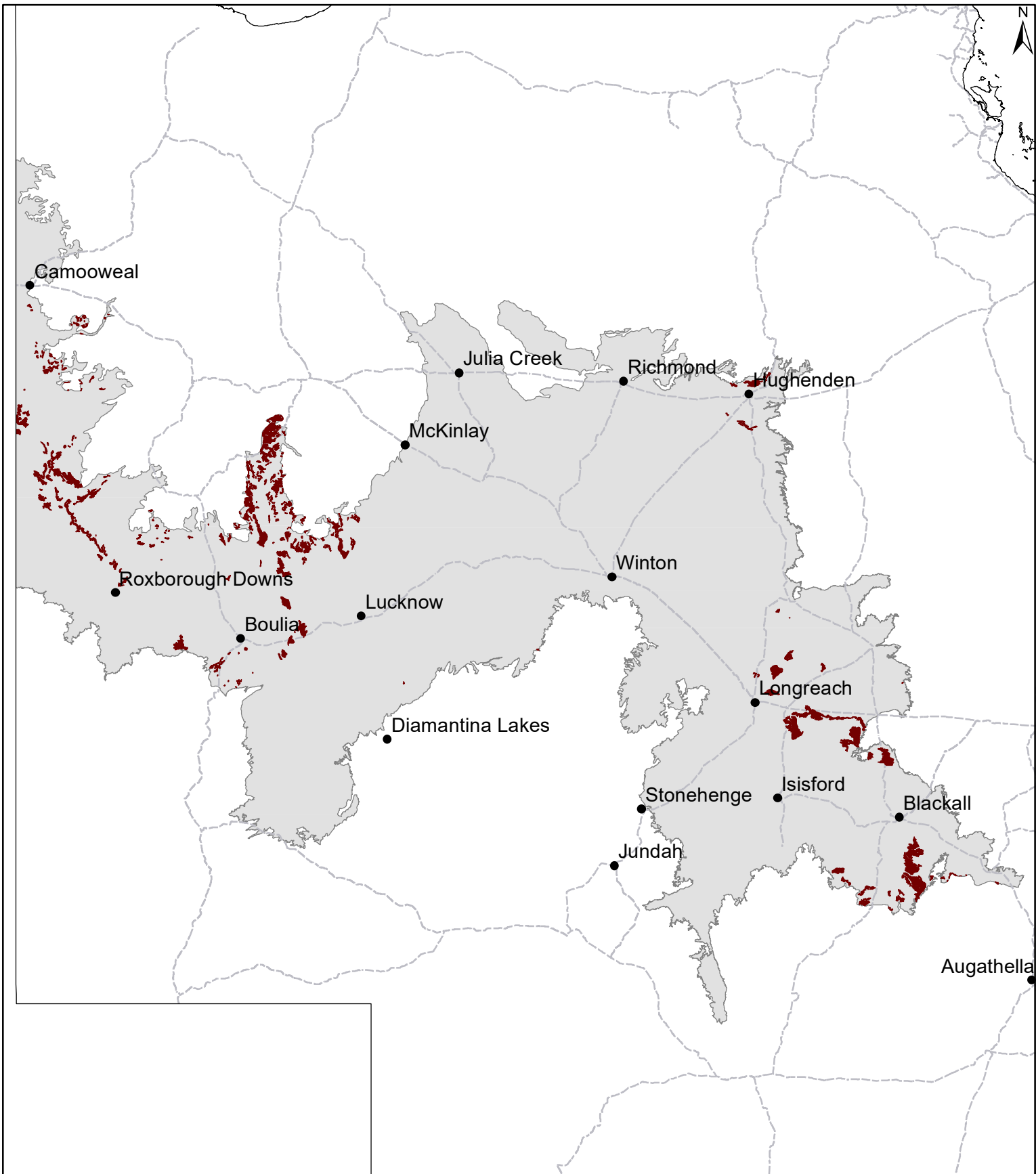
Regional Ecosystems

4.3.21x50, 4.3.23, 4.5.5x1, 4.5.6x1, 4.5.8x1, 4.9.12x2, 4.9.12x4a-b, 4.9.12x5, 4.9.12x6, 4.9.12x7a-d, 4.9.18, 4.9.6, 4.9.8b.

WARLUS land systems

I	II	III	IV	V	VI
	T3, T4, F5		T1, S1	T3	

MGD06 Wooded downs



Area of land type in region: 2%
Median rainfall (region): 233 – 494 mm
Average rainfall (region): 253 – 533 mm
Area of land type with FPC: 25%
Median FPC: 8%
Median TBA: 3 m²/ha



**Queensland
Government**