

Soft gidgee



Photo: T1 (Accord) Land System

General description

Flat to gently undulating closed to open gidgee wooded plains on clay soils often with patchy Mitchell grass and minor stone cover. Generally drain into open or wooded alluvial plains and adjacent to open downs, hard gidgee, jump-ups and eucalypt woodlands.

Landform

Flat to gently undulating plains.

Woody vegetation

Gidgee, often associated with black gidgee and mimosa, and occasional low shrubs of gundabluie and flowering lignum. Occasionally with boree, whitewood, leopardwood, wilga, vine tree, wild orange, ruby saltbush, broom bush, turkey bush and Queensland bluebush in depressions. Often with a dense false sandalwood layer.

Expected pasture composition

** Denotes non-native "Expected Pasture Composition" species.*

Preferred

Mitchell grasses, buffel grass*.

Intermediate

Star grass/native millet, katoora, lovegrasses, bottlewasher grasses, fairy grass.

Non-preferred

Feathertop, wiregrasses.

Annual grasses

Flinders grass, button grass, downs couch.

Common forbs

Red spinach, soda bush, potato bush, flannel weed, pigweed. Non-preferred species include black roly poly, goathead burr, gidgee burr, copperburrs, roly poly.

Suitable sown pasture

Buffel grass, Mitchell grass, Queensland bluegrass.

Introduced weeds

Parthenium, parkinsonia, rubbervine, bellyache bush, Noogoora burr, Bathurst burr, mother-of-millions, cactus (snake, devil's rope, harrisia and coral), mesquite, prickly acacia, Mexican poppy, florestina, African box thorn, Chineese apple.

Soil

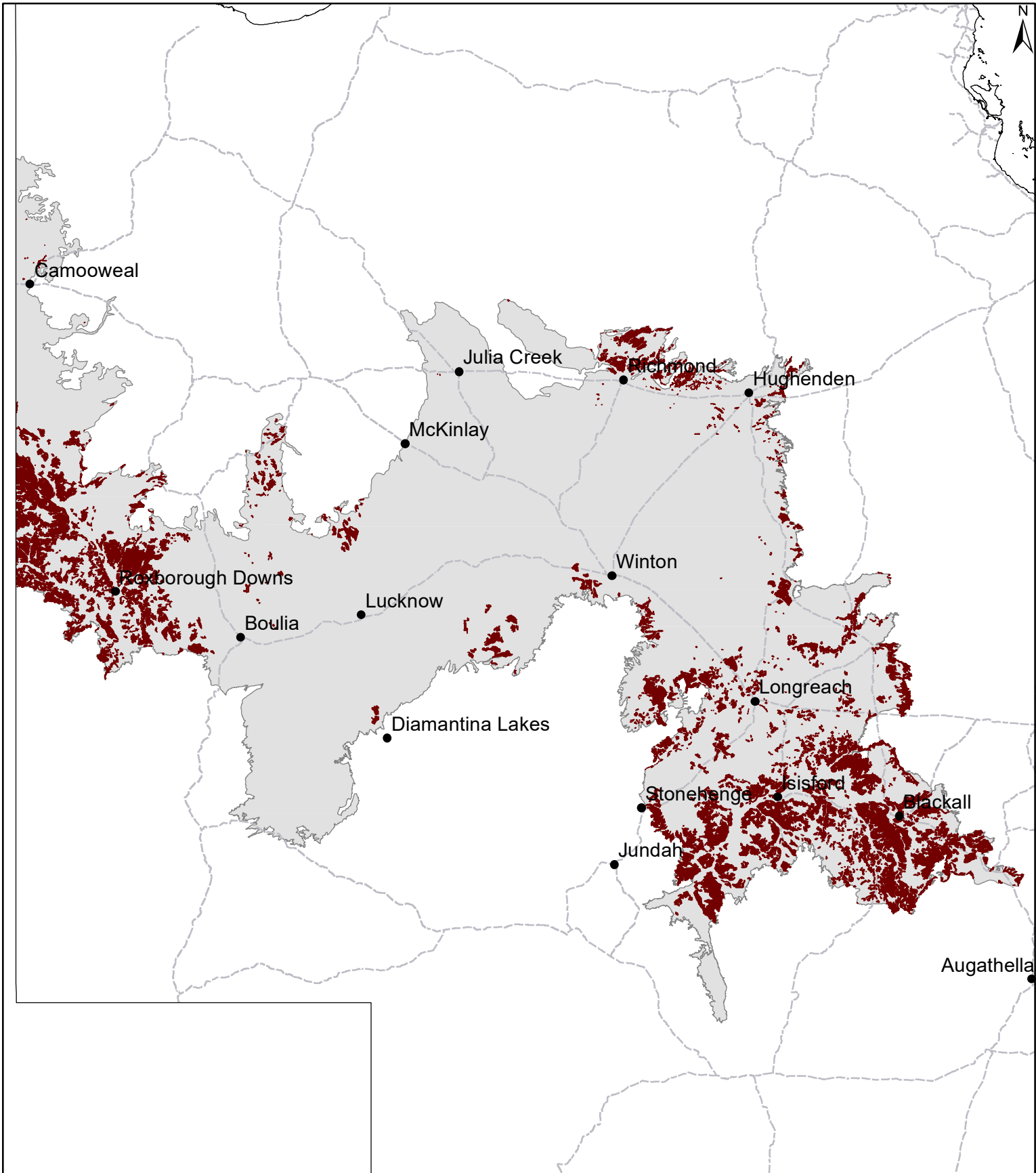
Moderately deep to deep brown and grey clays with soft self-mulching surfaces. Surface gravel is common in timbered areas. Clay soils moderately cracking to depth.

Description

Surface: Soft self-mulching; **Surface texture:** medium to heavy clay; **Subsoil texture:** medium to heavy clay.

Features	Light gravel and stone cover is common. Gypsum occurs at depth. Ironstone and quartz inclusions. Weak to moderate gilgais.				
Water availability	Moderate to high.				
Rooting depth	Deep				
Infiltration	High initially on a dry soil profile, slowing to moderate levels after 50 mm of rain as cracks close and to low levels after 100 mm of rain. Increasing runoff following 100 mm of rain. Estimates based on low to moderate intensity storm rain.				
Fertility	Moderate to high.				
Salinity	Non-saline at surface, increasing with depth.				
Sodicity	Non-sodic				
pH	Generally alkaline throughout profile.				
Long-term carrying capacity information (A condition)	Based on fully watered area for 1AE = 450 kg animal consuming 8kg DM/day				
	Median annual rainfall 233 – 473 mm				
	Pasture type	Median tree cover (TBA m ² /ha) (FPC %)	Median annual pasture growth (DM kg/ha)	Safe annual utilisation pasture growth (%)	LTCC (ha/AE)
	Native species	0 TBA/FPC	620 - 2660	18%	6.1 - 26
		3 TBA 8 FPC	400 - 2020	18%	9.0 – 41
Enterprise	Buffel		1290 - 4410	30%	2.2 – 7.6
	Breeding and wool production (unimproved); breeding, fattening and wool production (improved).				
	<ul style="list-style-type: none"> Suitable for grazing of native pastures and sown pastures. Rotational wet season spelling to maintain perennial pastures. Maintain adequate ground cover to minimise soil erosion. Strategic burning to manage gidgee thickening with late dry season hot fires. 				
Land use and management recommendations					
Land use limitations	<ul style="list-style-type: none"> Dense gidgee or false sandalwood thickening limits productivity. Rundown of buffel pastures in the long term (>20 years). Moderate clay soils that require 50–75 mm of rain for Mitchell grasses to grow. 				
Conservation features and related management	<ul style="list-style-type: none"> Very diverse woodland / shrubland which has been extensively cleared. Biodiversity value is related to size and connectivity of remnant patches. 				
Regional Ecosystems	2.3.7a, 2.4.3a, 4.5.6, 4.5.6x2a-c, 4.5.6x4, 4.5.7a-b, 4.5.9, 4.9.10a-d, 4.9.11, 4.9.11x1, 4.9.14x1, 4.9.14x40a-c, 4.9.14x41, 4.9.14x42, 4.9.16, 4.9.7x1.				
WARLUS land systems	I G4, G5	II T5, G1, G4	III G1, G2, G3	IV G1, G3, areas of W4	V T1, G1, G2 VI

MGD07 Soft gidgee



Area of land type in region: 9%
Median rainfall (region): 233 – 494 mm
Average rainfall (region): 253 – 533 mm
Area of land type with FPC: 44%
Median FPC: 8%
Median TBA: 3 m²/ha



Queensland
Government