

Floodplains



Photo: C1 (Kendall) land system

General description	Flat, generally treeless, alluvial plains supporting annual pastures with one or more main channels, smaller secondary channels and numerous shallow channels (gutters) on deep cracking clays with sand and silt intermixed. Lignum and Queensland bluebush swamps can be found adjacent to main channels.
Landform	Flat alluvial plains with channels.
Woody vegetation	Coolibah and river red gum lining the channels; belalie, gooramurra, lignum.
Expected pasture composition	<p>* Denotes non-native "Expected Pasture Composition" species.</p> <p># Denotes non-grass species that are important to grazing and land condition values in annually dominated land types.</p>
Preferred	Bull Mitchell grass, Queensland bluebush#.
Intermediate	Rat's tail couch, fairy grass.
Non-preferred	Difficult to determine.
Annual grasses	Flinders grass, channel millet (preferred), pepper grass, button grass, Australian dropseed.
Common forbs	Annual verbine, soda bush, Cooper clover#, cow vine#, tarvine, daisies, downs nut grass#, channel nut grass#. Non-preferred species include roly poly, copperburrs, black roly poly.
Suitable sown pastures	Not suitable for sown pastures.
Introduced weeds	Mesquite (hybrid), prickly acacia, parthenium, Bathurst burr.
Soil	Very deep cracking clays with sand and silt intermixed.
Description	Surface: Self-mulching crusting may occur; Surface texture: silty clay to heavy clay; Subsoil texture: heavy clay.
Features	Sand and silt bands common in the profile. Flooding provides greater benefit than rain as >100 mm generally required for a response.

Water availability

Moderate to high.

Rooting depth

Deep

Infiltration

High initially on a dry soil profile, slowing to low levels after 30–60 mm of rain as the surface seals. Good soaking rain or flooding required to wet the soil profile.

Fertility

Moderate to high.

Salinity

Non-saline at the surface increasing to very high at depth.

Sodicity

Non-sodic at the surface increasing to strongly sodic at depth.

pH

Alkaline throughout.

Long-term carrying capacity information (A condition)

Based on fully watered area for 1AE = 450 kg animal consuming 8kg DM/day				
Median annual rainfall 233 – 406 mm				
Pasture type	Median tree cover (TBA m ² /ha) (FPC %)	Median annual pasture growth (DM kg/ha)	Safe annual utilisation pasture growth (%)	LTCC (ha/AE)
Native species	0 TBA/FPC	340 - 1680	15%	12 - 57
	3 TBA 8 FPC	180 - 990	15%	20 – 108

Estimated at 15%, but difficult to determine due to high variability of pasture growth following flooding.

Enterprise

Breeding, wool production and opportunistic fattening after seasonal flooding.

Land use and management recommendations

- Suitable for grazing of native pastures.
- Intermittent flooding provides the greatest pasture production.

Land use limitations

- Thickening of lignum may limit productivity.
- Heavier clay soils generally require >100 mm of rain, with localised flooding or ponding of water, to respond.

Conservation features and related management

- Coolibah and river red gum have hollows which are essential breeding sites for parrots, owls, waterbirds and bats.
- Timbered drainage lines provide refuge areas and connectivity across grassy landscapes.
- Maintaining diversity of ages and species of trees is important.
- Associated wetland areas provide critical breeding habitat and food chains for fish and wetland birds.
- Managing grazing pressure, feral animals and weed invasions are priority issues.
- Mound springs are an endangered regional ecosystem occurring in this land type and contain rare plants and aquatic animals.
- Stock trampling, introduced weeds and feral pigs are important management issues.

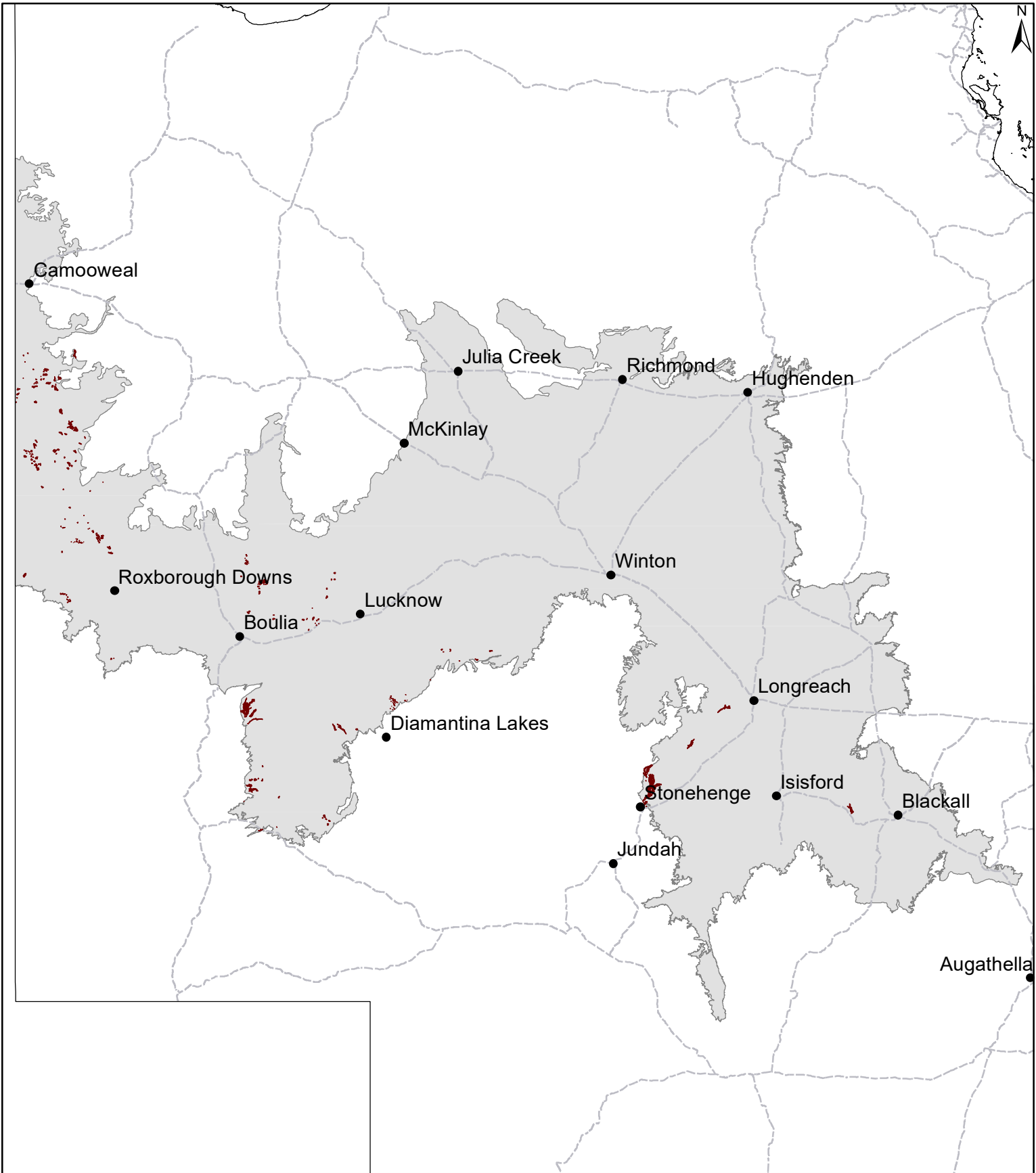
Regional Ecosystems

4.3.12a-b, 4.3.12d, 4.3.13, 4.3.24, 4.3.24a-b

WARLUS land systems

I	II	III	IV	V	VI
C1, C2, C3	L1			C1, (L1)	C1,C2, C3

MGD16 Floodplains



Area of land type in region: 0.2%
Median rainfall (region): 233 – 494 mm
Average rainfall (region): 253 – 533 mm
Area of land type with FPC: 11%
Median FPC: 8%
Median TBA: 3 m²/ha



**Queensland
Government**