

# Old alluvials



## Landform

Level plains including abandoned stream channels, backslopes and adjacent floodplains.

## Woody vegetation

Ghost gum, bloodwood, grey box, terminalia open woodlands with breadfruit or guttapercha understorey.

## Expected pasture composition

\* Denotes non-native "Expected Pasture Composition" species.

### Preferred

Black speargrass, forest bluegrass, golden beard grass, silky browntop, giant speargrass.

### Intermediate

Pitted bluegrass.

### Non-preferred

Wiregrass.

### Annual grasses

Comet grass.

## Suitable sown pastures

Buffel grass, urochloa, Shrubby and Caribbean stylos.

## Introduced weeds

Rubbervine, parkinsonia, hyptis, chinee apple.

## Soil

Alluvial loams and yellow duplex soils.

## Description

**Surface:** Non-cracking; **Surface texture:** loamy clay; **Subsoil texture:** light to medium clay.

## Features

Water availability	Moderate
Fertility	Moderate
Salinity	Non-saline
Sodicity	Non-sodic
pH	Slightly acidic (6.0) throughout the profile.

### Long-term carrying capacity information (A condition)

Based on fully watered area for 1AE = 450 kg animal consuming 8kg DM/day				
Median annual rainfall 778 – 1297 mm				
Pasture type	Median tree cover (TBA m <sup>2</sup> /ha) (FPC %)	Median annual pasture growth (DM kg/ha)	Safe annual utilisation pasture growth (%)	LTCC (ha/AE)
Native species	0 TBA/FPC	980 - 2040	25%	6 - 12
	7 TBA 18 FPC	460 - 890	25%	13 – 25

### Enterprise

Breeding and growing.

### Land use and management recommendations

- Suitable for grazing of native pastures.
- Rotational wet seasons spelling to maintain perennial pasture composition.
- Manage grazing pressure to ensure at least 50% ground cover at break of season.
- Strategic burning (late dry hot burn) to manage woody weeds (e.g. rubbervine).

### Land use limitations

- Moderate erodibility on duplex soils on steeper slopes.

### Conservation features and related management

- Subject to high total grazing pressure leading to wind erosion, scalding and weed invasion (e.g. rubbervine, hyptis).
- Significant habitat particularly for herbivores such as macropods and arboreal mammals.
- Significant habitat as drought refuge, wildlife corridors and for arboreal animals.

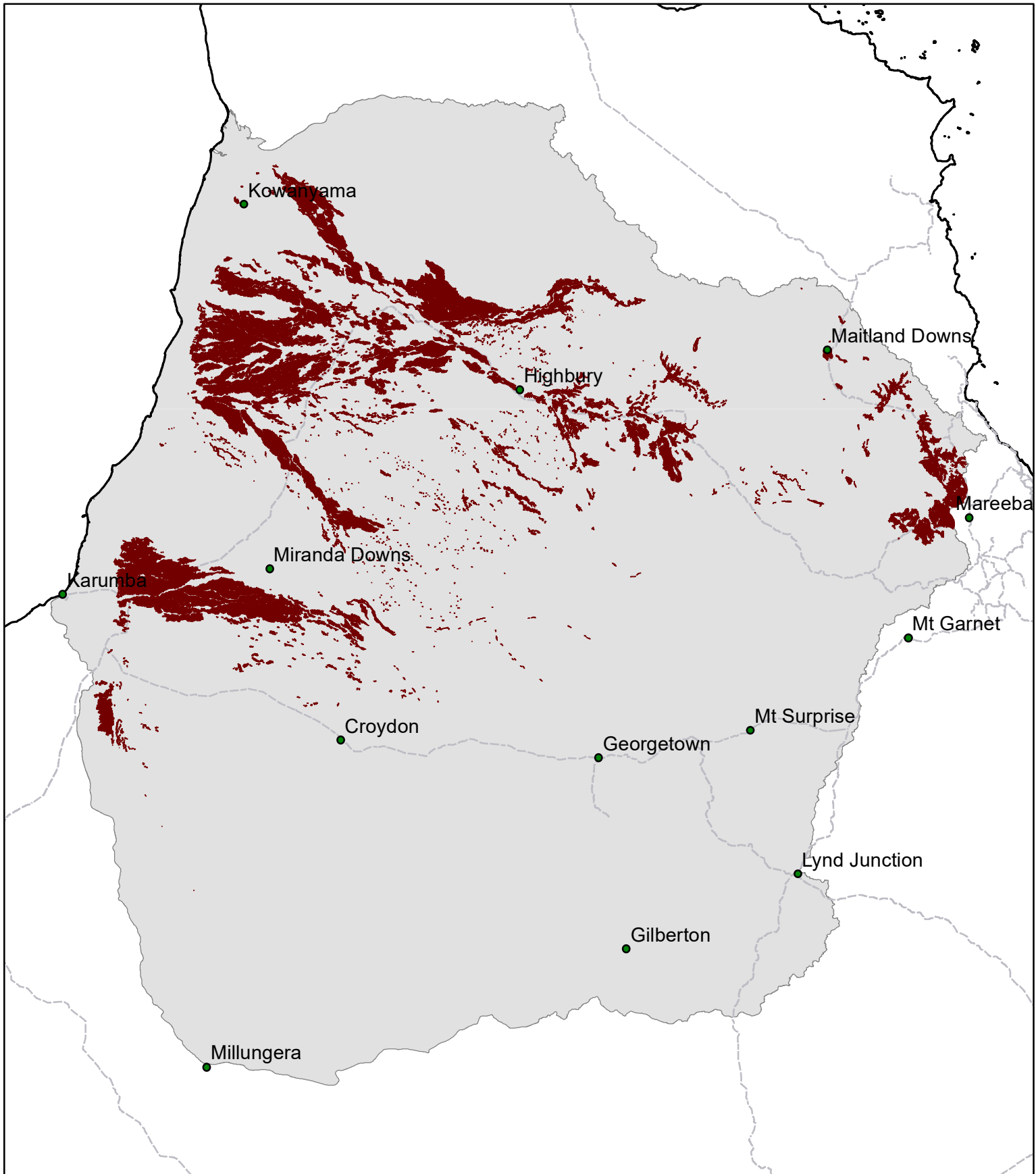
### Regional Ecosystems

2.3.10a-c, 2.3.10e-f, 2.3.18, 2.3.21b, 2.3.21e, 2.3.40, 2.3.42e, 2.3.45, 2.3.46, 2.3.49, 2.3.55a, 2.3.56, 2.3.57, 2.3.58, 2.3.59a, 2.3.60, 2.3.66, 2.3.69b, 9.3.70, 2.4.4b, 2.5.22a-b, 2.5.23c, 9.5.9a-c.

### Land system, Local Pasture Unit

Gilbert (54), Miranda (51) (Perry *et al* 1964).

# NG07 Old alluvials



Area of land type in region: 5%  
Median rainfall (region): 544 – 1297 mm  
Average rainfall (region): 580 – 1370 mm  
Area of land type with FPC: 90%  
Median FPC: 18%  
Median TBA: 7 m<sup>2</sup>/ha



**Queensland**  
Government