

# Sand ridge



## Landform

Subtle ridges on the outwash plains.

## Woody vegetation

Messmate, Darwin woollybutt, Cooktown ironwood, bloodwood, narrow-leaved ironbark woodland with understorey dominated by wattles.

## Expected pasture composition

*\* Denotes non-native "Expected Pasture Composition" species.*

*Preferred species rarely dominate this land type. Pasture may be dominated by fire grass.*

### Preferred

Golden beard grass, forest bluegrass, plume sorghum, black speargrass, giant speargrass.

### Intermediate

Northern wanderrie grass, cotton panic, wiregrasses.

### Non-preferred

### Annuals

Fire grass, silkytop grass, lovegrasses, long-awn wanderrie grass, rare panic, comb finger grass, pigeon grass.

## Suitable sown pastures

Shrubby and Caribbean stylos with fertiliser.

## Introduced weeds

## Soil

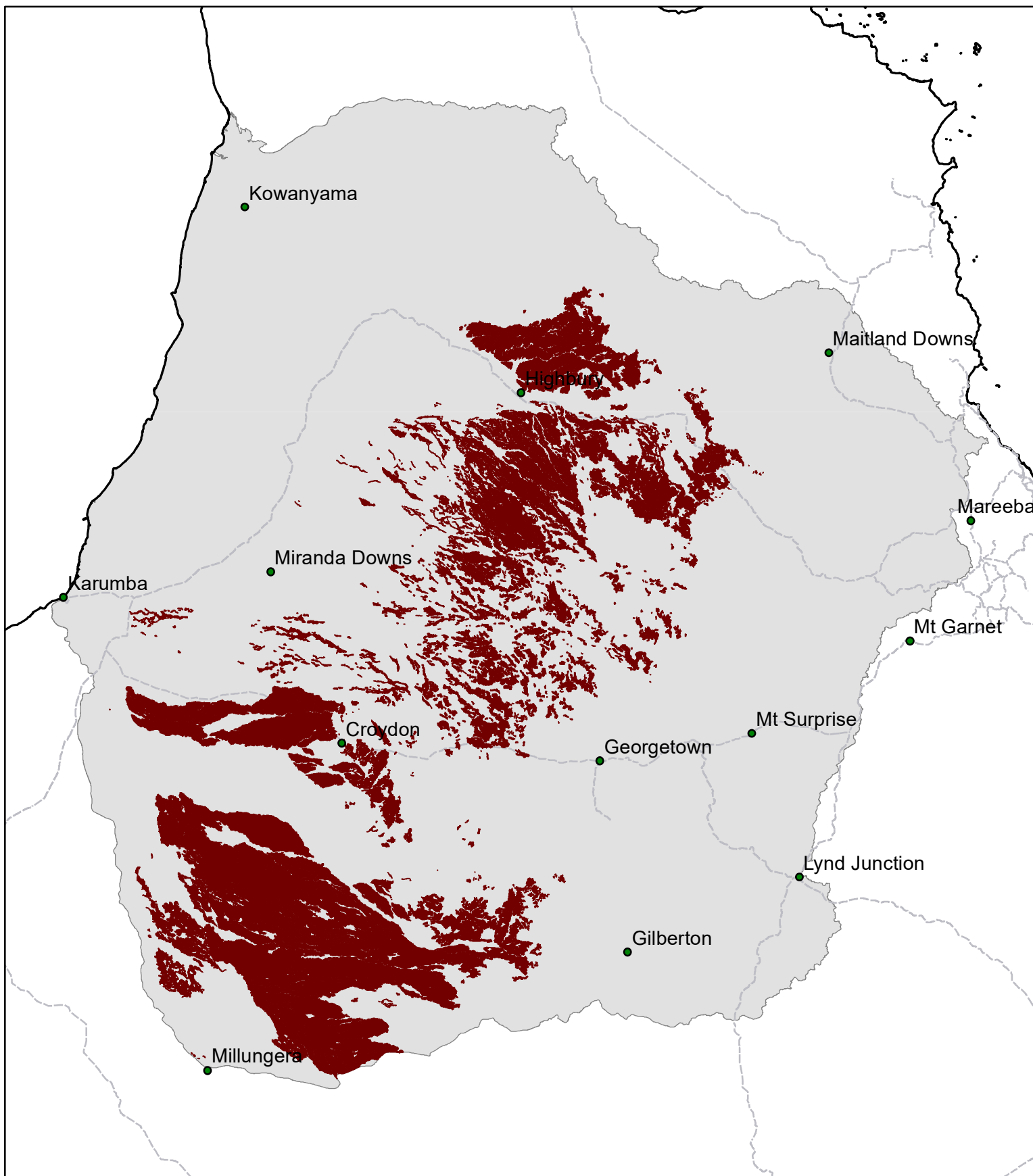
Sandy red earths.

## Description

**Surface:** Loose; **Surface texture:** sandy; **Subsoil texture:** light red clay.

Features	Dry refuge for stock during wet season.																									
Water availability	Low																									
Fertility	Low; low nitrogen (0.022%); low phosphorus (2 mg/kg); low potassium (0.1 cmol /kg).																									
Salinity	Non-saline																									
Sodicity	Non-sodic																									
pH	Slightly acidic (6.0).																									
Utilisation	<table><tr><td colspan="5">Based on fully watered area for 1AE = 450 kg animal consuming 8kg DM/day</td></tr><tr><td colspan="5">Median annual rainfall 544 – 961 mm</td></tr><tr><td>Pasture type</td><td>Median tree cover  (TBA m²/ha) (FPC %)</td><td>Median annual pasture growth  (DM kg/ha)</td><td>Safe annual utilisation pasture growth  (%)</td><td>LTCC  (ha/AE)</td></tr><tr><td>Native species</td><td>0 TBA/FPC</td><td>520 - 1530</td><td>15%</td><td>13 - 37</td></tr><tr><td></td><td>7 TBA 18 FPC</td><td>140 - 480</td><td>15%</td><td>41 – 136</td></tr></table>	Based on fully watered area for 1AE = 450 kg animal consuming 8kg DM/day					Median annual rainfall 544 – 961 mm					Pasture type	Median tree cover  (TBA m²/ha) (FPC %)	Median annual pasture growth  (DM kg/ha)	Safe annual utilisation pasture growth  (%)	LTCC  (ha/AE)	Native species	0 TBA/FPC	520 - 1530	15%	13 - 37		7 TBA 18 FPC	140 - 480	15%	41 – 136
Based on fully watered area for 1AE = 450 kg animal consuming 8kg DM/day																										
Median annual rainfall 544 – 961 mm																										
Pasture type	Median tree cover  (TBA m²/ha) (FPC %)	Median annual pasture growth  (DM kg/ha)	Safe annual utilisation pasture growth  (%)	LTCC  (ha/AE)																						
Native species	0 TBA/FPC	520 - 1530	15%	13 - 37																						
	7 TBA 18 FPC	140 - 480	15%	41 – 136																						
Enterprise	Breeding																									
Land use and management recommendations	<ul style="list-style-type: none"><li>Suitable for grazing of native pastures, but only at low carrying capacities.</li><li>Spelling to achieve fuel loads and strategic burning (late dry hot burn) to manage woody thickening (e.g. wattles).</li></ul>																									
Land use limitations	<ul style="list-style-type: none"><li>Very low fertility limits potential carrying capacities.</li><li>Phosphorus supplements are essential in wet season.</li></ul>																									
Conservation features and related management	<ul style="list-style-type: none"><li>Seasonal refuge for fauna.</li><li>Subject to heavy total grazing pressure. In some areas prone to scalding and wind erosion.</li><li>The vulnerable plant species <i>Acacia crombiei</i> and the rare species Howitt's box <i>Eucalyptus howittiana</i>, <i>Labichea brassii</i> can occur in this land type.</li></ul>																									
Regional Ecosystems	2.5.14a, 2.5.19a-d, 2.5.27, 2.5.3, 2.5.5a-b, 2.5.6a-c, 3.5.32, 9.11.32, 9.12.33c.																									
Land system, Local Pasture Unit	Strathpark (19), Dandry (21), Esmeralda (22), Strathmore (23), Stanhill (36), Mayvale (42), Claraville (43), Abingdon (45), Prospect (57) (Perry <i>et al</i> 1964); LPU 41 (Tothill and Gillies 1992).																									

# NG12 Sand ridge



Area of land type in region: 13%  
Median rainfall (region): 544 – 1297 mm  
Average rainfall (region): 580 – 1370 mm  
Area of land type with FPC: 99%  
Median FPC: 18%  
Median TBA: 7 m2/ha



**Queensland**  
Government