

Silver-leaved box



Landform	Timbered to lightly timbered inland plains.
Woody vegetation	Silver-leaved box low woodlands with occasional whitewood, beefwood, and western bloodwood. Paperbark, winged nut tree and gutta-percha occur in higher rainfall areas. Sparse shrub cover may include currant bush, wait-a- while and wattles.
Expected pasture composition	<i>* Denotes non-native "Expected Pasture Composition" species.</i>
Preferred	Black speargrass, kangaroo grass, forest bluegrass, desert bluegrass, Gulf bluegrass (on heavier soils).
Intermediate	Bottlewashers, cotton panic, five-minute grass, silky browntop, golden beard grass, silky oil grass, soft spinifex.
Non-preferred	Wiregrasses.
Annual grasses	Button grass, slender wanderrie grass, long-awn wanderrie grass, native couch, Australian dropseed, small burr grass, comb chloris, fire grass.
Common forbs	Tickweed, sidas, flannel weed, common bonamia, tropical speddwell, soft roly poly.
Suitable sown pastures	Buffel grass, shrubby stylo (e.g. Seca), Caribbean stylo (e.g. Verano)
Introduced weeds	Calotrope.
Soil	Red and yellow earths.
Description	Surface: massive. (Generally hard settling with some areas of softer). Areas of surface ironstone occur. Surface texture: sand, sandy loam or sandy clay loam; Subsoil texture: ranges from sandy clay to a medium clay.
Features	Subsoil structure is hard to very hard. Variable amounts of ironstone nodules in profile of some soils and decreasing with depth.

Water availability

Moderate.

Rooting depth

Moderate, limited by hard subsoils.

Infiltration

Ranges dramatically depending on soil surface characteristics. Generally moderately drained, some soils poorly drained and prone to periodic waterlogging. The sandier the soil the higher the infiltration rates. Areas of ironstone are generally less permeable.

Fertility

Very low to low.

Salinity

Very low.

Sodicity

Non-sodic.

pH

Neutral to medium acid at the surface. Some sub-soils are alkaline.

Long-term carrying capacity information (A condition)

Based on fully watered area for 1AE = 450 kg animal consuming 8kg DM/day				
Median annual rainfall 432 – 831 mm				
Pasture type	Median tree cover (TBA m ² /ha) (FPC %)	Median annual pasture growth (DM kg/ha)	Safe annual utilisation pasture growth (%)	LTCC (ha/AE)
Native species	0 TBA/FPC	1200 - 3470	18%	4.7 - 14
	5 TBA 13 FPC	720 - 2770	18%	5.9 – 23

Enterprise

Breeding.

Land use and management recommendations

- Use fire judiciously as management tool to control wattle and timber thickening.
- Maintenance of ground cover to minimise shrub invasion and erosion.

Land use limitations

- Areas of scalding due to overuse.
- Hard to very hard subsoils.
- Regrowth and high shrub densities can limit productivity

Conservation features and related management

- Periodic wildfires can lead to changes in woody vegetation and pasture composition.

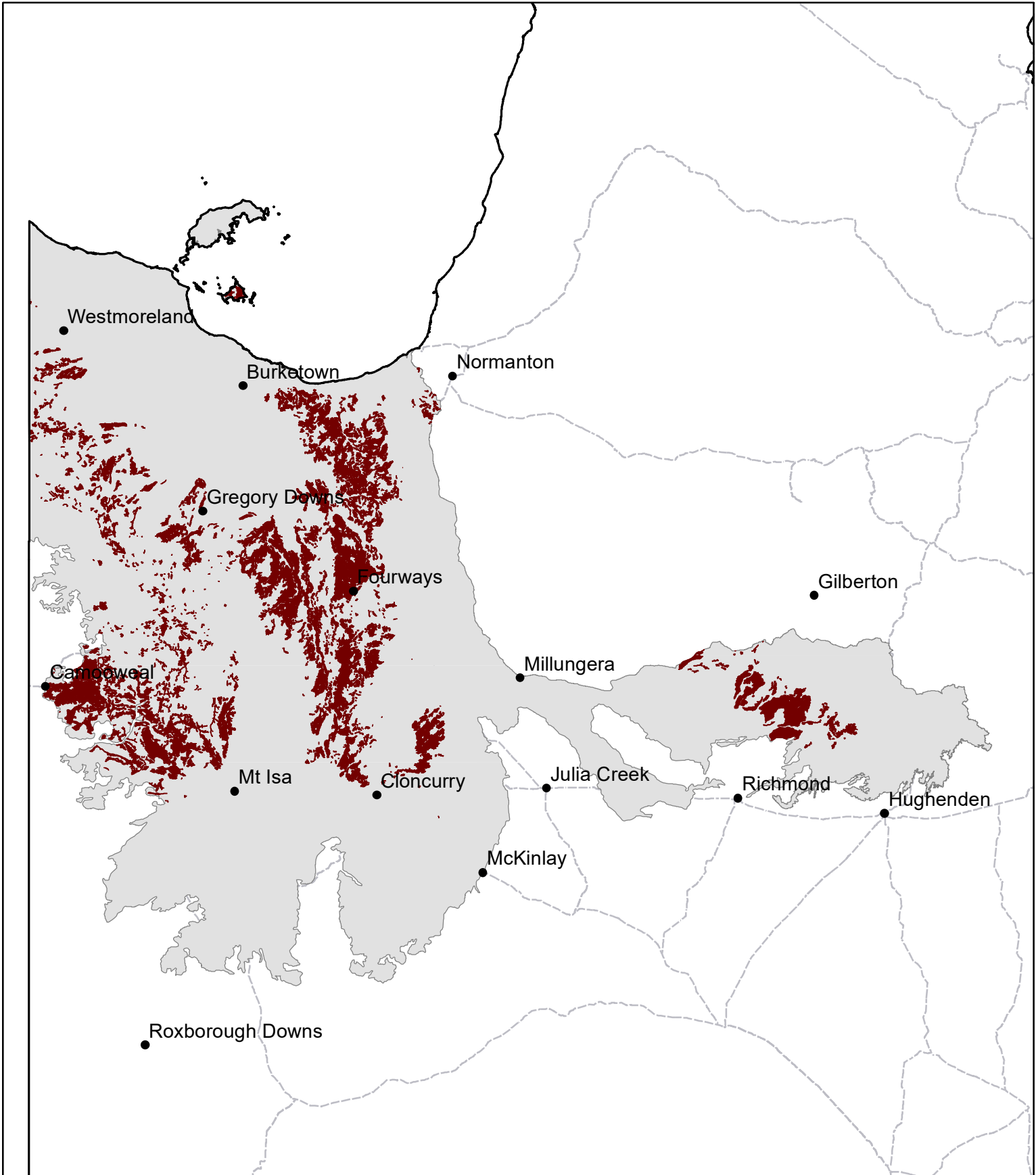
Regional Ecosystems

1.3.15, 1.5.10a-b, 1.5.11, 1.5.13, 1.5.14a-b, 2.3.32, 2.5.31, 2.5.33a-d, 2.7.5a-b, 2.7.5x1, 2.7.5x50b.

Land Systems

Korong (46), Manrika (20) (Perry 1964).

SG13 Silver-leaved box



Area of land type in region: 7%
Median rainfall (region): 233 – 831 mm
Average rainfall (region): 271 – 952 mm
Area of land type with FPC: 79%
Median FPC: 13%
Median TBA: 5 m²/ha



Queensland
Government