

Range soils



Landform	Dissected hilly country.
Woody vegetation	Blue gum, grey box, narrow-leaved ironbark woodland with understorey of cypress pine, wattles and quinine.
Expected pasture composition	<i>* Denotes non-native "Expected Pasture Composition" species.</i>
Preferred	Black speargrass, kangaroo grass, giant speargrass, golden beard grass.
Intermediate	
Non-preferred	Wiregrasses.
Annual grasses	
Suitable sown pastures	Shrubby and Caribbean stylos.
Introduced weeds	
Soil	Shallow soils.
Description	Surface: Variable gravel cover; sometimes hard-setting; Surface texture: variable; Subsoil texture: limited by underlying bedrock.
Features	Shallow, generally stony and rocky soils.

Water availability	Low
Fertility	Low
Salinity	Non-saline
Sodicity	Non-sodic
pH	Variable, slightly acid soils.

Long-term carrying capacity information (A condition)

Based on fully watered area for 1AE = 450 kg animal consuming 8kg DM/day				
Median annual rainfall 833 – 1491 mm				
Pasture type	Median tree cover (TBA m ² /ha) (FPC %)	Median annual pasture growth (DM kg/ha)	Safe annual utilisation pasture growth (%)	LTCC (ha/AE)
Native species	0 TBA/FPC	3650 - 4660	15%	4.2 – 5.3
	18 TBA 43 FPC	1080 - 1820	15%	11 – 18

Enterprise

Land use and management recommendations

- Breeding
- Suitable for grazing of native pastures.
 - Rotational wet seasons spelling to maintain perennial pasture composition.
 - Manage grazing pressure to ensure at least 50% ground cover at break of season.
 - Strategic burning (late dry hot burn) to manage woody thickening (e.g. wattles).
- Skeletal, shallow and rocky soils limit productivity.

Land use limitations

Conservation features and related management

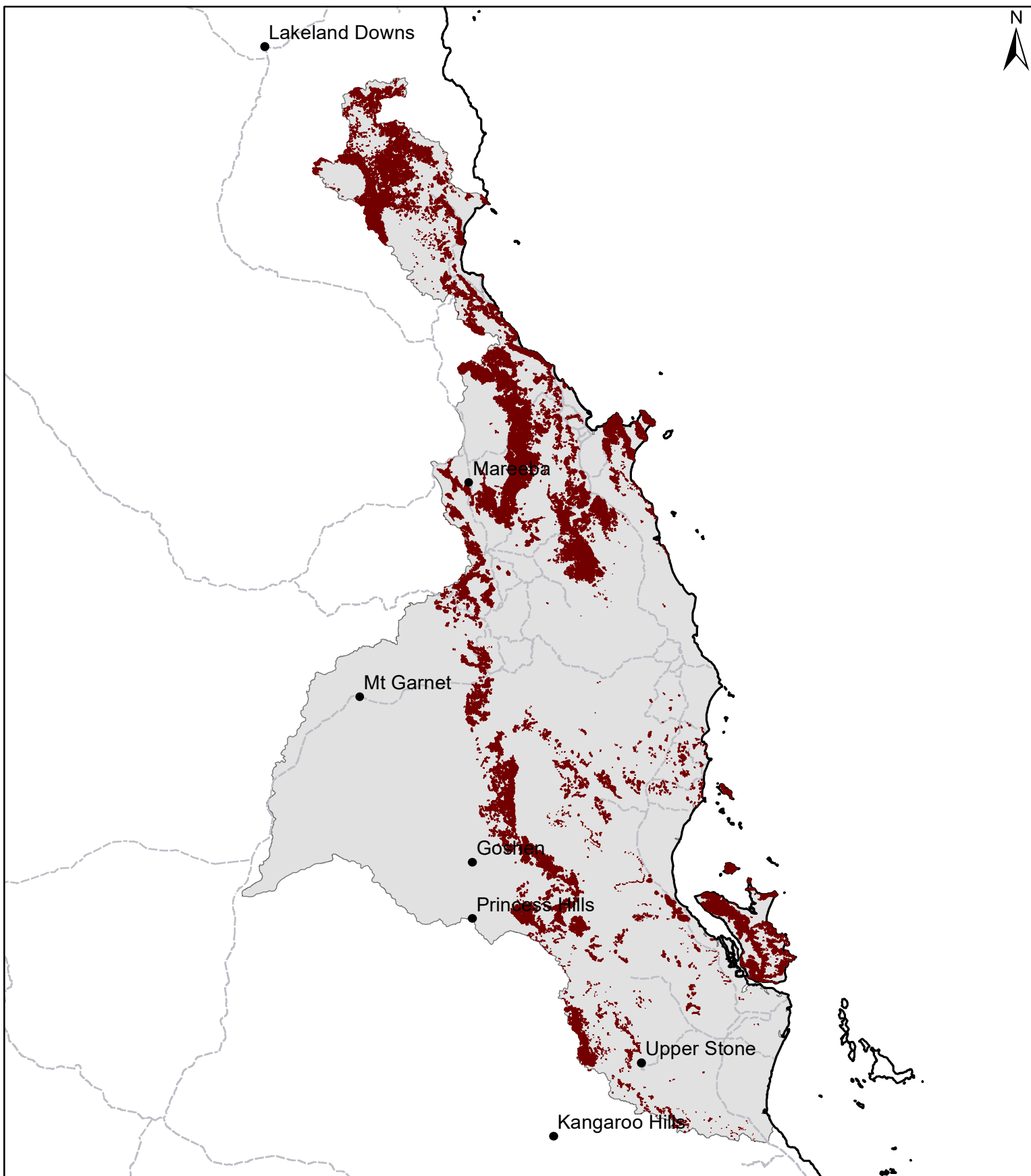
Regional Ecosystems

7.11.13, 7.11.14a-b, 7.11.14d, 7.11.19a, 7.11.21, 7.11.21a-b, 7.11.26a-f, 7.11.31a-d, 7.11.32a-i, 7.11.33a, 7.11.33c, 7.11.35a, 7.11.35c, 7.11.38a-c, 7.11.39a-c, 7.11.40a-i, 7.11.42a-b, 7.11.44, 7.11.45, 7.11.47, 7.11.49, 7.11.50b, 7.11.51, 7.11.51a-c, 7.11.5a-g, 7.11.6, 7.12.12a-c, 7.12.21a-b, 7.12.21d, 7.12.22a-b, 7.12.22d-e, 7.12.23a-f, 7.12.24a-c, 7.12.25a-b, 7.12.25d, 7.12.26a-e, 7.12.27a-b, 7.12.28a-b, 7.12.29a, 7.12.29c-d, 7.12.30a-b, 7.12.30d, 7.12.33a-b, 7.12.34, 7.12.37a-b, 7.12.37d-f, 7.12.37g-i, 7.12.4, 7.12.51a-b, 7.12.52, 7.12.54a-d, 7.12.54f-g, 7.12.56c, 7.12.57, 7.12.57a, 7.12.57c, 7.12.58, 7.12.58, 7.12.59, 7.12.5a-d, 7.12.5f-i, 7.12.60a-c, 7.12.61a-c, 7.12.62a-c, 7.12.65c, 7.12.65e-h, 7.12.65j-k, 7.12.66a-c, 7.12.66e, 9.11.4a, 9.12.20, 9.12.30a, 9.12.31b, 9.8.13.

Soil associations

PLMV, PLHV, SRHV, PLHG, PLHM, PLHS, PLDR, PMG, PHG, PHM, PHS, PSHB, REHG, RHG, SCHG, RHM, YEHM, NCHM, RHS, REHS, SCHS, BGHS (Grundy and Bryde 1989).

WT03 Range soils



Area of land type in region: 10%
Median rainfall (region): 629 – 1491 mm
Average rainfall (region): 664 – 1647 mm
Area of land type with FPC: 90%
Median FPC: 43%
Median TBA: 18 m²/ha



Queensland
Government