



Update

Your latest news from the FutureBeef program

Hi <<First name>>

Do you know a woman on a mission who deserves recognition and opportunity? Applications for the 2024 AgriFutures Rural Women's Award are open now until 25 October 2023.

The AgriFutures Rural Women's Award is Australia's leading award empowering and celebrating the inclusive and courageous leadership of women involved in Australia's rural and emerging industries, businesses, and communities. The award opens doors to professional development and alumni networks, as well as providing a \$15,000 grant from Westpac for the state winner to support their project. Time's running out! [Click here to find out more.](#)

We welcome feedback on the FutureBeef eBulletin via [email](#), call us on 13 25 23 (for the cost of a local call in Queensland), connect with us on [Facebook](#), [X \(formerly known as Twitter\)](#) and [LinkedIn](#), or check us out on [YouTube](#). We'd love to hear from you...

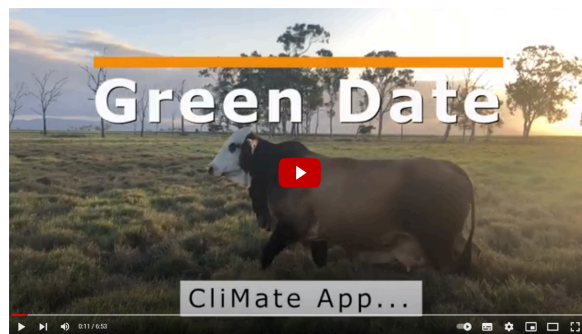
Kind regards,

Jodie

on behalf of the FutureBeef team

Calculating your Green Date

All climate forecasts to-date indicate that the chances of exceeding median rainfall this wet season are low. As such, graziers may be wondering when they can reasonably expect to have had a decent fall of rain that would be enough to stimulate pasture growth. One way to do this is to analyse historical rainfall records, using Australian CliMate to estimate your region's Green Date. If you haven't received the target rainfall amount by this date, it is likely that the pasture growth in the year ahead will be reduced.



[Find out more with Chelsea Jarvis, Northern Australia Climate Program](#) →

Managing grass from space — are you getting the most from free data?



Satellite imagery has emerged as a powerful tool to monitor and manage extensive rangelands by providing objective data. These days, we can estimate ground cover and soil phosphorus content, monitor total standing dry matter, and create digital maps all from our desktop, but the question is, are you getting the most out of what's available online for free?

Keeping sight of profit drivers — bull selection workshops recap



With spring bull sales in full swing, producers in the Mt Coolon and Dotswood districts took advantage of two bull selection workshops held on local properties. The events, run by the DAF beef extension team, featured keynote speaker, author, and renowned breeding and genetics consultant, John Bertram.

[Here's John's key messages →](#)

Have you seen MyFORAGE?



The Long Paddock website has recently had a new tool added to its impressive compendium! MyFORAGE is an online mapping tool that allows users to customise their FORAGE reports by paddock. As with all of the products available on Long Paddock, MyFORAGE is free and easy to use.

[Find out more about MyFORAGE →](#)

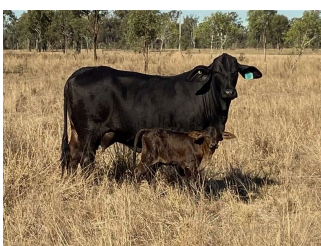
How to lift productivity with leucaena in grass pastures, with Stuart Buck



Leucaena is well known for its ability to significantly increase the weight gain of grazing stock as well as improve long term carrying capacity. However, establishment can be difficult, lengthy and costly if not done correctly. In this article, featured on Growing Country, Department of Agriculture and Fisheries agronomist, Stuart Buck, shares his insights on leucaena, including how to achieve good establishment and the required on-going management needed to boost productivity long-term.

[Find out more →](#)

Carbon project case study: Beef Cattle Herd Methodology with CPC



In the latest Meat & Livestock Australia *Feedback* magazine, Consolidated Pastoral Company (CPC) share how it has used the Beef Cattle Herd Methodology to generate nearly 200,000 Australian Carbon Credit Units over the last five years.

[Read more on page 28 →](#)

WA: Fodder research yields big opportunity for small-scale irrigation



Localised, small-scale developments of groundwater assets across the Kimberley and Pilbara regions are creating opportunities to increase the productivity of the northern beef industry. Here are some results from recent research on irrigated forage production in the northern rangelands of WA completed by Department of Primary Industries and Regional Development.

[Compare the results of Rhodes and panic grass, forage maize, hybrid sorghum, and maize grain →](#)

New weed identification app road testers wanted!



The Centre of Invasive Species Solutions has developed a weed identification, alert, recording and communication system that supports cooperative weeds action Australia-wide. The new app, WeedScan (beta version), can look at an image of a plant and let an artificial intelligence algorithm match it to known weeds to identify it. However, the development team are in need of feedback.

[If you can help, here's more information →](#)

Freight disaster subsidy assistance for producers on the Barkly (NT)



Primary producers within the Barkly NT local government area recently affected by the bushfire can claim freight subsidies if they have needed to move emergency fodder for livestock, remove stock from impacted areas, replace buildings for livestock, repair fencing, machinery and equipment associated with livestock or replace animals lost from the event.

[Find out more →](#)

Upcoming webinar: Outcomes from 7 years of pasture dieback research

Over the last 7 years the Department of Agriculture and Fisheries has conducted research, development and extension activities to support beef producers affected by pasture dieback.

In this webinar being held on 24 October at 12:30 pm (AEST), the pasture dieback team will provide an update on the current dieback situation in Queensland and the outcomes of research into the management options available to successfully restore pasture productivity.

[Register today →](#)

Get your entries in! Applications close 31 October

The acclaimed Zanda McDonald Award is now entering its tenth year and is accepting applications for the 2024 program until 31 October. The award is open to young people (21-35) in the agricultural industry, who are residents in either Australia or New Zealand, and seek to make a difference. The winner is provided with a customised mentoring

package, tailored to suit the desired areas of interest and growth, guaranteed to take the career path of the successful applicant to new heights.

You've got to be in it, to win it →

Upcoming events

Mareeba Shire wet season outlook	Online , 23 October
Sheep handler and practical eID use demonstration	'Lansdowne' via Tambo , 24 October
Pasture dieback: Outcomes from 7 years of DAF research, development and extension	Online , 24 October 12:30-1:30pm
Nutrition EDGE	Kununurra , 24-26 October Katherine , 1-3 November Charters Towers , 8-10 November
Accessing free data for your grazing property	Online , 25 October, 7-8:30 am Online , 25 October, 12:30-2 pm Online , 26 October, 12:30-2 pm Online , 26 October, 6:30-8 pm
Be finance ready	Dulacca , 25 October Warwick , 1 November
Dinner and Panel: Q&A session of goat experts from producers to processing	Longreach , 27 October
Livestock advisor essentials	Brisbane , 31 October-2 November
Breeding EDGE	Cloncurry , 1-3 November
RCS Grazing clinic	Croydon , 7-9 November
Calf Alive research update	Mount Isa , 8 November
Building grazing business resilience	Eidsvold , 8 November Monto , 9 November
Australasian Pacific Extension Network conference	Launceston , 14-16 November
RCS Grazing for Profit	Townsville , 22-28 November

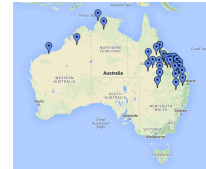
- Productive and persistent legume pastures [Millmerran](#), 24 November
- Carbon EDGE pilot [Alice Springs](#), 28-29 November
- Business EDGE [Brisbane](#), 29-30 November
[Biloela](#), 5-6 December
- Cattle, carbon and sustainability [Gayndah](#), 5 December
[Moura](#), 6 December
[Emerald](#), 7 December

If an event is listed here, it does not imply endorsement of the event nor its content by DAF or FutureBeef. Please read our [full disclaimer](#).

[View calendar](#)

Do you have an event you'd like to promote? Simply send us [an email](#) and we'll add it to our calendar.

Looking for an event near you? Click the map to see events being delivered in the next three months.



Did a friend forward this message to you? [Subscribe yourself](#) and receive your own next time!
[Update subscription preferences](#) | [Unsubscribe from this list](#)



Future

Copyright © 2023 Queensland Department of Agriculture and Fisheries. All rights reserved.

You are receiving this email because you registered to receive it.

Our address is:
Department of Agriculture and Fisheries
41 Boggo Road
Dutton Park QLD 4102
Australia

Add us to your address book



Working together for a profitable and sustainable northern beef industry

The Queensland Government shall not be liable for technical or other errors or omissions contained herein. To the extent permitted by law, the reader/user accepts all risks and responsibility for losses, damages, costs and other consequences

resulting directly or indirectly from using the information contained herein.