



Update

Your latest news from the FutureBeef program

Hi <<First name>>

The Bureau of Meteorology has released its *Climate and water long-range forecast* for November through to January. Unfortunately, the forecast remains unfavourable for much of northern Australia. [Watch the clip on YouTube](#) for more information.

We welcome feedback on the FutureBeef eBulletin via [email](#), call us on 13 25 23 (for the cost of a local call in Queensland), connect with us on [Facebook](#), [X](#) and [LinkedIn](#), or check us out on [YouTube](#). We'd love to hear from you...

Kind regards,

Jodie

on behalf of FutureBeef

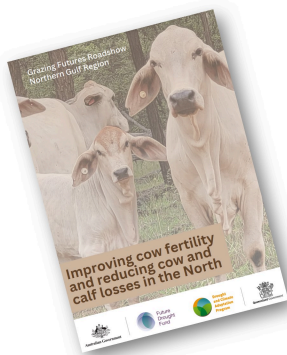
Outcomes and findings of 7 years of pasture dieback research

Pasture dieback has impacted almost a quarter of Queensland, effecting areas with sown pasture that receive upwards of 600 mm annually. In some cases, pasture dieback has wiped out an entire season's worth of pasture growth, leaving it open to be dominated by unfavourable species. Research into the cause, and management strategies to deal with the condition, has been the focus of one DAF team for the last 7 years.



[Click here to watch their summary of findings](#) →

Improving cow fertility and reducing cow and calf losses in the North



Didn't make it to the GrazingFutures North Queensland roadshow in 2021?

Well, you are in luck! Gulf Savannah NRM, in conjunction with the Department of Agriculture and Fisheries, and Dr Geoffry Fordyce, have compiled all of the key messages, into one fantastic booklet:

[Download your copy of *Improving cow fertility and reducing cow and calf losses in the North* \(PDF, 20 MB\)](#) →

Considering drought feeding? Dr Jillian says 'Forward planning is key.'



When it comes to feeding stock during dry times, Dr Jillian Kelly of Animal Health and Nutrition Consulting says, "Play the hand you're dealt, if your pasture isn't meeting your animals' needs, you need to do something about it. Weight loss in livestock is fine for a short period, if it's recognised, controlled and for a production outcome (e.g. in lactating breeders) but eventually if it doesn't rain, you've got to make a decision – either feed them or sell them."

[Read more of Dr Jillian's advice →](#)

KPCA Livestock Handling Cup winners and gridders



The Kimberley Pilbara Cattlemen's Association (KPCA) Livestock Handling Cup was run again recently, testing the low stress stock handling skills of locals in a competition format — pitching neighbour against neighbour — as they were tasked with moving a pen of weaners through a complex obstacle course.

[Here are the 2023 Livestock Handling Cup winners →](#)

Recovering from bushfires



Have you been impacted by recent bushfires? Here's a compilation of resources and tasks to complete that will help you recover and get back on track: Things to do now, things to do when you get time, things to consider as you move forward.

[2023 Queensland bushfire information →](#)

Rain gauge: Forecasting for a profitable future – upcoming courses



With an El Niño driven summer approaching, many people are asking questions, such as: "Do I have the feed to keep these cows for another year?" and, "When will I need to start supplementing?"

The *Rain Gauge: Forecasting for a profitable future* course was developed by the Northern Australian Climate Program and Meat and Livestock Australia as a Profitable Grazing Systems climate-specific training course.

[Find out more about *Rain gauge: Forecasting for a profitable future* →](#)

Culling to reduce costs when you've got no feed left

Whether you're experiencing dry conditions, or have been burnt out during recent bushfires, feeding cattle until plentiful pasture is available, will be costly. Business Queensland has compiled a short article that may assist you to make hard decisions regarding culling strategies to reduce herd numbers during such challenging times.

[Reducing stock after a disaster →](#)

MLA launches manual for covered housing systems in feedlots

To help the Australian lot feeding industry evaluate different shade and shelter options, Meat & Livestock Australia (MLA) has launched the 'MLA Best practice design and management manual for covered and partially covered housing systems'.

[Filled with great advice, download your copy today \(PDF, 9 MB\) →](#)

Upcoming events (times are displayed in AEST)

Farmers helping our own	<u>Roma</u> , 13 November <u>Nindigully</u> , 14 November <u>Goondiwindi</u> , 15 November
Management of cattle tick and tick fever	<u>Online</u> , 14 November, 12pm
Dry season management	<u>Kingaroy</u> , 14 November
Australasian Pacific Extension Network Conference	<u>Launceston</u> , 14-16 November
Preparing for an El Niño driven summer	<u>Webinar</u> , 16 November, 6pm
RCS Grazing for profit	<u>Geraldton</u> , 15-21 November <u>Townsville</u> , 22-28 November
AgForce northern forum and dinner	<u>Longreach</u> , 21 November
Drought preparedness and farm business resilience planning	<u>Boonah</u> , 21 November <u>Mulgowie</u> , 22 November <u>Toogoolawah</u> , 23 November
AgTech and logistics hub and MLA plant health demo day	<u>Wellcamp</u> , 23 November
Productive and persistent legume pastures	<u>Millmerran</u> , 24 November

Carbon EDGE pilot	Alice Springs , 28-29 November
Rain gauge: Forecasting a profitable future	Broome , 29-30 November
Business EDGE	Biloela , 5-6 December
Nutrition EDGE	Longreach , 5-7 December
Cattle, carbon and sustainability	Gayndah , 5 December Moura , 6 December Emerald , 7 December
BredWell FedWell	Jandowae , 6 December
Pasture dieback workshop	Roma , 7 December
DIY Artificial insemination of livestock course	Dayboro , 18-20 December

If an event is listed here, it does not imply endorsement of the event nor its content by DAF or FutureBeef. Please read our [full disclaimer](#).

[View calendar](#)

Do you have an event you'd like to promote? Simply send us [an email](#) and we'll add it to our calendar.

Looking for an event near you? Click the map to see events being delivered in the next three months.



Did a friend forward this message to you? [Subscribe yourself](#) and receive your own next time!
[Update subscription preferences](#) | [Unsubscribe from this list](#)



Future

Copyright © 2023 Queensland Department of Agriculture and Fisheries. All rights reserved.

You are receiving this email because you registered to receive it.

Our address is:
Department of Agriculture and Fisheries
41 Boggo Road
Dutton Park QLD 4102
Australia

Add us to your address book



Working together for a profitable and sustainable northern beef industry

The Queensland Government shall not be liable for technical or other errors or omissions contained herein. To the extent permitted by law, the reader/user accepts all risks and responsibility for losses, damages, costs and other consequences resulting directly or indirectly from using the information contained herein.