



# Update

Your latest news from the FutureBeef program

Hi <<First name>>

Wishing you the very best and a good break over Christmas and the New Year 🌲

Our bumper December issue has project updates from the Northern Territory Livestock Industries team, the WA Southern Rangelands modelling project, a new GRASS program funding opportunity, Method to Market project update, phosphorus supplementation, new reports of pasture dieback and more.

We welcome feedback on the FutureBeef eBulletin via [email](#), call us on 13 25 23 (for the cost of a local call in Queensland), connect with us on [Facebook](#), [X](#) and [LinkedIn](#), or check us out on [YouTube](#). We'd love to hear from you...

Kind regards,

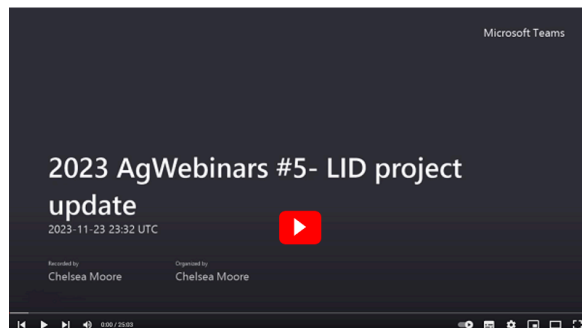
Felicity  
on behalf of FutureBeef

---

## There is increased capacity in the NT extension team, and the trio have their sights set on some new goals!

A very warm welcome to Georgia Anderson who has recently joined the Northern Territory Department of Industry, Tourism and Trade (DITT) Livestock Industries extension team!

[Find out more about the projects the team currently have on the go and their plans for 2024 →](#)



---

## Optimising beef systems in WA's Southern Rangelands: Insights from recent modelling



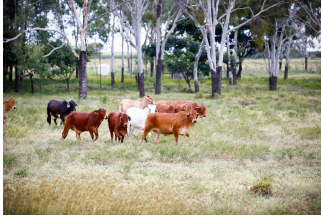
The Southern Rangelands of Western Australia is a crucial hub for beef production, and optimising the beef system is paramount for sustainability and productivity. Recent modelling studies have provided valuable insights into achieving an optimal balance.

This article explores the key findings from the modelling studies, shedding light on recommended practices for beef production in the Southern Rangelands. From grazing management to resource utilisation, discover the science-backed strategies that can enhance the efficiency and viability of beef systems in this ecologically significant region.

[For more information please click here →](#)

---

## Call for graziers: Grazing Resilience and Sustainable Solutions program phase two now open



Phase two of the Queensland Government's [Grazing Resilience and Sustainable Solutions](#) (GRASS) program is now underway. The program will support at least 420 graziers in the Burdekin, Fitzroy and Burnett Mary regions to improve land condition and enhance production, achieving economic benefits and positive environmental outcomes.

[Is this for you? Read more to find out →](#)

---

## Carbon and environmental markets for beef producers: Method to Market project update



The Method to Market project operating in central and south-west Queensland is investigating opportunities for extensive grazing businesses to engage in environmental and carbon markets.

[Read the summary of key findings to date →](#)

---

## Should you supplement with phosphorus?



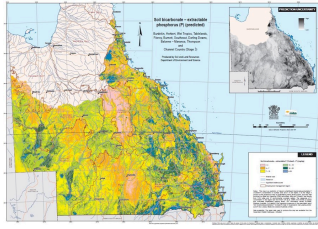
Low phosphorus levels are a major problem for cattle in northern Australia. Supplementation can significantly increase weaning rates, growth rates and sale cattle weights.

[Learn more from Department of Agriculture and Fisheries principal beef extension officer Mick Sullivan →](#)

---

## Updating the Phosphorus Map of Queensland

The Phosphorus (P) Map of Queensland is being updated to include the P status of soils across the Southern Gulf, Northern Gulf and Cape York catchment areas.



Mareeba, Cloncurry and Charters Towers Department of Agriculture and Fisheries staff have been busy collecting soil samples that their Department of Environment and Science colleagues will use to complete the map.

This project is funded by Meat and Livestock Australia and is a partnership with the Department of Environment and Science.

[Read more →](#)

## New reports of pasture dieback in Queensland



Graziers are urged to keep an eye out for pasture dieback, which is continuing to spread to new areas of Queensland.

The Department of Agriculture and Fisheries has produced a [fact sheet](#) to help graziers identify and manage the condition, which causes death of otherwise healthy pastures.

Principal Agronomist Stuart Buck said pasture dieback previously only affected high-yielding sown-grass pastures in regions with more than 600mm of average annual rainfall.

However, it was now spreading into drier western districts of southern, central and northern Queensland.

[Read more →](#)

## Age of steer turnoff: A look at Northern Gulf beef production systems – new fact sheet available



This fact sheet summarises the key findings from the Northern Gulf Beef Production Systems Report.

It includes the impact of different steer turnoff ages on profitability and key factors in determining optimum age of turnoff.

[Download a copy of the \*Age of steer turnoff\* fact sheet →](#)

## Smoothing the rocky road for more calves



Early signs from research into feeding breeders to improve calf survival rates in northern Australia are promising.

In this MLA article, Matt Barrett, manager of Paraway Pastoral Company's 'Rocklands' property, explains the challenges and potential benefits of the Calf Alive project to their operation.

[Read more →](#)

---

## Breaking old habits with strategic drought decisions

Central Queensland beef producer Will Wilson gives a frank insight into drought decision making in this article by Central Queensland University.

[Read more →](#)

## Upcoming events (times are displayed in AEST)

Understanding the Australian Feedbase Monitor (AFM) for land management [Online](#), 12 December 9am

Understanding the Australian Feedbase Monitor (AFM) for land management [Online](#), 12 December 5pm

Assessing and managing business risk [Online](#), 13 December

Dry times planning and information session [Warwick](#), 14 December

DIY Artificial insemination of livestock course [Dayboro](#), 18–20 December

Human agronomy in agricultural businesses [Online](#), 10 January

If an event is listed here, it does not imply endorsement of the event nor its content by DAF or FutureBeef. Please read our [full disclaimer](#).

[View calendar](#)

Do you have an event you'd like to promote? Simply send us [an email](#) and we'll add it to our calendar.

Looking for an event near you? Click the map to see events being delivered in the next three months.



Did a friend forward this message to you? [Subscribe yourself](#) and receive your own next time!  
[Update subscription preferences](#) | [Unsubscribe from this list](#)



## Future

Copyright © 2023 Queensland Department of Agriculture and Fisheries. All rights reserved.

You are receiving this email because you registered to receive it.

Our address is:  
Department of Agriculture and Fisheries  
41 Boggo Road  
Dutton Park QLD 4102  
Australia

Add us to your address book



Working together for a profitable and sustainable northern beef industry

The Queensland Government shall not be liable for technical or other errors or omissions contained herein. To the extent permitted by law, the reader/user accepts all risks and responsibility for losses, damages, costs and other consequences resulting directly or indirectly from using the information contained herein.