



# Update

Your latest news from the FutureBeef program

Hi <<First name>>

In this issue we get a glimpse into biocrusts and the vital role they play in our rangeland ecosystems. There is an update from the Old Man Plains Research Station *Quality Graze* trial shedding light on safe utilisation rates and carrying capacity. The Western Australian Rubber Vine Action Committee outlines their success in the war against rubber vine. Tim Schatz, Department of Industry, Tourism and Trade NT, explains how to avoid vaccination lumps.

You can tune in to a podcast about all things water monitoring, sign up to get the latest Queensland pasture information, get some tips on resetting your mind and last but not least, share your knowledge with the University of Queensland in their online survey about the reproductive performance of northern cattle herds. March is bursting with a range of activities, so check out dates and details in 'Upcoming events'.

As always, we welcome your feedback on the FutureBeef eBulletin via [email](#), call us on 13 25 23 (for the cost of a local call in Queensland), connect with us on [Facebook](#), [X](#) and [LinkedIn](#), or check us out on [YouTube](#). We'd love to hear from you!

Kind regards,

Felicity  
on behalf of FutureBeef

---

## Biocrusts – 'The living skin of rangeland soils'

Biological soil crusts, commonly known as 'biocrusts', are found on the soil surface in arid, semi-arid and tropical seasonally arid ecosystems.

They are a sign of a healthy rangeland ecosystem—stabilising the soil surface, and fixing carbon and nitrogen from the air to name a few of their superpowers.

Biocrust health and functionality are being measured as part of the Rain Ready Rangelands project, funded by the Future Drought Fund.



[Read more about these fascinating microorganisms →](#)

---

## Watching water podcast



This new Leading Sheep podcast, talks all things remote water monitoring—from old to new technology. Andrew Barton from Longreach runs his own water monitoring start up and discusses what options are currently out there.

[Listen to the Watching water podcast →](#)

---

## Does it matter how much grass your cattle eat?



Have you wondered how much of your annual pasture growth can be grazed without causing a decline in land condition? Long-term data from the Quality Graze trial on Old Man Plains Research Station near Alice Springs is being used to update recommended safe utilisation rates for local conditions and pastures.

[Read more →](#)

---

## Successful strides in rubber vine eradication: lessons from the East Kimberley region



Rubber vine is a declared pest in Western Australia, the Northern Territory and Queensland, that can jeopardise pastoral production, agriculture, and biodiversity. The East Kimberley region has been particularly vulnerable to this threat.

A collaborative eradication initiative spearheaded by the Department of Primary Industries and Regional Development, the Department of Biodiversity Conservation and Attractions, and the Kimberley Rangelands Biosecurity Association—under the newly amalgamated “Western Australia Rubber Vine Action Committee”—has shown promising results.

[Read more about how they're winning the war against rubber vine →](#)

---

## Avoiding vaccination lumps



In this article Tim Schatz, Department of Industry, Tourism and Trade NT, explains how to avoid vaccination lumps. Currently there is very strict screening of cattle going for live export and any animals with skin lesions or lumps are being rejected.

[Find out more about how to avoid vaccination lumps →](#)

---

## Registrations for the ICMJ Northern Conference are closing soon!

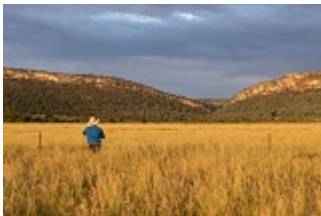


The ICMJ Northern Conference is on the 3–6 April in Rockhampton. It is open to early-career professionals and university students. As well as training workshops, presentations, the ever-popular carcass breakdown and meat judging competition, the conference includes an Industry and Careers Expo. Registrations are open until 15 March, 2024 or until sold out.

[For information and to register click here →](#)

---

## Sign up to hear the latest pasture news



The Department of Agriculture and Fisheries' pasture team is launching an e-newsletter to bring you the latest on grass, legumes and grazing management in Queensland.

[Read more about and sign up to the new Queensland Pasture Resilience Program newsletter →](#)

---

## Online survey—Optimizing reproductive performance in northern Australia beef cattle: A study of management practices



The University of Queensland wants to hear about how you manage the reproductive performance of your herd in this brief online survey. Each participant in the survey will enter a random draw for one of ten \$50 Coles gift cards.

[Click here to complete the survey →](#)

---

## Online survey—Carbon farming: role and implications for broadacre agriculture

In this brief online survey, the Federation University Australia would like to hear your views on carbon farming.

[Click here to complete the survey →](#)

**Upcoming events (times are displayed in AEST)**

BeefUp Forum	<a href="#">Fitzroy Crossing</a> , 7 March
Farm Business Resilience Workshop	<a href="#">Stanthorpe</a> , 7 March <a href="#">Goomeri</a> , 12 March
Succession Planning Workshop	<a href="#">Springsure</a> , 7 March
Grazing Business Resilience Workshop	<a href="#">Springsure</a> , 11 March <a href="#">Blackwater</a> , 12 March <a href="#">Middlemount</a> , 13 March
Beef Export Pricing Forum	<a href="#">Brisbane</a> , 11 March
MLA Cattle Projections webinar	<a href="#">Online</a> , 12 March
Making eID work for you	<a href="#">Dirranbandi</a> , 12 March <a href="#">Cunnamulla</a> , 13 March
Western QLD Grazing: Studies & Solutions for the Future	<a href="#">Longreach</a> , 13 March
Suncorp Agribusiness Summit: Field Day	<a href="#">Billa Billa</a> , 13 March
More Weight Out the Gate	<a href="#">Capella</a> , 13 March <a href="#">Alpha</a> , 20 March <a href="#">Rolleston</a> , 20 March
The Season's Essentials Seminar – Your Guide to Managing 2024's Financial Risks and Seasonal Forecast	<a href="#">Stanthorpe and online</a> , 13 March
Digital consignments and eNVD for producers	<a href="#">Online</a> , 12 March <a href="#">Online</a> , 18 March
Resilience in Agriculture Workshop for Primary Producers	<a href="#">Dalby</a> , 14 March
Suncorp Agribusiness Summit: Conference	<a href="#">Goondiwindi</a> , 14 March
Digital consignments and eNVD for processors	<a href="#">Online</a> , 14 March
Digital consignments and eNVD for agents/saleyards	<a href="#">Online</a> , 15 March
Farmer First Aid Training	<a href="#">Blackall</a> , 15 March

FNQ Fire Forum	<a href="#">Mareeba</a> , 16–17 March
Business EDGE	<a href="#">Mt Isa</a> , 18–19 March
Carbon EDGE pilot	<a href="#">Alice Springs</a> , 18–19 March
“Influential Women” Community Leadership Forum	<a href="#">Ayr</a> , 19–21 March
Pasture Legume Field Day	<a href="#">Richmond</a> , 19 March
Meat Business Women Australia Conference   The Power of You	<a href="#">Melbourne</a> , 20 March
Business EDGE Young Guns	<a href="#">Dalby</a> , 21–22 March
Digital consignments and eNVD for transporters	<a href="#">Online</a> , 25 March
Breeding EDGE	<a href="#">Springsure</a> , 25–27 March
QFF Farming with Floods	<a href="#">Boonah</a> , 26 March
Nutrition EDGE	<a href="#">Katherine</a> , 27–29 March <a href="#">Broome</a> , 3–5 April
ICMJ Northern Conference	<a href="#">Rockhampton</a> , 3–6 April
Beef Australia	<a href="#">Rockhampton</a> , 5–11 May
Brian Pastures Field Day	<a href="#">Gayndah</a> , 29 May
FarmFest	<a href="#">Toowoomba</a> , 4–6 June
AgGrow	<a href="#">Emerald</a> , 20–22 June
Joint AAAS & AAAP Animal Production Congress	<a href="#">Melbourne</a> , 8–12 July

If an event is listed here, it does not imply endorsement of the event nor its content by DAF or FutureBeef. Please read our [full disclaimer](#).

[View calendar](#)

Do you have an event you'd like to promote? Simply send us [an email](#) and we'll add it to our calendar.

Looking for an event near you? Click the map to see events being delivered in the next three months.



Did a friend forward this message to you? [Subscribe yourself](#) and receive your own next time!  
[Update subscription preferences](#) | [Unsubscribe from this list](#)



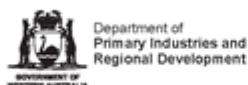
Future

Copyright © 2024 Queensland Department of Agriculture and Fisheries. All rights reserved.

You are receiving this email because you registered to receive it.

Our address is:  
Department of Agriculture and Fisheries  
41 Boggo Road  
Dutton Park QLD 4102  
Australia

Add us to your address book



Working together for a profitable and sustainable northern beef industry

The Queensland Government shall not be liable for technical or other errors or omissions contained herein. To the extent permitted by law, the reader/user accepts all risks and responsibility for losses, damages, costs and other consequences resulting directly or indirectly from using the information contained herein.