



Update

Your latest news from the FutureBeef program

Hi <<First name>>

Sit back and grab a cuppa – in this issue we have two great producer case studies from the Northern Territory, the next instalment of *Turning leaf into beef*—troubleshooting common challenges on irrigated pastures, how drones can be used for more than ‘just’ mustering, plus much more.

The Kidman Springs BeefUp forum and BredWell FedWell workshop are on 19–21 August – don’t forget to register! Links to the forum and workshop programs and registration are in the article below.

Livestock Production Assurance (LPA) is getting an update with changes to start from 1 September – see below for more information.

Kind regards

Felicity
on behalf of the FutureBeef team

P.S. Let us know what you think of the FutureBeef eBulletin via [email](#) or call us on 13 25 23 (for the cost of a local call in Queensland). You can also connect with us on [Facebook](#), [X](#) and [LinkedIn](#), or check us out on [YouTube](#). We'd love to hear from you!

Breeding for poll in AACo: modelling to implementation

In this BeefConnect webinar recording, AACo’s Dr Matthew Kelly (Principal Scientist) and Dr James Copley (Quantitative Geneticist) discuss breeding for poll in practice and its challenges. Plus, how to use the ‘digital twin’ to drive better decision-making.



[Watch the webinar recording →](#)

Kidman Springs BeefUp Forum and BredWell FedWell Workshop



Join Meat & Livestock Australia and the Northern Territory Department of Industry, Tourism and Trade for the 2024 Kidman Springs BeefUp forum to hear about the latest in local and world-leading research and technologies for the northern beef industry. The BredWell FedWell workshop the day before will cover breeding and feeding cattle to maximise profit.

[Check out the program and register today →](#)

Turning leaf into beef – Part 3: Troubleshooting



Tune in for Part 3 of the Northern Beef Project's 'Turning leaf into beef' video series. In 'Troubleshooting' Dr Kevin Bell provides valuable insights into troubleshooting common challenges encountered when producing beef on irrigated pastures in northern Australia. Dr Bell is a distinguished former Department of Primary Industries and Regional Development staff member and former Innovation Manager at Pardoo Wagyu.

[Read more and watch the video →](#)

Sky high approach to animal welfare



A recent study by the Western Australia Department of Primary Industries and Regional Development has identified the use of remote piloted aircraft (drones) as an effective tool to monitor the health and welfare of livestock from a distance.

[Read more →](#)

Veterinary reserve on standby for animal disease emergency



The WA Emergency Animal Disease Veterinary Reserve is intended to support the Department of Primary Industries and Regional Development's veterinary workforce by building skills and understanding of an emergency response. The first intake of 22 non-government vets is currently being mentored by the Department's animal biosecurity and welfare team.

[Read more →](#)

Rain ready rangelands – Mitchell grass recovery case study



The Mitchell Grass Recovery Project is looking at ways that grazing strategies, in particular wet season spelling can be used to help minimise the impact of seasonal variability and improve land condition. In this case study, Brumby Vaughan, Manager of Anthony Lagoon Station in the Northern Territory's Barkly Tablelands shares her experience of implementing wet season spelling.

[Download the case study →](#)

Lakefield's weaner success floats on targeted management



Since purchasing 'Lakefield Station' on the Sturt Plateau, NT, in 1999, the Riggs family have developed it into a thriving cattle operation. In this case study, they share their weaner management strategies. This case study was developed as part of the Meat & Livestock Australia funded 'Weaner management in northern beef herds' project.

[Download the case study →](#)

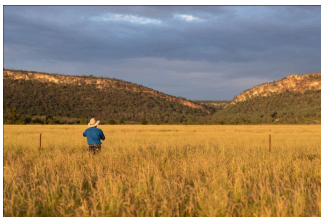
Long-term grazing research showcased on Landline



Landline recently aired a story about the Wambiana Grazing Trial near Charters Towers in North Queensland. Department of Agriculture and Fisheries researchers have been conducting the trial since 1997, developing sustainable and profitable strategies to manage for rainfall variability in extensive grazing lands. This research is continuing through the Queensland Pasture Resilience Program.

[Watch the story on ABC iView \(tune into the 30 June episode from 18:11\) →](#)

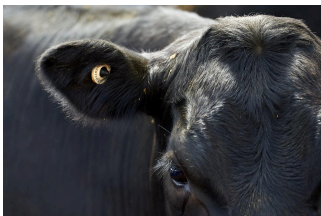
Get the latest news on Queensland pastures



Keep up to date with all things grass, legumes and grazing management with the quarterly Queensland Pasture Resilience Program newsletter. Sign up to receive event invitations, research updates, new tools, resources and articles from the Department of Agriculture and Fisheries' pastures team.

[Read previous issues and sign up here →](#)

Livestock Production Assurance (LPA) is changing – what you need to know



To ensure the Livestock Production Assurance (LPA) program continues to keep pace with global demands for food safety, animal welfare and traceability, the red meat industry has endorsed some changes to the LPA program rules that will take effect from 1 September 2024.

[Download the LPA changes fact sheet →](#)

[Watch the LPA video →](#)

Drone mustering takes off



In the two years since SkyKelpie was founded, drone mustering has reached new heights. The benefits of drone use on-farm continue to be unlocked, far beyond mustering. Near Mitchell, Queensland, beef producer Joe Allen has been using a drone to help with the workload since the early days of SkyKelpie.

Empower the Next Generation with AgCAREERSTART!



Calling all beef producers! Are you ready to nurture the next generation of agricultural professionals? AgCAREERSTART is here to connect you with motivated 17–25 year-olds eager to dive into full-time roles in primary production.

Why host with AgCAREERSTART? Because it has proven success with 180 placements and high retention rates, \$4500 Training and Engagement Bursary for participants and \$2000 grant for host farmers.

Can you provide a full-time role for 10–12 months in 2025, mentor and teach, and create a safe, inclusive environment?

[Apply now →](#)

Learning the Lessons podcast



Central Australian pastoralists share insights in podcasts. A three-part podcast series by the NT Cattlemen's Association called 'Learning the Lessons' showcases the experiences and strategies of pastoralists and discusses what it takes to manage beef enterprises effectively in a variable climate (from the *Agriculture and Biosecurity eNews*). The project was funded by the NT/WA Drought Hub.

[Listen to Podcast 1 with Andy & Steve Hayes →](#)

[Listen to Podcast 2 with Willy Brown →](#)

[Listen to Podcast 3 with Rebecca Cadzow →](#)

Feral pig research and control



This Leading Sheep *Around the Camp* article summarises a recent study by Cameron Wilson and Matthew Gentle (Department of Agriculture and Fisheries, Queensland) and Darren Marshall (Southern Queensland Landscapes) into factors influencing the activity ranges of feral pigs.

[Read the *Around the Camp* article →](#)

Effects of ivermectin on soil nutrient cycling, plant biomass and dung beetles



This study examined the impact of ivermectin on dung beetle abundance and subsequent soil nutrient concentrations and plant growth during spring and summer in South Dakota (USA) grassland. In summary, beetle abundance was 50% greater in dung pats without ivermectin. Ivermectin concentrations did not change nitrogen content in dung or plants, or plant biomass (from the *Leading Sheep Around the Camp* newsletter).

[Get the full story in The Rangeland Journal →](#)

Survey: What motivates northern Australian beef producers to use genetic improvement tools in their herds?

This CQUniversity research project aims to increase the understanding of the factors that motivate northern Australian beef producers to use genetic improvement tools in their herds. The survey is anonymous, confidential and takes approximately 15 minutes to complete. More information about the survey is available in the [Participant information sheet](#).

[Complete the online survey →](#)

[Register your interest in completing a phone survey →](#)

Upcoming events (times are displayed in AEST)

Breeding EDGE	<u>Longreach</u> , 12–14 August <u>Charters Towers</u> , 2–4 September
GrazingforProfit	<u>Roma</u> , 14–20 August
Remote first aid training	<u>Normanton</u> , 16 August <u>Croydon</u> , 17 August <u>Georgetown</u> , 18 August
BeefUp forum & BredWell FedWell workshop	<u>Kidman Springs Research Station</u> , 19–21 August
Livestock carbon footprint workshop	<u>Clermont</u> , 21 August <u>Moura</u> , 23 August <u>Bedourie</u> , 27 August <u>Augathella</u> , 3 September
Grazing land management (GLM) EDGE	<u>Rockhampton</u> , 21–23 August
23 rd Australasian Weeds Conference	<u>Brisbane</u> , 25–29 August

Farm Business Resilience Program workshop	Kenilworth , 27 August Kingaroy , 29 August
TASC Carbon Farming workshop	Mundubbera , 29 August
Scenic Rim Agricultural Expo	Harrisville , 30–31 August
Weed management workshop	Charleville , 4 September
Containment feeding considerations workshop	Roma , 4 September
Farmers Event on World Suicide Prevention Day	Goondiwindi , 10 September
Farm Business Resilience Program climate workshop	Bell , 13 September

If an event is listed here, it does not imply endorsement of the event nor its content by DAF or FutureBeef. Please read our [full disclaimer](#).

[View calendar](#)

Do you have an event you'd like to promote? Simply send us [an email](#) and we'll add it to our calendar.

Looking for an event near you? Click the map to see events being delivered in the next three months.



Did a friend forward this message to you? [Subscribe yourself](#) and receive your own next time!
[Update subscription preferences](#) | [Unsubscribe from this list](#)



Future

Copyright © 2024 Queensland Department of Agriculture and Fisheries. All rights reserved.

You are receiving this email because you registered to receive it.

Our address is:
Department of Agriculture and Fisheries
41 Boggo Road
Dutton Park QLD 4102
Australia

Add us to your address book



Working together for a profitable and sustainable northern beef industry

The Queensland Government shall not be liable for technical or other errors or omissions contained herein. To the extent permitted by law, the reader/user accepts all risks and responsibility for losses, damages, costs and other consequences resulting directly or indirectly from using the information contained herein.