

This issue is a mixed bag of articles ranging from Spring opportunities for pasture dieback affected pastures, soil testing, the seasonal bushfire outlook and getting ready for the flood, fire, cyclone time of year.

A highlight is the recording of Dr Michael McGowan's BeefConnect webinar on *Managing infectious causes of reproductive loss in beef herds*. Michael gives a brilliant, practical overview and update on vibrio, trich, pestivirus and leptos management and control - click on the link below to watch.

October is National Safe Work Month so check out what's on and the resources available through [Safe Work Australia](#) and your respective state and territory safe work organisations.

It is also time to celebrate, even more than usual, our amazing rural women with the International Day of Rural Women on 15 October!

As always if there are any topics that you'd like covered or people you'd like to hear from please let us know.

Kind regards

Felicity
on behalf of the FutureBeef team

P.S. Let us know what you think of the FutureBeef eBulletin via [email](#) or call us on 13 25 23 (for the cost of a local call in Queensland). You can also connect with us on [Facebook](#), [X](#) and [LinkedIn](#), or check us out on [YouTube](#). We'd love to hear from you!

Managing infectious causes of reproductive loss in beef herds

In this webinar recording, Dr Michael McGowan takes us on a rollicking, myth busting ride across the latest in vibrio, trich, pestivirus and leptos. Outbreaks of infection with any of these can cause big losses, however more commonly the losses are less obvious.

[Watch the video →](#)



Indigenous Grazing for Profit: Pathway into the pastoral industry



In northern Western Australia, the Aboriginal Pastoral Academy (APA) is helping young Aboriginal adults discover a bright future in the pastoral industry. Earlier this year, the APA hosted the RCS Indigenous Grazing for Profit course. The workshop covered essential topics like people management, business operations, land stewardship and livestock care.

[Read more →](#)

Kidman Springs BeefUp forum highlights



Kidman Springs (also known as Victoria River Research Station) hosted a jam-packed two-day BeefUp forum on 20–21 August. Participants got insights into markets and export, the 'Sweet Spot' for pasture utilisation and breeder performance, the Select Brahman herd, legume establishment and more!

[Get the full low down here →](#)

The future is female – Happy International Rural Women's Day!



The Livestock Industries team based at Katherine Research Station in the Northern Territory is breaking down gender stereotypes with an all-female team.

[Read how they are doing it →](#)

Breeding EDGE workshop leads to new thinking at Trinidad Station



In this Meat & Livestock Australia article, Wendy Sheehan shares her insights into running Trinidad Station at Quilpie. After attending a Breeding EDGE workshop Wendy came home with some changes she wanted to make.

[Find out why and what these changes were →](#)

5 reasons to attend MLA Updates



MLA Updates are for you to: hear from industry leaders; see genetic gains and digital agriculture in action; gain insights from key markets; find out how MLA is capturing value from the whole carcass, and; catch up and connect with MLA staff, friends and colleagues. The next update is on Thursday 10 October 2024 at the Claremont Showgrounds, Perth WA.

[Read more and register →](#)

Spring opportunities for pasture dieback affected pastures



If you have large areas of grass that have died due to pasture dieback through winter, then there are opportunities for pasture development in spring. Some grass species recover and re-establish very well from the soil seed bank. Areas of dead grass plants act like stubble of a grain crop during fallow – any early season rainfall is captured and retained until planting.

[Read more in this Queensland Pasture Resilience Program article →](#)

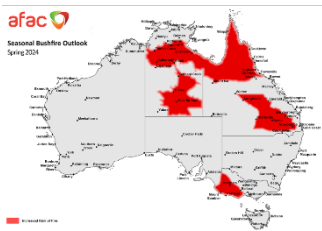
Soil testing for pastures



Soil nutrient supply is a critical factor that influences pasture productivity. Therefore, soil testing is a useful tool to help understand what can be done to improve the growth and quality of pastures. This Queensland Pasture Resilience Program article summarises the key points when planning a soil test and collecting samples.

[Read more →](#)

Seasonal bushfire outlook Spring 2024



The National Council for fire and emergency services, AFAC, Seasonal Bushfire Outlook for Spring 2024 shows increased risk of fire for large areas in the Northern Territory and Queensland.

[Check the bushfire outlook for your area →](#)

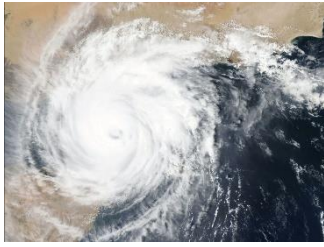
Rural Landholder Recovery Grants for small-scale primary production enterprises in Queensland



Grants of up to \$10,000 are available to help eligible rural landholders directly impacted by Tropical Cyclone Jasper and the Northern and Southern Queensland bushfires with the costs of clean-up and restoration of their small-scale primary production enterprise. Applications for the Rural Landholder Recovery Grant are open until 31 March 2025.

[Find out more →](#)

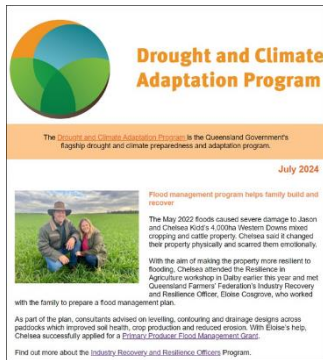
Get ready for disaster season



The Bureau of Meteorology is highlighting the potential for a La Niña later this year, which could increase the risk of heavy rain, floods, tropical cyclones, and bushfires in some areas. Primary producers are urged to prepare now to protect their farms, crops, and livestock.

[Read more about disaster preparation tips →](#)

Want to know more about drought and climate resilience?



The Drought and Climate Adaptation Program (DCAP) newsletter contains helpful information to assist producers to better manage and adapt to future drought and climate risks. DCAP is the Queensland Government's flagship drought and climate preparedness and adaptation program which delivers improved forecast products, decision support tools, and extension activities.

[If you want to know more about this program, subscribe to the DCAP News now →](#)

Research, Development and Adoption (RD&A) Stocktake 2021–2023



The RD&A stocktake summarises Meat & Livestock Australia-funded projects that were completed and in-progress during June 2021 to July 2023.

[Download a copy and view previous issues →](#)

2025 AgriFutures Rural Women's Award — applications due 9 October

The AgriFutures Rural Women's Award acknowledges women who have developed and implemented projects or businesses that have a positive impact on their rural community. Applications for the 2025 AgriFutures Rural Women's Award are open now until 9 October 2024.

[Find out what's involved and apply now →](#)

Upcoming events (times are displayed in AEST)

BredWell FedWell

[Clifton](#), 8 October

Regional Queensland Brain Reset Tour

[Emerald](#), 8 October

[Longreach](#), 11 October

[Winton](#), 14 October

[Mt Isa](#), 16 October
[Cloncurry](#), 17 October
[Richmond](#), 21 October
[Hughenden](#), 28 October
[Charters Towers](#), 4 November
[Georgetown](#), 6 November
[Townsville](#), 8 November

2025 AgriFutures Rural Women's Award applications close

[Online](#), 9 October

Mineral supplementation for beef and sheep: What are the options for mineral supplements and how to best assess cost-effectiveness?

[Online](#), 9 October

MLA Updates

[Perth](#), 10 October

International Day of Rural Women

[Worldwide](#), 15 October

Talkin' tools for your beef business

[Gayndah](#), 15 October
[Nanango](#), 16 October

Pasture dieback information day

[Mitchell](#), 15 October
[Augathella](#), 16 October
[Blackall](#), 17 October
[Condamine](#), 20 November

Getting started with BREEDPLAN

[Online](#), 15 October
[Online](#), 16 October
[Online](#), 21 October
[Online](#), 12 November
[Online](#), 14 November

Grazing fundamentals EDGE

[Alpha](#), 15 October
[Longreach](#), 17 October
[Kununurra](#), 21 October
[Halls Creek](#), 23 October
[Derby](#), 25 October

Property management: Understanding financial systems

[Cloncurry](#), 22 October

Embracing agriculture digital innovation workshop

[Emerald](#), 22–23 October
[Longreach](#), 29–30 October

	Caboolture , 6–7 November Boonah , 12–13 November Toowoomba , 14–15 November Bowen , 26–27 November
Pasture establishment workshop and paddock walk	Monto , 23 October
Herefords Australia Future leaders and breeders forum	Brisbane , 23–24 October
Spyglass Field Day – Research Update	Spyglass Beef Research Facility , 24 October
WQ Beef Research Committee update	Windorah , 24 October
Livestock, carbon and sustainability	Cunnamulla , 29 October Charleville , 30 October Quilpie , 31 October
First aid and CPR training	Charleville - 1st session , 1 November Charleville - 2nd session , 2 November
Cattle, carbon and sustainability	Bowen , 5 November Charters Towers , 6 November
Nutrition EDGE	Katherine , 6–8 November
Decision making under pressure	Online , 7 November
Leading multi agency teams in deep uncertainty masterclass	Online , 12–13 November
Grazing land management EDGE	Mackay , 12–14 November
<i>What's your plan?</i> workshop	Thargomindah , 13 November Wyandra , 14 November
National Agriculture Day	Australia wide , 15 November
Business EDGE Young Guns	Mackay , 18–19 November

Productive and persistent legume pastures workshop

[Miles](#), 20 November

GrazingforProfit

[Townsville](#), 20–26 November

Business EDGE

[Rockhampton](#), 21–22 November

Breeding EDGE

[Katherine](#), 4–6 December

If an event is listed here, it does not imply endorsement of the event nor its content by DAF or FutureBeef. Please read our [full disclaimer](#).

[View calendar](#)

Do you have an event you'd like to promote? Simply send us [an email](#) and we'll add it to our calendar.

Looking for an event near you? Click the map to see events being delivered in the next three months.



Did a friend forward this message to you? [Subscribe yourself](#) and receive your own next time!
[Update subscription preferences](#) | [Unsubscribe from this list](#)



Copyright © 2024 Queensland Department of Agriculture and Fisheries. All rights reserved.

You are receiving this email because you registered to receive it.

Our address is:

Department of Agriculture and Fisheries

41 Boggo Road

Dutton Park QLD 4102

Australia

[Add us to your address book](#)



Working together for a profitable and sustainable northern beef industry

The Queensland Government shall not be liable for technical or other errors or omissions contained herein. To the extent permitted by law, the reader/user accepts all risks and responsibility for losses, damages, costs and other consequences resulting directly or indirectly from using the information contained herein.