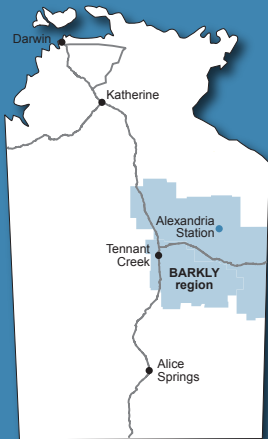
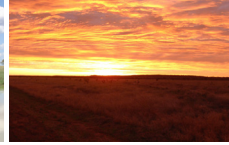




Northern Territory Government



Case Study: Alexandria, Gallipoli & Soudan Stations



Optimising sustainable cattle production and profitability in the Barkly

Together with Gallipoli and Soudan outstations, Alexandria is primarily a breeder operation producing weaners for the North Australian Pastoral Company's (NAPCO) properties in Queensland. Alexandria also has a stud that produces composite bulls for other NAPCO properties.

Ross Peatling has been the manager of Alexandria since 1991. The DPIF is working with Ross to document how genetics, husbandry practices, property development and stocking rate management can optimise live weight gain, breeder performance and livestock emissions in the Barkly district.

- *Barkly District*
- *>16,000km²*
- *Sustainable productivity and profitability*
- *Increased carrying capacity and turn-off*
- *Higher carcass weights*
- *Lower turn-off age*



Australian Government



Queensland Government



“The stabilised Alexandria Composite is a mixture of five breeds:
 5/16 Shorthorn,
 3/8 Brahman,
 1/8 Africander,
 1/8 Charolais, and
 1/16 Hereford”

Retrospective business analysis

The DPIF and Queensland DAFF are investigating how various cattle and land management practices perform in terms of their benefit to beef businesses and whether any of them also have potential for income via carbon farming.

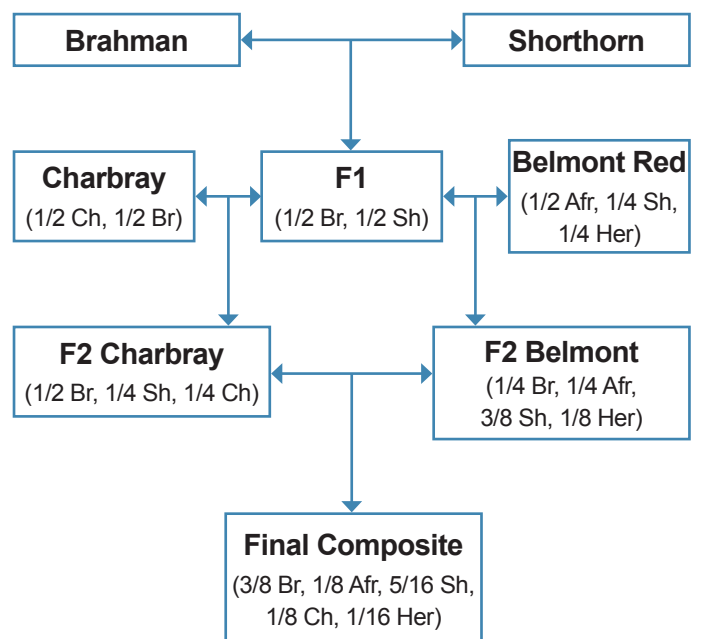
DPIF is working with Alexandria station on the Barkly because they have made significant changes to their enterprise over time. We are documenting these changes to determine what impact they have had on productivity and profitability. This will provide insights to other producers considering changes to their businesses.

Stud cow and calf at Alexandria.

Photo: Tim Schatz



ALEXANDRIA COMPOSITE





Changes at Alexandria

NAPCO ran a Shorthorn herd at Alexandria for over 100 years until the early 1980s. In 1982 they recognised that *Bos indicus* cattle were potentially better adapted to the environmental conditions found on the Barkly and they introduced Brahman bulls. This produced a cross-bred animal with better heat tolerance and resistance to ticks, faster growth rates, leaner meat, higher weaning rates and lower calf losses.

From the mid-1980s the company embarked on a composite breeding program to further improve fertility, temperament and carcass traits. They introduced Belmont Red and Charbray genetics and produced the highly productive, well-adapted composite seen today. Composite bulls are produced for other NAPCO properties from the stud based at Alexandria.

A large property development program has been rolled out on Alexandria over the past 20 years which has resulted in a significant increase in carrying capacity.

NAPCO is highly regarded for its sustainable stocking rate management.

Photo: Jodie Ward





“We’ve maintained the same high branding rates for the past 20 years. The productivity difference now is that we have more cattle, and more kilograms being turned off per breeder”

Ross Peatling

Project Partners

The Climate Clever Beef project is supported by funding from DPIF and the Australian Government until May 2015.

Photo: Casey Collier

Drivers of improved productivity and profitability at Alexandria

Changes in genetics, animal selection, property development and management practices since the 1980’s have led to many benefits:

- Increased carrying capacity through water development
- Consistently high branding rates
- Low mortality rates
- A high proportion of heifers calving at two years of age
- 12-month reduction in age of turn-off
- 20-25% increase in carcass weights
- Marketing higher value 2-tooth Jap Ox
- Good land condition

For more information

Contact the Pastoral Production team at Tennant Creek on 8962 4493 or Berrimah Farm on 8999 2011.

Banner photos courtesy of Department of Primary Industry and Fisheries

